

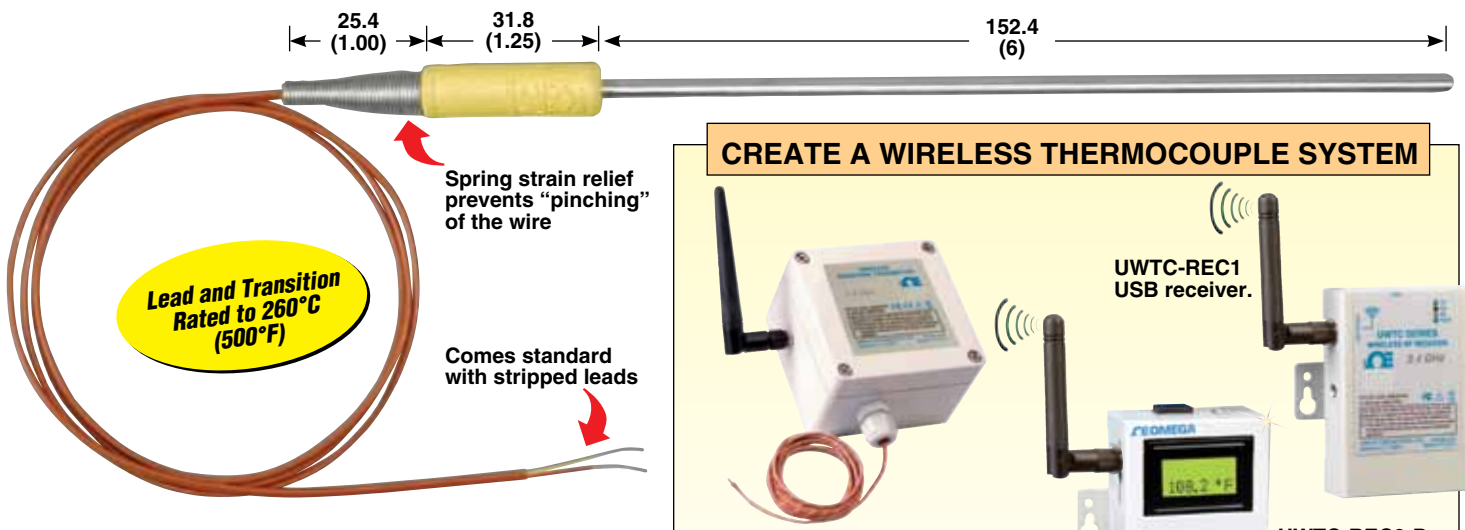
Molded Transition Joint Probes

PFA Insulated Lead Wire

Stripped Lead Termination



Dimensions: mm (in)



KTSS-18U-6 shown smaller than actual size.

Thermocouple Probes with USB Interface Available

CREATE A WIRELESS THERMOCOUPLE SYSTEM

UWTC-2-NEMA thermocouple transmitter.

UWTC-REC1 USB receiver.

UWTC-REC2-D USB receiver with analog output and display.

All models shown smaller than actual size.

Connect a thermocouple to OMEGA's UWTC-NEMA wireless transmitter and the UWTC-REC1 receiver to create a smart wireless system. Visit us online for our complete line of wireless products.

To Order

12" Probes Available for the Same Price!

Calibration ANSI Code	Sheath Material	Sheath Dia. mm (in)	Upper Temp Guidelines °C (°F) T/C Junction	Model No. *Specify Junction (G)rounded, (E)xposed, or (U)ngrounded. **Probe Length 150 mm (6"), 300 mm (12"), 450 mm (18") in Stock
K CHROMEGA®-ALOMEGA®	304 SS	1.59 (1/16)	899 (1650)	KTSS-116(*)-(**)
	304 SS	3.18 (1/8)	899 (1650)	KTSS-18(*)-(**)
	304 SS	4.78 (3/16)	899 (1650)	KTSS-316(*)-(**)
	304 SS	6.35 (1/4)	899 (1650)	KTSS-14(*)-(**)
	INC 600	1.59 (1/16)	921 (1690)	KTIN-116(*)-(**)
	INC 600	3.18 (1/8)	1071 (1960)	KTIN-18(*)-(**)
	INC 600	4.78 (3/16)	1149 (2100)	KTIN-316(*)-(**)
	INC 600	6.35 (1/4)	1149 (2100)	KTIN-14(*)-(**)
	XL	1.59 (1/16)	1038 (1900)	KTXL-116(*)-(**)
	XL	3.18 (1/8)	1149 (2100)	KTXL-18(*)-(**)
	XL	4.78 (3/16)	1204 (2200)	KTXL-316(*)-(**)
	XL	6.35 (1/4)	1204 (2200)	KTXL-14(*)-(**)
J IRON-CONSTANTAN	304 SS	1.59 (1/16)	441 (825)	JTSS-116(*)-(**)
	304 SS	3.18 (1/8)	521 (970)	JTSS-18(*)-(**)
	304 SS	4.78 (3/16)	621 (1150)	JTSS-316(*)-(**)
	304 SS	6.35 (1/4)	721 (1330)	JTSS-14(*)-(**)
T COPPER-CONSTANTAN	304 SS	1.59 (1/16)	260 (500)	TTSS-116(*)-(**)
	304 SS	3.18 (1/8)	316 (600)	TTSS-18(*)-(**)
	304 SS	4.78 (3/16)	371 (700)	TTSS-316(*)-(**)
	304 SS	6.35 (1/4)	371 (700)	TTSS-14(*)-(**)

Ordering Example: KTSS-18U-12, molded transition joint probe, 1000 mm (40") PFA lead wire, Type K, 304 SS sheath, 3.18 mm (1/8") Dia. probe, ungrounded hot-end thermocouple junction, 300 mm (12") sheath length, stripped-leads cold-end termination.

X-ON Electronics

Largest Supplier of Electrical and Electronic Components

Click to view similar products for [Omega manufacturer](#):

Other Similar products are found below :

[DPG409-100DWU](#) [OM-DAQXL-1-NA](#) [CASS-116U-12](#) [DH-1-20-J-12](#) [GG-J-24-SLE-1000](#) [HPC-AU-P](#) [HPC-IR-P](#) [JMQSS-062U-6](#) [KHSS-18G-RSC-12](#) [KHXL-18G-RSC-12](#) [KMQIN-125U-6](#) [KMQXL-125G-12](#) [KMQXL-125U-6](#) [KQSS-18G-6](#) [KQXL-14U-36](#) [KQXL-18G-12](#) [KQXL-18U-12](#) [NB1-CAXL-14U-12](#) [NB3-CAXL-14U-18](#) [P-M-1/10-1/4-6-0-P-3](#) [PX309-015A5V](#) [PX309-1KGI](#) [PX309-10KGV](#) [PX309-100AI](#) [PX309-100AV](#) [PX309-100GI](#) [PX309-100GV](#) [PX309-3KG5V](#) [PX319-V050G5V](#) [PX319-005AI](#) [PX319-050A5V](#) [PX319-050GI](#) [PX319-10KGI](#) [PX319-100GV](#) [PX319-2KGI](#) [PX319-200AV](#) [PX319-200A5V](#) [PX319-300G5V](#) [PX319-5KG5V](#) [PX319-500G5V](#) [PX319-7.5KGI](#) [PX319-7.5KG5V](#) [PX329-1KG5V](#) [PX329-10KGI](#) [PX329-2KGI](#) [PX409-015DWUI](#) [PX409-015VUSBH](#) [PX409-015VV](#) [PX409-050A5V](#) [PX409-10WDWU5V](#)