



## RECOMMENDED GAP WIDTH

PCB + 10.8 mm (.425 in)

## RECOMMENDED TORQUE

113 N-cm (10 in-lbs)

With "L" option 163 N-cm (14 in-lbs)

## WEIGHT

2.70 g/cm (.241 oz/in)

## MATERIALS AND FINISH

### BRACKETS AND WEDGES

#### Material:

Aluminum Alloy 6061-T6 per  
per ASTM-B221 or AMS-QQ-  
A-200/8

#### Finish:

See finish table on opposite  
page

### SCREW, LOCK AND FLAT WASHER

0.09-in. or 2.5-mm hex. socket  
head cap screw, depending on  
mounting configuration

#### Material:

Stainless steel

#### Finish:

Passivated per AMS2700 and  
dry film lube as required

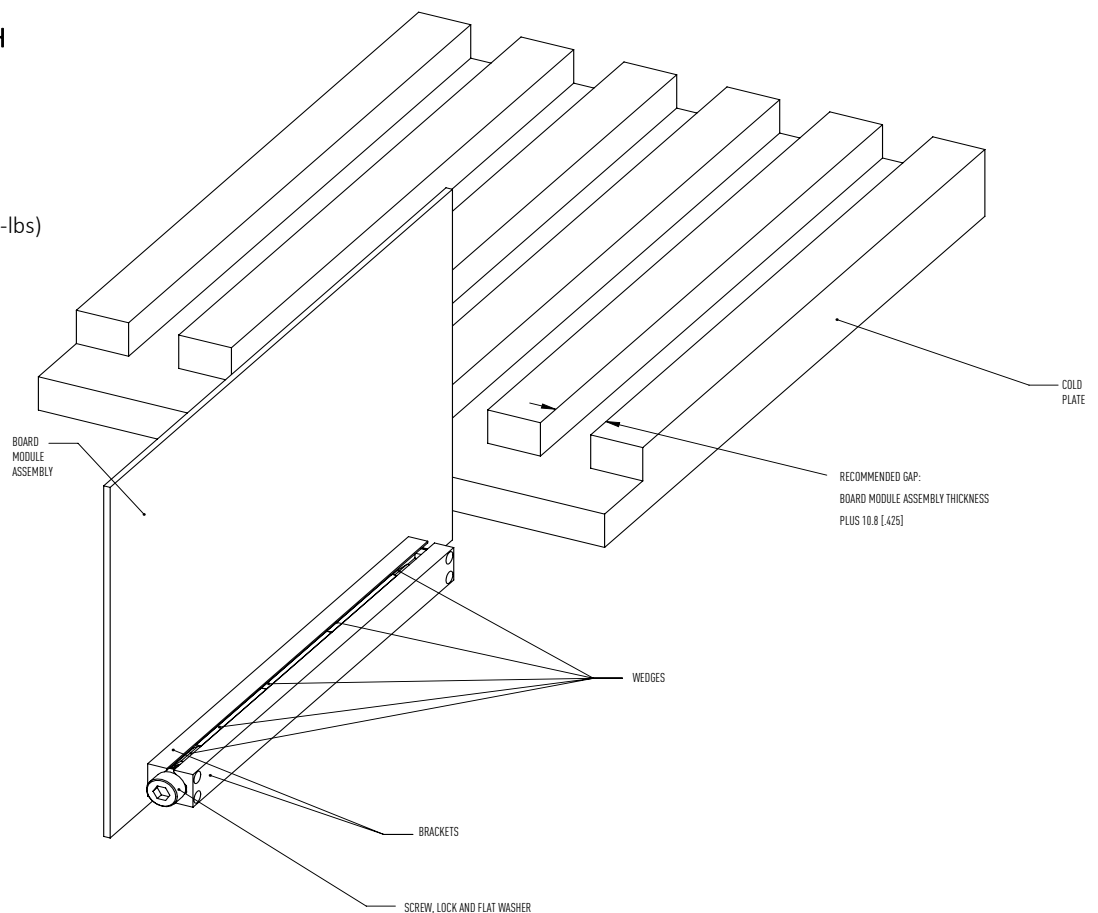
### ROLLPINS

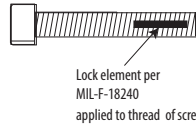
#### Material:

400 series stainless steel

#### Finish:

Passivated per AMS2700

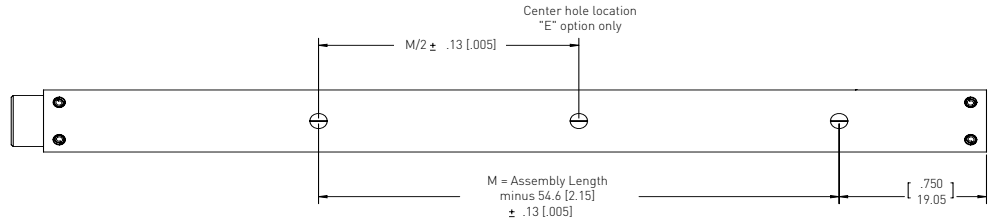
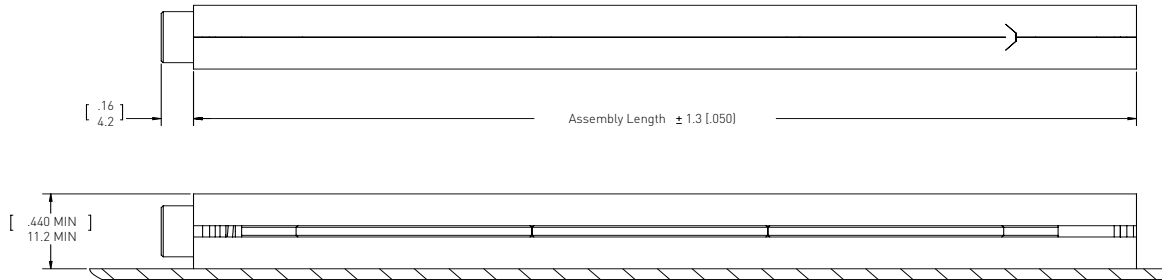
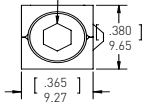




### Detail "L"

Provides prevailing torque for resistance to loosening from shock and vibration.  
Adds 50 N-cm (4 in-lbs) torque to assembly.

3.57 [.140] Hex Socket Cap  
Per ANSI/ASME B18.3



Units: mm [in]  
Unless otherwise specified:  
.xx ± .25, .x ± .5 (.xxx  
± .010, .xx ± .02) Note: Each  
piece has a tolerance of ± .010

Part Number Code	M	A	280HT - 3.80	E	T4	L
<b>Screw</b>						
Metric Screw Head M2.5 Hex Drive _____	M					
Standard Screw Head 3/32 Hex Drive__ [Blank]	[Blank]					
<b>Finish</b>						
BlackAnodized_____		A				
Or choose from Finish Table						
<b>Length</b>						
Length in 12.7 (.50) increments _____			96.52 [3.80]			
_____ to 325.12 [12.80]						
<b>Mounting</b>						
Additional Center Mounting Hole _____				E		
None _____				[Blank]		
Mounting Options - through mounting holes _____					T4	
Or choose from Mounting Method Table						
<b>Lock Patch</b>						
Lock Patch _____						L
None _____						[Blank]

Part Number Code example: A280HT-4.80T4  
Series 280HT Card-Lok five piece 121.9 (4.80) long with black anodize finish, 4-40 tapped hole for mounting.

### FINISH TABLE

CODE LETTER	SURFACE FINISH
"A"	BLACK ANODIZE PER MIL-A-8625 TYPE II, CLASS 2
"HA"	HARD BLACK ANODIZE PER MIL-A-8625 TYPE III, CLASS 2
"EN"	ELECTROLESS NICKEL PER MIL-C-26074 CLASS 4, GRADE B, BRIGHT

### MOUNTING METHOD TABLE

CODE LETTER	METHOD
"T4"	4-40 TAPPED HOLE
"TM3"	M3 x 0.50 TAPPED HOLE

## X-ON Electronics

Largest Supplier of Electrical and Electronic Components

*Click to view similar products for [schroff](#) manufacturer:*

Other Similar products are found below :

[24566-125](#) [14575171](#) [14575271](#) [14576145](#) [14575265](#) [20117-156](#) [20817772](#) [20827088](#) [20846211](#) [20860229](#) [21100777](#) [23022602](#) [23130082](#)

[24571331](#) [24571586](#) [24572066](#) [24822075](#) [26230-374](#) [30817-001](#) [30825080](#) [20849021](#) [20860240](#) [23001021](#) [24560080](#) [24571303](#)

[24572054](#) [24572056](#) [30219-113](#) [20848-410](#) [20838-125](#) [20860-601](#) [20860-633](#) [10225-602](#) [10225-623](#) [10828058](#) [13100103](#) [28230-439-C](#)

[24563-457](#) [24563-444](#) [20848-601](#) [21101-853](#) [20818-020](#) [21101-847](#) [24563-134](#) [24564-431](#) [24827-107](#) [24563-142](#) [24563-157](#) [24563-442](#)

[A265HC-5.80EH](#)