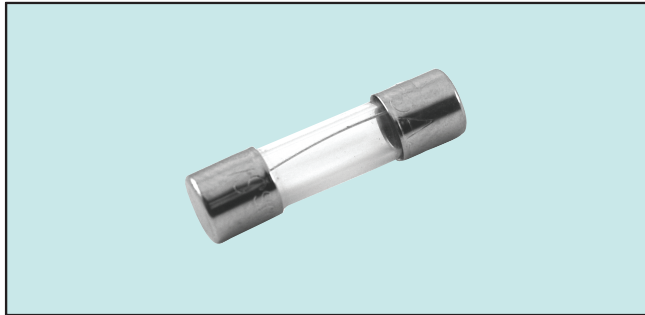


5 x 20mm Miniature Glass

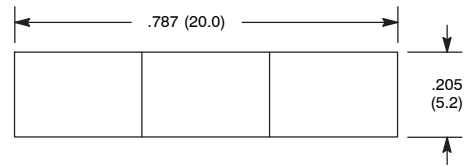


Features

- Available in Fast Acting and Slow Blow Types
- RoHS Compliant



F-02



Specifications

Rated Voltage: 125V / 250V

Breaking Capacity: 125VAC, 10KA; 250VAC, 20A

Time Current Characteristics:

% of Ampere Rating	Opening Time
110%	4 hours min.
135%	1 hour max.
200%	120 seconds max.

Ordering Information:

NTE Type No.		Rated Current	Diag No.
Fast Acting	Slow Blow		
74-5FG100MA		100mA	F-02
74-5FG125MA		125mA	F-02
74-5FG160MA		160mA	F-02
74-5FG200MA	74-5SG200MA **	200mA	F-02
74-5FG250MA	74-5SG250MA **	250mA	F-02
	74-5SG300MA **	300mA	F-02
74-5FG315MA		315mA	F-02
74-5FG400MA	74-5SG400MA **	400mA	F-02
74-5FG500MA	74-5SG500MA	500mA	F-02
	74-5SG600MA	600mA	F-02
74-5FG630MA		630mA	F-02
	74-5SG750MA	750mA	F-02
74-5FG800MA	74-5SG800MA	800mA	F-02
74-5FG1A	74-5SG1A	1.0A	F-02
74-5FG1.25A	74-5SG1.25A	1.25A	F-02
74-5FG1.6A	74-5SG1.6A	1.6A	F-02
74-5FG2A	74-5SG2A	2.0A	F-02
74-5FG2.5A	74-5SG2.5A	2.5A	F-02
	74-5SG3A	3.0A	F-02
74-5FG3.15A	74-5SG3.15A	3.15A	F-02
74-5FG4A	74-5SG4A	4.0A	F-02
74-5FG5A	74-5SG5A	5.0A	F-02
74-5FG6.3A		6.3A	F-02
	74-5SG7A	7.0A	F-02
74-5FG8A		8.0A	F-02
74-5FG10A		10A	F-02
NEW	74-5SG12.5A	12.5A	F-02
NEW	74-5FG15A	15A	F-02

** Not UL Approved.

X-ON Electronics

Largest Supplier of Electrical and Electronic Components

Click to view similar products for [nte manufacturer](#):

Other Similar products are found below :

[747](#) [797](#) [868](#) [1724](#) [NEH680M50FE](#) [NEHH1.0M450CB](#) [NTE48](#) [NTE526A](#) [228A](#) [231](#) [954](#) [2023](#) [47-20848-R](#) [510](#) [R04-11A30-120](#) [04-SLPE3750A](#) [5615](#) [591](#) [7056](#) [NTE5710](#) [7448](#) [NEH.10M50AA](#) [NEH2.2M63AA](#) [NEH330M35DD](#) [NEH33M10AA](#) [NEV.22M100AA](#) [TP0006-100](#) [NTE182](#) [NTE528](#) [NTE542](#) [NTE74154](#) [WH20-02-25](#) [04-SCBW25L-BK](#) [04-SCBW32L-BK](#) [04-SCW10C-BK](#) [04-SCBW19L-GR](#) [04-SCW19L-WH](#) [04-SCW19L-OR](#) [04-SCW38L-WH](#) [04-SCBW50L-OR](#) [04-SCBW50L-GR](#) [04-SCW10C-GR](#) [04-SCW10C-OR](#) [04-SCBW32L-GR](#) [04-SCBW32L-WH](#) [04-SCBW32L-OR](#) [04-SCBW6C-WH](#) [04-SCBW6C-GR](#) [04-SCBW6C-OR](#) [04-SCBW25L-GR](#)