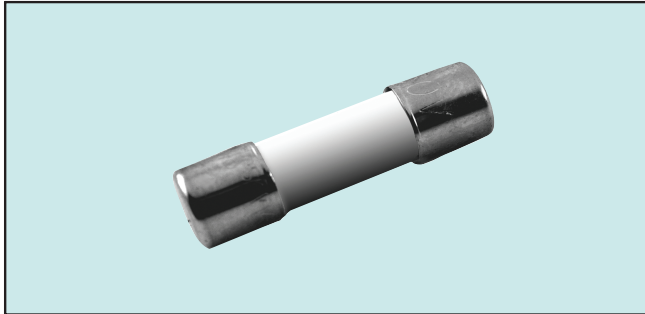


5 x 20mm Miniature Ceramic

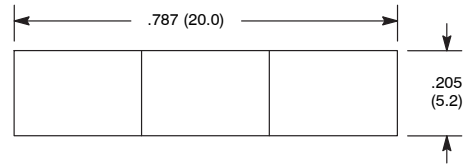


Features

- Available in Fast Acting and Slow Blow Types
- RoHS Compliant



F-03



Specifications

Rated Voltage: 250V

Breaking Capacity: 250VAC, 1500A

Time Current Characteristics:

Fast Acting

% of Ampere Rating		Opening Time			
		100mA to 4A	5A to 6.3A	8A to 10A	> 10A
210%	Max	30 minutes	30 minutes	30 minutes	30 minutes
275%	Min	10ms	10ms	40ms	40ms
	Max	2 seconds	3 seconds	20 seconds	30 seconds
400%	Min	3ms	3ms	10ms	10ms
	Max	300ms	300ms	1 second	1 second
1000%	Max	20ms	20ms	30ms	40ms

Slow Blow

% of Ampere Rating		Opening Time			
		100mA to 800mA	1A to 3.15A	4A to 10A	> 10A
210%	Max	30 minutes	30 minutes	30 minutes	30 minutes
275%	Min	250ms	750ms	750ms	1 second
	Max	80 seconds	80 seconds	80 seconds	80 seconds
400%	Min	50ms	95ms	150ms	150ms
	Max	5 seconds	5 seconds	5 seconds	5 seconds
1000%	Min	5ms	10ms	10ms	20ms
	Max	150ms	150ms	150ms	150ms

Ordering Information:

NTE Type No.		Rated Current	Diag No.
Fast Acting	Slow Blow		
74-5FC100MA		100mA	F-03
74-5FC125MA		125mA	F-03
74-5FC160MA		160mA	F-03
74-5FC200MA	74-5SC200MA	200mA	F-03
74-5FC250MA	74-5SC250MA	250mA	F-03
74-5FC315MA	74-5SC315MA	315mA	F-03
74-5FC400MA	74-5SC400MA	400mA	F-03
74-5FC500MA	74-5SC500MA	500mA	F-03
74-5FC630MA	74-5SC630MA	630mA	F-03
74-5FC800MA	74-5SC800MA	800mA	F-03
74-5FC1A	74-5SC1A	1.0A	F-03
74-5FC1.25A	74-5SC1.25A	1.25A	F-03
74-5FC1.6A	74-5SC1.6A	1.6A	F-03
74-5FC2A	74-5SC2A	2.0A	F-03
74-5FC2.5A	74-5SC2.5A	2.5A	F-03
74-5FC3.15A	74-5SC3.15A	3.15A	F-03
74-5FC4A	74-5SC4A	4.0A	F-03
74-5FC5A	74-5SC5A	5.0A	F-03
NEW 74-5FC6.3A	74-5SC6.3A	6.3A	F-03
NEW 74-5FC8A	74-5SC8A	8.0A	F-03
NEW 74-5FC10A	74-5SC10A	10A	F-03
NEW 74-5FC12A	74-5SC12A	12A	F-03
NEW 74-5FC12.5A	74-5SC12.5A	12.5A	F-03
NEW 74-5FC15A	74-5SC15A	15A	F-03
NEW 74-5FC16A		16A	F-03

X-ON Electronics

Largest Supplier of Electrical and Electronic Components

Click to view similar products for [nte manufacturer](#):

Other Similar products are found below :

[747](#) [797](#) [868](#) [1724](#) [NEH680M50FE](#) [NEHH1.0M450CB](#) [NTE48](#) [NTE526A](#) [228A](#) [231](#) [954](#) [2023](#) [47-20848-R](#) [510](#) [R04-11A30-120](#) [04-SLPE3750A](#) [5615](#) [591](#) [7056](#) [NTE5710](#) [7448](#) [NEH.10M50AA](#) [NEH2.2M63AA](#) [NEH330M35DD](#) [NEH33M10AA](#) [NEV.22M100AA](#) [TP0006-100](#) [NTE182](#) [NTE528](#) [NTE542](#) [NTE74154](#) [WH20-02-25](#) [04-SCBW25L-BK](#) [04-SCBW32L-BK](#) [04-SCW10C-BK](#) [04-SCBW19L-GR](#) [04-SCW19L-WH](#) [04-SCW19L-OR](#) [04-SCW38L-WH](#) [04-SCBW50L-OR](#) [04-SCBW50L-GR](#) [04-SCW10C-GR](#) [04-SCW10C-OR](#) [04-SCBW32L-GR](#) [04-SCBW32L-WH](#) [04-SCBW32L-OR](#) [04-SCBW6C-WH](#) [04-SCBW6C-GR](#) [04-SCBW6C-OR](#) [04-SCBW25L-GR](#)