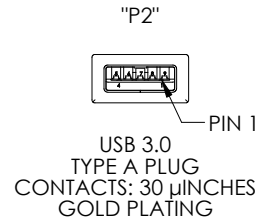
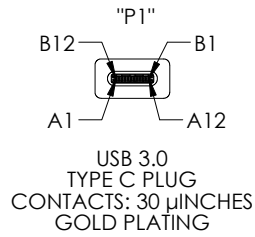
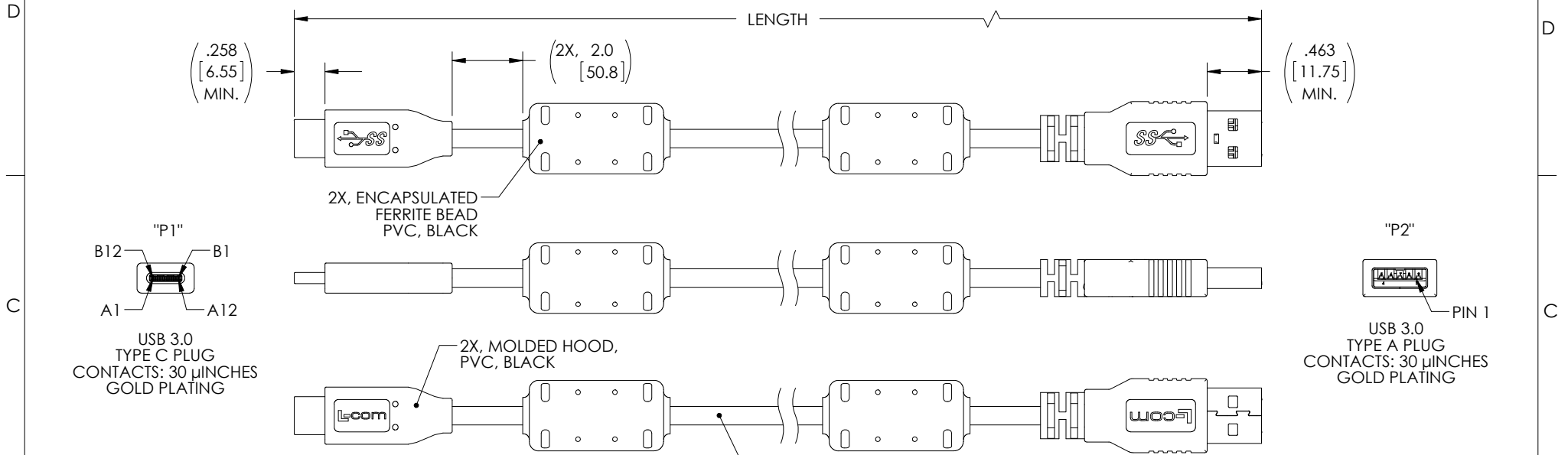


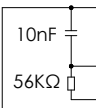
THE INFORMATION CONTAINED IN THIS DRAWING IS THE SOLE PROPERTY OF L-COM, INC. ANY REPRODUCTION IN PART OR WHOLE WITHOUT THE WRITTEN PERMISSION OF L-COM, INC. IS PROHIBITED.

REVISIONS			
REV	DESCRIPTION	DATE	APPROVED
A	INITIAL RELEASE	06/05/17	J.LABOY



UL STYLE 2725.
 (1) 32AWG STRANDED TINNED COPPER TWISTED PAIR
 (2) 32AWG SHIELDED STRANDED TINNED COPPER TWISTED PAIR WITH DRAIN WIRE
 (2) 26AWG STRANDED TINNED COPPER CONDUCTORS OVERALL ALUMINUM/POLYESTER SHIELD PLUS TINNED COPPER BRAID SHIELD JACKET: PVC, BLACK

WIRE MAP					
"P1"	SIGNAL NAME	CONDUCTOR	"P2"	SIGNAL NAME	COLOR
A1,B1,A12,B12	GND	INDV.	4	GND	BLACK
A4,B4,A9,B9	VBUS	SHIELDED PAIR DRAIN 1, DRAIN 2	7	GND_DRAIN	N/A
A5	CC	INDV.	1	VBUS	RED
B5	VCONN			N/C	
A6	Dp1	UNSHIELDED PAIR	3	D+	GREEN
A7	Dn1		2	D-	WHITE
A2	SSTXp1	SHIELDED PAIR 1	6	StdA_SSRX+	YELLOW
A3	SSTXn1		5	StdA_SSRX-	BLUE
B11	SSRXp1	SHIELDED PAIR 2	9	StdA_SSTX+	ORANGE
B10	SSRXn1		8	StdA_SSTX-	PURPLE
SHELL	SHIELD	BRAID	SHELL	SHIELD	N/A



PART NUMBER	LENGTH METERS [FEET]
U3A00011-05M	0.5 [1.64]
U3A00011-1M	1.0 [3.28]

- NOTES:**
- CABLE ASSEMBLY SHALL HAVE 360° SHIELD TERMINATION.
 - CABLE ASSEMBLY SHALL BE TESTED FOR CONTINUITY.
 - L-COM LOGO AND USB ICON MAY BE ON ANY SIDE OF THE OVERMOLD FOR USB SERIES "C" END.
 - CABLE ASSEMBLY SHALL BE INDIVIDUALLY PACKAGED IN ACCORDANCE WITH L-COM SPECIFICATION PS-0031.

REGULATORY COMPLIANCE:
 CE2011/65/EU(RoHS DIRECTIVE)

UNLESS OTHERWISE SPECIFIED, DIMENSIONS ARE IN INCHES [mm] OVERALL CABLE LENGTH TOLERANCE: ≤12 [305] = +1 [25] / -0 >12 [305] ≤60 [1524] = +2 [51] / -0 >60 [1524] ≤120 [3048] = +4 [102] / -0 >120 [3048] ≤300 [7620] = +6 [152] / -0 >300 [7620] = +5% / -0% ALL OTHER DIMENSIONAL TOLERANCES: .X = ± .2 [5.08] .XX = ± .02 [51] .XXX = ±.005 [1.27]	APPROVALS	DATE	50 HIGH STREET NORTH ANDOVER, MA 01845				
	DRAWN BY S.LI	04/28/2017		CATEGORY USB			
PROJECTION 	CHECKED BY B.ZHANG	04/28/2017	PRODUCT DESCRIPTION CA, USB 3.0 TYPE A/C W/FERRITE				
COLOR VARIATIONS MAY OCCUR	APPROVED BY S.PAN	04/28/2017	<table border="1"> <tr> <td>SIZE A</td> <td>FSCM NO. 43321</td> <td>DWG. NO. U3A00011</td> <td>REV. A</td> </tr> </table>	SIZE A	FSCM NO. 43321	DWG. NO. U3A00011	REV. A
SIZE A	FSCM NO. 43321	DWG. NO. U3A00011	REV. A				
SCALE: NONE		CAD FILE: U3A00011.SLDDRW					
			SHEET 1 OF 1				

X-ON Electronics

Largest Supplier of Electrical and Electronic Components

Click to view similar products for [l-com](#) manufacturer:

Other Similar products are found below :

[FOA-550A](#) [UMC-201](#) [CSMN50MF-5](#) [CSMNB15MF-15](#) [TRD815RA2BL-5](#) [CA3A-90DA-1M](#) [CTLF3VGAMM-20](#) [HDCAMM-3](#)
[U3A00007-05M](#) [U3A00014-03M](#) [CSMT15MF-10](#) [CSMT15MM-15](#) [CSMT15MM-25](#) [CSPL15MF-50](#) [CSPL25MF-25](#) [CSPL9MF-10](#)
[CSPL9MF-5](#) [CSPL25MF-5](#) [CSPL25MF-2.5](#) [AL-IPEPS](#) [NB201611-10F-1](#) [TDG1026KC5-MNL](#) [NB121005-10F](#) [TRD855SRA6DBL-10M](#)
[TRD855SRA7DBL-1M](#) [TRD855SRA7DBL-10M](#) [U2A00017-05M](#) [PR175SCDLCQ24](#) [TRG508-T4T-3M](#) [TRA5261-15F](#) [TRA5261S-1F](#)
[TRA6261-1F](#) [USBBFT](#) [DGB25M](#) [HG2403RD-RSF](#) [CASATAL-18](#) [CSM25MM-10](#) [CSM37MF-10](#) [CSUSB-100](#) [CA3A-90RA-1M](#) [CA3A-](#)
[90MICB-1M](#) [U2A00003-3M](#) [U3A00003-05M](#) [U2A00008-12I](#) [U3A00007-075M](#) [U3A00007-1M](#) [HGV-903U](#) [CSMT15MF-5](#)
[CSMT15MM-50](#) [CSPL15MF-25](#)