

# Data Sheet

## FR20CxxVBNN

Page 1/4

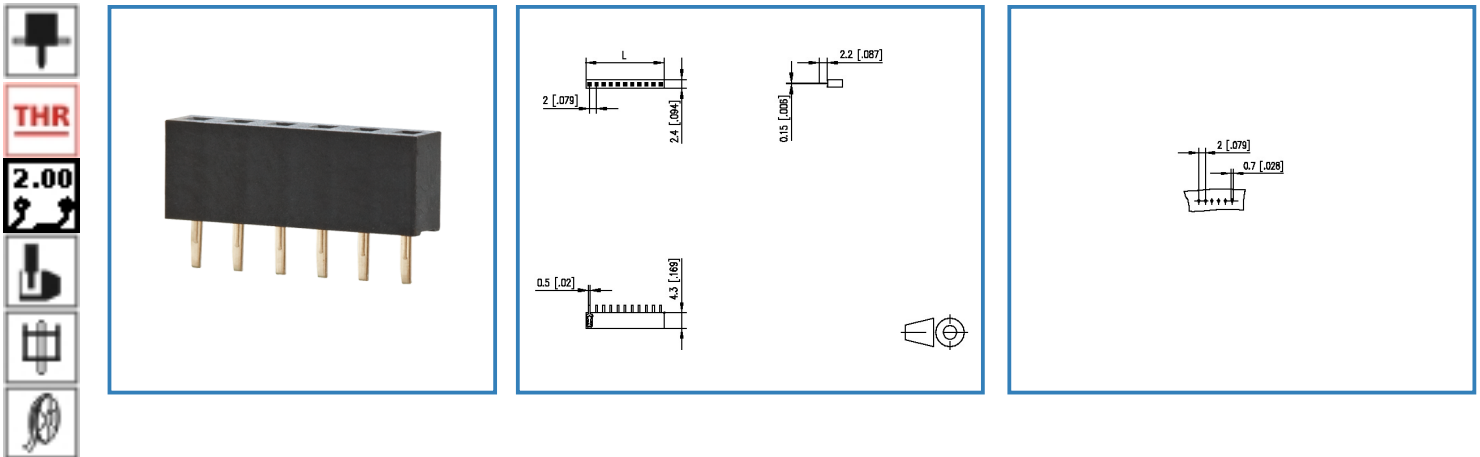
P/N

FR20CxxVBNN

xx=number of poles

2017/01/25

### Illustration



see enlarged drawing at the end of the document

### Product specification

- female connector, THR solderable
- centerline 2.00 mm, direction of connection vertical 0°
- closed ends
- color black
- Tape & Reel packaging
- single row

# Data Sheet

## FR20CxxVBNN

Page 2/4

P/N

FR20CxxVBNN

xx=number of poles

2017/01/25

### Technical Data

#### General Data

Solder pin length	2.20 mm
min. number of poles	2
max. number of poles	40
protection category	IP 00

#### Approvals

Rated current	1 A
---------------	-----

#### Material

insulating material	PE-HT
contact material	CuSn
Glow-Wire Flammability GWFI	-
Glow-Wire Flammability GWIT	-
contact surface	Ni + Au
contact pin material	CuSn
contact pin surface	Ni + Au Flash

#### Climatic properties

upper limit temperature	105 °C
lower limit temperature	-40 °C

#### General

solderability	Acc. to IPC/JEDEC J-STD-020D-MSL 1
Tolerance	ISO 2768 -mH

# Data Sheet

## FR20CxxVBNN

Page 3/4

P/N

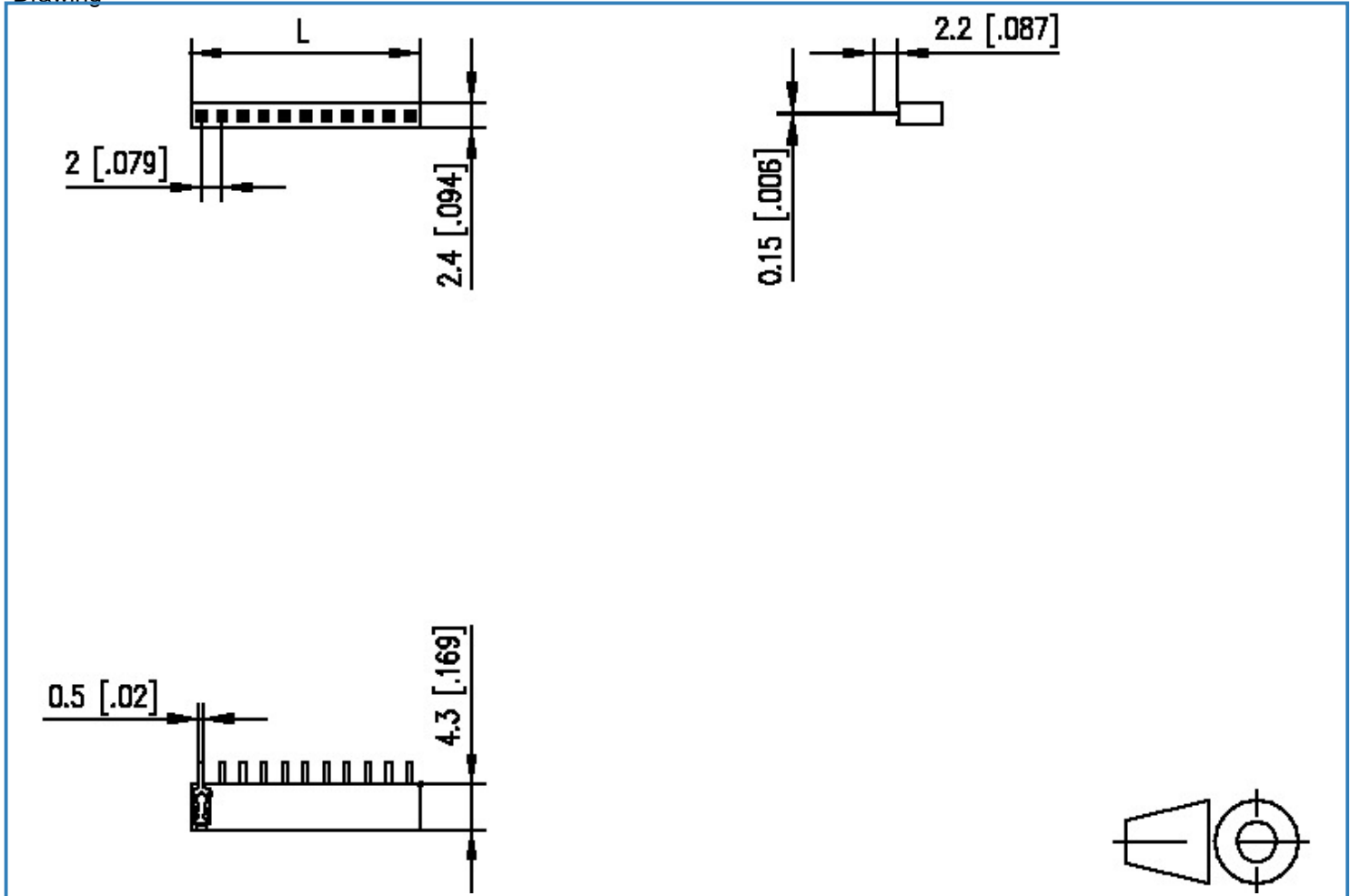
FR20CxxVBNN

xx=number of poles

2017/01/25

### Illustration

Drawing



$L = (\text{pole size} - 1) \times \text{centerline} + 2.0 [0.079]$



# Data Sheet

## FR20CxxVBNN

Page 4/4

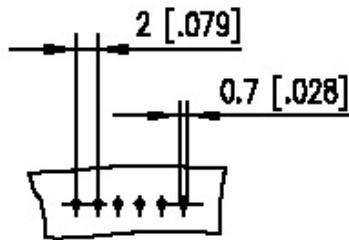
P/N

FR20CxxVBNN

xx=number of poles

2017/01/25

PCB Layout



## X-ON Electronics

Largest Supplier of Electrical and Electronic Components

*Click to view similar products for [metz manufacturer](#):*

Other Similar products are found below :

[ASP0631006](#) [142M1D11100](#) [142M2X19020](#) [142M2X25005](#) [AST0820406](#) [1108861321](#) [1108311319](#) [1108501319](#) [11089313](#)  
[142M2X1C050](#) [841ER-1.17L](#) [ASP0450401](#) [PT11608VBBN](#) [130920-E](#) [130924-E](#) [1108841319](#) [110304412004](#) [1108831326](#) [15024AD206-E](#)  
[150240C30310S](#) [135015-SSC-E](#) [1528SBGT19E](#) [PR04302VBBN](#) [142M2X15010](#) [31189102](#) [11085813](#) [810-500](#) [31336104](#) [ASP0430922](#)  
[AST0450504](#) [AST1350604](#) [SP06502VBNF](#) [31072103](#) [SP02512HDNC](#) [142M1D19020](#) [31251104](#) [31359104](#) [834B-375ML](#) [832WC-3L](#)  
[31009105](#) [31020205](#) [31024102](#) [31027103](#) [ASP0251204](#) [PR01503VBVC](#) [PT11504HBBF](#) [RP01505WBWC](#) [130922-03-E](#) [150240C30610E](#)  
[11027605](#)