

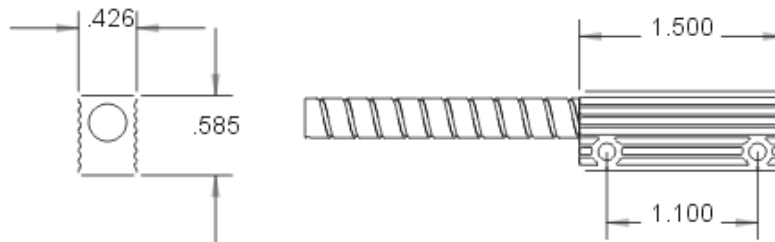
4460 Series Miniature Aluminum Commercial Surface Mount Switch Set



4460 Series Miniature Aluminum Commercial Switch Set

- Wide Gap Standard 1"+
- Miniature Size 1.5" L x 5/8" W
- Heavy Duty Extruded Aluminum
- Available with 18" Jacketed Or Armored Cable
- Closed Loop, Open Loop, SPDT
- Recommended For Institutional Use

A robust working gap and mounting versatility make the G.R.I. 4460 a top choice where good looks and adaptation to a rough environment are required.



4460 Series Miniature Aluminum Commercial Switch Set

Product Specification PDF's



[About PDF](#)



[4460 Series Miniature Aluminum Commercial Switch Set Product Specification PDF](#)

[\[Home\]](#) [\[Products\]](#) [\[What's New!\]](#) [\[Security Products\]](#) [\[Data Entry Peripherals\]](#) [\[Pushbutton Switches\]](#)
[\[Custom Engraved Keycaps\]](#) [\[Proximity Sensors\]](#) [\[Contact GRI\]](#) [\[About GRI\]](#)

Can't find what you are looking for?

Revised: Friday, September 13, 2013

Web design by [The Computer Guy](#) Copyright © 1997-2013

MINIATURE ALUMINUM COMMERCIAL SWITCH SET



4460 SERIES

- ◆ Wide Gap Standard at 1" Plus
- ◆ Miniature Size 1.5" L x 5/8" W
- ◆ Heavy Duty Extruded Aluminum
- ◆ Available With 18" Jacketed Or Armored Cable
- ◆ Custom Lead Lengths Available
- ◆ Closed Loop, Open Loop, SPDT, & DPDT
- ◆ Recommended For Institutional Use

The G.R.I. 4460 Series is a compact, nice looking and extremely rugged switch set offered with or without armored cable that looks like it belongs when installed and not added as an after thought.

The 4460 Series switch sets are resistant to nuisance vandalism and will blend in to the friendlier and more decorative atmosphere of today's institution whether it be health care or an educational facility.

A robust working gap and mounting versatility make the G.R.I. 4460 a top choice where good looks and adaptation to a rough environment are required.



4460A

PART NUMBERS:	Closed Loop	Open Loop	SPDT	DPDT
Standard Gap 1"	4460 4460A		4462 4462A	4463 4463A
Standard Gap 3/4" +		4461 4461A		

GEORGE RISK INDUSTRIES, INC.
G.R.I. PLAZA
KIMBALL, NE 69145



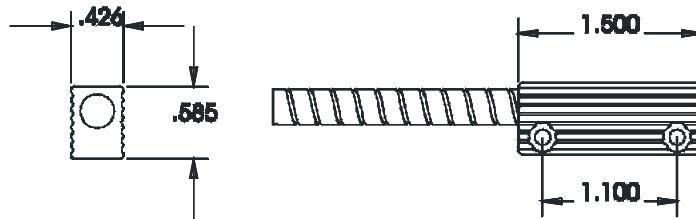
TOLL-FREE 1-800-445-5218
TOLL-FREE 1-800-523-1227
(308) 235-4645
FAX (308) 235-3561
E-MAIL: grisales@megavision.com
WEB SITE: www.grisk.com



MINIATURE ALUMINUM COMMERCIAL SWITCH SET

APPLICATION:

The G.R.I. 4460 series of contacts are miniature, low profile, extruded aluminum switches intended for installations in commercial and industrial applications where a rugged, encapsulated wide gap contact is required. Ideal for institutional use such as hospitals, schools, minimum detention facilities, etc. The 4460 and 4460A both offer the installer a 1" + working gap for loose fitting doors, gates, etc. Available in Closed Loop, Open Loop, SPDT and DPDT, this series of contacts can be purchased with 18" of jacketed wire leads or armored cable. Since the 4460 series is polarity sensitive, the poles are printed on the magnet case to indicate mounting direction. Mounting hardware and spacers provided with switch set. Optional S-44 mounting bracket sold separately.



4460A

GRI products meet or exceed these minimum general specifications:

PART NUMBER	LOOP TYPE	ELECTRICAL CONFIG.	REED FORM	MAXIMUM INITIAL CONTACT RESISTANCE (Ω)	MAXIMUM CONTACT RATING (W)	MAXIMUM SWITCHING VOLTAGE (VDC)	MAXIMUM SWITCHING CURRENT (A)
4460	Closed	N/O	A	.150	10	200	.500
4460A	Closed	N/O	A	.150	10	200	.500
4461	Open	N/C	B	.140	5	175VDC	.250
4461A	Open	N/C	B	.140	5	175VDC	.250
4462	Open/Closed	SPDT	C	.140	5	175VDC	.250
4462A	Open/Closed	SPDT	C	.140	5	175VDC	.250
4463	Open/Closed	DPDT	Cx2	.140	5	175VDC	.250
4463A	Open/Closed	DPDT	Cx2	.140	5	175VDC	.250

WARRANTY:

Lifetime warranty against workmanship, material and factory defects.

GEORGE RISK INDUSTRIES, INC.
GR.I. PLAZA
KIMBALL, NE 69145



MADE IN U.S.A.

TOLL-FREE 1-800-445-5218
TOLL-FREE 1-800-523-1227
(308) 235-4645

FAX (308) 235-3561

E-MAIL: grisales@megavision.com

WEB SITE: www.grisk.com

X-ON Electronics

Largest Supplier of Electrical and Electronic Components

Click to view similar products for [george risk industries](#) manufacturer:

Other Similar products are found below :

[PB-2020-W](#) [110-T-W](#) [28AWG-W](#) [100-TWG-W](#) [50R-12WG-W](#) [4460A](#) [55F-12WG-BA-W](#) [180-12-W](#) [29A-W](#) [2020-12-W](#) [4532](#) [DS-03](#) [RB-01-W](#) [N2020-T-W](#) [100-12](#) [100-T-W](#) [100-12WG-W](#) [PBF-2020-W](#)