

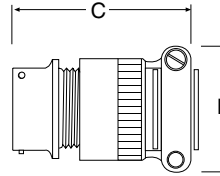
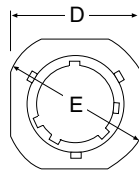
CONNECTORS TWIST-LOCK TYPE



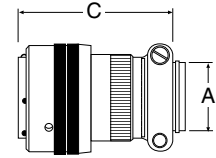
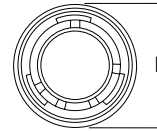
PT Series

- ✓ Rugged Aluminum Shells
- ✓ Rated to 125°C (257°F)
- ✓ Strain-Relief Cable Clamp
- ✓ Secure Solder Contacts
- ✓ #20 AWG Wire Size
- ✓ High-Conductivity Gold-Plated Contacts

MALE
PT01F



FEMALE
PT06F



The OMEGA® PT Series connectors provide an efficient method of connecting pressure transducers to associated instrumentation with multiconductor cable. The solder contacts are designed to provide positive connections for signal or power circuitry. The connectors come in a selection of operating temperature ranges to meet most industrial applications.

SPECIFICATIONS

Insulation Resistance @ 25°C (77°F):
5000 MΩ min

Voltage Drop: #20 contact, #20 wire,
at 7.5 A, 55 mV max

ENVIRONMENTALLY PROTECTED MODELS

Air Pressure: 30 psi (2 bar)
at -55°C (-67°F)

Durability: 500 cycles of coupling
and uncoupling

Shells: Aluminum alloy, 0.0003
cadmium plate with olive drab chromate
or Black Zinc (RoHS)

Insulators: Neoprene on all, except
silicone on PCS06E10-6S

Contacts: High-conductivity copper
alloy, 0.000050 gold over copper

Dimensions: mm (inch)

MODEL NO.	A DIA. MIN	B MAX	C MAX	D MAX	E ±0.020
PT01F8-4P	5.94 (0.234)	21.03 (0.828)	48.82 (1.922)	21.03 (0.828)	23.83 (0.938)
PT01F10-6P	7.54 (0.297)	22.63 (0.891)	48.82 (1.922)	24.23 (0.954)	26.97 (1.062)
PT06F8-4S	5.94 (0.234)	21.03 (0.828)	46.43 (1.828)	19.05 (0.750)	—
PT06F10-6S	7.54 (0.297)	22.63 (0.891)	46.43 (1.828)	21.82 (0.859)	—

To Order

MODEL NO.	NO. OF CONTACTS	TEMPERATURE RANGE	FEATURES
PT01F8-4P*	4 male	-55 to 125°C (-67 to 257°F)	Environmentally protected
PT01F10-6P*	6 male	-55 to 125°C (-67 to 257°F)	Environmentally protected
PT06A10-6S*	6 female	-55 to 125°C (-67 to 257°F)	Indoor use
PT06F8-4S*	4 female	-55 to 125°C (-67 to 257°F)	Indoor use
PT06F8-4SG*	4 female	-55 to 125°C (-67 to 257°F)	Internal sealing gland
PT06F10-6S*	6 female	-55 to 125°C (-67 to 257°F)	Indoor use
PTS06A10-6S*	6 female	-55 to 150°C (-67 to 302°F)	Extended temperature range
PCS06E10-6S*	6 female	-55 to 204°C (-67 to 399°F)	High temperature

Note: "P" suffix denotes male pins; "S" suffix denotes female sockets "*" suffix denotes RoHS.
Ordering Example: PT01F8-4P, 4 contacts, male, and PT06F8-4S, 4 contacts, female.

X-ON Electronics

Largest Supplier of Electrical and Electronic Components

Click to view similar products for [omega manufacturer](#):

Other Similar products are found below :

[PX309-5KGI](#) [SMPW-J-M](#) [5SC-TT-T-36-36](#) [5SRTC-TT-K-30-72](#) [MJP2-12-T](#) [CASS-116U-12](#) [CHAL-002](#) [DH-1-20-J-12](#) [GG-J-24-SLE-1000](#)
[HPC-AU-P](#) [HPC-IR-P](#) [KHSS-18G-RSC-12](#) [KMQIN-125U-6](#) [KMQXL-125G-12](#) [KMQXL-125U-6](#) [KQSS-18G-6](#) [KQXL-14U-36](#) [KQXL-](#)
[18G-12](#) [NB3-CAXL-14U-18](#) [PX309-100AI](#) [PX309-100AV](#) [PX309-100GV](#) [PX319-V050G5V](#) [PX319-V100G5V](#) [PX319-002GI](#) [PX319-](#)
[050GI](#) [PX319-100GV](#) [PX319-200AV](#) [PX319-200A5V](#) [PX319-300G5V](#) [PX319-500G5V](#) [PX319-7.5KGI](#) [PX319-7.5KG5V](#) [PX329-1KG5V](#)
[PX329-10KGI](#) [PX329-2KGI](#) [PX409-015VUSBH](#) [PX409-015VV](#) [PX409-050A5V](#) [PX409-1.0KGUSBH](#) [PX409-10WVI](#) [PX409-100A5V](#)
[PX409-5.0KG5V](#) [PX409-500GUSBH](#) [PX41T0-300GI](#) [PX419-250GI](#) [P10R-005](#) [SA1-RTD-4W-120](#) [SA1-T-72-SRTC](#) [SA1XL-K-SRTC](#)