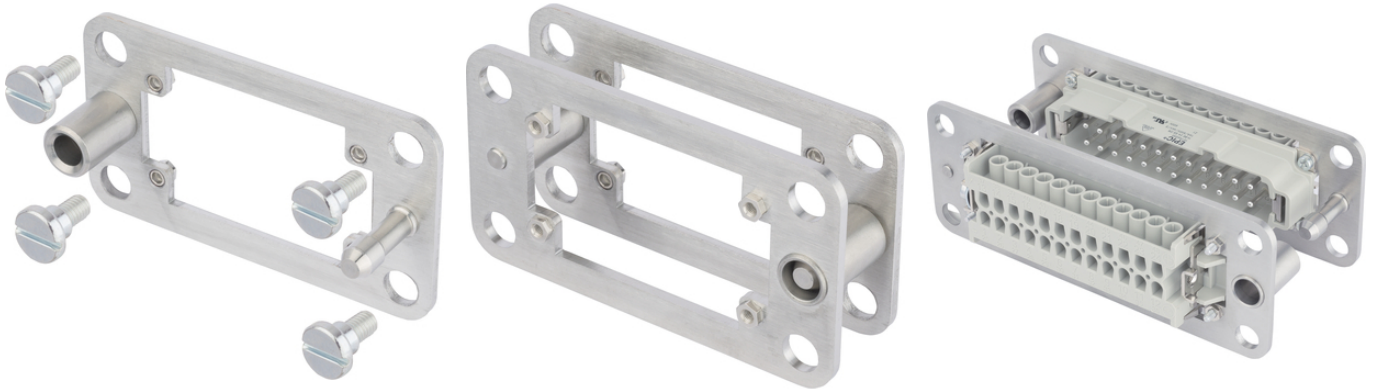


EPIC® Docking frame

The installation system for control cabinets is available as a set or as single components (upper part for the cable connector, lower part for installation to DIN rail).

Info

Mounting system for control cabinets
for float-mounting fixing of the inserts



Application range

Control cabinet manufacturing
Wind power plants

Product features

Scope of delivery for one part: 1 frame + 4 screws
Special screws adapted to frame
Pull-In range in x and y axis: + - 1,5mm

Technical Data

Classification:

ETIM 5.0 Class-ID: EC002312

ETIM 5.0 Class-Description: Contact insert holder for industrial connectors

Material:

Docking frame: stainless steel

Screws: steel zinc plated

Cycle of mechanical operation:

500

Note

Photographs are not to scale and do not represent detailed images of the respective products.
Prices are net prices without VAT and surcharges. Sale to business customers only.

Article number	Article description	Version
44429440	H-B 6 DF	4 fixing screws each in
44429441	H-B 10 DF	4 fixing screws each in
44429442	H-B 16 DF	4 fixing screws each in
44429443	H-B 24 DF	4 fixing screws each in

Last Update (24.09.2017)
 ©2017 Lapp Group - Technical changes reserved
 Product Management www.lappkabel.de
 You can find the current technical data in the corresponding data sheet.
 PN 0456 / 02_03.16

X-ON Electronics

Largest Supplier of Electrical and Electronic Components

Click to view similar products for [epic manufacturer](#):

Other Similar products are found below :

[44420040 + 73002716](#) [19426500](#) [72004000 + 73018000](#) [13.1623](#) [11161000](#) [11.1610](#) [9198+00022030](#) [72004000 + 73002756](#) [72000010](#)
[10.5310](#) [10.4264+10.4310](#) [72040010](#) [HA4-FK-TE-SM-M-M20](#) [10.4310](#) [10.1270+10.1970+12.9545](#) [10.4220+10.4320](#)
[10.4265+10.4235+10.4200+10.4210](#) [10121000+10196000+12954500](#) [10.0720](#) [44420037 + 73002752](#) [10102000](#) [10.4264](#) [8990+00022030](#)
[72004000 + 73002716](#) [10.4861](#) [44420037 + 73018000](#) [10.1210+10.1960+12.9545](#) [10.4881](#) [10.0220+10.0030+10.1900+10.1910+12.9544](#)
[10431000](#) [10.1920](#) [44420037 + 73028500](#) [13.1622](#) [44420037 + 73002716](#) [10.1900](#)