

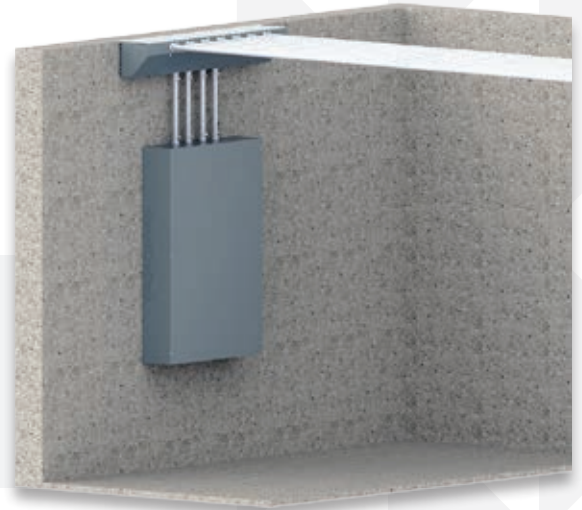
# ANGLED TROUGH

## A NEW ANGLE ON PULLING WIRES

The new Hoffman Angled Trough cuts total installation time by 80%. It eliminates the need for costly 90-degree conduit bends and offers flexibility for wire distribution, making it a time and cost saving solution for contractors.

*The Angled Trough is the enclosure that alleviates the labor, time, cost, and manpower it takes to make 90 degree conduit bends down to a large MCC center, and allows us to meet our job deadlines much easier.*

**Greg Bills, Sr. Applications Engineer Walker Industrial**

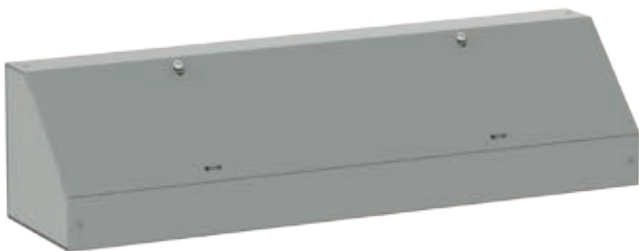


## APPLICATIONS:

Wire distribution, junctions and terminations in a variety of indoor commercial applications. The Angled Trough is suitable for applications above, below or to the side of electrical panels in electrical rooms, above modular ceilings, and as a more flexible alternative to the traditional trough.

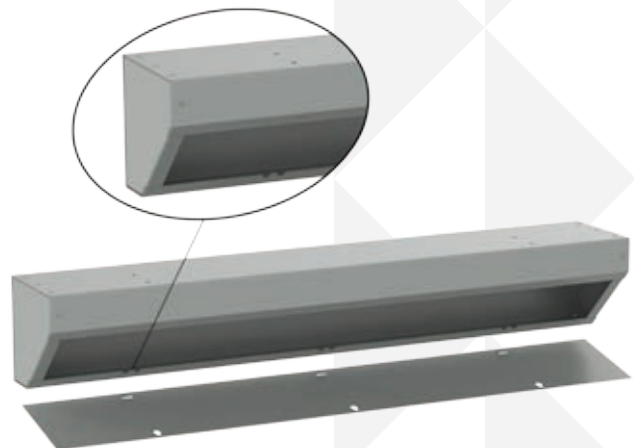
## MEASURABLE SAVINGS:

- No need to buy expensive 90-degree conduits, pre-fab or bend conduits at job site
- Faster cover install with only half the number of screws



## FEATURES:

- Flexible install allows conduit runs through six sides of enclosure, including the front
- Patented\* angled design does not take up valuable real estate on the wall
- Easy mounting via holes on the back of the enclosure
- Unique design is easy to assemble and offers a removable cover
- Shipped completely assembled with no end caps to install



*Hoffman*

\*U.S. Patent 9,178,342B2

## BULLETIN F40AT

Catalog Number	Model Code	AxBxC in	AxBxCmm	Max. Conduit Size in	Max. Conduit Size mm	No. of Cover Screws
AT6612	35585	6 x 6 x 12	152 x 152 x 305	1.25	32	1
AT6618	35586	6 x 6 x 18	152 x 152 x 455	1.25	32	2
AT6624	35587	6 x 6 x 24	152 x 152 x 610	1.25	32	2
AT6636	35588	6 x 6 x 36	152 x 152 x 914	1.25	32	3
AT6648	35592	6 x 6 x 48	152 x 152 x 1219	1.25	32	4
AT6660	35593	6 x 6 x 60	152 x 152 x 1524	1.25	32	5
AT6672	35594	6 x 6 x 72	152 x 152 x 1829	1.25	32	6
AT8824	35595	8 x 8 x 24	203 x 203 x 610	2	51	2
AT8836	35596	8 x 8 x 36	203 x 203 x 914	2	51	3
AT8848	35597	8 x 8 x 48	203 x 203 x 1219	2	51	4
AT8860	35598	8 x 8 x 60	203 x 203 x 1524	2	51	5
AT8872	35602	8 x 8 x 72	203 x 203 x 1829	2	51	6
AT101024	35604	10 x 10 x 24	254 x 254 x 610	3	76	2
AT101036	35605	10 x 10 x 36	254 x 254 x 914	3	76	3
AT101048	35606	10 x 10 x 48	254 x 254 x 1219	3	76	4
AT121224	35607	12 x 12 x 24	305 x 305 x 610	3	76	2
AT121236	35608	12 x 12 x 36	305 x 305 x 914	3	76	3
AT121248	35612	12 x 12 x 48	305 x 305 x 1219	3	76	4
AT121260	35613	12 x 12 x 60	305 x 305 x 1524	3	76	5
AT121272	35614	12 x 12 x 72	305 x 305 x 1829	3	76	6



[WWW.PENTAIRPROTECT.COM/HOFFMAN](http://WWW.PENTAIRPROTECT.COM/HOFFMAN)

### NORTH AMERICA

Minneapolis, MN  
Tel: +1.763.421.2240

Mexico, D.F.  
Tel: +52.55.5280.1449

Toronto, Canada  
Tel: +1.416.289.2770

### SOUTH AMERICA

Sao Paulo, Brazil  
Tel: +55.11.5184.2100

Boitura, Brazil  
Tel: +55.15.3363.9148

### EUROPE

Straubenhardt, Germany  
Tel: +49.7082.794.0

Dzierzoniow, Poland  
Tel: +48.74.64.63.900

Lainate, Italy  
Tel: +39.02.932.7141

Aachen, Germany  
Tel: +49.2405.40996.0

### MIDDLE EAST & INDIA

Dubai, United Arab Emirates  
Tel: +971.4.378.1700

Bangalore, India  
Tel: +91.80.6715.2001

### ASIA

Shanghai, P.R. China  
Tel: +86.21.2412.6943

Singapore  
Tel: +65.6768.5800

Shin-Yokohama, Japan  
Tel: +81.45.476.0271

Seoul, Korea  
Tel: +82.2.2129.7755

Qingdao  
Tel: +86.532.8771.6101

Pentair and Hoffman are owned by Pentair or its global affiliates. All other trademarks are the property of their respective owners.

© 2017 Pentair.

## X-ON Electronics

Largest Supplier of Electrical and Electronic Components

*Click to view similar products for [hoffman manufacturer](#):*

Other Similar products are found below :

[F-44LE45B](#) [A-1412CHQR](#) [CSD201610](#) [CSD20168SS](#) [CSD20206](#) [CSD20208SS](#) [CSD24168](#) [CSD36248](#) [PCU7](#) [PDS76R](#) [PRA197TP](#) [PT126](#)  
[A1008CHNFSS](#) [A10106CH](#) [A10106CHFL](#) [A10106PHCW](#) [A1066JFGQRR](#) [A1210CHNF](#) [A1212SC](#) [A1412CHNFSS](#) [A161208LP](#)  
[A161410CH](#) [A16H12ALP](#) [A16P14](#) [A16P16G](#) [A18P16AL](#) [A20H16BLP](#) [A20P16](#) [A24H2408SSLP](#) [Q13138PCE](#) [A404CH](#) [A606CHNF](#)  
[A606NF](#) [A806SC](#) [A845JFGR](#) [A864CHQRFGW](#) [A90P36F1](#) [HJ1412HWPL2LG](#) [HJ1816HWPL2LG](#) [RHJ1210HWPL2LG](#) [AS125SS](#)  
[ASE10X10X4](#) [ASE12X12X4](#) [E1PBG](#) [E2PBG](#) [E3PB](#) [LED24V15](#) [LF230VD](#) [A10106PHC](#) [A10P8SS](#)