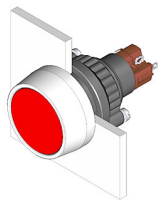


EAO – Your Expert Partner for Human Machine Interfaces

14-271.0252 - Illuminated pushbutton actuator

14-271.0252 - Illuminated pushbutton actuator



Attention: The preview is based on a sample product. This can differ from your current configuration.

Mounting

Mounting cut-out Design Ø 22,3 mm raised

Front

Front dimension Ø 29 mm
Front shape round

Other Attributes

Weight 0,013 kg

Operating-/Indication part

Lens illumination illuminative

IP-Rating

Front protection IP67

Connection Method

Terminal Solder

Actuator

Switching action Maintain
Housing colour black
Housing material Plastic

Switching element

Switching system Snap-action switching element
Switching current 5 A
Contacts 1 NC + 1 NO
Contact material
Switching voltage 250 V AC

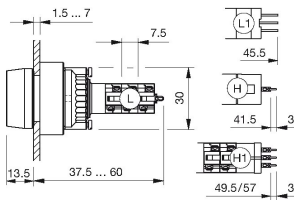
Function

Illuminated pushbutton

EAO – Your Expert Partner for Human Machine Interfaces

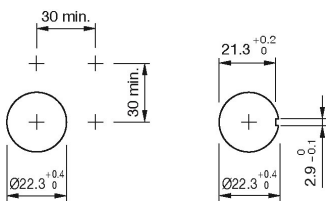
14-271.0252 - Illuminated pushbutton actuator

Dimensions

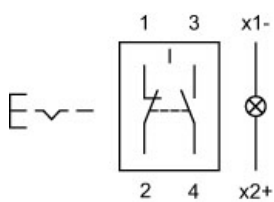


L = Solder terminal

Mounting cut-outs



Wiring diagram



Legend

Contacts: NC = Normally closed, NO = Normally open
Switching action: C = Maintained

X-ON Electronics

Largest Supplier of Electrical and Electronic Components

Click to view similar products for [eao manufacturer](#):

Other Similar products are found below :

[01-951.5](#) [21-931.0](#) [01-261.022](#) [02-072.001](#) [61-0029.0](#) [61-221.50D](#) [61-2601.0/D](#) [61-2701.0/D](#) [61-8640.11](#) [61-8720.17](#) [704.062.218](#)
[704.113.0](#) [704.117.0](#) [704.121.0](#) [704.411.018I](#) [704-6012](#) [704.901.1](#) [704.902.3](#) [704-9051](#) [704.950.0](#) [EUS-704.000.7](#) [82-4151.2144](#) [82-4153.1000](#) [84-8001.9640](#) [84-8515.8640](#) [92-343.400](#) [95-900.005](#) [14-136.025K](#) [14-810.910](#) [200-4000-00](#) [200-4001-00](#) [22-212.011](#) [95-900.009](#) [22-225.011](#) [22-901.2](#) [31-426.036](#) [31-953.7](#) [45-1231.21N6.000.101](#) [45-2134.4F10.000](#) [45-2234.11H0.000](#) [45-280X.1C90.003](#) [45-2C37.1920.000](#) [45-2T00.10E0.000](#) [51-401.036K](#) [51-901.4](#) [31-953.3](#) [31-955.4](#) [41-461.036](#) [41-908.5/5](#) [45-1131.3150.000.101](#)