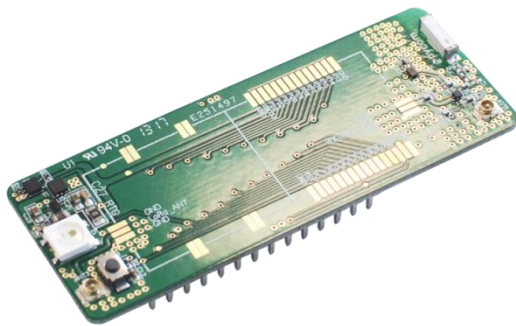




REFERENCE BOARD USED TO MOUNT AND TEST PYCOM OEM MODULES

Reference Board



Description

Reference Board used to mount either Pycom OEM modules. Provides the same functionality and pin-out as the developer version of the modules and can be mounted straight-out-of the box.

Contains:

- RGB LED
- 5V to 3.3V DC-DC switching regulator
- u.fl connector for the LoRa antenna
- Dual antenna options for WiFi/Bluetooth
- Male header pins

Note: L01 not Included / ONLY 1 Reference Board per order due to LOW stocks

Additional information

Weight

0.02 kg

X-ON Electronics

Largest Supplier of Electrical and Electronic Components

Click to view similar products for [pycom](#) manufacturer:

Other Similar products are found below :

[SIPY RCZ2 & RCZ4](#) [RFIDANTENNAKIT](#) [OEM Reference Board](#) [WIPY 2.0](#) [REFERENCE BOARD](#) [Pycase Clear](#) [G01](#) [SiPy 22 dBm](#)
[604565430465](#) [604565286048](#) [PYCASE GREEN](#) [SIPY RCZ1 & RCZ3](#) [604565285911](#) [L04](#) [Pycase Grey](#) [PYCASE BLUE](#) [WiPy 3.0](#)
[604565285904](#) [604565286017](#) [W01](#) [SiPy 14 dBm](#) [700461242598](#) [PYSENSE](#) [LoRa Antenna](#) [Pycase](#) [604565286024](#) [Expansion Board V3](#)
[PYSCAN ANTENNAS](#) [LoPy 4.0](#) [L01](#) [LOPY4](#) [PYTRACK](#) [Pyscan](#) [SIGFOX/ LORA ANTENNA KIT](#) [UNIVERSAL EXPANSION BOARD](#)
[FiPy](#) [Gpy](#) [LTE Antenna Kit](#)