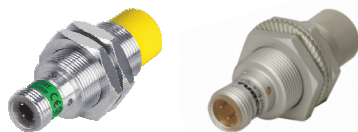


Inductive Sensors



Housing Style	Part Number	ID Number	Features	Sensing Range (mm)	Output	
18 mm - Nonembeddable, eurofast® Connection 	Ni 8-M18-AD4X-H1141	T4414700		8	2-Wire DC	
	Ni 8-M18-AD4X-H1144	T4411288		8		
	Ni 14-M18-AD4X-H1141	T4417241	Ext. Range	14		
	Ni 14-M18-AD4X-H1144	T4417290	Ext. Range	14		
	Ni 8-M18-AN6X-H1141	T4614800		8	3-Wire DC NPN	
	Ni 10-M18-AN6X-H1141	T4614892		10		
	Ni 12U-EM18-AN6X-H1141	M1645350	Uprox	12		
	Ni 12U-EM18-AN6X2-H1141	M1645355	Uprox	12		
	Ni 12U-M18-AN6X-H1141	M1645150	Uprox	12		
	Ni 14-M18-AN6X-H1141	T4611410	Ext. Range	14		
	Ni 15U-EM18-AN6X-H1141	M1635336	Uprox+ Stainless steel	15		
	Ni 15U-M18-AN6X-H1141	M1635335	Uprox+	15		
	Ni 8-M18-AP6X-H1141	T4614700		8	3-Wire DC PNP	
	Ni 10-M18-AP6X-H1141	T4641291		10		
	Ni 12U-EM18-AP6X-H1141	M1645340	Uprox	12		
	Ni 12U-EM18-AP6X2-H1141	M1645345	Uprox	12		
	Ni 12U-M18-AP6X-H1141	M1645140	Uprox	12		
	Ni 12U-M18-AP6X2-H1141	M1645145	Uprox	12		
	Ni 14-M18-AP6X-H1141	T4611400	Ext. Range	14		
	Ni 15U-EM18-AP6X-H1141	M1635332	Uprox+ Stainless steel	15		
	Ni 15U-M18-AP6X-H1141	M1635331	Uprox+	15		
	Ni 8-M18-VN4X-H1141	T1571900	Comp. Outputs	8	4-Wire DC NPN	
	Ni 14-M18-VN4X-H1141	T4590603	Ext. Range	14		
	Ni 8-M18-VP4X-H1141	T1561900	Comp. Outputs	8	4-Wire DC PNP	
	Ni 14-M18-VP4X-H1141	T4590602	Ext. Range	14		
	Ni 10-M18-Y1X-H1141	M4015300		10	2-Wire NAMUR	
	18 mm - Nonembeddable, eurofast Connection, PTFE Coated 	Ni 12U-MT18-AN6X-H1141	M1645250	Uprox	12	3-Wire DC NPN
		Ni 15U-MT18-AN6X-H1141	M1635337	Uprox+ PTFE	15	
		Ni 15U-MT18-AN6X-H1141/S1589	M16353370	Uprox+ PTFE, weldguard	15	
		Ni 12U-MT18-AP6X-H1141	M1645240	Uprox	12	3-Wire DC PNP
		Ni 12U-MT18-AP6X2-H1141	M1645245	Uprox	12	
		Ni 12U-MT18H-AP6X-H1141/S1589	M1645292	weldguard Uprox	12	
Ni 12U-MT18H-AP6X2-H1141/S1589		M1645293	weldguard Uprox	12		
Ni 15U-MT18-AP6X-H1141		M1635333	Uprox+ PTFE	15		
Ni 15U-MT18-AP6X-H1141/S1589		M1635333-1	Uprox+ PTFE, weldguard	15		

For detailed sensor specifications see Section M.
Normally Closed versions available upon request, consult factory.



Voltage	Switching Freq. (Hz)	Operating Current (mA)	Operating Temp. (°C)	Protection	Housing	Face	Power LED	Output LED	Mating Cordset	Wiring Diagram #	Wiring Diagrams
10-65 VDC	500	≤100	-25 to +70	IP 67	CPB	PA 12	N/A	YE	RK 4.2T-*	1	Diagram 1
	500	≤100	-25 to +70	IP 67	CPB	PA 12	N/A	YE	RK 4.23T-*	2	
	500	≤100	-25 to +70	IP 67	CPB	PA 12	N/A	YE	RK 4.2T-*	1	
	500	≤100	-25 to +70	IP 67	CPB	PA 12	N/A	YE	RK 4.23T-*	2	
10-30 VDC	1000	≤200	-25 to +70	IP 67	CPB	PA 12	N/A	YE	RK 4T-*	3	Diagram 2
	1000	≤200	-25 to +70	IP 67	CPB	PA 12	N/A	YE	RK 4T-*	3	
	2000	≤200	-30 to +85	IP 68	SS	PA 12	N/A	YE	RKV 4T-*	3	
	2000	≤200	-30 to +85	IP 68	SS	PA 12	GN	YE	RKV 4T-*	3	
	2000	≤200	-30 to +85	IP 67	CPB	PA 12	N/A	YE	RK 4T-*	3	
	500	≤200	-25 to +70	IP 67	CPB	PA 12	N/A	YE	RK 4T-*	3	
	1000	≤200	-30 to +85	IP 68	SS	LCP	N/A	YE	RK 4T-*	3	
10-30 VDC	1000	≤200	-30 to +85	IP 68	CPB	LCP	N/A	YE	RK 4T-*	3	Diagram 3
	1000	≤200	-25 to +70	IP 67	CPB	PA 12	N/A	YE	RK 4T-*	4	
	1000	≤200	-25 to +70	IP 67	CPB	PA 12	N/A	YE	RK 4T-*	4	
	2000	≤200	-30 to +85	IP 68	SS	PA 12	N/A	YE	RKV 4T-*	4	
	2000	≤200	-30 to +85	IP 68	SS	PA 12	GN	YE	RKV 4T-*	4	
	2000	≤200	-30 to +85	IP 67	CPB	PA 12	N/A	YE	RK 4T-*	4	
	2000	≤200	-30 to +85	IP 67	CPB	PA 12	GN	YE	RK 4T-*	4	
	500	≤200	-25 to +70	IP 67	CPB	PA 12	N/A	YE	RK 4T-*	4	
10-65 VDC	1000	≤200	-30 to +85	IP 68	SS	LCP	N/A	YE	RK 4T-*	4	Diagram 4
	1000	≤200	-30 to +85	IP 68	CPB	LCP	N/A	YE	RK 4T-*	4	
10-65 VDC	1000	≤200	-25 to +70	IP 67	CPB	PA 12	N/A	YE	RK 4.4T-*	5	Diagram 5
	1000	≤200	-25 to +70	IP 67	CPB	PA 12	N/A	YE	RK 4.4T-*	5	
10-65 VDC	1000	≤200	-25 to +70	IP 67	CPB	PA 12	N/A	YE	RK 4.4T-*	6	Diagram 6
	1000	≤200	-25 to +70	IP 67	CPB	PA 12	N/A	YE	RK 4.4T-*	6	
5-30 VDC	500	Remote	-25 to +70	IP 67	CPB	PA 12	N/A	YE	RK 4.21T-*	7	Diagram 7
10-30 VDC	2000	≤200	-30 to +85	IP 67	TC	TC	N/A	YE	RK 4T-*	3	
	1000	≤200	-30 to +85	IP 68	TC	LCP	N/A	YE	RK 4T-*	3	
	1000	≤200	-30 to +85	IP 68	TC	WG	N/A	YE	RKC 4T-*/S1587	3	
10-30 VDC	2000	≤200	-30 to +85	IP 67	TC	TC	N/A	YE	RK 4T-*	4	
	2000	≤200	-30 to +85	IP 67	TC	TC	GN	YE	RK 4T-*	4	
	2000	≤200	-30 to +85	IP 67	TC	WG	N/A	YE	RKC 4T-*/S1587	4	
	2000	≤200	-30 to +85	IP 67	TC	WG	GN	YE	RKC 4T-*/S1587	4	
	1000	≤200	-30 to +85	IP 68	TC	LCP	N/A	YE	RK 4T-*	4	
	1000	≤200	-30 to +85	IP 68	TC	LCP	N/A	YE	RK 4T-*	4	

Barrels

For material descriptions see page M36.

X-ON Electronics

Largest Supplier of Electrical and Electronic Components

Click to view similar products for [turck](#) manufacturer:

Other Similar products are found below :

[BI10-M30-AP6X-H1141](#) [BI2-G12-AZ33X-7M](#) [BS4151-0/13.5](#) [NI12U-G18-ADZ30X2-B1331](#) [NI12U-M18-AN4X](#) [BI1.5-G08K-AN6X](#) [BI5-G18-AZ3X](#) [BI5-G18-AZ3X-B1331-50MM](#) [VB20](#) [B 5143-0](#) [BI 2-EG08K-AP6X-V1131](#) [BMWS 8151-0/9](#) [BI30U-CK40-AP6X2-H1141](#) [NI12U-M18-AP6X-H1141](#) [NI4U-EG08-AN6X-H1341](#) [NI5-G12-AP6X-H1141](#) [NI14-G18-ADZ30X2](#) [BC10-QF5.5-RN6X2](#) [PKG 3M-4/S90](#) [B1N360V-Q20L60-2LU3-H1151](#) [FKFD 4.5](#) [RK40-2M](#) [BI5-G18-AP6X-B1441/S34](#) [RK 4T-10](#) [BI4-M12-AN6X-H1141](#) [NI3-EG08K-Y1-H1341](#) [BCF5-S18-RP4X/S90](#) [BI5-M18-Y0X-H1141](#) [NI35U-CK40-ADZ30X2-B3131](#) [W/BS4](#) [WK 4T-2](#) [IM1-22EX-T](#) [NI12U-MT18-AP4X-H1141](#) [BI1.5-EG08-AP6X-H1341](#) [BC 5-Q08-AP6X2-V1131](#) [BC5-S18-Y1X](#) [CT 2-A30/M](#) [C10-T13X/024VDC](#) [FDN20-4S-4XSG-E](#) [FKV-CC](#) [FSFD 8](#) [NI4U-EG08-RP6X-V1131](#) [CMBS 8141-0](#) [FEN20-16DXP](#) [BI10-M30-AN6X-H1141](#) [VB80-P7X9-8/CS12](#) [FKFD 8](#) [RI360P0-QR24M0-INCRX2-H1181](#) [PKW 3M-6](#) [NI8-M18E-VN4X](#) [WK 4.5T-2/S618](#)