

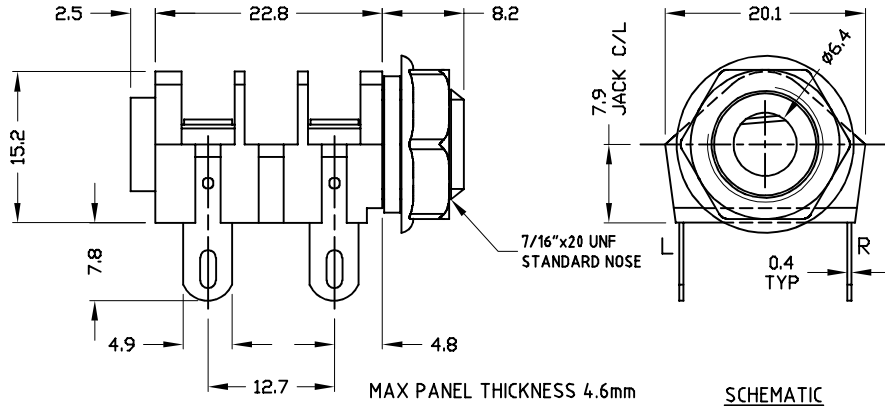
CLIFF

GOLD JACK SOCKETS

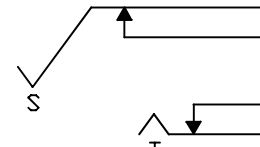
6.35mm JACK SOCKET



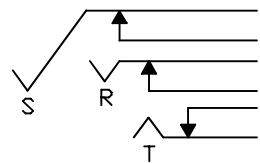
CL11607



SCHMATIC



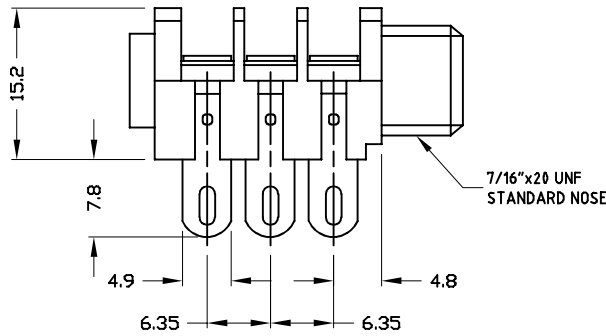
MONO (BNB) JACK
SWITCH CONTACTS OPEN WHEN PLUG IS INSERTED + CLOSE WHEN PLUG IS WITHDRAWN.



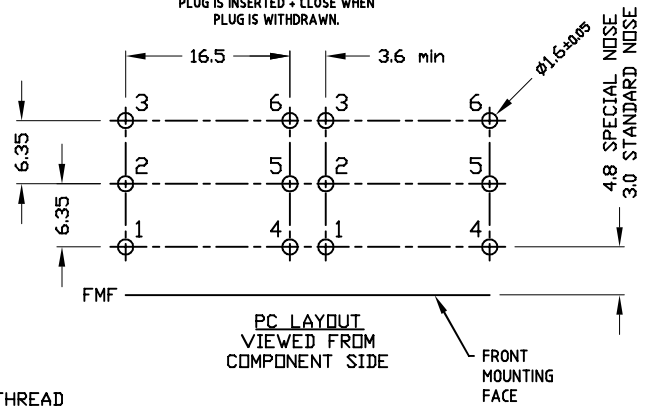
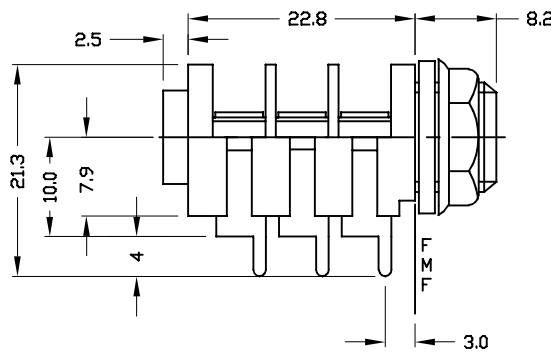
STEREO (BBB) JACK
SWITCH CONTACTS OPEN WHEN PLUG IS INSERTED + CLOSE WHEN PLUG IS WITHDRAWN.



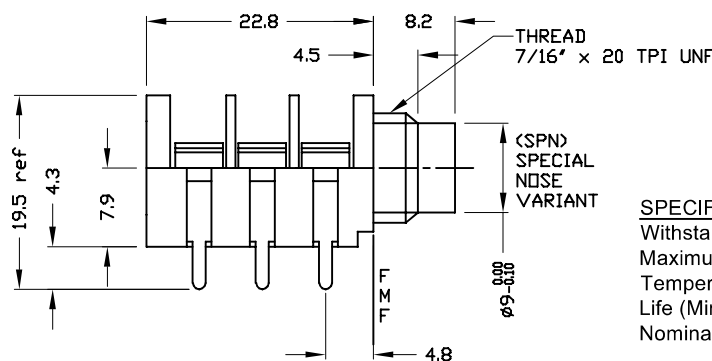
CL12207



CL12327



CL12345



SPECIFICATION

Withstand voltage: 2000V DC Min.
Maximum Current: 5A
Temperature Rating: -10° C to +70° C
Life (Minimum): 10,000+ Operations
Nominal Contact Resistance: <50mΩ

DESCRIPTION

CL11607 - Jack Socket Mono S2/BNB Solder Tag

CL12207 - Jack Socket Stereo S2/BBB Solder Tag

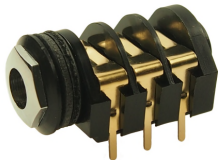
CL12327 - Jack Socket Stereo S2/BBB PC Tag Type A.

CL12345 - Jack Socket Stereo S2/BBB Special Nose PC Tag Type C. No nut or washers.

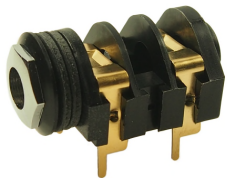
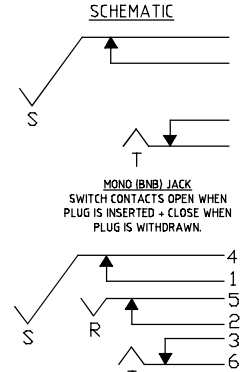
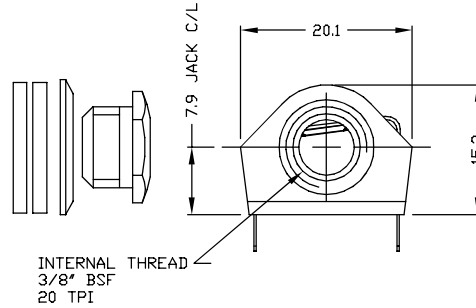
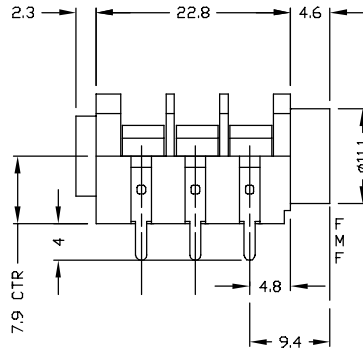
CLIFF

GOLD JACK SOCKETS

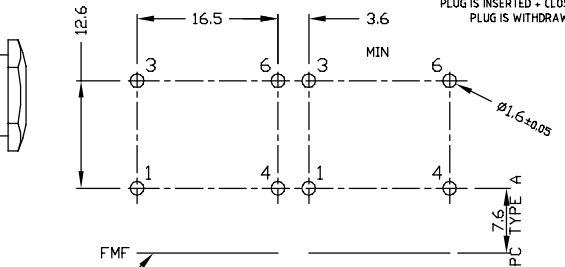
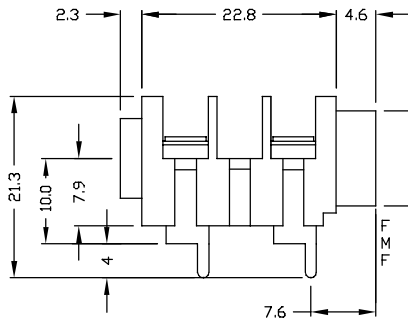
6.35mm JACK SOCKET



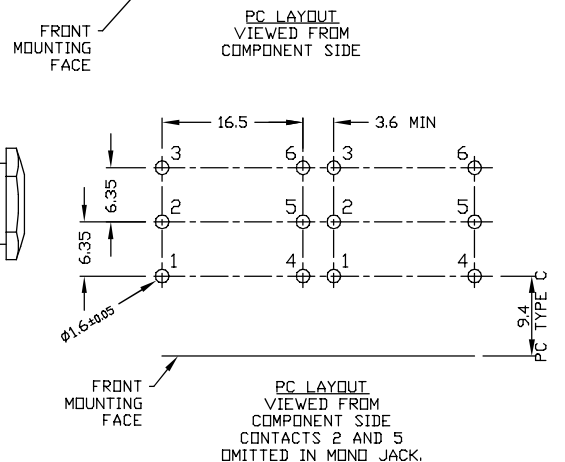
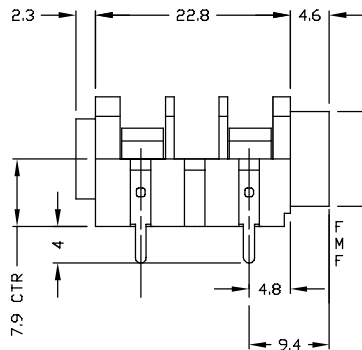
CL13345



CL1308G



CL13106G



DESCRIPTION

- CL13345** - Jack Socket Stereo S4/BBB PC tag type C
- CL1308G** - Jack Socket Mono S4/BNB PC tag type A
- CL13106G** - Jack Socket Mono S4/BNB PC tag type C

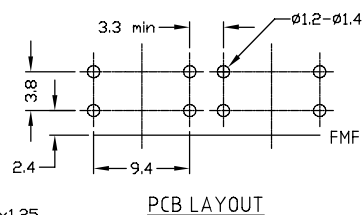
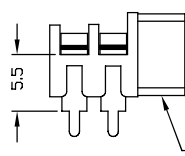
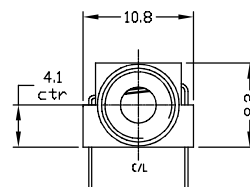
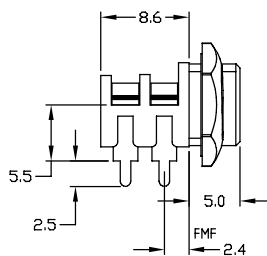
3.5mm JACK SOCKET



CL13845G



CL13843G



DESCRIPTION

- CL13845G** - 3.5mm Jack Socket S6G/BB with nut
- CL13843G** - 3.5mm Jack Socket S6G/BB without nut

CLIFF

GOLD JACK SOCKETS

3.5mm JACK SOCKET



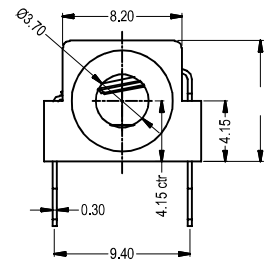
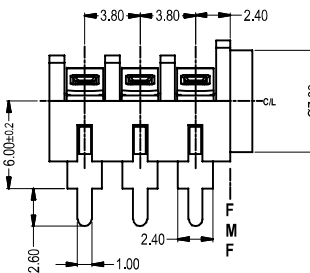
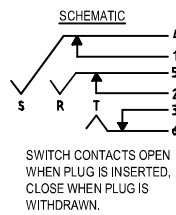
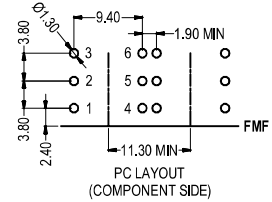
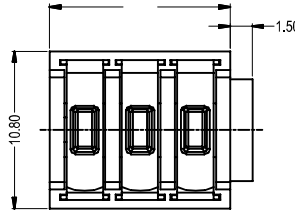
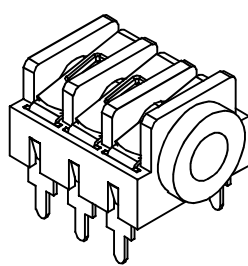
FCR1295G

SPECIFICATIONS

- WITHSTAND VOLTAGE: 2000V DC min
- MAXIMUM CURRENT: 5A
- TEMPERATURE RANGE: -10°C TO +70°C
- LIFE (MINIMUM): 5,000+ OPERATIONS
- CONTACT RESISTANCE <math>< 50\text{m}\Omega</math>

DESCRIPTION

CL1295G - 3.5mm Stereo Jack Socket S9/BBB with 6mm PCB legs



JACK SOCKET ACCESSORIES



FCR14422 - EMI / RFI SCREEN FOR 6.35mm JACK SOCKETS

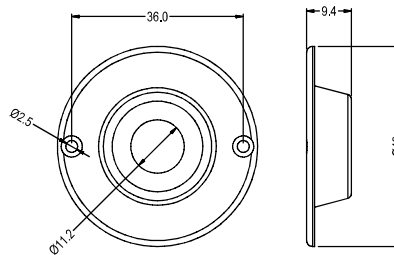


CL14218 - BLACK COMBINED NUT/BEZEL FOR S4 TYPE JACK SOCKET



CL14218GY - GREY COMBINED NUT/BEZEL FOR S4 TYPE JACK SOCKET

CL1396 - RECESS PLATE TO ALLOW FLUSH MOUNTING OF 6.35mm JACK SOCKETS



X-ON Electronics

Largest Supplier of Electrical and Electronic Components

Click to view similar products for [cliff](#) manufacturer:

Other Similar products are found below :

[SRP1 BLACK](#) [CL1423](#) [CL1432](#) [CL159825BA](#) [CL19192RB](#) [CL2160B TP/6 CS](#) [CL-SFE/1 FILTERS](#) [HFRP-01](#) [S2/BBB \(CL1220A\)](#)
[CIH206011](#) [CL14218](#) [CP30117](#) [CP30214M](#) [FM686813](#) [CL11061 S1V/SBB](#) [CL11607](#) [CL12345](#) [CL1308G](#) [CL13106G](#) [CP22R](#) [CP30152](#)
[CP30211](#) [CP303011X](#) [CL1406](#) [CL15501A](#) [CL1572](#) [CL681561](#) [CP30173](#) [CP30176](#) [CP30178](#) [CP30179](#) [CP30180](#) [CP30500C](#) [CP30202M3](#)
[FCR1295](#) [FCR2065](#) [FCR7360B](#) [FM686816](#) [CIH29950](#) [CP30225SM](#) [CP30170](#) [CP30174](#) [CIH684216](#) [FW6190](#) [CP30182](#) [CP30184](#)
[CP30202M](#) [CIH3021](#) [CP30208NMB](#) [CP30222SMB](#)