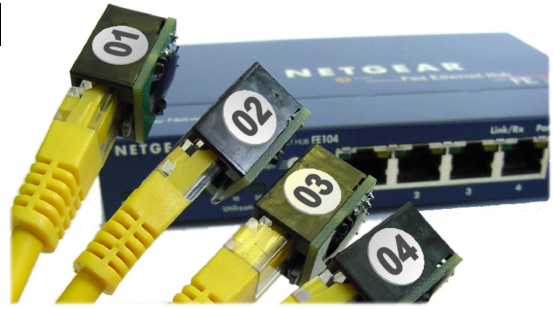


## ID Terminator - Supplement Guide

The *Peak Atlas IT* together with the *ID Terminators* will provide the facility of cable run identification in addition to the existing functions of cable type identification and verification.

The ID Terminators are ideal for situations when more than one cable run is to be identified and tested.



Simply use any number of the *ID Terminators* on one end of each of your network cables (or network sockets by using patch cables). The *Atlas IT* will automatically detect the presence of the *ID Terminator* and display its identity following the display of the detected cable type (straight through or crossover).

If the cable being tested has a fault (such as a short circuit or broken connections) the terminator ID code may not be displayed. If the cable is faulty because of swapped lines or incorrectly ordered lines, the ID code will be displayed as normal.

The *Atlas IT* will display all the usual information too, such as the full connection pattern and the details of any faults found.

## Replacement ID Terminators

If an *ID Terminator* is damaged or lost, you can easily obtain replacement units from Peak Electronic Design Limited or an authorised agent.

[www.peakelec.co.uk](http://www.peakelec.co.uk)

---

## **X-ON Electronics**

Largest Supplier of Electrical and Electronic Components

*Click to view similar products for [peak manufacturer](#):*

Other Similar products are found below :

[ELSM](#) [IDT8A](#) [RJA11](#) [UPS56](#) [ATC55](#) [UTP05](#) [LLSM](#) [CRC01M](#) [CRC01](#) [IDT8B](#) [IDT8C](#) [ATPK3](#) [PAT02](#) [LCD02](#) [LCRLHP2](#) [IDTN](#) [ENP90](#)  
[ATC02](#) [DCA75](#) [LCR-40](#) [ESR70](#)