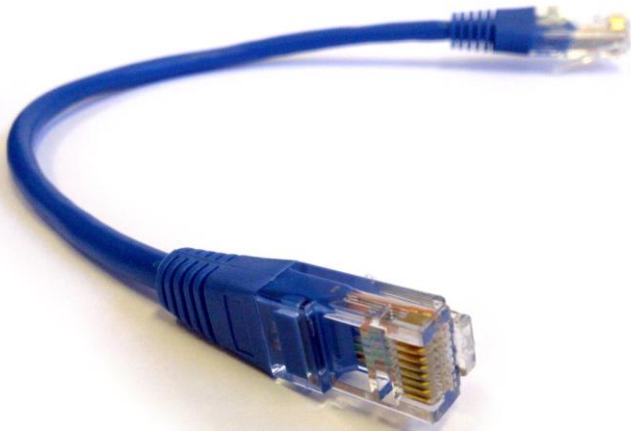


MPN	Description
PAT02	RJ45 Cat5 Patch Cable for Atlas IT



RJ45 8-way patch cable for use with the Peak Atlas IT Network Cable Analyser (Model UTP05).

## Features

- Short patch cable ideal for use with test equipment.
- Flexible stranded cores (not solid cores like many Cat5 cables).
- Moulded RJ45 plugs.
- Built-in strain relief.
- Gold plated contacts.
- Non-Booted for much easier unlatching from sockets.

## Specification Summary

Cable Category	5e (UTP)
Shield	None
Wire type	Stranded Copper (7x0.1mm)
Length (tip to tip)	25 - 30cm (9.8" - 11.8")

Terminations	RJ45-8 Male
Latch Type	Non-Booted

<b>Dimensions per product</b>	250-300mm (9.8" - 11.8")
<b>Dimensions per product (packaged)</b>	150 x 100 x 15 mm (5.9" x 3.9" x 0.6")
<b>Weight per product (nett)</b>	0.015kg
<b>Weight per product (packaged inc docs)</b>	0.020kg
<b>Fundamental Materials</b>	Plastic and metal.
<b>Certification</b>	CE, WEEE, ROHS

## **X-ON Electronics**

Largest Supplier of Electrical and Electronic Components

*Click to view similar products for [peak manufacturer](#):*

Other Similar products are found below :

[ELSM](#) [IDT8A](#) [RJA11](#) [UPS56](#) [ATC55](#) [UTP05](#) [LLSM](#) [CRC01M](#) [CRC01](#) [IDT8B](#) [IDT8C](#) [ATPK3](#) [PAT02](#) [LCD02](#) [LCRLHP2](#) [IDTN](#) [ENP90](#)  
[ATC02](#) [DCA75](#) [LCR-40](#) [ESR70](#)