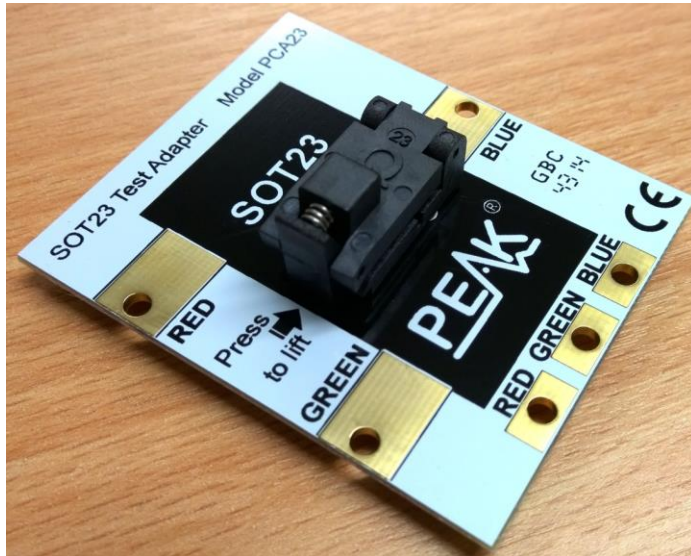


MPN	Description
PCA23	SOT23 TEST ADAPTER

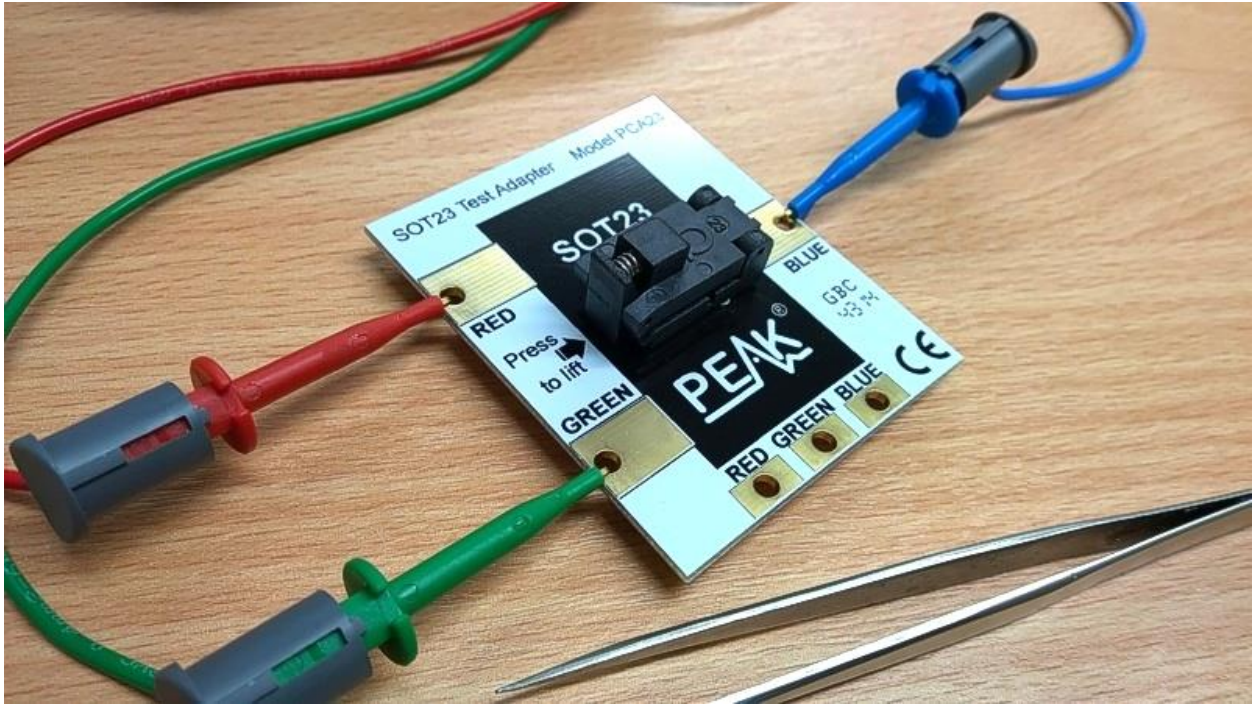


This beautiful SOT23 test adapter is designed to complement your DCA55 or your DCA75 (or any other semiconductor tester). It's extremely easy to use thanks to the special spring-loaded SOT23 socket assembly. Your SOT23 part is gently and securely held against gold plated sprung contacts with a carefully controlled contact force.

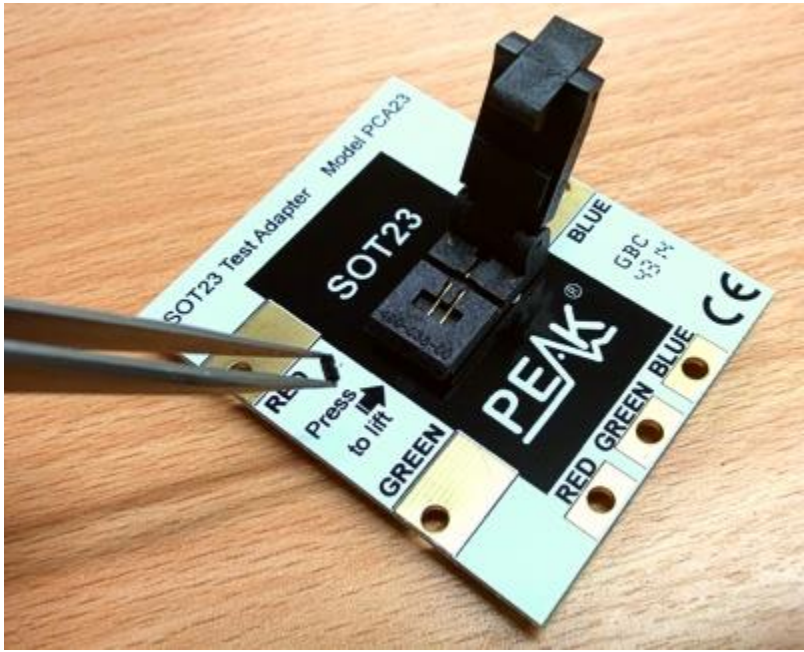
The adapter is designed to look like a giant SOT23 part, so it's easy to visualise the pinout of the part inside when using the DCA55 or DCA75.

The unit is supported on 4 non-slip feet which also serves to keep the unit slightly raised from your work surface allowing for easier connections using micro-hooks or croc clips.

The large area gold plated pads are also great for multimeter prods.



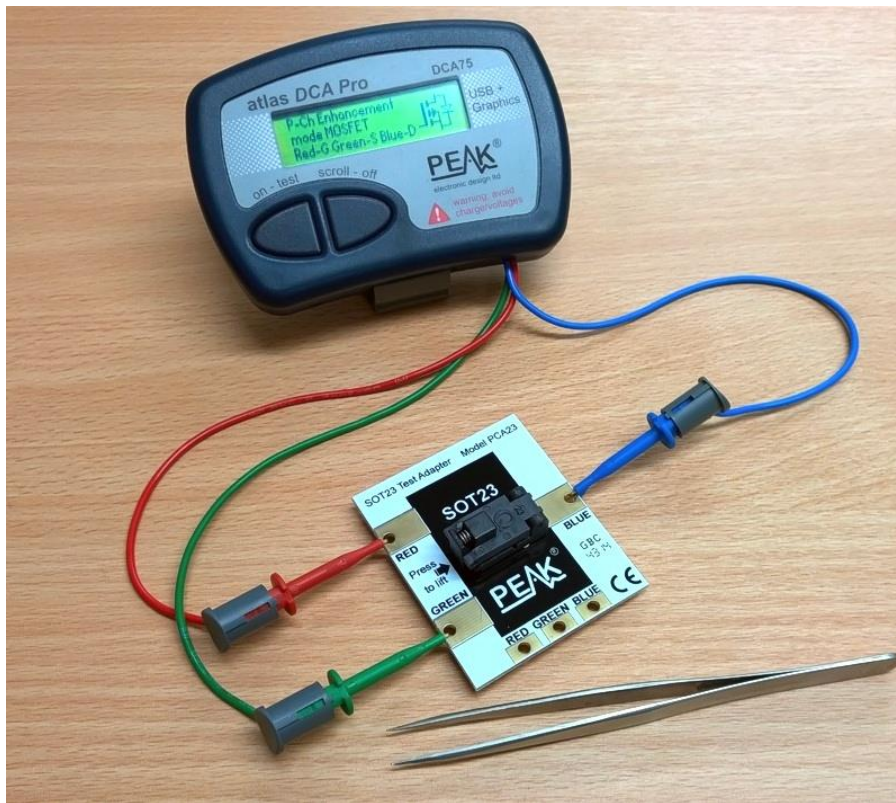
SOT23 Test Adapter in use



Pick up your SOT23 component...



...and place it inside the adapter, close the lid.



Connect your tester using the selection of the gold plated test pads

## Summary Specifications

<b>Suitability</b>	SOT23 3 pins
<b>Max current capability</b>	100mA
<b>Max voltage capability (1)</b>	50Vac, 75Vdc
<b>SOT23 contact material</b>	Gold flash
<b>SOT23 contact resistance</b>	<10mΩ
<b>Test pad contact material</b>	Gold flash
<b>Pad-pad track resistance (2)</b>	<20mΩ
<b>Temperature Range (3)</b>	-34°C to 65°C -55°C to 155°C
<b>Weight</b>	13 grams
<b>Dimensions</b>	50 x 60 x 17mm

(1) To comply with Low Voltage Directive 2006/95/EC.

(2) Measured between both "red" pads, or both "green" pads, or both "blue" pads.

(3) (3) Temperature range of -34°C to 65°C limited by polyethylene feet. Limit of the rest of the assembly is -55°C to 155°C.

## **X-ON Electronics**

Largest Supplier of Electrical and Electronic Components

*Click to view similar products for [peak manufacturer](#):*

Other Similar products are found below :

[ELSM](#) [IDT8A](#) [RJA11](#) [UPS56](#) [ATC55](#) [UTP05](#) [LLSM](#) [CRC01M](#) [CRC01](#) [IDT8B](#) [IDT8C](#) [ATPK3](#) [PAT02](#) [LCD02](#) [LCRLHP2](#) [IDTN](#) [ENP90](#)  
[ATC02](#) [DCA75](#) [LCR-40](#) [ESR70](#)