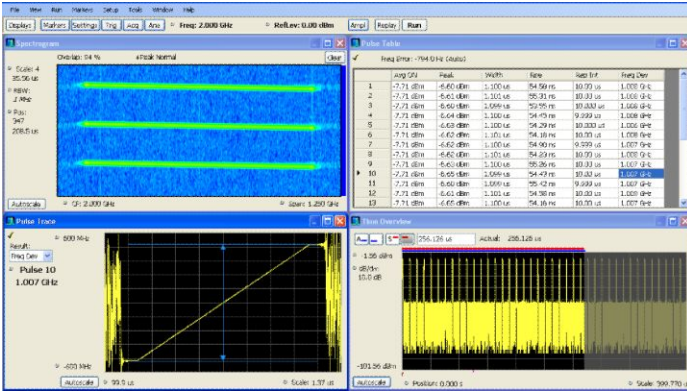


Vector and RF Suite of Signal Analysis Software for PC

SignalVu-PC-SVE Applications Datasheet



SignalVu-PC is the foundation of RF and vector signal analysis software that helps you easily validate RF designs. It is based on the signal analysis engine of the RSA5000 Series real-time signal analyzers and runs on your computer or Windows tablet. You can now move your analysis of acquisitions off the instrument and anywhere. SignalVu-PC is also the companion software that runs the analysis for the Tektronix USB real-time spectrum analyzers. Whether your design validation needs include wideband radar, high data rate satellite links, wireless LAN or frequency-hopping communications, the SignalVu-PC comprehensive suite of tools and application software can speed your time-to-insight by showing you the time-variant behavior of these signals.

Key features

- Analyzes waveforms acquired by Tektronix real-time signal analyzers and oscilloscopes, including:
 - Tektronix real-time and mixed-domain oscilloscopes (MDO/MSO/DPO3000, MDO/MSO/DPO4000, MSO/DPO5000, DPO7000C, DPO/ DSA/MSO70000 Series)
 - Tektronix real-time signal analyzers (RSA3000, RSA5000, RSA6000, SPECMON Series, RSA500, RSA600, and RSA306 Series)
 - Turn the MDO4000B/C Series into the industry's only 1 GHz Vector Signal Analyzer using Connect (CON-SVPC)
- Analyze without acquisition hardware present
- Analyze wideband designs
- Free up instruments for further use while analysis occurs offline
- Enable analysis at multiple sites without purchasing additional hardware
- Use your Windows tablet or your powerful PC workstation
 - Windows 7 (64 bit), Windows 8 (64 bit), and Windows 10 compatible

- Node Locked and Floating License available for each SignalVu-PC optional application
- Analyze
 - Extensive time-correlated, multi-domain displays connect problems in time, frequency, phase, and amplitude for quicker understanding of cause and effect when troubleshooting
 - Power measurements and signal statistics help you characterize components and systems: ACLR, Multicarrier ACLR, Power vs. Time, CCDF, and OBW/EBW
 - EMC/EMI pre-compliance and troubleshooting with RSA signal analyzers - CISPR detectors, predefined standards, limit lines, easy accessory setup, ambient capture, failure analysis, and report generation
 - WLAN spectrum and modulation transmitter measurements based on IEEE 802.11 a/b/g/j/p/n/ac/ad standards
 - Bluetooth® Transmitter Measurements based on Bluetooth SIG RF specifications for Basic Rate, Low Energy, and Bluetooth 5. Some support of Enhanced Data Rate
 - Settling time measurements, frequency, and phase for characterization of wideband frequency-agile oscillators
 - Advanced Pulse analysis suite - automated pulse measurements provide deep insight into pulse train behavior. Measurement pulse statistics over many acquisitions (millions of pulses).
 - General purpose digital modulation analysis provides modulation analysis of 23 modulation types
 - Flexible OFDM analysis of custom OFDM signals
 - Frequency offset control for analyzing baseband signals with near-zero intermediate frequencies (IF)
 - AM/FM/PM modulation and audio measurements for characterization of analog transmitters and audio signals
 - Simple and complete APCO Project 25 transmitter compliance testing and analysis for Phase 1 (C4FM) and Phase 2 (TDMA)
 - Playback of recorded files from the USB spectrum analyzers (RSA306, RSA500, and RSA600)
 - LTE™ FDD and TDD Base Station (eNB) Transmitter RF measurements
 - Signal Classification and Survey
 - Mapping

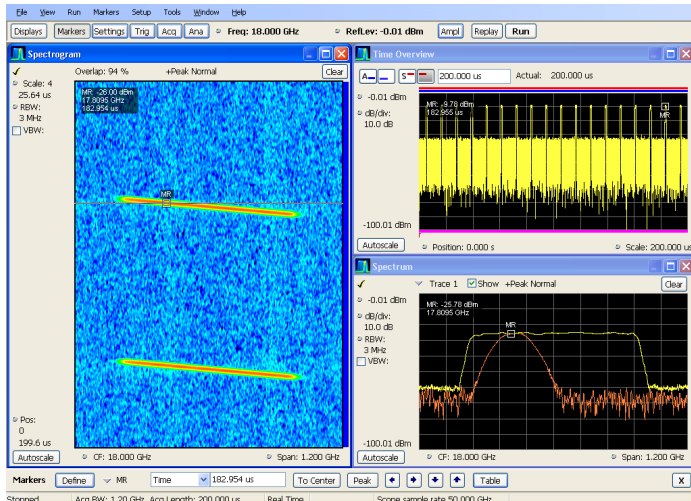
Applications

- Wideband radar and pulsed RF signals
- Frequency agile communications
- Broadband satellite and microwave backhaul links

- Wireless LAN, Bluetooth, Commercial Wireless
- Land Mobile Radio (LMR), APCO P25
- Education
- Long Term Evolution (LTE), Cellular
- EMC/EMI pre-compliance and troubleshooting

Capture with a variety of tools

Capture once - make multiple measurements without recapturing. Using oscilloscopes, up to four channels can be captured simultaneously; each of which can be independently analyzed by SignalVu-PC software. Channels can be RF, I and Q, or differential inputs. You can also apply math functions to the acquisition before analysis by SignalVu-PC. Acquisition lengths vary depending upon the selected capture bandwidth: full-bandwidth acquisitions can range from 1 ms to 25 ms depending upon model and option selections. Real-time signal analyzer captures range from up to 7.15 seconds at maximum acquisition bandwidth to several hours at reduced bandwidths.



Once captured into memory, SignalVu-PC provides detailed analysis in multiple domains. The spectrogram display (left panel) shows the frequency of an 800 MHz wide LFM pulse changing over time. By selecting the point in time in the spectrogram during the On time of the pulse, the chirp behavior can be seen as it sweeps from low to high (lower right panel).

Connect with the MDO4000B/C Series

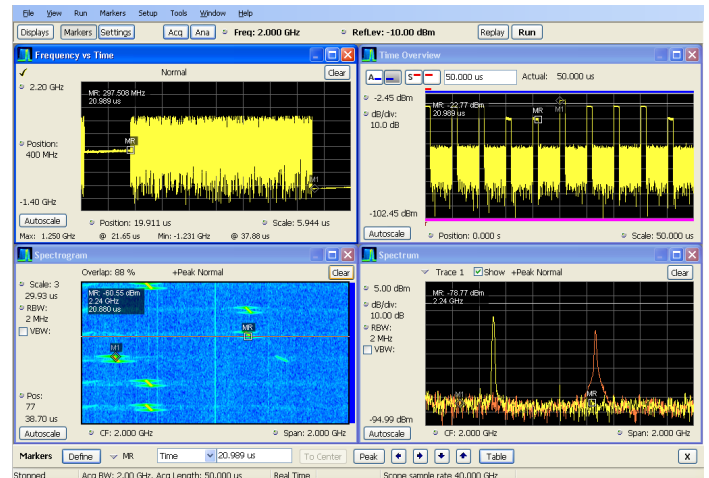
With SignalVu-PC Connect (CON-SVPC), SignalVu-PC extends the functionality of the Mixed Domain Oscilloscope MDO4000B/C Series and turns it into the industry's only 1 GHz Vector Signal Analyzer. SignalVu-PC controls the MDO4000B/C RF section, acquires the vector-calibrated I/Q data, and makes wide-band, time-correlated, multi-domain measurements. You can analyze, correlate and troubleshoot issues in time, frequency, phase, amplitude, and even modulation, since you can acquire up to 1 GHz of bandwidth in one shot. You can leverage the MDO4000B/C triggering capability and extend your debugging work into system-level troubleshooting of your embedded RF devices.

Analyze

SignalVu-PC vector signal analysis software uses the same analysis capabilities found in the RSA5000 and RSA6000 Series real-time signal analyzers.

Time-correlated measurements can be made of frequency, phase, amplitude, and modulation versus time. This is ideal for signal analysis that includes frequency hopping, pulse characteristics, modulation switching, settling time, bandwidth changes, and intermittent signals.

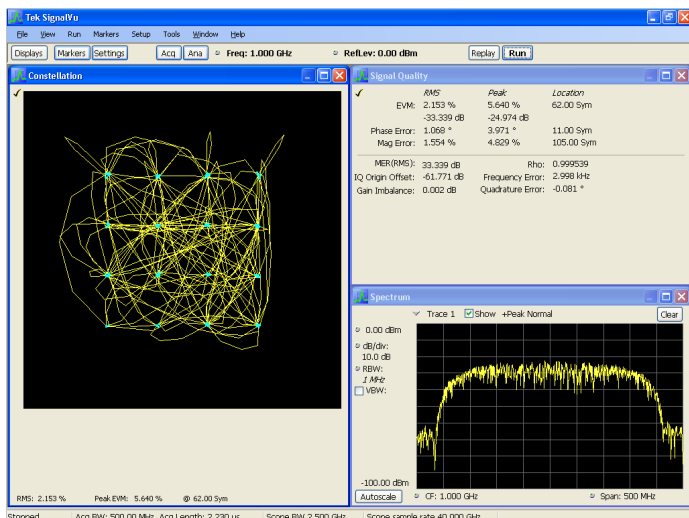
Acquisitions from the USB Spectrum Analyzers and all Tektronix MDO/MSO/DPO Series oscilloscopes, including the spectrum analyzer in the Mixed Domain Oscilloscope can be analyzed with SignalVu-PC, adding deep analysis capabilities to these broadband acquisition systems. Signals acquired with RSAs and Specmon can also be analyzed with all of the post-acquisition analysis capabilities of those instruments.



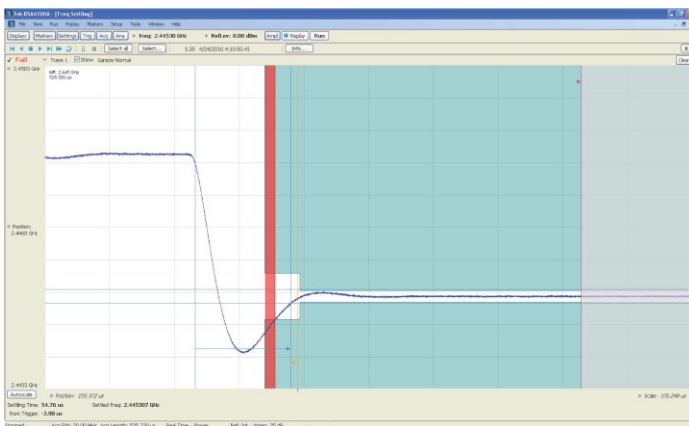
Time-correlated, multi-domain view provides a new level of insight into design or operational problems not possible with conventional analysis solutions. Here, the hop patterns of a narrowband signal can be observed using Spectrogram (lower left) and its hop characteristics can be precisely measured with Frequency vs Time display (upper left). The time and frequency responses can be observed in the two views on the right as the signal hops from one frequency to the next. All of the analysis shown above is available in the free base version of SignalVu-PC.

Optional applications tailored for your RF applications

The basic SignalVu-PC enables spectrum analysis, RF power and statistics, spectrograms, amplitude, frequency and phase vs. time, and analog modulation measurements. Applications are available for P25, Bluetooth, LTE, Mapping, Playback of recorded files, WLAN, settling time, audio, modulation, pulse, and OFDM analysis.



Wideband satellite and point-to-point microwave links can be directly observed with SignalVu-PC analysis software. Here, general purpose Digital Modulation Analysis (SVM) is demodulating a 16QAM backhaul link running at 312.5 MS/s.



Settling time measurements (SVT) are easy and automated. The user can select measurement bandwidth, tolerance bands, reference frequency (auto or manual), and establish up to 3 tolerance bands vs. time for Pass/Fail testing. Settling time may be referenced to external or internal trigger, and from the last settled frequency or phase. In the illustration, frequency settling time for a hopped oscillator is measured from an external trigger point from the device under test.

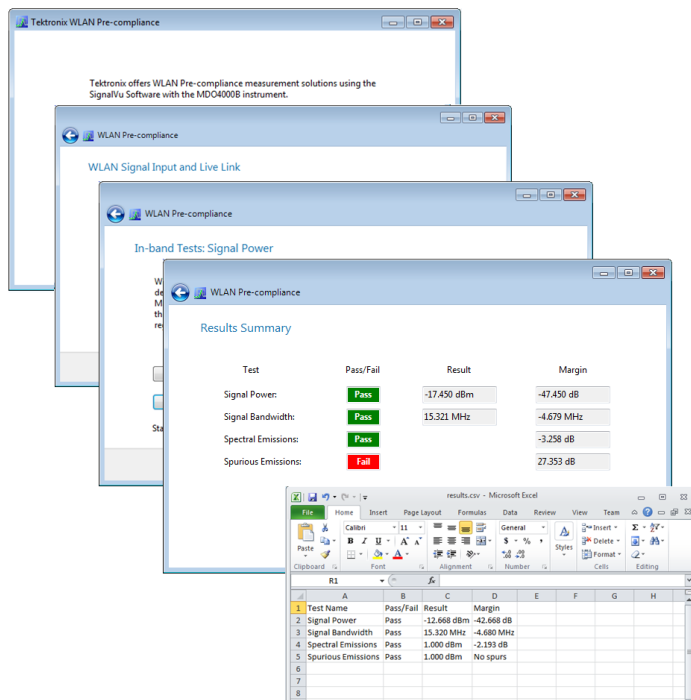
WLAN transmitter testing

With the WLAN measurement applications, you can perform standards-based transmitter measurements in the time, frequency, and modulation domains.

- SV23 supports IEEE 802.11a, b, g, j and p signals
- SV24 supports 802.11n 20 MHz and 40 MHz SISO signals
- SV25 802.11ac 20/40/80/160 MHz SISO signals
- SV2C is a bundle of Connect (CON) to MDO4000B/C Series and all the WLAN measurement applications described above (SV23, SV24 and SV25)

All modulation formats, as shown in the following table can be measured.

Standard	Std PHY	Freq band(s)	Signal	Modulation formats	Bandwidth (max)	802.11-2012 section
802.11b	DSSS HR/DSSS	2.4 GHz	DSSS/CCK 1 - 11 Mbps	DBSK, DQPSK, CCK5.5M, CCK11M	20 MHz	16 & 17
802.11g	ERP	2.4 GHz	DSSS/CCK/PBCC 1 - 33 Mbps	BPSK, DQPSK	20 MHz	17
802.11a	OFDM	5 GHz	OFDM 64 <54 Mbps	BPSK, QPSK, 16QAM, 64QAM	20 MHz	18
802.11g		2.4 GHz			20 MHz	19
802.11j/p		5 GHz			5, 10, 20 MHz	18
802.11n	HT	2.4 GHz & 5 GHz	OFDM 64, 128 ≤ 150 Mbps	BPSK, QPSK, 16QAM, 64QAM	20, 40 MHz	20
802.11ac	VHT	5 GHz	OFDM 64, 128, 256, 512 ≤ 867 Mbps	BPSK, QPSK, 16QAM, 64QAM, 256QAM	20, 40, 80, 160 MHz	22



The WLAN presets make the Error Vector Magnitude (EVM), Constellation, and Spectral Emission Mask (SEM) measurements push-button. In addition, you can download the WLAN pre-compliance wizard to easily and quickly prepare for compliance regulatory tests. The Wizard automatically measures Transmit Power, Occupied Bandwidth, Spectral Power Density, Spectral Emission Mask and Spurious Emission Mask.

The WLAN RF transmitter measurements are defined by the IEEE 802.11-2012 revision of the standard. Analysis of 1024-QAM 802.11ac signals is also possible.

IEEE 802.11 RF layer test	IEEE reference 802.11-2012	Limit tested
Transmit power	16.4.7.2 ("DSSS")	country dependent
	17.4.7.2 ("b")	country dependent
	18.3.9.2 ("a")	country dependent
	19.4.8.2 ("g")	country dependent
Transmit Power On/Off Ramp	20.3.20.3 ("n")	country dependent
	16.4.7.8 (DSSS)	(10%-90%) 2 usec
Transmit Spectrum mask	17.4.7.7 ("b")	(10%-90%) 2 usec
	16.4.7.5 (DSSS)	Std mask
	17.4.7.4 ("b")	Std mask
	18.3.9.3 ("a")	Std mask
	19.5.5 ("g")	Std mask
	20.3.20.1 ("n")	Std mask
RF Carrier suppression	22.3.18.1 ("ac")	Std mask
	16.4.7.9 ("DSSS")	-15dB
Center frequency leakage	17.4.7.8 ("b")	-15dB
	18.3.9.7.2 ("a")	-15 dBc or +2 dB w.r.t. average subcarrier power
Transmit Spectral flatness	20.3.20.7.2 ("n")	20 MHz: follow 18.3.9.7.2 40 MHz: -20 dBc or 0 dB w.r.t. average subcarrier power
	18.3.9.7.3 ("a")	+/- 4 dB (SC = -16...16), +/-6 dB (other)
	20.3.20.2 ("n")	+/- 4 dB, +/-6 dB (various BWs, 20-160 MHz)
Transmission spurious	22.3.18.2 ("ac")	+/- 4 dB, +/-6 dB (various BWs, 20-160 MHz)
Transmit Center frequency tolerance	18.3.9.4 ("a")	country dependent
	16.4.7.6 ("DSSS")	+/-25 ppm
	17.4.7.5 ("b")	+/-25 ppm
	18.3.9.5 ("a")	+/-20 ppm (20 MHz and 10 MHz), +/-10 ppm (5 MHz)
	19.4.8.3 ("g")	+/-25 ppm
Symbol clock frequency tolerance	20.3.20.4 ("n")	+/-20 ppm (5 GHz band), +/-25 ppm (2.4 GHz band)
	22.3.18.3 ("ac")	+/-20 ppm
	16.4.7.7 ("DSSS")	+/-25 ppm
	17.4.7.6 ("b")	+/-25 ppm
Transmit Modulation accuracy	18.3.9.6 ("a")	+/-20 ppm (20 MHz and 10 MHz), +/-10 ppm (5 MHz)
	19.4.8.4 ("g")	+/-25 ppm
	20.3.20.6 ("n")	+/-20 ppm (5 GHz band), +/-25 ppm (2.4 GHz band)
	22.3.18.3 ("ac")	+/-20 ppm
Transmit Modulation accuracy	16.4.7.10 ("DSSS")	Peak EVM < 0.35
	17.4.7.9 ("b")	Peak EVM < 0.36

IEEE 802.11 WLAN transmitter test summary			
IEEE 802.11 RF layer test	IEEE reference 802.11-2012	Limit tested	
Transmitter Constellation Error	18.3.9.7.4 ("a")	Modulation	Relative constellation error (dB)
		BPSK	1/2 -5
		BPSK	3/4 -8
		QPSK	1/2 -10
		QPSK	3/4 -13
		16-QAM	1/2 -16
		16-QAM	3/4 -19
	20.3.20.7.3 ("n")	64-QAM	2/3 -22
		64-QAM	3/4 -25
		64-QAM	5/6 -27
		BPSK	1/2 -5
		QPSK	1/2 -10
		QPSK	3/4 -13
	22.3.18.4.3 ("ac")	16-QAM	1/2 -16
		16-QAM	3/4 -19
		64-QAM	2/3 -22
		64-QAM	3/4 -25
		64-QAM	5/6 -27
		256-QAM	3/4 -30
		256-QAM	5/6 -32
		Out-of-band spurious emission	16.4.6.6 ("DSSS")
	17.4.6.9 ("b")	country dependent	
	18.3.8.5 ("a")	country dependent	
	19.4.4 ("g")	country dependent	

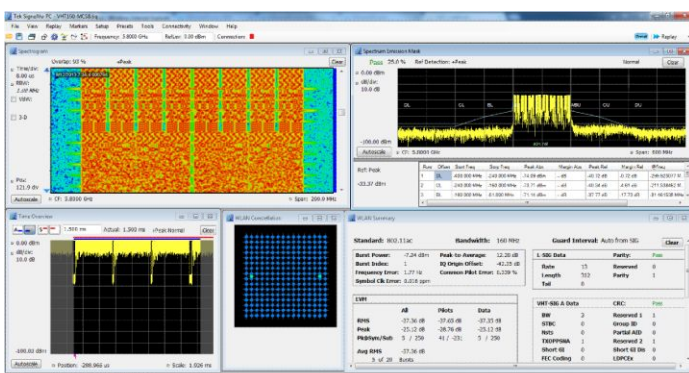
Bluetooth transmitter testing

Two options have been added to help with Bluetooth SIG standardbase transmitter RF measurements in the time, frequency and modulation domains. Option SV27 supports Basic Rate and Low Energy Transmitter measurements defined by RF.TS.4.2.0 and RF-PHY.TS. 4.2.0 Test Specification. It also demodulates and provides symbol information for Enhanced Data Rate packets. Option SV31 supports Bluetooth 5 standards (LE 1M, LE 2M, LE Coded) and measurements defined in the Core Specification. Both options also decode the physical layer data that is transmitted and color-encode the fields of packet in the Symbol Table for clear identification.

Pass/Fail results are provided with customizable limits and the Bluetooth presets make the different test set-ups push-button.

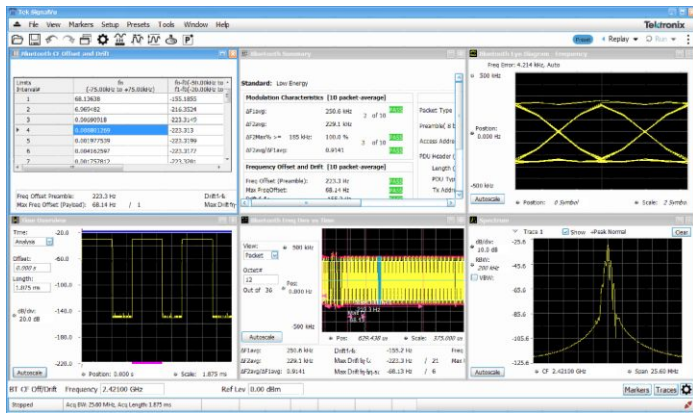
Below is a summary of the measurements that are automated with option SV27 and SV31 (unless noted):

- Bluetooth Low Energy Transmitter Measurements
 - Output power at NOC TRM-LE/CA/01/C and at EOC TRM-LE/CA/02/C
 - In-band emission at NOC TRM-LE/CA/03/C and at EOC TRM-LE/CA/04/C
 - Modulation characteristics TRM-LE/CA/05/C
 - Carrier frequency offset and drift at NOC TRM-LE/CA/06/C and at EOC TRM-LE/CA/07/C
- Basic Rate Transmitter Measurements
 - Output power TRM/CA/01/C
 - Power Density TRM/CA/02/C (no preset)
 - Power Control TRM/CA/03/C (no preset)
 - Tx output Spectrum – Frequency Range TRM/CA/04/C (no preset)
 - Tx output spectrum - 20dB Bandwidth TRM/CA/05/C
 - Tx output spectrum - Adjacent Channel Power TRM/CA/06/C
 - Modulation characteristics TRM/CA/07/C
 - Initial carrier frequency tolerance TRM/CA/08/C
 - Carrier frequency-drift TRM/CA/09/C



Easy analysis of WLAN 802.11ac transmitter with a WLAN preset that provides spectral emission mask, constellation diagram, and decoded burst information.

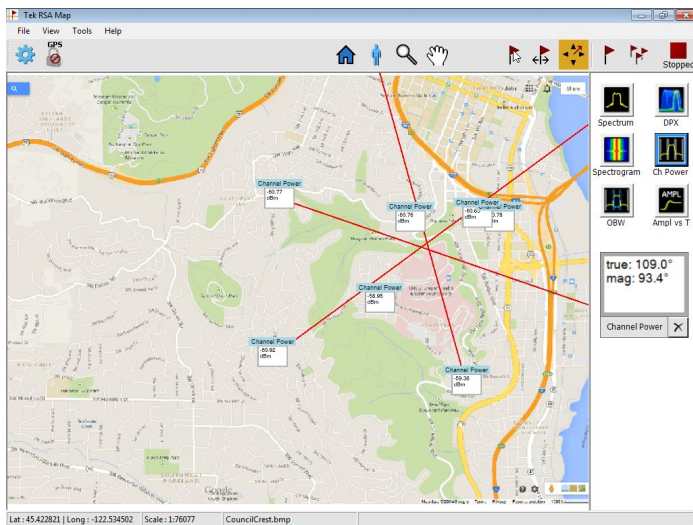
The following additional information is also available with SV27 and SV31: symbol table with color coded field information, constellation, eye diagram, frequency deviation vs time with highlighted packet and octet, frequency offset and drift detailed table as well as packet header field decoding. Markers can be used to cross-correlate the time, vector and frequency information.



Easy validation of Bluetooth transmitter with push button preset, pass/fail information and clear correlation between displays.

Mapping

The MAP application enables interference hunting and location analysis. Locate interference with an azimuth function that lets you draw a line or an arrow on a mapped measurement to indicate the direction your antenna was pointing when you took a measurement. You can also create and display measurement labels.



Mapped channel power readings using the azimuth function.

LTE FDD and TDD base station transmitter RF testing

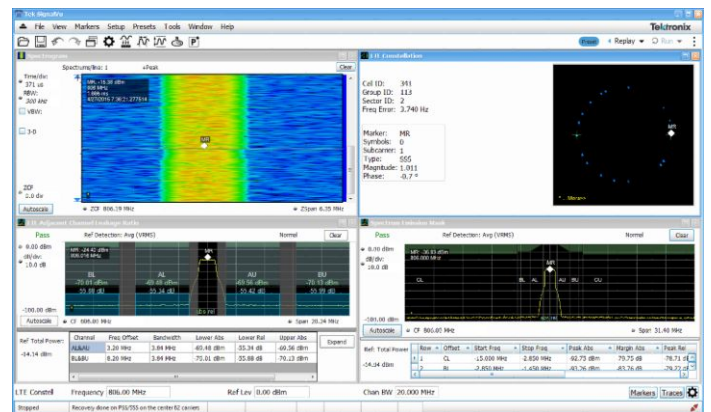
Option SV28 enables the following LTE measurements:

- Cell ID
- Channel Power
- Occupied Bandwidth
- Adjacent Channel Leakage Ratio (ACLR)
- Spectrum Emission Mask (SEM)
- Transmitter Off Power for TDD
- Reference Signal Power

There are four presets to accelerate pre-compliance testing and determine the Cell ID. These presets are defined as Cell ID, ACLR, SEM, Channel Power and TDD Toff Power. The measurements follow the definition in 3GPP TS Version 12.5 and support all base station categories, including picocells and femtocells. Pass/Fail information is reported and all channel bandwidths are supported.

The Cell ID preset displays the Primary Synchronization Signal (PSS) and the Secondary Synchronization Signal (SSS) in a Constellation diagram. It also provides Frequency Error and Reference Signal (RS) Power.

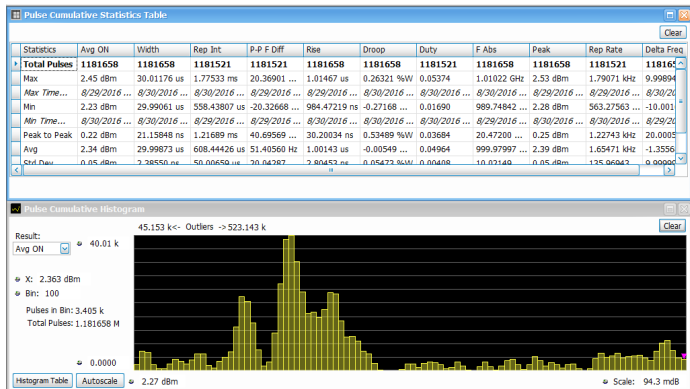
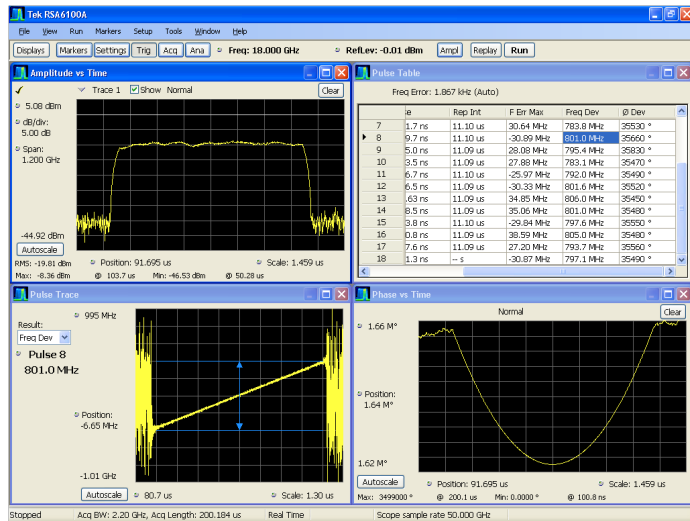
The ACLR preset measures the E-UTRA and the UTRA adjacent channels, with different chip rates for UTRA. ACLR also supports Noise Correction based on the noise measured when there is no input. Both ACLR and SEM will operate in swept mode (default) or in faster single acquisition if the instrument has enough acquisition bandwidth.



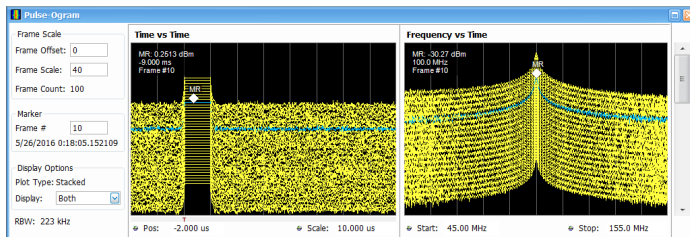
Fast validation of LTE base station transmitter with push button preset, and pass/fail information

Advanced Pulse analysis

The Advanced Pulse Analysis package (SVP) provides 31 individual measurements to automatically characterize long pulse trains. An 800 MHz wide LFM chirp centered at 18 GHz is seen here with measurements for pulses 7 through 18 (upper right). The shape of the pulse can be seen in the Amplitude vs Time plot shown in the upper left. Detailed views of pulse #8's frequency deviation and parabolic phase trajectory are shown in the lower two views.



Cumulative statistics provides timestamps for Min, Max values as well as Peak to Peak, Average and Standard deviation over multiple acquisitions, further extending the analysis. Histogram shows you outliers on the right and left.



Pulse-Ogram displays a waterfall of multiple segmented captures, with correlated amplitude vs time and spectrum of each pulse. Can be used with an external trigger to show target range and speed.

Education license

Qualified educational facilities can cost-effectively use SignalVu-PC in teaching environments. The specially priced education version includes all available analysis standard and provides results watermarked 'Education Version'.

Measurement functions

Spectrum analyzer measurements (base software)	Channel power, Adjacent channel power, Multicarrier adjacent channel Power/Leakage ratio, Occupied bandwidth, xdB down, Marker measurements of power, delta power, integrated power, power density, dBm/Hz, and dBc/Hz, Signal strength with audible feedback.
Time domain and statistical measurements (base software)	RF IQ vs time, Amplitude vs time, Power vs time, Frequency vs time, Phase vs time, CCDF, Peak-to-Average ratio, Amplitude, Frequency, and Phase modulation analysis.
WLAN 802.11a/b/g/j/p measurement application (SV23)	All of the RF transmitter measurements as defined in the IEEE standard, and a wide range of additional scalar measurements such as Carrier Frequency error, Symbol Timing error, Average/peak burst power, IQ Origin Offset, RMS/Peak EVM, and analysis displays, such as EVM and Phase/Magnitude Error vs time/frequency or vs symbols/ subcarriers, as well as packet header decoded information and symbol table.
WLAN 802.11n measurement application (SV24)	SV24 requires SV23.
WLAN 802.11ac measurement application (SV25)	SV25 requires SV24.
APCO P25 compliance testing and analysis application (SV26)	Complete set of push-button TIA-102 standard-based transmitter measurements with pass/fail results including ACPR, transmitter power and encoder attack times, transmitter throughput delay, frequency deviation, modulation fidelity, symbol rate accuracy, and transient frequency behavior, as well as HCPM transmitter logical channel peak ACPR, off slot power, power envelope, and time alignment.
Bluetooth Basic LE TX SIG measurements (SV27)	Presets for transmitter measurements defined by Bluetooth SIG for Basic Rate and Bluetooth Low Energy. Results also include Pass/Fail information. Application also provides Packet Header Field Decoding and can automatically detect the standard including Enhanced Data Rate.

Bluetooth 5 measurements (SV31)	Bluetooth SIG measurements for Bluetooth Low Energy version 5. Results also include Pass/Fail information. Application also provides Packet Header Field Decoding of LE Data Packets. SV31 requires SV27.
AM/FM/PM modulation and audio measurements (SVA)	Carrier power, frequency error, modulation frequency, modulation parameters (\pm peak, peak-peak/2, RMS), SINAD, modulation distortion, S/N, THD, TNHD, hum and noise.
Settling time (frequency and phase) (SVT)	Measured frequency, Settling time from last settled frequency, Settling time from last settled phase, Settling time from trigger. Automatic or manual reference frequency selection. User-adjustable measurement bandwidth, averaging, and smoothing. Pass/Fail mask testing with 3 user-settable zones.
Advanced Pulse analysis (SVP)	Pulse-Ogram™ waterfall display of multiple segmented captures, with amplitude vs time and spectrum of each pulse. Pulse frequency, Delta Frequency, Average on power, Peak power, Average transmitted power, Pulse width, Rise time, Fall time, Repetition interval (seconds), Repetition interval (Hz), Duty factor (%), Duty factor (ratio), Ripple (dB), Ripple (%), Droop (dB), Droop (%), Overshoot (dB), Overshoot (%), Pulse- Ref Pulse frequency difference, Pulse- Ref Pulse phase difference, Pulse- Pulse frequency difference, Pulse- Pulse phase difference, RMS frequency error, Max frequency error, RMS phase error, Max phase error, Frequency deviation, Phase deviation, Impulse response (dB), Impulse response (time), Time stamp.
Flexible OFDM analysis (SVO)	OFDM analysis with support for WLAN 802.11a/g/j and WiMAX 802.16-2004. Constellation, Scalar measurement summary, EVM or power vs carrier, Symbol table (Binary or Hexadecimal).
General purpose digital modulation analysis (SVM)	Error vector magnitude (EVM) (RMS, Peak, EVM vs Time), Modulation error ratio (MER), Magnitude Error (RMS, peak, mag error vs time), Phase error (RMS, Peak, Phase error vs time), Origin offset, Frequency error, Gain imbalance, Quadrature error, Rho, Constellation, Symbol table. FSK only: Frequency deviation, Symbol timing error.

Playback of recorded files (SV56)	Playback of files recorded with one of the USB spectrum analyzers (RSA306, RSA500, or RSA600). Controls for file selection, begin/end points. Rate controls for skip-free or live-rate playback.
LTE Downlink RF measurements (SV28)	Presets for Cell ID, ACLR, SEM, Channel Power and TDD Toff Power. Supports TDD and FDD frame format and all base stations defined by 3GPP TS version 12.5. Results include Pass/Fail information. Real-Time settings make the ACLR and the SEM measurements fast, if the connected instrument has required bandwidth.
WiGig IEEE 802.11ad (Opt. SV30)	Presets for Control PHY and Single Carrier PHY. Measures EVM in each of the packet fields per the standard, and decodes the header packet information. RF power, Received Channel Power Indicator, Frequency error, IQ DC origin offset, IQ Gain and Phase imbalance are reported in the Summary display. Pass/Fail results are reported using customizable limits.
CISPR Detectors (Quasi Peak and Average) (SVQP)	This option enables CISPR Quasi Peak and Average detectors (defined per CISPR16) in Spectrum and Spurious displays.
EMC/EMI pre-compliance and troubleshooting (EMCVU)	This option supports many predefined limit lines. It also adds a wizard for easy setup of recommended antennas, LISN, and other EMC accessories with a one-button push. When using the new EMC-EMI display, you can accelerate the test by applying the time consuming quasi peak only on failures. This display also provides a push-button ambient measurement. The Inspect tool lets you measure frequencies of interest locally, removing the need for scanning.

Specifications

Performance (typical)

The following is typical performance of SignalVu-PC analyzing acquisitions from any MSO/DPO5000, DPO7000, or DPO/DSA/MSO70000 Series oscilloscopes. Vector modulation analysis is provided for the MDO4000B spectrum analyzer acquisitions. All other MDO spectrum analysis specifications are available in the MDO4000 Series datasheet. No published performance is available for MSO/DPO2000, MDO/MSO/DPO3000, and MDO4000 Series oscilloscope acquisitions. Performance for SignalVu-PC when used with the RSA306, RSA500, or RSA600 USB real time spectrum analyzers are shown respectively in the RSA306, RSA500, and RSA600 datasheets.

Frequency-related

Frequency range	See appropriate oscilloscope data sheet
Initial center frequency setting accuracy	Equal to time-base accuracy of oscilloscope
Center frequency setting resolution	0.1 Hz
Frequency offset range	0 Hz to the maximum bandwidth of the oscilloscope
Frequency marker readout accuracy	$\pm(\text{Reference Frequency Error} \times \text{Marker Frequency} + 0.001 \times \text{Span} + 2)$ Hz
Span accuracy	$\pm 0.3\%$
Reference frequency error	Equal to oscilloscope reference frequency accuracy, aging, and drift. Refer to appropriate DPO/DSA/MSO data sheet.
Tuning Tables	<p>Tables that present frequency selection in the form of standards-based channels are available for the following.</p> <p>Cellular standards families: AMPS, NADC, NMT-450, PDC, GSM, CDMA, CDMA-2000, 1xEV-DO WCDMA, TD-SCDMA, LTE, WiMax</p> <p>Unlicensed short range: 802.11a/b/j/g/p/n/ac, Bluetooth</p> <p>Cordless phone: DECT, PHS</p> <p>Broadcast: AM, FM, ATSC, DVBT/H, NTSC</p> <p>Mobile radio, pagers, other: GMRS/FRS, iDEN, FLEX, P25, PWT, SMR, WiMax</p>

3rd order inter-modulation distortion ¹

Center frequency	MSO/DPO5000	DPO7000	DPO/DSA/MSO70000
2 GHz	-38 dBc	-40 dBc	-55 dBc
10 GHz	--	--	-48 dBc
18 GHz	--	--	-50 dBc

Residual responses ²

DPO/DSA/ MSO70000 series (all spans)	-60 dBm
DPO7000C series (all spans)	-65 dBm
MSO/DPO5000 series (all spans)	-70 dBm

¹ Conditions: Each signal level -5 dBm, reference level 0 dBm, 1 MHz tone separation. Math traces off. DPO7054/7104 and MSO/DPO5034/5054/5104 performance not listed.

² Conditions: RF input terminated, reference level 0 dBm, measurements made after specified oscilloscope warm-up and SPC calibration. Does not include zero Hz spur.

Performance (typical)

Displayed average noise level³

Span	MSO/DPO5000	DPO7000C	DPO/DSA/MSO70000
DC - 500 MHz	-94 dBm	-100 dBm	-103 dBm
>500 MHz - 3.5 GHz	-	-102 dBm	-103 dBm
>3.5 GHz - 14 GHz	-	-	-101 dBm
>14 GHz - 20 GHz	-	-	-88 dBm
>20 GHz - 25 GHz	-	-	-87 dBm
>25 GHz - 33 GHz	-	-	-85 dBm

Acquisition-related

Maximum acquisition time will vary based on the oscilloscope available memory and analog bandwidth. The following table highlights the single-channel capabilities for each model given maximum available memory configuration.

Model ⁴	Max span	Max acquisition time at max sample rate	Min RBW at max sample rate	Min IQ time resolution	Max number of FastFrames ⁵
DPO/DSA73304D	33 GHz	2.5 ms	1.2 kHz	20 ps	65,535
DPO/DSA72504D	25 GHz				
DPO/DSA/MSO72004C	20 GHz				
DPO/DSA/MSO71604C	16 GHz				
DPO/DSA/MSO71254C	12.5 GHz				
DPO/DSA/MSO70804C	8 GHz	5 ms	600 Hz	80 ps	
DPO/DSA/MSO70604C	6 GHz				
DPO/DSA/MSO70404C	4 GHz				
DPO7354C	3.5 GHz	12.5 ms	300 Hz	50 ps	
DPO7254C	2.5 GHz			100 ps	
DPO7104C	1 GHz				
DPO7054C	500 MHz				
MSO/DPO5204/B	2 GHz	25 ms	100 Hz	200 ps	
MSO/DPO5104/B	1 GHz			400 ps	
MSO/DPO5054/B	500 MHz				
MSO/DPO5034/B	350 MHz				
MDO4000B/C Spectrum Analyzer	3 GHz or 6 GHz ⁴	20 ms	111 Hz	200 ps	Not available
MSO/DPO/MDO4000/B/C	1 GHz	4 ms	557 Hz	2 ns	
MSO/DPO2000	200 MHz	1 ms	2.23 kHz	2 ns	
MSO/DPO/MDO3000	500 MHz	2 ms	1.11 kHz	800 ps	

³ Conditions: RF input terminated, 10 kHz RBW, 100 averages, reference level -10 dBm, trace detection average. Measurements made after specified oscilloscope warm-up and SPC calibration. MSO/DPO5034 and MSO/DPO5054 performance not listed.

⁴ Maximum span when used as a spectrum analyzer is the entire frequency range of the instrument.

⁵ Maximum number of frames available will depend upon the oscilloscope record length, sample rate, and the acquisition length settings.

Performance (typical)

Analysis-related

Frequency (base software) Spectrum (amplitude vs linear or log frequency)
Spectrogram (amplitude vs frequency over time)

Time and statistics (base software) Amplitude vs time
Frequency vs time
Phase vs time
Amplitude modulation vs time
Frequency modulation vs time
Phase modulation vs time
RF IQ vs time
Time overview
CCDF
Peak-to-Average ratio

Settling time, frequency, and phase (SVT) Frequency settling vs time
Phase settling vs time

Advanced Pulse measurements suite (SVP) Pulse results table
Pulse trace (selectable by pulse number)
Pulse statistics (trend of pulse results, FFT of time trend, and histogram)
Cumulative statistics
Cumulative histogram
Pulse-Ogram

Digital demod (SVM) Constellation diagram
EVM vs Time
Symbol table (binary or hexadecimal)
Magnitude and phase error vs time, and signal quality
Demodulated IQ vs time
Eye diagram
Trellis diagram
Frequency deviation vs time

Performance (typical)

Flexible OFDM (SVO)

- EVM vs Symbol, vs Subcarrier
- Subcarrier power vs symbol, vs subcarrier
- Subcarrier constellation
- Symbol data table
- Mag error vs Symbol, vs Subcarrier
- Phase error vs Symbol, vs Subcarrier
- Channel frequency response

WLAN measurements (SV23, SV24, SV25 or SV2C)

- Burst index
- Burst power
- Peak to average burst power
- IQ origin offset
- Frequency error
- Common pilot error
- Symbol clock error
- RMS and Peak EVM for Pilots/Data
- Peak EVM located per symbol and subcarrier
- Packet header format information
- Average power and RMS EVM per section of the header
- WLAN power vs Time or vs Symbol
- Burst Width
- WLAN symbol table
- WLAN Constellation
- Spectrum emission mask
- Spurious
- EVM vs symbol (or time), vs subcarrier (or frequency)
- Mag error vs symbol (or time), vs subcarrier (or frequency)
- Phase error vs symbol (or time), vs subcarrier (or frequency)
- WLAN channel frequency response vs symbol (or time), vs subcarrier (or frequency)
- WLAN spectral flatness vs symbol (or time), vs subcarrier (or frequency)

APCO P25 measurement application (SV26)

- RF output power, operating frequency accuracy, modulation emission spectrum, unwanted emissions spurious, adjacent channel power ratio, frequency deviation, modulation fidelity, frequency error, eye diagram, symbol table, symbol rate accuracy, transmitter power and encoder attack time, transmitter throughput delay, frequency deviation vs. time, power vs. time, transient frequency behavior, HCPM transmitter logical channel peak adjacent channel power ratio, HCPM transmitter logical channel off slot power, HCPM transmitter logical channel power envelope, HCPM transmitter logical channel time alignment, cross-correlated markers

Performance (typical)

Bluetooth Basic LE Tx (SV27) and Bluetooth 5 (SV31) Measurements	Peak Power, Average Power, Adjacent Channel Power or InBand Emission mask, -20dB Bandwidth, Frequency Error, Modulation Characteristics including $\Delta F1_{avg}$ (11110000), $\Delta F2_{avg}$ (10101010), $\Delta F2 > 115$ kHz, $\Delta F2/\Delta F1$ ratio, frequency deviation vs. time with packet and octet level measurement information, Carrier Frequency f_0 , Frequency Offset (Preamble and Payload), Max Frequency Offset, Frequency Drift f_1-f_0 , Max Drift Rate f_n-f_0 and f_n-f_{n-5} , Center Frequency Offset Table and Frequency Drift table, color-coded Symbol table, Packet header decoding information, eye diagram, constellation diagram, editable limits
LTE Downlink RF measurements (SV28)	Adjacent Channel Leakage Ratio (ACLR), Spectrum Emission Mask (SEM), Channel Power, Occupied Bandwidth, Power vs. Time displaying Transmitter OFF power for TDD signals and LTE constellation diagram for PSS, SSS with Cell ID, Group ID, Sector ID, Reference Signal (RS) Power, and Frequency Error.

RF and spectrum analysis performance**Resolution bandwidth**

Resolution bandwidth (spectrum analysis)	1, 2, 3, 5 sequence, auto-coupled, or user selected (arbitrary)
Resolution bandwidth shape	Approximately Gaussian, shape factor 4.1:1 (60:3 dB) $\pm 10\%$, typical
Resolution bandwidth accuracy	$\pm 1\%$ (auto-coupled RBW mode)
Alternative resolution bandwidth types	Kaiser window (RBW), -6 dB Mil, CISPR, Blackman-Harris 4B window, Uniform window (none), flat-top window (CW ampl.), Hanning window

Video bandwidth

Video bandwidth range	Dependent on oscilloscope record length setting. approximately 500 Hz to 5 MHz
RBW/VBW maximum	10,000:1
RBW/VBW minimum	1:1
Resolution	5% of entered value
Accuracy (typical)	$\pm 10\%$

Time domain bandwidth (amplitude vs. time display)

Time domain bandwidth range	At least 1/2 to 1/10,000 of acquisition bandwidth
Time domain bandwidth shape	Approximately Gaussian, shape factor 4.1:1(60:3 dB), $\pm 10\%$ typical Shape factor <2.5:1 (60:3 dB) typical for all bandwidths
Time domain bandwidth accuracy	$\pm 10\%$

Spectrum and Spurious display traces, detectors, and functions

Traces	Three traces + 1 math trace + 1 trace from spectrogram for spectrum display, four traces for spurious display
Detector	Peak, -peak, average, CISPR peak, and when option SVQP is enabled, CISPR quasi-peak and average (not available when connected to MDO4000B/C)
Trace functions	Normal, Average, Max Hold, Min Hold
Spectrum trace length	801, 2401, 4001, 8001, 10401, 16001, 32001, or 64001 points

Signal strength

Signal Strength display	
Signal strength indicator	Located at right side of display
Measurement bandwidth	Up to 40 MHz, dependent on span and RBW setting
Tone type	Variable frequency based on received signal strength

AM/FM/PM modulation and audio measurements (SVA)⁶

Analog demodulation⁷

Carrier frequency range	1 kHz or (1/2 × audio analysis bandwidth) to maximum input frequency
Maximum audio frequency span	10 MHz

Audio filters

Low pass (kHz)	0.3, 3, 15, 30, 80, 300, and user-entered up to 0.9 × audio bandwidth
High pass (Hz)	20, 50, 300, 400, and user-entered up to 0.9 × audio bandwidth
Standard	CCITT, C-Message
De-emphasis (μs)	25, 50, 75, 750, and user-entered
File	User-supplied .TXT or .CSV file of amplitude/frequency pairs. Maximum 1000 pairs.

FM modulation analysis

FM measurements,	Carrier power, carrier frequency error, audio frequency, deviation (+peak, -peak, peak-peak/2, RMS), SINAD, modulation distortion, S/N, total harmonic distortion, total non-harmonic distortion, hum and noise
FM deviation accuracy	±1.5% of deviation
FM rate accuracy	±1.0 Hz
Carrier frequency accuracy	±1 Hz + (transmitter frequency × reference frequency error)

Residuals (FM) (rate: 1 kHz to 10 kHz, deviation: 5 kHz)

THD	0.2% (MSO/DPO70000, DPO7000 Series)
	1.0% (MSO/DPO5000 Series)
	1.0% (MDO4000B Series)
SINAD	44 dB (MSO/DPO70000, DPO7000 Series)
	38 dB (MSO/DPO5000 Series)
	38 dB (MDO4000B Series)

AM modulation analysis

AM measurements	Carrier power, audio frequency, modulation depth (+peak, -peak, peak-peak/2), RMS, SINAD, modulation distortion, S/N, total harmonic distortion, total non-harmonic distortion, hum and noise
AM depth accuracy (rate: 1 kHz, depth: 50%)	±1% + 0.01 × measured value
AM rate accuracy (rate: 1 kHz, depth: 50%)	±1.0 Hz

⁶ All published performance based on conditions of Input Signal: 0 dBm, Input Frequency: 100 MHz, RBW: Auto, Averaging: Off, Filters: Off. Sampling and input parameters optimized for best results.

⁷ Sampling rates of the oscilloscope are recommended to be adjusted to no more than 10X the audio carrier frequency for modulated signals, and 10X the audio analysis bandwidth for direct input audio. This reduces the length of acquisition required for narrow-band audio analysis.

AM/FM/PM modulation and audio measurements (SVA)**Residuals (AM)**

THD	0.3% (MSO/DPO70000, MDO7000 Series) 1.0% (MSO/DPO5000 Series) 1.0% (MDO4000B Series)
SINAD	48 dB (MSO/DPO70000, MDO7000 Series) 43 dB (MSO/DPO5000 Series) 43 dB (MDO4000B Series)

PM modulation analysis

PM measurement	Carrier power, carrier frequency error, audio frequency, deviation (+peak, -peak, peak-peak/2, RMS), SINAD, modulation distortion, S/N, total harmonic distortion, total non-harmonic distortion, hum and noise
PM deviation accuracy (rate: 1 kHz, deviation: 0.628 rad)	$\pm 100\% \times (0.01 + (\text{rate} / 1 \text{ MHz}))$
PM rate accuracy (rate: 1 kHz, deviation: 0.628 rad)	$\pm 1 \text{ Hz}$

Residuals (PM)

THD	0.1% (MSO/DPO70000, MDO7000 Series) 0.5% (MSO/DPO5000 Series) 0.5% (MDO4000B Series)
SINAD	48 dB (MSO/DPO70000, MDO7000 Series) 43 dB (MSO/DPO5000 Series) 43 dB (MDO4000B Series)

Direct audio input

Audio measurements	Signal power, audio frequency (+peak, -peak, peak-peak/2, RMS), SINAD, modulation distortion, S/N, total harmonic distortion, total non-harmonic distortion, hum and noise
Direct input frequency range (for audio measurements only)	1 Hz to 10 MHz
Maximum audio frequency span	10 MHz
Audio frequency accuracy	$\pm 1 \text{ Hz}$

Residuals (PM)

THD	1.5%
SINAD	38 dB

AM/FM/PM modulation and audio measurements (SVA)

Minimum audio analysis bandwidth and RBW vs. oscilloscope memory and sample rate (SVA)

Model	Sample rate: 1 GS/s				Sample rate: maximum			
	Standard memory		Maximum memory		Standard memory		Maximum memory	
	Min. Aud. BW	RBW (Auto)	Min. Aud. BW	RBW (Auto)	Min. Aud. BW	RBW (Auto)	Min. Aud. BW	RBW (Auto)
MSO/ DPO 5034 MSO/DPO 5054	200 kHz	400 Hz	20 kHz	40 Hz	1 MHz	2 kHz	100 kHz	200 Hz
MSO/DPO 5104 MSO/DPO 5204	100 kHz	200 Hz	10 kHz	20 Hz	1 MHz	2 kHz	100 kHz	200 Hz
DPO 7000	50 kHz	100 Hz	50 kHz	100 Hz	2 MHz	4 kHz	2 MHz	4 kHz
DPO/DSA/MSO 70000 ≥12.5 GHz BW	200 kHz	400 Hz	10 kHz	20 Hz	not recommended	>4 kHz	1 MHz	2 kHz
DPO/DSA/MSO 70000 <12.5 GHz BW	200 kHz	400 Hz	20 kHz	40 Hz	not recommended	>4 kHz	500 kHz	1 kHz

Minimum audio analysis bandwidth for MDO4000B RF input

7.8 kHz

Minimum audio analysis RBW for MDO4000B RF input

≥ 15 Hz (Span set to minimum 1 kHz)

Settling time, frequency, and phase (SVT)⁸

Settled frequency uncertainty,

Measurement frequency: 1 GHz

Averages	Frequency uncertainty at stated measurement bandwidth			
	1 GHz	100 MHz	10 MHz	1 MHz
Single measurement	20 kHz	2 kHz	500 Hz	100 Hz
100 averages	10 kHz	500 Hz	200 Hz	50 Hz
1000 averages	2 kHz	200 Hz	50 Hz	10 Hz

Measurement frequency: 9 GHz

Averages	Frequency uncertainty at stated measurement bandwidth			
	1 GHz	100 MHz	10 MHz	1 MHz
Single Measurement	20 kHz	5 kHz	2 kHz	200 Hz
100 Averages	10 kHz	2 kHz	500 Hz	50 Hz
1000 Averages	2 kHz	500 Hz	200 Hz	20 Hz

⁸ Settled Frequency or Phase at the measurement frequency. Measured signal level > -20 dBm, Attenuator: Auto.

Settling time, frequency, and phase (SVT)

Settled phase uncertainty,

Measurement frequency:
1 GHz

Averages	Phase uncertainty at stated measurement bandwidth			
	1 GHz	100 MHz	10 MHz	1 MHz
Single measurement	2°	2°	2°	2°
100 averages	0.5°	0.5°	0.5°	0.5°
1000 averages	0.2°	0.2°	0.2°	0.2°

Measurement frequency:
9 GHz

Averages	Phase uncertainty at stated measurement bandwidth			
	1 GHz	100 MHz	10 MHz	1 MHz
Single measurement	5°	5°	5°	5°
100 averages	2°	2°	2°	2°
1000 averages	0.5°	0.5°	0.5°	0.5°

Advanced Pulse measurement suite (SVP)

General characteristics

Measurements

Pulse-Ogram™ waterfall display of multiple segmented captures, with amplitude vs time and spectrum of each pulse. Pulse frequency, Delta Frequency, Average on power, Peak power, Average transmitted power, Pulse width, Rise time, Fall time, Repetition interval (seconds), Repetition interval (Hz), Duty factor (%), Duty factor (ratio), Ripple (dB), Ripple (%), Droop (dB), Droop (%), Overshoot (dB), Overshoot (%), Pulse- Ref Pulse frequency difference, Pulse- Ref Pulse phase difference, Pulse-Pulse frequency difference, Pulse- Pulse phase difference, RMS frequency error, Max frequency error, RMS phase error, Max phase error, Frequency deviation, Phase deviation, Impulse response (dB), Impulse response (time), Time stamp.

System rise time (typical)

Equal to oscilloscope rise time

Minimum pulse width for
detection⁹

Model	Minimum PW
DPO/DSA72004B MSO72004	400 ps
DPO/DSA71604B MSO71604	500 ps
DPO/DSA71254B MSO71254	640 ps
DPO/DSA70804B MSO70804	1 ns
DPO/DSA70604B MSO70604	1.3 ns
DPO/DSA70404B MSO70404	2 ns
DPO7354	2.25 ns
DPO7254	3 ns
DPO7104	8 ns
DPO7054	16 ns
MSO/DPO5204	4 ns
MSO/DPO5104	8 ns
MSO/DPO5054	16 ns
MSO/DPO5034	25 ns
MDO4000B	≥5 ns

⁹ Conditions: Approximately equal to 10/(IQ sampling rate). IQ sampling rate is the final sample rate after digital down conversion from the oscilloscope. Pulse measurement filter set to max bandwidth.

Advanced Pulse measurement suite (SVP)

Pulse measurement accuracy (typical)¹⁰

Average on power	±0.3 dB + Absolute Amplitude Accuracy of oscilloscope
Average transmitted power	±0.4 dB + Absolute Amplitude Accuracy of oscilloscope
Peak power	±0.4 dB + Absolute Amplitude Accuracy of oscilloscope
Pulse width	±(3% of reading + 0.5 × sample period)
Pulse repetition rate	±(3% of reading + 0.5 × sample period)

Digital modulation analysis (SVM)

Modulation formats $\pi/2$ DBPSK, BPSK, SBPSK, QPSK, DQPSK, $\pi/4$ DQPSK, D8PSK, 8PSK, OQPSK, SOQPSK, CPM, 16/32/64/128/256QAM, MSK, GMSK, GFSK, 2-FSK, 4-FSK, 8-FSK, 16-FSK, C4FM, D16PSK, 16APSK, and 32APSK

Analysis period Up to 80,000 samples

Measurement filters Square-root raised cosine, raised cosine, Gaussian, rectangular, IS-95, IS-95 EQ, C4FM-P25, half-sine, None, User Defined

Reference filters Raised cosine, Gaussian, rectangular, IS-95, SBPSK-MIL, SOQPSK-MIL, SOQPSK-ARTM, None, User Defined

Alpha/B x T range 0.001 to 1, 0.001 step

Constellation, Error vector magnitude (EVM) vs time, Modulation error ratio (MER), Magnitude error vs time, Phase error vs time, Signal quality, Symbol table
rhoFSK only: Frequency deviation, Symbol timing error

Symbol rate range 1 kS/s to (0.4 * Sample Rate) GS/s (modulated signal must be contained entirely within the acquisition bandwidth)

Adaptive equalizer

Type	Linear, decision-directed, feed-forward (FIR) equalizer with coefficient adaptation and adjustable convergence rate
Modulation types supported	$\pi/2$ DBPSK, BPSK, SBPSK, QPSK, DQPSK, $\pi/4$ DQPSK, D8PSK, 8PSK, D16PSK, OQPSK, SOQPSK, CPM, 16/32/64/128/256QAM, MSK, 2-FSK, 4-FSK, 8-FSK, 16-FSK, C4FM
Reference filters for all modulation types except OQPSK	Raised Cosine, Rectangular, None
Reference filters for OQPSK	Raised Cosine, Half Sine
Filter length	1-128 taps
Taps/symbol: raised cosine, half sine, no filter	1, 2, 4, 8
Taps/symbol: rectangular filter	1
Equalizer controls	Off, Train, Hold, Reset

16QAM Residual EVM (typical) for DPO7000 and DPO/DSA/MSO70000 series¹¹

Symbol Rate	RF	IQ
100 MS/s	<2.0%	<2.0%
312.5 MS/s	<3.0%	<3.0%

¹⁰ Conditions: Pulse Width > 450 ns, S/N Ratio ≥30 dB, Duty Cycle 0.5 to 0.001, Temperature 18 °C to 28 °C.

¹¹ CF = 1 GHz, Measurement Filter = root raised cosine, Reference Filter = raised cosine, Analysis Length = 200 symbols.

Digital modulation analysis (SVM)

16QAM Residual EVM (typical) for MSO/DPO5000 series¹²

Symbol Rate	RF	IQ
10 MS/s	1.5%	1.0%
100 MS/s	4.0%	2.0%

OFDM residual EVM, 802.11g
Signal at 2.4 GHz, input level
optimized for best performance

DPO7000 Series	-33 dB
DPO/DSA/MSO70000 Series	-38 dB

QPSK Residual EVM (typical) for MDO4000B RF Input¹³

Single Carrier, measured at 1GHz

0.1 MSymbols/sec rate	0.26%
10 MSymbols/sec rate	0.28 %
100 MSymbols/sec rate	1.0 %
312.5 MSymbols/sec rate	3.0 %

WLAN IEEE802.11a/b/g/j/p (SV23)**General characteristics**

Modulation formats	DBPSK (DSSS1M), DQPSK (DSSS2M), CCK5.5M, CCK11M , OFDM (BPSK, QPSK, 16 or 64QAM)
Measurements and displays	Burst Index, Burst Power, Peak to Average Burst Power, IQ Origin Offset, Frequency Error, Common Pilot Error, Symbol Clock Error
	RMS and Peak EVM for Pilots/Data, Peak EVM located per Symbol and Subcarrier
	Packet Header Format Information
	Average Power and RMS EVM per section of the header
	WLAN Power vs Time, WLAN Symbol Table, WLAN Constellation
	Spectrum Emission Mask ¹⁴ , Spurious
	Error Vector Magnitude (EVM) vs Symbol (or Time), vs Subcarrier (or Frequency)
	Mag Error vs Symbol (or Time), vs Subcarrier (or Frequency)
	Phase Error vs Symbol (or Time), vs Subcarrier (or Frequency)
	WLAN Channel Frequency Response vs Symbol (or Time), vs Subcarrier (or Frequency)
	WLAN Spectral Flatness vs Symbol (or Time), vs Subcarrier (or Frequency)
Typical residual EVM - 802.11b (CCK-11Mbps) with MDO4000B¹⁵	RMS-EVM over 1000 chips, EQ On 1.04% (2.4 GHz)
Typical residual EVM - 802.11a/g/j (OFDM, 20 MHz, 64-QAM), with MDO4000B¹⁵	-44 dB (2.4 GHz) -43 dB (5.8 GHz) (RMS-EVM averaged over 20 bursts, 16 symbols each)

¹² Carrier frequency 700 MHz. MSO/DPO5054 and MSO/DPO5034 performance not listed. Use of external reference will degrade EVM performance.

¹³ Measurement filter = root raised cosine, reference filter = raised cosine, analysis Length = 400 symbols, 20 averages

¹⁴ SEM is specified with noise reduction and at least 30 averages for 802.11a/n/ac signals in 5 GHz band. Residual noise performance of the MDO4000B may exceed SEM mask at frequency above 5.85 GHz

¹⁵ Signal input power optimized for best EVM

WLAN IEEE802.11n (SV24)

General characteristics

Modulation formats	SISO, OFDM (BPSK, QPSK, 16 or 64QAM)
Measurements and displays	<p>Burst Index, Burst Power, Peak to Average Burst Power, IQ Origin Offset, Frequency Error, Common Pilot Error, Symbol Clock Error,</p> <p>RMS and Peak EVM for Pilots/Data, Peak EVM located per Symbol and Subcarrier</p> <p>Packet Header Format Information</p> <p>Average Power and RMS EVM per section of the header</p> <p>WLAN Power vs Time, WLAN Symbol Table, WLAN Constellation</p> <p>Spectrum Emission Mask ¹⁶, Spurious</p> <p>Error Vector Magnitude (EVM) vs Symbol (or Time), vs Subcarrier (or Frequency)</p> <p>Mag Error vs Symbol (or Time), vs Subcarrier (or Frequency)</p> <p>Phase Error vs Symbol (or Time), vs Subcarrier (or Frequency)</p> <p>WLAN Channel Frequency Response vs Symbol (or Time), vs Subcarrier (or Frequency)</p> <p>WLAN Spectral Flatness vs Symbol (or Time), vs Subcarrier (or Frequency)</p>
Typical residual EVM - 802.11n (40 MHz QAM) with MDO4000B ¹⁷	<p>-41 dB typical (5.8 GHz)</p> <p>-42 dB (2.4 GHz)</p> <p>(RMS-EVM averaged over 20 bursts, 16 symbols each)</p>

WLAN IEEE802.11ac (SV25)

General characteristics

Modulation formats	SISO, OFDM (BPSK, QPSK, 16/64/256/1024QAM)
Measurements and displays	<p>Burst Index, Burst Power, Peak to Average Burst Power, IQ Origin Offset, Frequency Error, Common Pilot Error, Symbol Clock Error,</p> <p>RMS and Peak EVM for Pilots/Data, Peak EVM located per Symbol and Subcarrier</p> <p>Packet Header Format Information</p> <p>Average Power and RMS EVM per section of the header</p> <p>WLAN Power vs Time, WLAN Symbol Table, WLAN Constellation</p> <p>Spectrum Emission Mask ¹⁸, Spurious</p> <p>Error Vector Magnitude (EVM) vs Symbol (or Time), vs Subcarrier (or Frequency)</p> <p>Mag Error vs Symbol (or Time), vs Subcarrier (or Frequency)</p> <p>Phase Error vs Symbol (or Time), vs Subcarrier (or Frequency)</p> <p>WLAN Channel Frequency Response vs Symbol (or Time), vs Subcarrier (or Frequency)</p> <p>WLAN Spectral Flatness vs Symbol (or Time), vs Subcarrier (or Frequency)</p>
Typical residual EVM - 802.11ac (160 MHz 256-QAM) with MDO4000B ¹⁹	-37.3 dB (5.8 GHz), RMS-EVM averaged over 20 bursts, 16 symbols each

¹⁶ SEM is specified with noise reduction and at least 30 averages for 802.11a/n/ac signals in 5 GHz band. Residual noise performance of the instrument may exceed SEM mask at frequency above 5.85 GHz

¹⁷ Signal input power optimized for best EVM

¹⁸ SEM is specified with noise reduction and at least 30 averages for 802.11a/n/ac signals in 5 GHz band. Residual noise performance of the instrument may exceed SEM mask at frequency above 5.85 GHz

¹⁹ Signal input power optimized for best EVM

APCO P25 (SV26)

Modulation formats	Phase 1 (C4FM), Phase 2 (HCPM, HDQPSK)
Measurements and displays	RF output power, operating frequency accuracy, modulation emission spectrum, unwanted emissions spurious, adjacent channel power ratio, frequency deviation, modulation fidelity, frequency error, eye diagram, symbol table, symbol rate accuracy, transmitter power and encoder attack time, transmitter throughput delay, frequency deviation vs. time, power vs. time, transient frequency behavior, HCPM transmitter logical channel peak adjacent channel power ratio, HCPM transmitter logical channel off slot power, HCPM transmitter logical channel power envelope, HCPM transmitter logical channel time alignment
Residual modulation fidelity (with MDO4000B)	
Phase 1 (C4FM)	≤1.0% typical
Phase 2 (HCPM)	≤0.5% typical
Phase 2 (HDQPSK)	≤0.5% typical
Adjacent channel power ratio	
25 kHz offset from the center and bandwidth of 6 kHz²⁰	Phase 1 (C4FM): -76 dBc typical Phase 2 (HCPM): -74 dBc typical Phase 2 (HDQPSK): -74 dBc typical
62.5 kHz offset from the center and bandwidth of 6 kHz	Phase 1 (C4FM): -77 dBc typical Phase 2 (HCPM): -78 dBc typical Phase 2 (HDQPSK): -76 dBc typical

Bluetooth (SV27 and SV31)

Modulation formats	Bluetooth® 4.2 Basic Rate, Bluetooth® 4.2 Low Energy, Bluetooth® 4.2 Enhanced Data Rate. Bluetooth® 5 when SV31 is enabled.
Measurements and displays	Peak Power, Average Power, Adjacent Channel Power or InBand Emission mask, -20 dB Bandwidth, Frequency Error, Modulation Characteristics including ΔF_{1avg} (11110000), ΔF_{2avg} (10101010), $\Delta F_2 > 115$ kHz, $\Delta F_2/\Delta F_1$ ratio, frequency deviation vs. time with packet and octet level measurement information, Carrier Frequency f_0 , Frequency Offset (Preamble and Payload), Max Frequency Offset, Frequency Drift f_1-f_0 , Max Drift Rate f_n-f_0 and f_n-f_{n-5} , Center Frequency Offset Table and Frequency Drift table, color-coded Symbol table, Packet header decoding information, eye diagram, constellation diagram
Output power (Average and Peak Power)	
Level uncertainty	Refer to instrument amplitude and flatness specification
Measurement range	Signal level > -70 dBm (for USB Spectrum Analyzers) and -60 dBm (for MDO4000B)
Modulation Characteristics (ΔF_{1avg} , ΔF_{2avg} , $\Delta F_{2avg}/\Delta F_{1avg}$, $\Delta F_{2max} \geq 115$ kHz)	
Deviation range	± 280 kHz
Deviation uncertainty (at 0 dBm)	< 2 kHz + instrument frequency uncertainty (Basic Rate) < 3 kHz + instrument frequency uncertainty (for USB spectrum analyzers and Low Energy) < 4 kHz + MDO4000B frequency uncertainty (for MDO4000B and Low Energy)

²⁰ Measured with test signal amplitude adjusted for optimum performance if necessary. Measured with Averaging, 10 waveforms.

Measurement resolution	10 Hz
Measurement range	Nominal channel frequency ± 100 kHz

Initial Carrier Frequency Tolerance (ICFT)

Measurement uncertainty (at 0 dBm)	< 1 kHz + instrument frequency uncertainty (for USB Spectrum Analyzers) < 1.5 kHz + MDO4000B frequency uncertainty (for MDO4000B)
Measurement resolution	10 Hz
Measurement range	Nominal channel frequency ± 100 kHz

Carrier Frequency Drift (Max freq. offset, drift $f_1 - f_0$, max drift $f_n - f_0$, max drift $f_n - f_{n-5}$ (50 μ s))

Measurement uncertainty	< 2 kHz + instrument frequency uncertainty (for RSA306 and MDO4000B) < 1 kHz + instrument frequency uncertainty (for RSA600 and RSA500)
Measurement resolution	10 Hz
Measurement range	Nominal channel frequency ± 100 kHz

In-band Emissions and ACP

Level uncertainty	Refer to instrument amplitude and flatness specification
-------------------	--

LTE Downlink RF measurements (SV28)

Standard Supported	3GPP TS 36.141 Version 12.5
Frame Format supported	FDD and TDD
Measurements and Displays Supported	Adjacent Channel Leakage Ratio (ACLR), Spectrum Emission Mask (SEM), Channel Power, Occupied Bandwidth, Power vs. Time showing Transmitter OFF power for TDD signals and LTE constellation diagram for PSS, SSS with Cell ID, Group ID, Sector ID, Frequency Error, and Reference Signal (RS) Power.
ACLR with E-UTRA bands (Typical Mean, with Noise Correction)	
1st Adjacent Channel	60 dB (MDO4000B); 61 dB (RSA600/RSA500); 65 dB (RSA306/B)
2nd Adjacent Channel	65 dB (MDO4000B); 63 dB (RSA600/RSA500); 66 dB (RSA306/B)

Mapping (MAP)

Mapping

Map types directly supported	Pitney Bowes MapInfo (*.mif), Bitmap (*.bmp), Open Street Maps (.osm)
Saved measurement results	Measurement data files (exported results) Map file used for the measurements Google earth KMZ file Recallable results files (trace and setup files) MapInfo-compatible MIF/MID files

WiGig 802.11ad (SV30) Measurements

WiGig 802.11ad (SV30) Measurements	RF output power, Received Channel Power Indicator (RCPI), Frequency Error, Symbol Rate Error, IQ Origin Offset, IQ Gain Imbalance, IQ Quadrature Error, EVM results for each packet region (STF, CEF, Header and Data), Packet information includes the Packet type, Preamble, Synchronization Word or Access Code, Packet Header, Payload length and CRC details.
---	--

Playback of recorded signals (SV56)

Playback file type	R3F recorded by RSA306, RSA500, or RSA600
Recorded file bandwidth	40 MHz
File playback controls	General: Play, stop, exit playback Location: Begin/end points of playback settable from 0-100% Skip: Defined skip size from 73 μ s up to 99% of file size Live rate: Plays back at 1:1 rate to recording time Loop control: Play once, or loop continuously
Memory requirement	Recording of signals requires storage with write rates of 300 MB/sec. Playback of recorded files at live rates requires storage with read rates of 300 MB/sec.

EMC pre-compliance and troubleshooting (EMCVU)**EMC pre-compliance and troubleshooting (EMCVUxx-SVPC)**

Standards	EN55011, EN55012, EN55013, EN55014, EN55015, EN55025, EN55032, EN60601, DEF STAN, FCC Part 15, FCC Part18, MIL-STD 461G
Features	EMC-EMI display, Wizard to setup accessories and limit lines, Inspect, Harmonic Markers, Level Target, Compare Traces, Measure Ambient, Report generation, Re-measure Spot
Detectors	+Peak, Avg, Avg (of logs), Avg (VRMS), CISPR QuasiPeak, CISPR Peak, CISPR Average, CISPR Average of Logs, MIL +Peak, DEF STAN Avg, DEF STAN Peak
Limit lines	Up to 3 Limit Lines with corresponding margins
Resolution BW	Set per standard or user definable
Dwell time	Set per standard or user definable
Report format	PDF, HTML, MHT,RTF, XLSX, Image File format
Accessory type	Antenna, Near Field Probe, Cable, Amplifier, Limiter, Attenuator, Filter, Other
Correction format	Gain/Loss Constant, Gain/loss table, Antenna Factor
Traces	Save/recall up to 5 traces, Math trace (trace1 minus trace2), Ambient trace

General characteristics

CON	Provides connection to the MDO4000B/C (some features such as CISPR detectors are disabled)
Update rate	< 0.2 /sec (802.11ac EVM, acq BW: 200 MHz, record length: 400 μ s)

Programmatic interface	SCPI-compliant command set. Requires installation of Tektronix Virtual Instrument Software Architecture (VISA) drivers
-------------------------------	--

System requirements

Operating systems	Windows 10 x64 Windows 8 x64 Windows 7 Service Pack 1 x64
Disk space	6 GB free on C: drive
RAM	1 GB (4 GB recommended)
	Operation with one of the USB real-time spectrum analyzers has additional requirements. See the related instrument data sheet for details.

Instruments and file types supported

Instrument family

Oscilloscopes

	File type				
	.WFM	.ISF	.TIQ	.IQT	.MAT
Performance: MSO/DPO5000 DPO7000C DPO/DSA/ MSO70000	X		X ²¹		
Mixed-domain: MDO4000 & MDO4000B/C		X	X ²²		
Bench: MSO/DPO2000 MDO/MSO/ DPO4000		X			

Real-time signal analyzers

	File type				
	.WFM	.ISF	.TIQ	.IQT	.MAT
RSA3000				X	
RSA5000/ 6000			X		X

Other

	File type				
	.WFM	.ISF	.TIQ	.IQT	.MAT
3rd party waveforms in MATLAB Level 5 format					X

SignalVu-PC vs. SignalVu

SignalVu for oscilloscopes is a separate product made to run directly on Tektronix performance oscilloscopes. SignalVu directly controls the acquisition settings of the oscilloscopes and automatically transfers data from the oscilloscope acquisition channel to the SignalVu software.

SignalVu-PC runs on a separate PC. Files from oscilloscopes and signal analyzers can be opened and analyzed. SignalVu-PC does not communicate with the acquisition instrument or control its acquisition settings.

²¹ .TIQ files can be created on performance oscilloscopes with SignalVu installed. SignalVu is a separate product from SignalVu-PC.

²² The MDO RF channel saves waveforms in the .TIQ format. MDO oscilloscope waveforms are stored in .ISF format.

Ordering information

Purchasing, licensing, and activation

SignalVu-PC and its applications are available for download at www.tektronix.com/downloads. SignalVu-PCEDU is a bundle version of SignalVu-PC that includes all analysis applications for educational institutions.

A variety of optional, licensed applications are available for purchase for SignalVu-PC. These licenses can be associated with and stored on either your PC or any RSA300 series, RSA500 series, RSA600 series, and RSA7100A spectrum analyzers. Licenses can be purchased as an option to your hardware or separately as a Node-locked or a Floating license.

Contact your local Tektronix Account Manager to purchase a license. If your purchased license is not ordered as an option to your instrument, you will receive an email with a list of the applications purchased and the URL to the Tektronix Product License Web page, where you will create an account and can then manage your licenses using the Tektronix Asset Management System (AMS): <http://www.tek.com/products/product-license>.

AMS provides an inventory of the license(s) in your account. It enables you to check out or check in a license and view the history of licenses.

Optional applications are enabled by one of the following license types.

License type	Description
Node locked license (NL) purchased as an option to your instrument	This license is initially assigned to a specific host id, which can be either a PC or an instrument. It can be reassigned to either a PC or another spectrum analyzer two times using Tek AMS. When associated with an instrument, this license is factory-installed on that instrument at the time of manufacture. It will be recognized by any PC operating with SignalVu-PC when the instrument is connected. However, the licensed application is deactivated from the PC if the licensed instrument is disconnected. This is the most common form of licensing, as it simplifies management of your applications.
Node locked license (NL) purchased separately	This license is initially assigned to a specific host id, which can be either a PC or an instrument. It can be reassigned to either a PC or instrument two times using Tek AMS. This license is delivered via email and is associated with either your PC or with an instrument when you install the license. This license should be purchased when you want your license to stay on your PC, or if you have an existing USB instrument on which you would like to install a license.
Floating license(FL) purchased separately	This license can be moved between different host ids, which can be either PCs or instruments. It can be reassigned to different PCs or instruments an unlimited number of times using Tek AMS. This license is delivered via email and is associated with either your PC or with an instrument when you install the license. This is the most flexible license and is recommended in applications where the license needs to be moved frequently.

In December 2015, the license policy and nomenclature was changed for SignalVu-PC and its options. This will be a gradual change with systems running in parallel for both ordering new capabilities and accessing trial versions of optional licenses.

The legacy system, with SignalVu-PC and its associated options, will continue to be supported in the software, so there is no need to change your current licenses. You will also be able to use the trial options present in the legacy system for several months after the transition.

The new license structure and the old options are shown below.

Legacy SignalVu-PC option	New application license	License type	Description
SVA	SVANL-SVPC	NL	AM/FM/PM/Direct Audio analysis
	SVAFL-SVPC	FL	
SVT	SVTNL-SVPC	NL	Settling Time (frequency and phase) measurements
	SVTFL-SVPC	FL	
SVM	SVMNL-SVPC	NL	General Purpose Modulation analysis to work with analyzer of acquisition bandwidth ≤40 MHz and MDO4000B/C
	SVMFL-SVPC	FL	

Legacy SignalVu-PC option	New application license	License type	Description
SVP	SVPNL-SVPC	NL	Pulse Analysis to work with analyzer of acquisition bandwidth ≤40 MHz and MDO4000B/C
	SVPFLL-SVPC	FL	
SVO	SVONL-SVPC	NL	Flexible OFD analysis
	SVOFL-SVPC	FL	
SV23	SV23NL-SVPC	NL	WLAN 802.11a/b/g/j/p measurement to work with analyzer
	SV23FL-SVPC	FL	
SV24	SV24NL-SVPC	NL	WLAN 802.11n measurement (requires SV23)
	SV24FL-SVPC	FL	
SV25	SV25NL-SVPC	NL	WLAN 802.11ac measurement to work with analyzer of acquisition bandwidth ≤40 MHz and MDO4000B/C (requires SV23 and SV24)
	SV25FL-SVPC	FL	
SV26	SV26NL-SVPC	NL	APCO P25 measurement
	SV26FL-SVPC	FL	
SV27	SV27NL-SVPC	NL	Bluetooth measurement to work with analyzer of acquisition bandwidth ≤40 MHz and MDO4000B/C
	SV27FL-SVPC	FL	
Not available in legacy license	SV31NL-SVPC	NL	Bluetooth 5 measurements per Bluetooth SIG (requires SV27)
	SV31FL-SVPC	FL	
MAP	MAPNL-SVPC	NL	Mapping
	MAPFL-SVPC	FL	
SV56	SV56NL-SVPC	NL	Playback of recorded files
	SV56FL-SVPC	FL	
SV60	SV60NL-SVPC	NL	Return loss, VSWR, cable loss, and distance to fault (requires option 04 on RSA500A/600A)
	SV60FL-SVPC	FL	
CON	CONNL-SVPC	NL	SignalVu-PC Connect to the MDO4000B/C series mixed-domain oscilloscopes
	CONFL-SVPC	FL	
SV2C	SV2CNL-SVPC	NL	WLAN 802.11a/b/g/j/p/n/ac and Connect to MDO4000B/C to work with MDO4000B/C or analyzer of acquisition bandwidth ≤40 MHz
	SV2CFL-SVPC	FL	
SV28	SV28NL-SVPC	NL	LTE Downlink RF measurement to work with analyzer of acquisition bandwidth ≤40 MHz and MDO4000B/C
	SV28FL-SVPC	FL	
Not available in legacy license	SV54NL-SVPC	NL	Signal survey and classification
	SV54FL-SVPC	FL	
Not available in legacy license	SVQPNL-SVPC	NL	EMI CISPR detectors
	SVQPFL-SVPC	FL	
Not available in legacy license	EMCVUNL-SVPC	NL	EMC pre-compliance and troubleshooting (includes EMI CISPR detectors)
	EMCVUFL-SVPC	FL	
SignalVu-PCEDU	EDUFL-SVPC	FL	Education-only version of all modules for SignalVu-PC
Not available in legacy license	SV30NL-SVPC	NL	WiGig 802.11ad measurements (only for offline analysis)
	SV30FL-SVPC	FL	

SignalVu-PC application upgrades

Owners of SignalVu-PC applications can download any bug fixes or enhancements to existing products free of charge. New applications with new measurements may become available and upgrades can be purchased to add the new functionality using the ordering information described above.

SignalVu-PC-SVE Vector Signal Analysis Software



Tektronix is registered to ISO 9001 and ISO 14001 by SRI Quality System Registrar.



Bluetooth® is a registered trademark of Bluetooth SIG, Inc.



LTE is a trademark of ETSI.

ASEAN / Australasia (65) 6356 3900
Belgium 00800 2255 4835*
Central East Europe and the Baltics +41 52 675 3777
Finland +41 52 675 3777
Hong Kong 400 820 5835
Japan 81 (3) 6714 3086
Middle East, Asia, and North Africa +41 52 675 3777
People's Republic of China 400 820 5835
Republic of Korea +822 6917 5084, 822 6917 5080
Spain 00800 2255 4835*
Taiwan 886 (2) 2656 6688

Austria 00800 2255 4835*
Brazil +55 (11) 3759 7627
Central Europe & Greece +41 52 675 3777
France 00800 2255 4835*
India 000 800 650 1835
Luxembourg +41 52 675 3777
The Netherlands 00800 2255 4835*
Poland +41 52 675 3777
Russia & CIS +7 (495) 6647564
Sweden 00800 2255 4835*
United Kingdom & Ireland 00800 2255 4835*

Balkans, Israel, South Africa and other ISE Countries +41 52 675 3777
Canada 1 800 833 9200
Denmark +45 80 88 1401
Germany 00800 2255 4835*
Italy 00800 2255 4835*
Mexico, Central/South America & Caribbean 52 (55) 56 04 50 90
Norway 800 16098
Portugal 80 08 12370
South Africa +41 52 675 3777
Switzerland 00800 2255 4835*
USA 1 800 833 9200

* European toll-free number. If not accessible, call: +41 52 675 3777

For Further Information. Tektronix maintains a comprehensive, constantly expanding collection of application notes, technical briefs and other resources to help engineers working on the cutting edge of technology. Please visit www.tek.com.

Copyright © Tektronix, Inc. All rights reserved. Tektronix products are covered by U.S. and foreign patents, issued and pending. Information in this publication supersedes that in all previously published material. Specification and price change privileges reserved. TEKTRONIX and TEK are registered trademarks of Tektronix, Inc. All other trade names referenced are the service marks, trademarks, or registered trademarks of their respective companies.



24 Jan 2018 37W-27973-12

www.tek.com

Tektronix®



X-ON Electronics

Largest Supplier of Electrical and Electronic Components

Click to view similar products for [tektronix](#) manufacturer:

Other Similar products are found below :

[TDS3BATC](#) [DCM320](#) [TDS3TRG](#) [AFG1022](#) [AFG3102C](#) [TBS1102B](#) [TCP2020](#) [TCP312A](#) [TDS2022C](#) [MDO3EMBD](#) [MDO3AFG](#)
[MDO3COMP](#) [DMM4020](#) [DPO2CONN](#) [TPP1000](#) [P2221](#) [TPA-BNC](#) [P6021A](#) [P5122](#) [TBS1202B](#) [TBS1072B](#) [A621](#) [PWS2323](#) [3724-ST](#)
[TDS3012C](#) [ENCORE](#) [AFG31051](#) [AFG31101](#) [AFG31102](#) [AFG31152](#) [P5202A](#) [PROMO](#) [P5100A](#) [PROMO](#) [AFG1062](#) [MDO3054](#)
[DPO2COMP](#) [TDS2001C](#) [TCP0020](#) [TBS1064](#) [AC2100](#) [P2220](#) [PROMO](#) [MDO3BND](#) [MDO3052](#) [THDP0200](#) [DPO2024B](#) [TBS1154](#) [EMI-](#)
[NF-PROBE](#) [P2221](#) [PROMO](#) [TPP0101](#) [DPO2BND](#) [P6316-DEMO](#) [TLP058-DEMO](#)