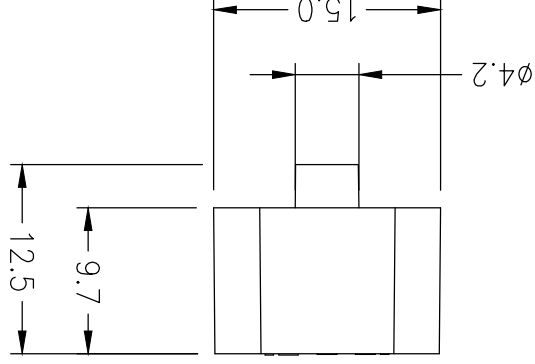
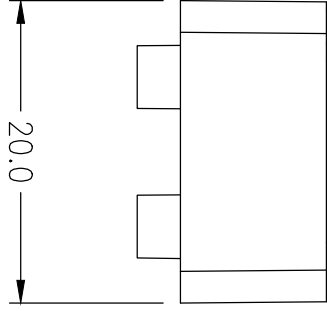
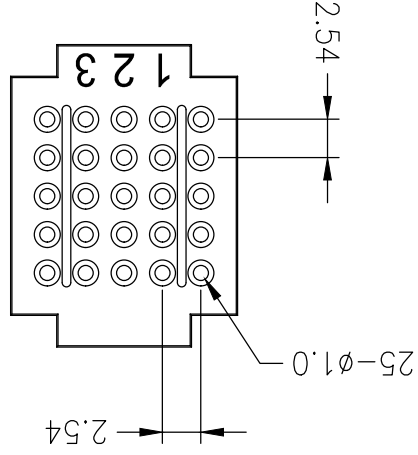



THIS DRAWING AND SPECIFICATIONS, HEREIN ARE THE CONFIDENTIAL PROPERTY OF SAMAR AND SHALL NOT BE REPRODUCED OR COPIED OR DISCLOSED IN WHOLE OR IN PART WITHOUT WRITTEN PERMISSION.	REV:	0	INITIAL RELEASE	YANG 07/07/2014	FROS 07/07/2014
	DESCRIPTION	DRAWN / DATE	APPROVED / DATE		



Board: 1.5\*2 cm  
5 Points In Line, 25 Points Totally

DIMENSIONS ARE IN mm [INCH]		21-18998		MOLD NO.	
TOLERANCES ARE FRACTIONS DECIMALS ANGLES		.XX ± 0.12 [0.005]		X ± 0.20 [0.008]	
MATERIAL		FINISH		COLOR	
					
25 POINT MINI BOARD					
P/N		21-18998		DRAWN YANG	
DATE		03/06/2014		PROJECT NO.	
SCALE		2/1		SIZE A4	
SHEET		1 OF 1		QC118	
P/N	21-19008	COLOR	BLACK		
P/N	21-19006	COLOR	YELLOW		
P/N	21-19004	COLOR	WHITE		
P/N	21-19002	COLOR	DARK GREEN		
P/N	21-19000	COLOR	LIGHT GREEN		
P/N	21-18998	COLOR	RED		
P/N	21-18996	COLOR	BLUE		
P/N		COLOR			

## **X-ON Electronics**

Largest Supplier of Electrical and Electronic Components

*Click to view similar products for [mcm manufacturer](#):*

Other Similar products are found below :

[NWTBATCAPMB13](#) [27-505](#) [27-4200](#) [27-840](#) [28-5958](#) [50-10820](#) [28-1510](#) [27-5918](#) [27-5977](#) [24-12352](#) [287-14020](#) [28-6023](#) [35SPS-3](#) [28-6008](#) [21-4605](#) [21-4575](#) [21-19084](#) [21-12825](#) [27-570](#) [28-1525](#) [83-17604](#) [27-5833](#) [27-6020](#) [24-12345](#) [28-6017](#) [28-6032](#) [21-18966](#) [30-1530](#) [28-970](#) [27-560](#) [26-120](#) [CA68B](#) [24-12344](#) [28-6005](#) [24-13075](#) [PCM-2100-50](#) [21-18956](#) [28-6080](#) [24-5360](#) [24-1040](#) [27-5917](#) [28-6031](#) [HD15MM35N-100F](#) [28-975](#) [27-4270](#) [85-11102](#) [27-5940](#) [27-5949](#) [27-6112](#) [HD15MM35N-6F](#)