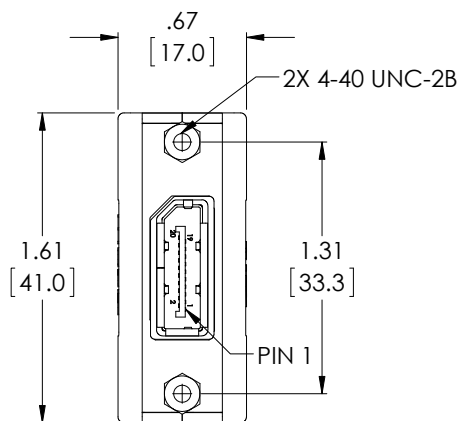
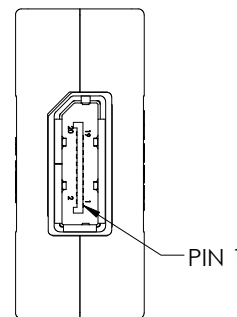
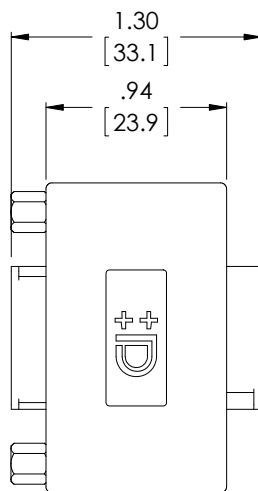


THE INFORMATION CONTAINED IN THIS DRAWING IS THE SOLE PROPERTY OF L-COM, INC. ANY REPRODUCTION IN PART OR WHOLE WITHOUT THE WRITTEN PERMISSION OF L-COM, INC. IS PROHIBITED.

| REVISIONS |  |          |              |
|-----------|--|----------|--------------|
| REV       | DESCRIPTION  | DATE     | APPROVED     |
| E         | ECN 7162: REVISED 1.37" OVERALL LENGTH TO 1.30". UPD ROHS NOTE | 11/15/13 | D. DESJARDIN |
| F         | ECN 7402: WIRING WAS STRAIGHT THROUGH. CORRECTED WIRE MAP.     | 04/23/14 | D. DESJARDIN |
|           |  |          |              |

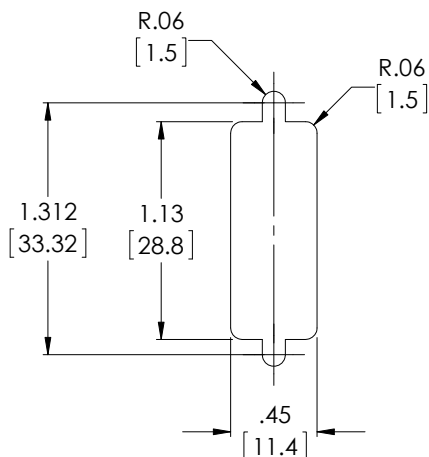


"J1"  
2X, FEMALE  
DISPLAYPORT

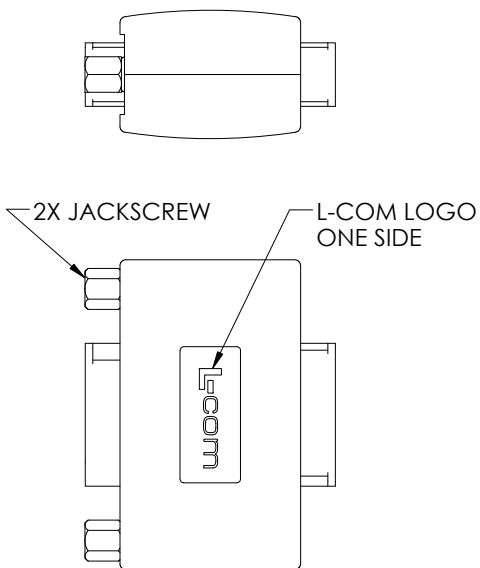


"J2"

| WIRING MAP |       |
|------------|-------|
| "J1"       | "J2"  |
| 12         | 1     |
| 11         | 2     |
| 10         | 3     |
| 9          | 4     |
| 8          | 5     |
| 7          | 6     |
| 6          | 7     |
| 5          | 8     |
| 4          | 9     |
| 3          | 10    |
| 2          | 11    |
| 1          | 12    |
| 13         | 13    |
| 14         | 14    |
| 15         | 15    |
| 16         | 16    |
| 17         | 17    |
| 18         | 18    |
| 19         | 19    |
| 20         | 20    |
| SHELL      | SHELL |



RECOMMENDED  
PANEL CUTOUT



**NOTES:**

1. COMPONENT SHALL BE TESTED FOR CONTINUITY.
2. COMPONENT SHALL BE INDIVIDUALLY PACKAGED IN ACCORDANCE WITH L-COM SPECIFICATION PS-0031.
3. ALL DIMENSIONS ARE FOR REFERENCE ONLY.

**REGULATORY COMPLIANCE:**  
CE2011/65/EU(RoHS DIRECTIVE)

|  |   |  |  |   |
|--|---|--|--|---|
| UNLESS OTHERWISE SPECIFIED,<br>DIMENSIONS ARE IN INCHES [mm]<br>OVERALL CABLE LENGTH TOLERANCE:<br>≤12 [305] = +1 [25] / -0<br>>12 [305] ≤60 [1524] = +2 [51] / -0<br>>60 [1524] ≤120 [3048] = +4 [102] / -0<br>>120 [3048] ≤300 [7620] = +6 [152] / -0<br>>300 [7620] = +5% / -0%<br>ALL OTHER DIMENSIONAL TOLERANCES:<br>.X = ±.2 [5.08]<br>.XX = ±.02 [1.51]<br>.XXX = ±.005 [1.13] | APPROVALS<br>DRAWN BY<br>D. PARHAM<br>CHECKED BY<br>D. CASTRO<br>APPROVED BY<br>P. McNEIL | DATE<br>12/22/2010<br>12/22/2010<br>12/22/2010 | 45 BEECHWOOD DRIVE<br>NORTH ANDOVER, MA<br>01845 |   |
|  | CONFIGURATION DETAILS OF<br>UNDIMENSIONED FEATURES<br>MAY VARY                            |  |  | CATEGORY<br><b>AUDIO/VIDEO</b>                        |
|  | PROJECTION<br>  | COLOR VARIATIONS<br>MAY OCCUR                  | SIZE<br><b>A</b>                                 | FSCM NO.<br><b>43321</b>                              |
|  | DWG. NO.<br><b>DP-FF</b>  |  | REV.<br><b>F</b>                                 | SCALE: NONE<br>CAD FILE: DP-FF.SLDDRW<br>SHEET 1 OF 1 |

## X-ON Electronics

Largest Supplier of Electrical and Electronic Components

*Click to view similar products for [l-com](#) manufacturer:*

Other Similar products are found below :

[FOA-550A](#) [UMC-201](#) [CSMN50MF-5](#) [CSMNB15MF-15](#) [TRD815RA2BL-5](#) [CA3A-90DA-1M](#) [CTLF3VGAMM-20](#) [HDCAMM-3](#)  
[U3A00007-05M](#) [U3A00014-03M](#) [CSMT15MF-10](#) [CSMT15MM-15](#) [CSMT15MM-25](#) [CSPL15MF-50](#) [CSPL25MF-25](#) [CSPL9MF-10](#)  
[CSPL9MF-5](#) [CSPL25MF-5](#) [CSPL25MF-2.5](#) [AL-IPEPS](#) [NB201611-10F-1](#) [TDG1026KC5-MNL](#) [NB121005-10F](#) [TRD855SRA6DBL-10M](#)  
[TRD855SRA7DBL-1M](#) [TRD855SRA7DBL-10M](#) [U2A00017-05M](#) [PR175SCDLCQ24](#) [TRG508-T4T-3M](#) [TRA5261-15F](#) [TRA5261S-1F](#)  
[TRA6261-1F](#) [USBBFT](#) [DGB25M](#) [HG2403RD-RSF](#) [CASATAL-18](#) [CSM25MM-10](#) [CSM37MF-10](#) [CSUSB-100](#) [CA3A-90RA-1M](#) [CA3A-](#)  
[90MICB-1M](#) [U2A00003-3M](#) [U3A00003-05M](#) [U2A00008-12I](#) [U3A00007-075M](#) [U3A00007-1M](#) [HGV-903U](#) [CSMT15MF-5](#)  
[CSMT15MM-50](#) [CSPL15MF-25](#)