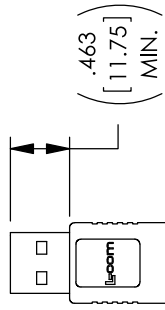
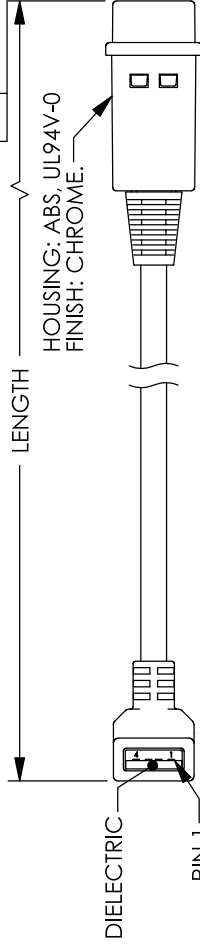
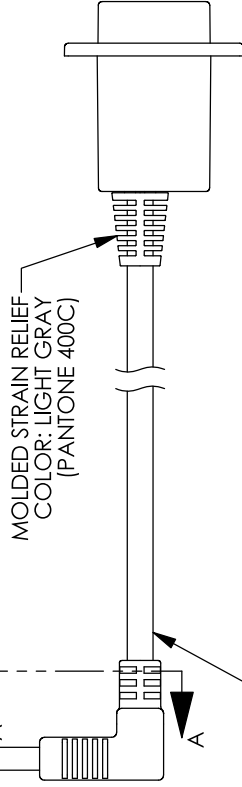


THE INFORMATION CONTAINED IN THIS DRAWING IS THE SOLE PROPERTY OF L-COM, INC. ANY REPRODUCTION IN PART OR WHOLE WITHOUT THE WRITTEN PERMISSION OF L-COM, INC. IS PROHIBITED.

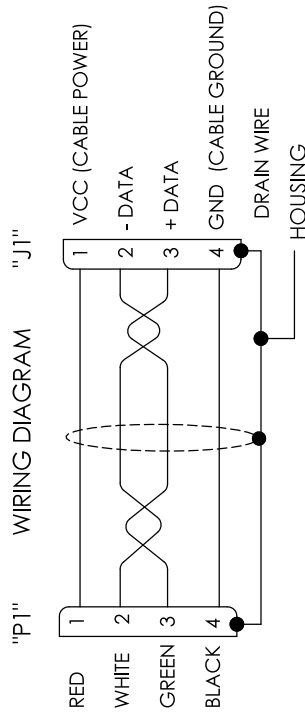
PART NUMBER	LENGTH	
	INCHES	MM
U2A00008-12I	12.0	[304.8]
U2A00008-24I	24.0	[609.6]
U2A00008-36I	36.0	[914.4]
U2A00008-72I	72.0	[1828.8]
U2A00008-120I	120.0	[3048.0]



"P1"  
USB SERIES "A" PLUG  
UP EXIT  
CONTACTS: 30 μINCHES  
GOLD PLATING



ONE 28AWG STRANDED TINNED COPPER TWISTED PAIR  
TWO 20AWG STRANDED TINNED COPPER CONDUCTORS  
OVERALL ALUMINIZED POLYESTER SHIELD WITH DRAIN WIRE  
PLUS TINNED COPPER BRAIDED SHIELD.  
PVC OUTER JACKET, LIGHT GRAY (PANTONE 400C)

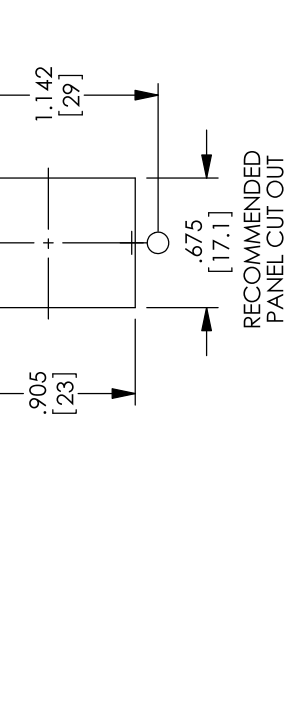
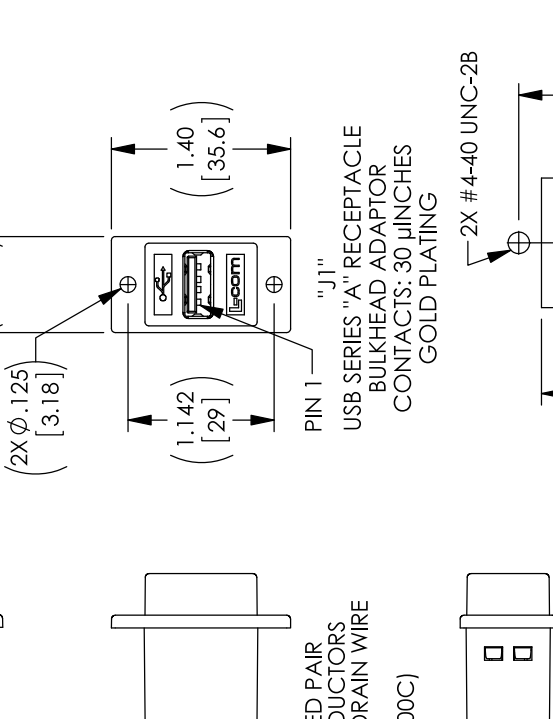
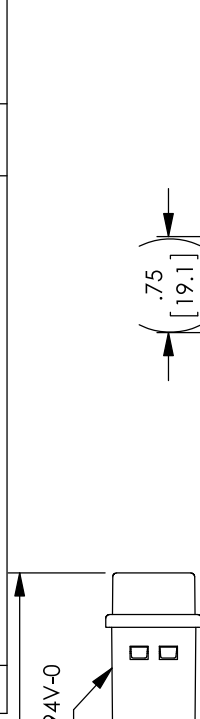


NOTES:

1. OPERATING TEMPERATURE: -10°C TO +70°C.
2. CABLE ASSEMBLY SHALL MEET USB 2.0 REQUIREMENTS.
3. CABLE ASSEMBLY SHALL BE TESTED FOR CONTINUITY.
4. CABLE ASSEMBLY SHALL BE INDIVIDUALLY PACKAGED IN ACCORDANCE WITH L-COM SPECIFICATION PS-0031.

**REGULATORY COMPLIANCE:**  
CE2011/65/EU (RoHS DIRECTIVE)

REV	DESCRIPTION	DATE	APPROVED
A	INITIAL RELEASE	06/28/17	J.LABOY



UNLESS OTHERWISE SPECIFIED,  
DIMENSIONS ARE IN INCHES [mm]

OVERALL CABLE LENGTH TOLERANCE:  
 ≤12 [305] = ±1 [25] / -0  
 >12 [305] ≤60 [1524] = +2 [5] / -0  
 >60 [1524] ≤120 [3048] = +4 [102] / -0  
 >120 [3048] ≤240 [6096] = +6 [152] / -0  
 >240 [6096] ≤300 [7620] = +5% / -3%

ALL OTHER DIMENSIONAL TOLERANCES:  
 .XX = ±.02 [51]  
 .XXX = ±0.05 [1.27]

PROJECTION

APPROVALS

DATE

50 HIGH STREET  
NORTH ANDOVER, MA  
01845

Global  
Connectivity

CATEGORY

USB

PRODUCT DESCRIPTION

USB2.0 A-F PNL MNT/90UP A-M SHLD

SIZE

FCM NO.

43321

DWG. NO.

U2A00008

SCALE: NONE

CAD FILE: U2A00008.SLDDRW

REVISIONS

REV.

A

SHEET 1 OF 1

## X-ON Electronics

Largest Supplier of Electrical and Electronic Components

*Click to view similar products for [l-com](#) manufacturer:*

Other Similar products are found below :

[FOA-550A](#) [UMC-201](#) [CSMN50MF-5](#) [CSMNB15MF-15](#) [TRD815RA2BL-5](#) [CA3A-90DA-1M](#) [CTLF3VGAMM-20](#) [HDCAMM-3](#)  
[U3A00007-05M](#) [U3A00014-03M](#) [CSMT15MF-10](#) [CSMT15MM-15](#) [CSMT15MM-25](#) [CSPL15MF-50](#) [CSPL25MF-25](#) [CSPL9MF-10](#)  
[CSPL9MF-5](#) [CSPL25MF-5](#) [CSPL25MF-2.5](#) [AL-IPEPS](#) [NB201611-10F-1](#) [TDG1026KC5-MNL](#) [NB121005-10F](#) [TRD855SRA6DBL-10M](#)  
[TRD855SRA7DBL-1M](#) [TRD855SRA7DBL-10M](#) [U2A00017-05M](#) [PR175SCDLCQ24](#) [TRG508-T4T-3M](#) [TRA5261-15F](#) [TRA5261S-1F](#)  
[TRA6261-1F](#) [USBBFT](#) [DGB25M](#) [HG2403RD-RSF](#) [CASATAL-18](#) [CSM25MM-10](#) [CSM37MF-10](#) [CSUSB-100](#) [CA3A-90RA-1M](#) [CA3A-](#)  
[90RMICB-1M](#) [U2A00003-3M](#) [U3A00003-05M](#) [U2A00008-12I](#) [U3A00007-075M](#) [U3A00007-1M](#) [HGV-903U](#) [CSMT15MF-5](#)  
[CSMT15MM-50](#) [CSPL15MF-25](#)