

86 06 250

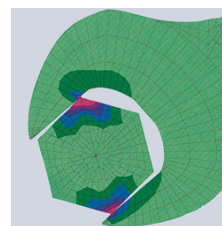
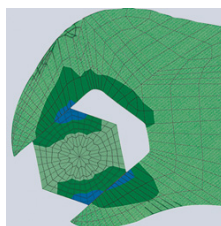
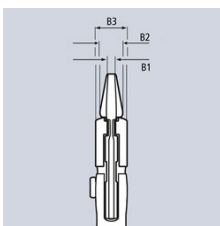
Pliers Wrench pliers and a wrench in a single tool



- Replaces the need for sets of metric and imperial spanners
- Smooth jaws for damage free installation of plated fittings - working directly on chrome!
- Adjustable tightening tool
- Also excellent for gripping, holding, pressing and bending workpieces
- Push the button for adjustment on the workpiece
- Zero backlash jaw pressure prevents damage to edges of sensitive components
- Parallel jaws give a more solid grip; its design allows flexible adjustment of all widths up to the specified maximum size
- Reliable catching of the hinge bolt: no unintentional shifting
- The ratchet type principle allows quick and easy tightening and release of all bolted connections
- Lever transmission greater than 10 : 1 for strong gripping power
- Chrome vanadium electric steel, forged, oil-hardened
- With scaling for presetting the width apart from the workpiece

The smooth jaws grip all parallel surfaces in the capacity range with a high degree of pressure if necessary and open up almost unlimited application possibilities for the pliers wrench: e.g. for tightening locknuts, exerting pressure to activate the adhesive power of contact adhesives, edge breaking in tile work, snapping cable ties, utilisation as a small vice.

Article No.	86 06 250
EAN	4003773082408
Pliers	chrome plated
Handles	insulated with multi-component grips, VDE-tested
Insulation standard	IEC 60900 DIN EN 60900
B2 mm	8,0
B3 mm	14,0
B1 mm	8,0
Adjustment positions	19
Capacities for nuts Inch	2
Capacities for nuts mm	52
Length mm	250
Net weight g	515

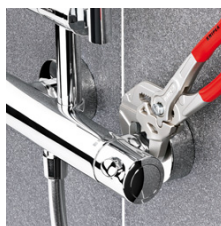


Pliers wrench: zero backlash contact pressure, no damage to edges

Conventional open end wrench: edge pressure causes surface damage



Fast adjustment at the touch of a button



Working on plated fittings without damage of the surface



replaces the need for sets of metric and imperial spanners

technical change and errors excepted



Ideal for bending operations

X-ON Electronics

Largest Supplier of Electrical and Electronic Components

Click to view similar products for [knipex manufacturer](#):

Other Similar products are found below :

[00 21 41 LE](#) [70 01 160](#) [7006140](#) [70 07 160](#) [7902125](#) [86 03 400](#) [88 06 250](#) [92 22 13](#) [97 43 05](#) [97 49 08](#) [97 49 15](#) [98 03 09](#) [12 42 195](#) [97 50](#)
[01](#) [97 52 35](#) [98 03 11](#) [30 11 140](#) [34 12 130](#) [48 11 J1](#) [0301160](#) [09 02 240](#) [11 17 160](#) [64 62 120](#) [87 03 250](#) [00 20 16 P ESD](#) [00 21 35 LE](#) [02](#)
[02 225](#) [97 91 01](#) [97 54 26](#) [97 49 24](#) [48 21 J21](#) [41 04 250](#) [49 11 A4](#) [49 21 A41](#) [95 32 320](#) [95 32 315 A](#) [02 06 200](#) [92 27 62](#) [88 02 250](#) [79 52](#)
[125](#) [79 42 125 ESD](#) [98 67 05](#) [97 78 180](#) [95 36 315 A](#) [1301160](#) [12 80 040 SB](#) [77 32 120 H ESD](#) [78 91 125](#) [79 12 125](#) [81 11 250](#)