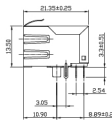


## Industrial Ethernet IE-PCB-RJ45-T-C5AMT

**Weidmüller Interface GmbH & Co. KG**  
 Klingenbergstraße 16  
 D-32758 Detmold  
 Germany  
 Fon: +49 5231 1429-0  
 Fax: +49 5231 14292083  
 www.weidmueller.com



IE plug-in connectors, IP20, for copper and fibre optic cables

### General ordering data

Type	IE-PCB-RJ45-T-C5AMT
Order No.	<a href="#">2474160000</a>
Version	RJ45 PCB socket, 90°, THT solder connection, IP20
GTIN (EAN)	4050118485943
Qty.	60 pc(s).
Packaging	Tray; Rs = 10 <sup>9</sup> - 10 <sup>12</sup> Ω

**Data sheet**

**Industrial Ethernet  
IE-PCB-RJ45-T-C5AMT**

**Weidmüller Interface GmbH & Co. KG**  
Klingenbergstraße 16  
D-32758 Detmold  
Germany  
Fon: +49 5231 1429-0  
Fax: +49 5231 14292083  
www.weidmueller.com

**Technical data**

**Dimensions and weights**

Net weight 6.483 g

**Temperatures**

Operating temperature -40 °C...85 °C      Storage temperature  
Installation temperature

**Electrical properties**

Contact resistance	≤ 20 mΩ	Dielectric strength, contact / contact	≥ 1000 V DC
Insulation resistance	> 500 MΩ	Rated current	1.5 A
Rated voltage	125 V AC		

**Material data**

Insulating material	PA 66	Insulating material group	II
CTI	≥ 500	UL 94 flammability rating	V-0
Contact material	Phosphorus bronze	Contact surface	Selective gold 30 μ"
Shielding material	Copper alloy	Shield surface	nickel-plated

**Standards**

Connector standard IEC 60603-7-51

**System parameters**

Wiring	8-core	Outgoing elbow	90°
Number of solder pins per pole	1	Mounting onto the PCB	THT solder connection
Solder eyelet hole diameter (D)	0.9 mm	Solder eyelet hole diameter tolerance (D)	± 0.1 mm
Solder pin length (l)	3.2 mm	Pitch in inches (P)	0.05 inch
Pitch in mm (P)	1.27 mm	Insulation resistance	> 500 MΩ
No. of poles	8	Packaging	Tray; Rs = 10 <sup>9</sup> - 10 <sup>12</sup> Ω
Plugging cycles	750	Protection degree	IP20
Shielding	Yes		

**Classifications**

ETIM 6.0	EC001121	eClass 6.2	27-25-05-04
eClass 9.1	27-44-09-90		

**Approvals**

Approvals



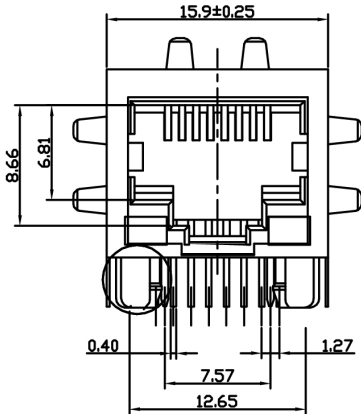
ROHS Conform

**Industrial Ethernet  
IE-PCB-RJ45-T-C5AMT**

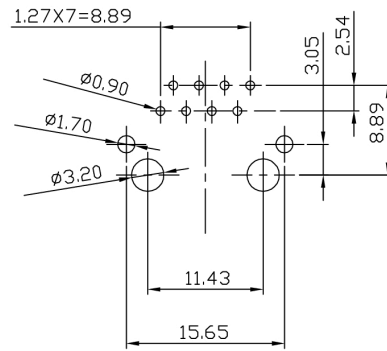
**Weidmüller Interface GmbH & Co. KG**  
 Klingenbergstraße 16  
 D-32758 Detmold  
 Germany  
 Fon: +49 5231 1429-0  
 Fax: +49 5231 14292083  
 www.weidmueller.com

**Drawings**

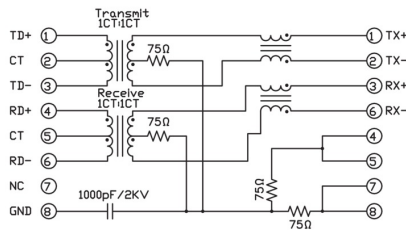
**Dimensioned drawing**



**PCB design**



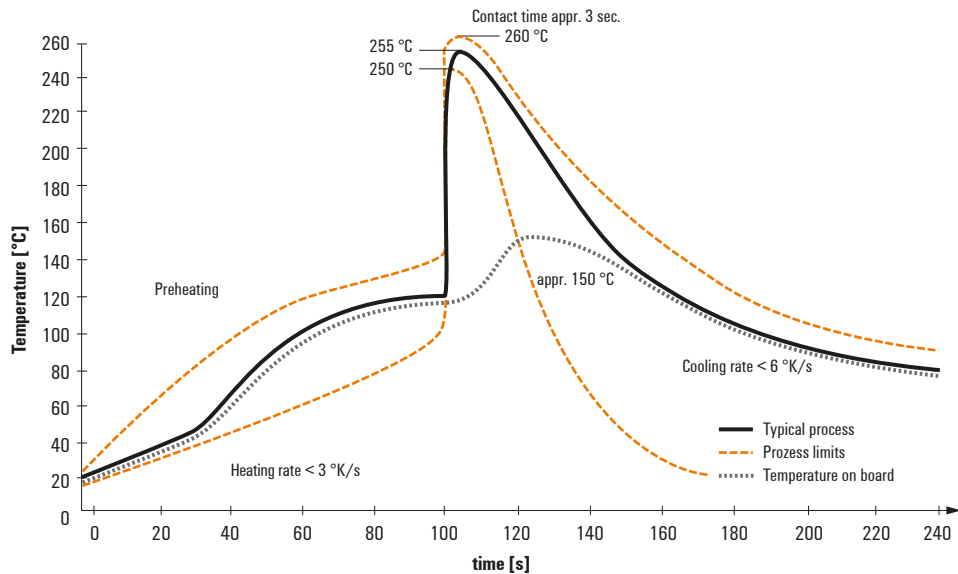
**Circuit diagram**



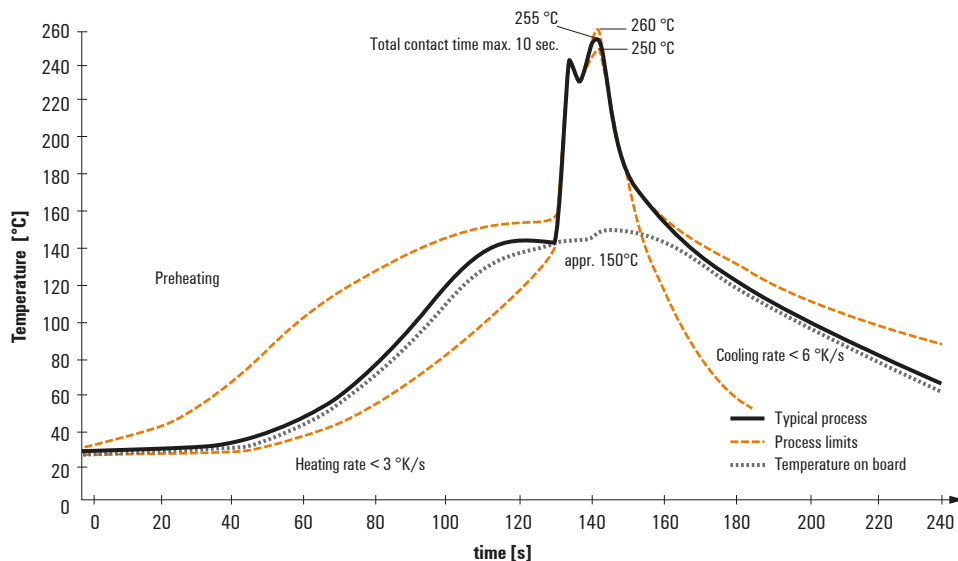
## Recommended wave soldering profiles

**Weidmüller Interface GmbH & Co. KG**  
 Klingenbergstraße 16  
 D-32758 Detmold  
 Germany  
 Fon: +49 5231 14-0  
 Fax: +49 5231 14-292083  
 www.weidmueller.com

### Single Wave:



### Double Wave:



### Wave soldering profiles

Wired connection elements should be processed in accordance with the DIN EN 61760-1 standard. We have included two recommendations for practical wave soldering profiles, with which Weidmüller PCB terminals and connectors are qualified.

When choosing a suitable profile for your application, the following factors also need to be considered:

- PCB thickness
- Proportion of Cu in the layers
- Single/double-sided assembly
- Product range
- Heating and cooling rates

The single and double wave profiles each indicate the recommended operating range, including the maximum soldering temperature of 260°C. In practice, the maximum soldering temperature is quite often well below the above maximum profile.

## X-ON Electronics

Largest Supplier of Electrical and Electronic Components

*Click to view similar products for [weidmuller](#) manufacturer:*

Other Similar products are found below :

[8924550000](#) [56956](#) [0133660000](#) [6720000227](#) [6720005111](#) [68676](#) [69718](#) [EXO24CH](#) [7760056348](#) [7940000218](#) [8005181001](#) [8008180000](#)  
[8432240000](#) [8463580000](#) [8545830000](#) [8689870000](#) [8705640000](#) [9001080000](#) [9003720000](#) [9004250000](#) [9004780000](#) [9013260000](#)  
[9014100000](#) [9019040000](#) [9026010000](#) [9028630000](#) [903708](#) [9037350000](#) [9046290000](#) [9129643500](#) [913155](#) [9159530000](#) [919656](#) [919764](#)  
[9202230000](#) [9202850000](#) [9456750000](#) [9457913000](#) [980811](#) [980826](#) [9912800003](#) [9916080000](#) [9916280012](#) [9918380000](#) [9919371205](#)  
[9919371224](#) [9925710000](#) [9927480024](#) [1166660000](#) [11751](#)