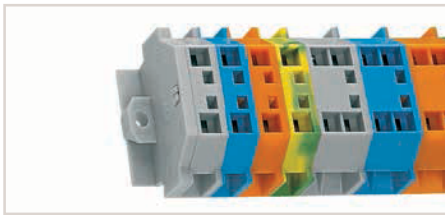
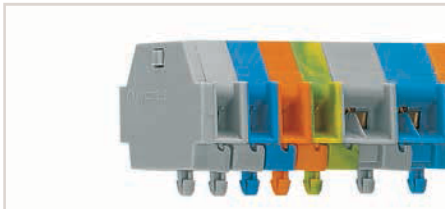


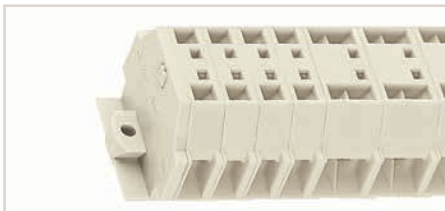
## Modular Terminal Blocks with Mounting Flange or Snap-In Mounting Foot 4 mm<sup>2</sup>, 262 Series



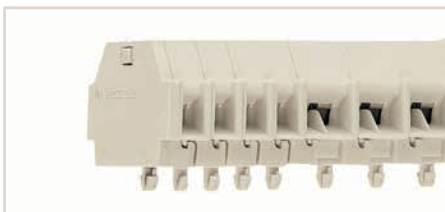
Terminal strip, with mounting flanges, for screw or similar mounting types, 3.2 mm mounting hole diameter (with 209-123 Mounting Foot for DIN-35 rail)



Terminal strip with snap-in mounting feet, for 0.6 ... 1.2 mm plate thickness, 3.5 mm mounting hole diameter (also for 210-154 Aluminum Rail or with 209-120 Mounting Foot for DIN-35 rail)



Terminal strip, with mounting flanges, for screw or similar mounting types, 3.2 mm mounting hole diameter (with 209-123 Mounting Foot for DIN-35 rail)



Terminal strip with snap-in mounting feet, for 0.6 ... 1.2 mm plate thickness, 3.5 mm mounting hole diameter (also for 210-154 Aluminum Rail or with 209-120 Mounting Foot for DIN-35 rail)

Terminal blocks with a blue insulated housing are suitable for Ex i applications.

Using crimped ferrules for corrosion protection, the rated cross-section is reduced by one size.

For conductor types and conductor preparation, see Section 14 "Electrical Equipment for Hazardous Environments."



2-conductor terminal block, with mounting flange, for screw or similar mounting types, 3.2 mm mounting hole diameter, with mounting foot (209-123) also for DIN-35 rail

Color	Item No.	Pack. Unit
gray	262-301	100 (50)
blue	262-304	100 (50)
orange	262-306	100 (50)
green-yellow	262-307	100 (50)

2-conductor terminal block, with snap-in mounting foot, for 0.6 ... 1.2 mm plate thickness, 3.5 mm mounting hole diameter, also for aluminum rail (210-154) or with mounting foot (209-120) for DIN-35 rail

Color	Item No.	Pack. Unit
gray	262-311	100 (50)
blue	262-314	100 (50)
orange	262-316	100 (50)
green-yellow	262-317	100 (50)

Space-saving, 2-conductor end terminal block, without protruding snap-in mounting foot, for terminal strips with snap-in mounting feet

Color	Item No.	Pack. Unit
gray	262-321	100 (50)
blue	262-324	100 (50)
orange	262-326	100 (50)
green-yellow	262-327	100 (50)



Rated voltage (III / 3)	630 V
Rated surge voltage (III / 3)	8 kV
Rated current	24 A
Rated voltage EN (Ex e II)	
Approval	300 V, 20 A ; 300 V, 20 A
Connection Data	
Solid conductor	0.08 ... 4 mm / 28 ... 12 AWG
Fine-stranded conductor	0.08 ... 4 mm / 28 ... 12 AWG
Strip length	9 ... 10 mm / 0.35 ... 0.39 inch
Terminal block width	7 mm / 0.276 inch
Insulation material	Polyamide 66 (PA 66)

### Technical Data

Rated voltage (III / 3)	630 V
Rated surge voltage (III / 3)	8 kV
Rated current	24 A
Rated voltage EN (Ex e II)	
Approval	300 V, 20 A ; 300 V, 20 A
Connection Data	
Solid conductor	0.08 ... 4 mm / 28 ... 12 AWG
Fine-stranded conductor	0.08 ... 4 mm / 28 ... 12 AWG
Strip length	9 ... 10 mm / 0.35 ... 0.39 inch
Terminal block width	7 mm / 0.276 inch
Insulation material	Polyamide 66 (PA 66)

### Accessories (Selection)

Comb-style jumper bar, insulated, reduces maximum conductor size to 2.5 mm <sup>2</sup> , I <sub>N</sub> 16 A, gray	
End plate, with mounting flange	
End plate, with snap-in mounting foot	
Test plug module, snaps together Module width 7 mm	
Test plug module, snaps together Module width 12 mm	

	Item No.	Page
2-pole	262-402	624
gray	262-361	624
gray	262-371	624
gray	249-137	624

Dimensional drawing, see page 601

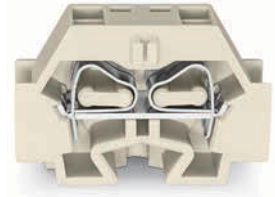
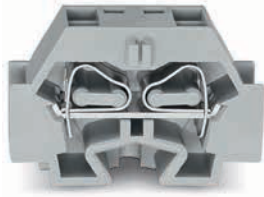
Accessories (jumpers, end plates, test plugs, etc.), see page 624

Tools, see Section 13

Marking accessories, see Section 13 and Volume 6

Information on hazardous locations, see Section 14

Approvals and corresponding ratings, visit [www.wago.com](http://www.wago.com)



4-conductor terminal block, with mounting flange, for screw or similar mounting types, 3.2 mm mounting hole diameter, with mounting foot (209-123) also for DIN-35 rail

Color	Item No.	Pack. Unit
gray	262-331	100 (50)
blue	262-334	100 (50)
orange	262-336	100 (50)
green-yellow	262-337	100 (50)

2-conductor Ex e II terminal block, with mounting flange, for screw or similar mounting types, 3.2 mm mounting hole diameter, with mounting foot (209-123) also for DIN-35 rail

Color	Item No.	Pack. Unit
light gray	262-130	100 (50)

4-conductor Ex e II terminal block, with mounting flange, for screw or similar mounting types, 3.2 mm mounting hole diameter, with mounting foot (209-123) also for DIN-35 rail

Color	Item No.	Pack. Unit
light gray	262-230	100 (50)

4-conductor terminal block, with snap-in mounting foot, for 0.6 ... 1.2 mm plate thickness, 3.5 mm mounting hole diameter, also for aluminum rail (210-154) or with mounting foot (209-120) for DIN-35 rail

Color	Item No.	Pack. Unit
gray	262-341	100 (50)
blue	262-344	100 (50)
orange	262-346	100 (50)
green-yellow	262-347	100 (50)

2-conductor Ex e II terminal block, with snap-in mounting foot, for 0.6 ... 1.2 mm plate thickness, 3.5 mm mounting hole diameter, also for aluminum rail (210-154) or with mounting foot (209-120) for DIN-35 rail

Color	Item No.	Pack. Unit
light gray	262-180	100 (50)

4-conductor Ex e II terminal block, with snap-in mounting foot, for 0.6 ... 1.2 mm plate thickness, 3.5 mm mounting hole diameter, also for aluminum rail (210-154) or with mounting foot (209-120) for DIN-35 rail

Color	Item No.	Pack. Unit
light gray	262-280	100 (50)

Space-saving, 2-conductor end terminal block, without protruding snap-in mounting foot, for terminal strips with snap-in mounting feet

Color	Item No.	Pack. Unit
gray	262-351	100 (50)
blue	262-354	100 (50)
orange	262-356	100 (50)
green-yellow	262-357	100 (50)

Space-saving, 2-conductor Ex e II end terminal block, without protruding snap-in mounting foot, for terminal strips with snap-in mounting feet

Color	Item No.	Pack. Unit
light gray	262-181	100 (50)

Space-saving, 4-conductor Ex e II end terminal block, without protruding snap-in mounting foot, for terminal strips with snap-in mounting feet

Color	Item No.	Pack. Unit
light gray	262-281	100 (50)



630 V

8 kV

32 A

300 V, 20 A **UL**; 300 V, 20 A **C**

0.08 ... 4 mm / 28 ... 12 AWG

0.08 ... 4 mm / 28 ... 12 AWG

9 ... 10 mm / 0.35 ... 0.39 inch

12 mm / 0.472 inch

Polyamide 66 (PA 66)



23 A

550 V

300 V, 20 A **UL**; 300 V, 20 A **C**

0.5 ... 4 mm / 20 ... 12 AWG

0.5 ... 4 mm / 20 ... 12 AWG

9 ... 10 mm / 0.35 ... 0.39 inch

7 mm / 0.276 inch

Polyamide 66 (PA 66)



30 A

550 V

300 V, 20 A **UL**; 300 V, 20 A **C**

0.5 ... 4 mm / 20 ... 12 AWG

0.5 ... 4 mm / 20 ... 12 AWG

9 ... 10 mm / 0.35 ... 0.39 inch

12 mm / 0.472 inch

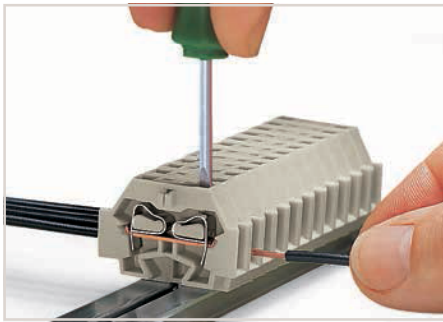
Polyamide 66 (PA 66)

	Item No.	Page
2-pole	262-402	624
gray	262-361	624
gray	262-371	624
gray	249-140	624

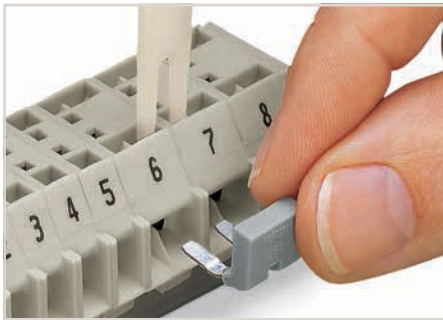
	Item No.	Page
2-pole	262-402	624
light gray	262-363	624
light gray	262-373	624

	Item No.	Page
2-pole	262-402	624
light gray	262-363	624
light gray	262-373	624

## Terminal Strips with Mounting Flanges or Snap-in Mounting Feet 4 mm<sup>2</sup>, 262 Series



**CAGE CLAMP® connection**  
Inserting a conductor via screwdriver.



Commoning with comb-style jumper bar.

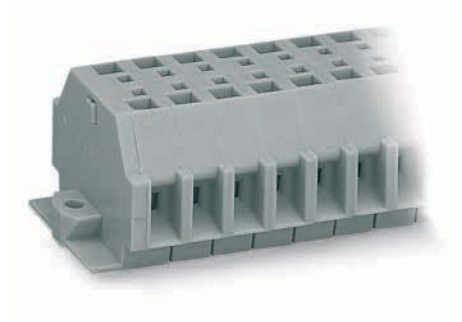
Terminal strips with a blue insulated housing are suitable for Ex i applications.

Item no. suffixes for gray terminal strips in:  
blue .../000-006

Longer strips and/or mixed-color assemblies are available upon request.

Using crimped ferrules for corrosion protection, the rated cross-section is reduced by one size.

For conductor types and conductor preparation, see Section 14 "Electrical Equipment for Hazardous Environments."



2-conductor terminal strip, with mounting flanges, for screw or similar mounting types, 3.2 mm mounting hole diameter, gray

Pole No.	Item No.	Pack. Unit
2	262-102	100
3	262-103	100
4	262-104	100
5	262-105	100
6	262-106	100
7	262-107	100
8	262-108	100
9	262-109	50
10	262-110	25
11	262-111	25
12	262-112	25

2-conductor terminal strip, with snap-in mounting feet, for 0.6 ... 1.2 mm plate thickness, 3.5 mm mounting hole diameter, gray

Pole No.	Item No.	Pack. Unit
2	262-152	100
3	262-153	100
4	262-154	100
5	262-155	100
6	262-156	50
7	262-157	50
8	262-158	50
9	262-159	50
10	262-160	25
11	262-161	25
12	262-162	25



### Technical Data

Rated voltage (III / 3)	630 V
Rated surge voltage (III / 3)	8 kV
Rated current	24 A
Rated voltage EN (Ex e II)	
Approval	300 V, 20 A ; 300 V, 20 A
<b>Connection Data</b>	
Solid conductor	0.08 ... 4 mm / 28 ... 12 AWG
Fine-stranded conductor	0.08 ... 4 mm / 28 ... 12 AWG
Strip length	9 ... 10 mm / 0.35 ... 0.39 inch
Module width	7 mm / 0.276 inch
Insulation material	Polyamide 66 (PA 66)

### Accessories (Selection)

Comb-style jumper bar, insulated, reduces maximum conductor size to 2.5 mm <sup>2</sup> , I <sub>N</sub> 16 A, gray	
Test plug module, snaps together Module width 7 mm	
Test plug module, snaps together Module width 12 mm	

630 V
8 kV
24 A
300 V, 20 A ; 300 V, 20 A
0.08 ... 4 mm / 28 ... 12 AWG
0.08 ... 4 mm / 28 ... 12 AWG
9 ... 10 mm / 0.35 ... 0.39 inch
7 mm / 0.276 inch
Polyamide 66 (PA 66)

	Item No.	Page
2-pole	262-402	624
gray	249-137	624

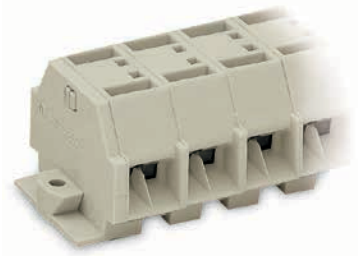
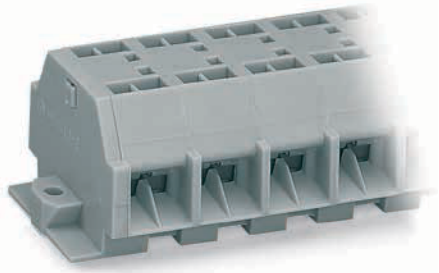
Dimensional drawing, see page 601

Tools, see Section 13

Marking accessories, see Section 13 and Volume 6

Information on hazardous locations, see Section 14

Approvals and corresponding ratings, visit [www.wago.com](http://www.wago.com)



4-conductor terminal strip, with mounting flanges, for screw or similar mounting types, 3.2 mm mounting hole diameter, gray

Pole No.	Item No.	Pack. Unit
2	262-202	100
3	262-203	100
4	262-204	100
5	262-205	100
6	262-206	50
7	262-207	50
8	262-208	50
9	262-209	50
10	262-210	25
11	262-211	25
12	262-212	25

2-conductor Ex e II terminal strip, with mounting flanges, for screw or similar mounting types, 3.2 mm mounting hole diameter, light gray

Pole No.	Item No.	Pack. Unit
2	262-132	100
3	262-133	100
4	262-134	100
5	262-135	100
6	262-136	100
7	262-137	50
8	262-138	50
9	262-139	50
10	262-140	25
11	262-141	25
12	262-142	25

4-conductor Ex e II terminal strip, with mounting flanges, for screw or similar mounting types, 3.2 mm mounting hole diameter, light gray

Pole No.	Item No.	Pack. Unit
2	262-232	100
3	262-233	100
4	262-234	100
5	262-235	100
6	262-236	50
7	262-237	50
8	262-238	50
9	262-239	50
10	262-240	25
11	262-241	25
12	262-242	25

4-conductor terminal strip, with snap-in mounting feet, for 0.6 ... 1.2 mm plate thickness, 3.5 mm mounting hole diameter, gray

Pole No.	Item No.	Pack. Unit
2	262-252	100
3	262-253	100
4	262-254	100
5	262-255	100
6	262-256	50
7	262-257	50
8	262-258	50
9	262-259	50
10	262-260	25
11	262-261	25
12	262-262	25

2-conductor Ex e II terminal strip, with snap-in mounting feet, for 0.6 ... 1.2 mm plate thickness, 3.5 mm mounting hole diameter, light gray

Pole No.	Item No.	Pack. Unit
2	262-182	100
3	262-183	100
4	262-184	100
5	262-185	100
6	262-186	50
7	262-187	50
8	262-188	50
9	262-189	50
10	262-190	25
11	262-191	25
12	262-192	25

4-conductor Ex e II terminal strip, with snap-in mounting feet, for 0.6 ... 1.2 mm plate thickness, 3.5 mm mounting hole diameter, light gray

Pole No.	Item No.	Pack. Unit
2	262-282	100
3	262-283	100
4	262-284	100
5	262-285	100
6	262-286	50
7	262-287	50
8	262-288	50
9	262-289	50
10	262-290	25
11	262-291	25
12	262-292	25



630 V

8 kV

32 A

300 V, 20 A ; 300 V, 20 A

0.08 ... 4 mm / 28 ... 12 AWG

0.08 ... 4 mm / 28 ... 12 AWG

9 ... 10 mm / 0.35 ... 0.39 inch

12 mm / 0.472 inch

Polyamide 66 (PA 66)

23 A

550 V

300 V, 20 A ; 300 V, 20 A

0.08 ... 4 mm / 28 ... 12 AWG

0.08 ... 4 mm / 28 ... 12 AWG

9 ... 10 mm / 0.35 ... 0.39 inch

7 mm / 0.276 inch

Polyamide 66 (PA 66)

30 A

550 V

300 V, 20 A ; 300 V, 20 A

0.08 ... 4 mm / 28 ... 12 AWG

0.08 ... 4 mm / 28 ... 12 AWG

9 ... 10 mm / 0.35 ... 0.39 inch

12 mm / 0.472 inch

Polyamide 66 (PA 66)

	Item No.	Page
2-pole	262-402	624
gray	249-140	624

	Item No.	Page
2-pole	262-402	624

	Item No.	Page
2-pole	262-402	624

## Accessories for 260 Series Modular Terminal Blocks and Terminal Strips

### Commoning, Mounting, Marking and Testing



Comb-style jumper bar, insulated, reduces maximum conductor size to 1 mm <sup>2</sup> , I <sub>n</sub> 10 A, gray		
	Item No.	Pack. Unit
2-pole	260-402	25

Operating tool, insulated, for comb-style jumper bar		
	Item No.	Pack. Unit
2-pole	209-132	1




End plate, with mounting flange		
Color	Item No.	Pack. Unit
gray	260-361	300 (50)



End plate, with snap-in mounting foot		
Color	Item No.	Pack. Unit
gray	260-371	300 (50)



 Test plugs,  
see page 604

Maximum test voltage: 250 V (only in test equipment acc. to relevant clearances and creepage distances)

Maximum test voltage (touch contact): 48 V (test pins are not touch-proof)

Maximum test current (touch contact): 0.5 A

Maximum test current: 6 A (if the test pins are securely connected in the clamping units)

Test voltage	48 V
Test current	0.5 A

Test plug module, snaps together Module width 5 mm			
Suitable for:	Color	Item No.	Pack. Unit
2-conductor terminal blocks	gray	249-135	100 (25)

Maximum test voltage: 250 V (only in test equipment acc. to relevant clearances and creepage distances)

Test plug module, with locking latches, snaps together Module width 5 mm			
Suitable for:	Color	Item No.	Pack. Unit
2-conductor terminal blocks	gray	260-404	100 (25)

Maximum test voltage: 500 V (only in test equipment acc. to relevant clearances and creepage distances)

Test plug module, snaps together Module width 8 mm			
Suitable for:	Color	Item No.	Pack. Unit
4-conductor terminal blocks	gray	249-138	100 (25)

Maximum test voltage: 500 V (only in test equipment acc. to relevant clearances and creepage distances)

Test plug module, with locking latches, snaps together Module width 8 mm			
Suitable for:	Color	Item No.	Pack. Unit
4-conductor terminal blocks	gray	260-405	100 (25)

8



## Accessories for 261 Series Modular Terminal Blocks and Terminal Strips

### Commoning, Mounting, Marking and Testing



Comb-style jumper bar, insulated, reduces maximum conductor size to 1.5 mm <sup>2</sup> , I <sub>n</sub> 16 A, gray			
	Item No.	Pack.	Unit
2-pole	261-402	25	



Operating tool, insulated, for comb-style jumper bar			
	Item No.	Pack.	Unit
2-pole	209-132	1	



End plate, with mounting flange			
Color	Item No.	Pack.	Unit
gray	261-361	300	(50)




End plate, with snap-in mounting foot			
Color	Item No.	Pack.	Unit
gray	261-371	300	(50)



End plate, with mounting flange			
Suitable for:	Color	Item No.	Pack. Unit
261-411	gray	261-410	300 (50)



 Test plugs,  
see page 608

Maximum test voltage: 400 V (only in test equipment acc. to relevant clearances and creepage distances)

Maximum test voltage (touch contact): 48 V (test pins are not touch-proof)

Maximum test current (touch contact): 0.5 A

Maximum test current: 6 A (if the test pins are securely connected in the clamping units)

Test voltage	48 V
Test current	0.5 A

Test plug module, snaps together Module width 6 mm			
Suitable for:	Color	Item No.	Pack. Unit
2-conductor terminal blocks	gray	249-136	100 (25)

Maximum test voltage: 400 V (only in test equipment acc. to relevant clearances and creepage distances)



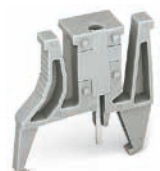
Test plug module, with locking latches, snaps together Module width 6 mm			
Suitable for:	Color	Item No.	Pack. Unit
2-conductor terminal blocks	gray	261-404	100 (25)

Maximum test voltage: 800 V (only in test equipment acc. to relevant clearances and creepage distances)



Test plug module, snaps together Module width 10 mm			
Suitable for:	Color	Item No.	Pack. Unit
4-conductor terminal blocks	gray	249-139	100 (25)

Maximum test voltage: 800 V (only in test equipment acc. to relevant clearances and creepage distances)



Test plug module, with locking latches, snaps together Module width 10 mm			
Suitable for:	Color	Item No.	Pack. Unit
4-conductor terminal blocks	gray	261-405	100 (25)

## Accessories for 262 Series Modular Terminal Blocks and Terminal Strips

### Commoning, Mounting, Marking and Testing



Comb-style jumper bar, insulated, reduces maximum conductor size to 2.5 mm <sup>2</sup> , I <sub>n</sub> 16 A, gray			
		<b>Item No.</b>	<b>Pack. Unit</b>
2-pole		262-402	25



Operating tool, insulated, for comb-style jumper bar			
		<b>Item No.</b>	<b>Pack. Unit</b>
2-pole		209-132	1



End plate, with mounting flange			
<b>Color</b>		<b>Item No.</b>	<b>Pack. Unit</b>
gray		262-361	50



End plate, with snap-in mounting foot			
<b>Color</b>		<b>Item No.</b>	<b>Pack. Unit</b>
gray		262-371	800 (50)



End plate, with mounting flange			
<b>Suitable for:</b>	<b>Color</b>	<b>Item No.</b>	<b>Pack. Unit</b>
262-130	gray	262-363	50



End plate, with snap-in mounting foot			
<b>Suitable for:</b>	<b>Color</b>	<b>Item No.</b>	<b>Pack. Unit</b>
262-230	gray	262-373	50



 Test plugs, see page 604

Maximum test voltage: 500 V (only in test equipment acc. to relevant clearances and creepage distances)  
 Maximum test voltage (touch contact): 48 V (test pins are not touch-proof)  
 Maximum test current (touch contact): 0.5 A  
 Maximum test current: 6 A (if the test pins are securely connected in the clamping units)

Test voltage	48 V
Test current	0.5 A

Test plug module, snaps together Module width 7 mm			
<b>Suitable for:</b>	<b>Color</b>	<b>Item No.</b>	<b>Pack. Unit</b>
2-conductor terminal blocks	gray	249-137	100 (25)

Maximum test voltage: 800 V (only in test equipment acc. to relevant clearances and creepage distances)

Test plug module, snaps together Module width 12 mm			
<b>Suitable for:</b>	<b>Color</b>	<b>Item No.</b>	<b>Pack. Unit</b>
4-conductor terminal blocks	gray	249-140	100 (25)



8

## X-ON Electronics

Largest Supplier of Electrical and Electronic Components

*Click to view similar products for [wago manufacturer](#):*

Other Similar products are found below :

[750-460](#) [231-118/026-000](#) [231-303/026-000](#) [231-620/019-000](#) [257-403](#) [280-438](#) [280-831](#) [284-624](#) [210-111](#) [231-303/037-000](#) [231-446/001-000\\_NR](#) [232-216/026-000](#) [234-510](#) [264-726](#) [280-339](#) [0283-0671](#) [830-800/000-305](#) [750-512](#) [750-455](#) [51251782](#) [286-312](#) [713-1428/107-000](#) [731-138/048-000](#) [750-459](#) [750-517](#) [793-3505](#) [826-172](#) [859-304](#) [280-335](#) [231-535/001-000](#) [2604-1106](#) [2604-1504](#) [2606-1103/020-000](#) [2624-1103](#) [2626-3103/020-000](#) [713-1107](#) [852-1411](#) [2106-1307](#) [2116-5307](#) [832-1205](#) [832-3604](#) [2009-110](#) [281-512/281-501](#) [286-336](#) [750-421](#) [750-838](#) [753-559](#) [750-1505](#) [787-732](#) [753-437](#)