

REVISION RECORD			
REV	ECN	DESCRIPTION	DATE

NOTES1:
 UL Standard
 1. Rated Voltage/Current : 300V / 10A
 2. Torque Value : M3, 4.43lb.in
 3. Wire Range : 22~14AWG

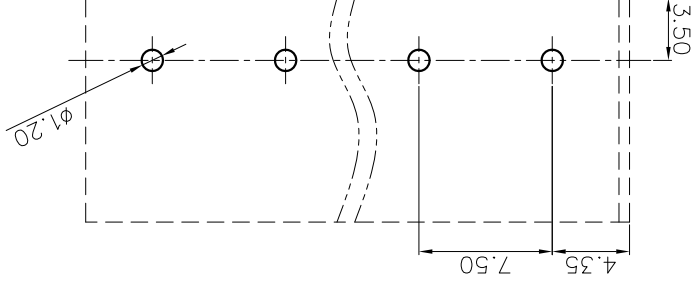
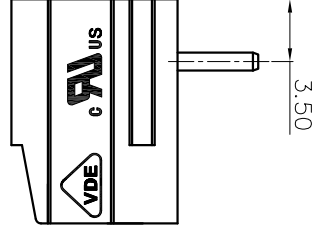
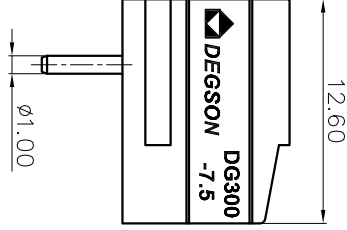
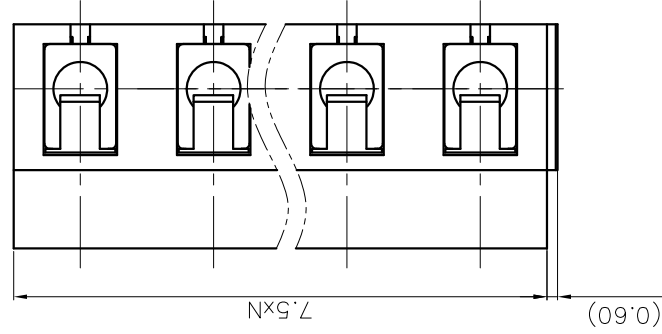
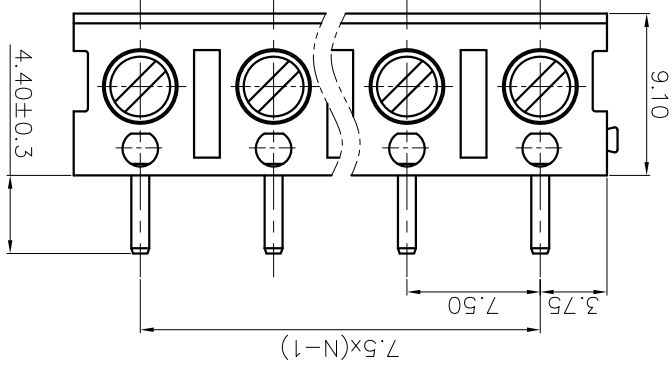
IEC Standard
 1. Rated Voltage/Current : 450V / 24A
 2. Torque Value : M3, 0.5Nm
 3. Wire Range : 1.0~2.5mm²

NOTES2:
 1. Dimension shall be interpreted per ASME Y14.5-2009
 2. Pitch : 7.5mm, Poles : N=02~24P
 3. Stripping length : 5~6mm
 4. Withstanding Voltage : AC2000V/1Min.
 5. Operating temperature: -30°C~+120°C
 6. Undimensioned Tolerances:

Pitch Range In mm	Nominal Dimension Range	Over	Under
6 to 10	0.15 to 0.25	0.10	0.10
10 to 24	0.20 to 0.30	0.10	0.10
30 to 60	0.30 to 0.50	0.10	0.10
60 to 100	0.50 to 0.70	0.10	0.10
100 to 150	0.70 to 1.00	0.10	0.10
150 to 200	1.00 to 1.30	0.10	0.10

7. RoHS Compliance

DG300R - 7.5 - XXP - 1Y - 00A (H)
 (Series No.) (Pitch) (Poles) (Single Pitch) (Color): 1.(Grey)
 2.(Blue)
 3.(Black)
 4.(Green)
 5.(Orange)
 6.(Red)
 7.(Transparent)
 8.(Yellow)
 9.(White)



PCB LAYOUT

DETACHED LISTS

PART NO.:	/
APPD.:	/
CHKD.:	/
DRFT:	/
NAME:	DG300R-7.5-XXP-1Y-00A(H)
TITLE:	CUSTOMER DRAWING
REV	D0
SHEET	1/1
SCALE	1:1

THIRD ANGLE PROJECTION

DO NOT SCALE DRAWING

MM

DRAWING NO.:

/

SCALE

1:1

SHEET

1/1

DO NOT SCALE DRAWING

1:1

NINGBO DEGSON ELECTRICAL CO., LTD



宁波高松电子有限公司

X-ON Electronics

Largest Supplier of Electrical and Electronic Components

Click to view similar products for [Pluggable Terminal Blocks](#) category:

Click to view products by [Degson](#) manufacturer:

Other Similar products are found below :

[57.404.7553](#) [57.504.0053.7](#) [57.510.0053](#) [57.910.6153](#) [01.112.1453](#) [CTB932VE/6](#) [MC 1.5/ 6-ST-3.5 GY AU](#) [ET02015000J0G](#) [734-104](#) [734-302](#) [734-304](#) [8-141-P](#) [FKCT 2.5/ 3-ST KMGY](#) [860505](#) [860508](#) [860516](#) [860810](#) [861908](#) [GBPACX-12](#) [93.731.4953.0](#) [PV05-5,08-K](#) [PVP02-5,00](#) [PVP04-3,50](#) [PVS02-5,00](#) [1-1986160-3](#) [H-10](#) [1546228-5](#) [ELFH09150](#) [ELFH16150](#) [ELFP03110](#) [ELFT06250](#) [ELFT07250](#) [ELVF09400](#) [ELVP03100](#) [ELXH03100](#) [ELXH071G0E](#) [ELXP041G0](#) [ELXT046G0](#) [1700101](#) [1700410](#) [1700425](#) [1703176](#) [1703243](#) [1705229](#) [1710175](#) [1714537](#) [1717806](#) [1719600](#) [1728941](#) [1729386](#)