

# Modulostar® CMS8

Modular fuse-holders

## FUSE HOLDERS, FUSE BASES AND SUPPORTS

### IEC CYLINDRICAL FUSE HOLDERS



The innovative and comprehensive Modulostar® range of Mersen fuse-holders. Modular fuse-holders are finger-safe under IEC standards to an IP20 grade of protection, including fuse changing (with the flick of a finger). Modular fuse-holders are available in 1, 2, 3 or 4 poles, with or without visual blown fuse indicator, in IEC version or IEC + UL version. Multi-pole units can also be field assembled by ordering pin-ties assembly kit. Modulostar® range is made of tough and durable thermoplastic or thermoset material.

### TECHNICAL DATA OVERVIEW

Voltage AC	500 VAC
Voltage DC	500 VDC
Amper (A)	25 A
Mounting	Installation on to DIN rails to EN 60715
Product Size	For cylindrical fuse links 8.5x31.5 aM, gG
Number of Poles	1 to 4 poles

### FEATURES & BENEFITS

- Finger safe
- Degree of protection: IP20
- Optional visual blown fuse indicator
- DIN rail mounting
- Modular design
- Lockable
- Multi-pole assembly kit available
- Sealable in closed and open position
- Plastic material UL94V2 mini
- Flame retardant materials with glow wire flammability index to 960°C

### APPLICATIONS

- All circuits up to 500VAC for protection of motors, transformers, low voltage distribution, control circuits
- Non-load operation

### STANDARDS

- IEC 60269-2 and IEC 60947-3 Compliance
- RoHS Compliant
- Plastic material: NF 16101 & 16102 Requirement 2 Compliant



## PRODUCT RANGE



CMS81



CMS82



CMS83



CMS83N



CMS81I



CMS83NI

### Modulostar® fuse-holders for 8.5x31.5 fuse-links, without indicator

Catalog number	Item number	Number of poles/ phases	Design	Weight	Package
CMS810N	D305006	N	CMS8 CMS10 neutral conductor	0.0658 kg	12
CMS81	X305000	1	CMS8 single pole	0.0608 kg	12
CMS81N	Y305001	1 + N	CMS8 single pole + neutral conductor	0.07 kg	6
CMS82	Z305002	2	CMS8 double pole	0.1216 kg	6
CMS83	A305003	3	CMS8 triple pole	0.1825 kg	4
CMS83N	B305004	3 + N	CMS8 triple pole + neutral conductor	0.2633 kg	3
CMS84	C305005	4	CMS8 quadruple pole	0.2433 kg	3

### Modulostar® fuse-holders for 8.5x31.5 fuse-links, with indicator

Catalog number	Item number	Number of poles/ phases	Design	Weight	Package
CMS81I	E305007	1	CMS8 single pole	0.0608 kg	12
CMS81NI	F305008	1 + N	CMS8 single pole + neutral conductor	0.1316 kg	12
CMS83I	H305010	3	CMS8 triple pole	0.1825 kg	6
CMS83NI	J305011	3 + N	CMS8 triple pole + neutral conductor	0.2633 kg	4
CMS84I	K305012	4	CMS8 quadruple pole	0.2433 kg	3
CMS82I	G305009	2	CMS8 double pole	0.1216 kg	6

## TECHNICAL DATA

	CMS8	CMS8I
Size	8.5 x 31.5	8.5 x 31.5
Number of poles/phases	1, 1+N, 2, 3, 3+N, 4	1, 1+N, 2, 3, 3+N, 4
Conventional free air thermal current with fuse links I <sub>th</sub>	25 A	25 A
Power dissipation at I <sub>th</sub>	2.5 W	2.5 W
Utilisation category	AC20B/DC20B	AC20B/DC20B
Rated insulation voltage U <sub>i</sub>	500 V	500 V
Rated impulse withstand voltage U <sub>imp</sub>	6 kV	6 kV
Degree of protection	IP 20	IP 20
Voltage limit for blown fuse indicator	-	230 to 690V AC/DC
Indication System	-	with indicator
Operating temperature	-25°C to 60°C	-25°C to 60°C
Connection	Max. tightening torque: 2.2Nm (19lbs.-in) Rigid wire = 1-16mm <sup>2</sup> (16-6AWG) Multistrand wire = 0.75-10mm <sup>2</sup> (18-8AWG) PZ2 or flat 5.5x1mm screw drivers recommended (max. diameter 6mm)	Max. tightening torque: 2.2Nm (19lbs.-in) Rigid wire = 1-16mm <sup>2</sup> (16-6AWG) Multistrand wire = 0.75-10mm <sup>2</sup> (18-8AWG) PZ2 or flat 5.5x1mm screw drivers recommended (max. diameter 6mm)
Storage temperature	-25°C to 80°C	-25°C to 80°C

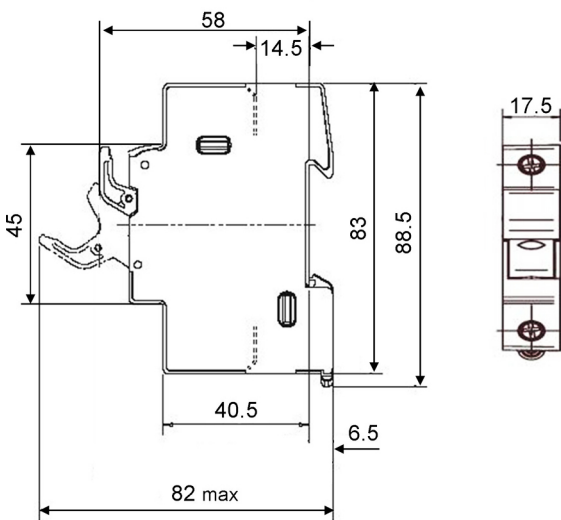
## SPECIFIC USAGE CONDITIONS

Ambient temperature	>20°C	30°C	40°C	50°C	60°C
Derating factor (I <sub>e</sub> )	1	0.95	0.9	0.8	0.7

No of poles (side by side)	1 to 3	>= 4
Derating factor of current (I <sub>th</sub> )	1	0.9

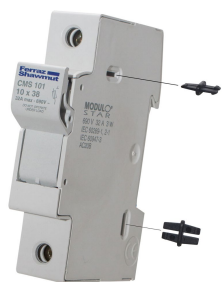
## DIMENSIONS

### Modulostar<sup>®</sup> CMS8 fuse-holders for cylindrical fuse-links class 8.5x31.5mm



Dimensions in mm

## ACCESSORIES



CMS8010PAK + fuse-holder

### Kit for multi phase connection

Catalog number	Item number	Weight	Description	Weight	Package
CMS810PAK	Z233725	0.5 g	Links for connection of multipole units	0.5 g	12

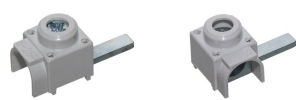


TAGLOCKCMS810

LOCK

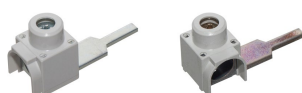
### Locking devices

Catalog number	Item number	Weight	Description	Weight	Package
TAGLOCKCMS810	A235773	9 g	Locking kit (Tag and lockout)	9 g	1
LOCK	M223525	0.475 kg	Padlock	475 g	1



TBB1A

TBB1C



TBB23A

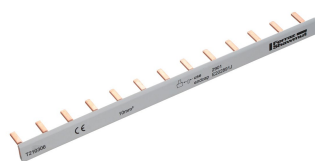
TBB23C

### Power supply

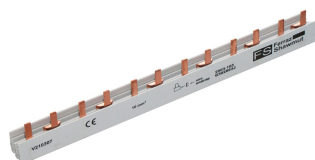
Catalog number	Item number	Weight	Description	Application	Weight	Package
TBB1A	D210315	10.1 g	1 phase axial incoming power supply	Max. rms current 90A	10.1 g	50
TBB1C	E210316	10 g	1 phase lateral incoming power supply	Max. rms current 90A	10 g	50
TBB23A	F210317	23.3 g	2 & 3 phases axial incoming power supply	Max. rms current 90A	23.3 g	50
TBB23C	G210318	23.1 g	2 & 3 phases lateral incoming power supply	Max. rms current 90A	23.1 g	50

MERSEN reserves the right to change, update or correct, without notice, any information contained in this datasheet.

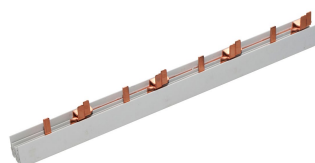
## ACCESSORIES



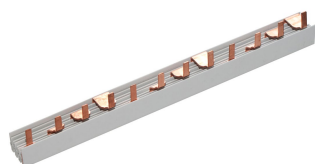
CMS810BB1F13



CMS810BB2F6



CMS810BB3F4



CMS810BB4F3

### Wiring bars / Insulated bus bars

Catalog number	Item number	Weight	Description	Application	Weight	Package
CMS810BB1F13	T210306	40.2 g	single pole, 10 mm <sup>2</sup> , partition 17,5 mm (distance of poles), peg design, L-shaped	Max. rms current 63A, for installation of 13 modules	33.5 g	10
CMS810BB2F6	V210307	80 g	double pole, 10 mm <sup>2</sup> , partition 17,5 mm (distance of poles), peg design, L-shaped	Max. rms current 63A, for installation of 6 modules	80 g	10
CMS810BB3F4	W210308	95.8 g	triple pole, 10 mm <sup>2</sup> partition 17,5 mm (distance of poles), peg design, L-shaped	Max. rms current 100A, for installation of 4 modules	84 g	10
CMS810BB4F3	X210309	0.12 kg	quadruple pole, 10 mm <sup>2</sup> , partition 17,5 mm (distance of poles), peg design, L-shaped	Max. rms current 100A, for installation of 3 modules	120 g	10

## X-ON Electronics

Largest Supplier of Electrical and Electronic Components

*Click to view similar products for [mersen](#) manufacturer:*

Other Similar products are found below :

[HE-54](#) [RT3625B02500](#) [RT3835C00000](#) [RT7180U00000](#) [T331079](#) [J212091](#) [A50QS200-4](#) [A331016F](#) [A70QS400-4](#) [RT3840C00000](#)  
[A50QS300-4](#) [A70QS200-4](#) [66344-72.0](#) [A50QS50-4](#) [ATDR10](#) [6,9URD30TTF0500](#) [A50QS150-4](#) [A50QS250-4](#) [A50QS350-4](#) [A70QS250-4](#)  
[DCT20-SB](#) [DCT10-SB](#) [C215650](#) [RT3610B02500](#) [RT3850C00000](#) [RT3860C00000](#) [RT7080U00000](#) [RT7102U00000](#) [RT7110U00000](#)  
[RT3855C00000](#) [RT7104U00000](#) [S218194](#) [ATDR1](#) [RT3810B02500](#) [RT7010U00000](#) [RT5235B00000](#) [RT5240B00000](#) [F214618](#) [A214107](#)  
[RT3325B02500](#) [RT5553B00000](#) [RT5660B00000](#) [RT3845C00000](#) [RT3115B02500](#) [RT5035B00000](#) [RT1250B00000](#) [RT3120B02500](#)  
[RT3410B02500](#) [RT3720B02500](#) [RT7002U00000](#)