



IDC Connectors

GIC EMEA Product Guide – December 01

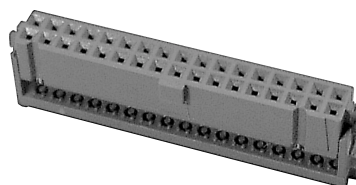
Introduction

This guide illustrates the broad range of IDC connectors now available through the AMP and Ansley brands. Marketed in three performance levels, the range offers a wide choice of products to suit all applications. Additional sizes and styles are available on enquiry.

Premium Range

Ansley 609 Sockets

Contact material	Beryllium Copper
Contact area plating	0.76um Au
Colour	Blue
Insulation material	Glass filled thermoplastic
Flammability	UL 94V-0
Current rating	1A
Insulation resistance	1 x 10 ⁹ Ω @ 500V dc
Dielectric strength	>1000V rms at sea level
Temperature rating	-55 to +125C



Socket with Centre Polarisation

No of Ways	Part Ref	Part No
10	609-1030	3-1437020-0
14	609-1430	4-1437020-6
16	609-1630	6-1437020-1
20	609-2030	7-1437020-9
26	609-2630	0-1437021-5
34	609-3430	2-1437021-6
40	609-4030	5-1437021-0
50	609-5030	7-1437021-4
60	609-6030	9-1437021-9

Socket with Centre Polarisation and Strain Relief

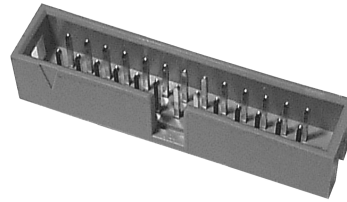
No of Ways	Part Ref	Part No
10	609-1041	3-1437020-9
14	609-1441	5-1437020-2
16	609-1641	6-1437020-8
20	609-2041	8-1437020-8
26	609-2641	1-1437021-4
34	609-3441	3-1437021-4
40	609-4041	5-1437021-7
50	609-5041	8-1437021-3
60	609-6041	0-1437022-7

Strain Relief

No of Ways	Part Ref	Part No
10	609-1031	3-1437020-5
14	609-1431	4-1437020-9
16	609-1631	6-1437020-4
20	609-2031	8-1437020-4
26	609-2631	1-1437021-0
34	609-3431	3-1437021-0
40	609-4031	5-1437021-3
50	609-5031	7-1437021-9
60	609-6031	0-1437022-3

Ansley 609 Box Headers

Contact material	Phosphor Bronze
Contact area plating	0.76um Au
Colour	Blue
Insulation material	Glass filled thermoplastic
Flammability	UL 94V-0
Current rating	1A
Insulation resistance	1 x 10 ⁹ Ω @ 500V dc
Dielectric strength	>1000V rms at sea level
Temperature rating	-55 to +125C



Box Header Straight without Latches

No of Ways	Part Ref	Part No
10	609-1027	4-1437044-3
14	609-1427	5-1437044-9
16	609-1627	8-1437044-0
20	609-2027	0-1437045-2
26	609-2627	3-1437045-2
34	609-3427	5-1437045-4
40	609-4027	8-1437045-3
50	609-5027	1-1437046-5
60	609-6027	3-1437046-4

Box Header Right Angle without Latches

No of Ways	Part Ref	Part No
10	609-1007	3-1437044-7
14	609-1407	5-1437044-3
16	609-1607	7-1437044-3
20	609-2007	9-1437044-5
26	609-2607	2-1437045-5
34	609-3407	4-1437045-7
40	609-4007	7-1437045-3
50	609-5007	0-1437046-6
60	609-6007	3-1437046-1

Box Header Straight with Short Latches

No of Ways	Part Ref	Part No
10	609-1027E	0-1437049-9
14	609-1427E	3-1437049-2
16	609-1627E	5-1437049-0
20	609-2027E	7-1437049-1
26	609-2627E	1-1437050-0
34	609-3427E	3-1437050-6
40	609-4027E	7-1437050-7
50	609-5027E	2-1437051-2
60	609-6027E	6-1437051-2

Box Header Right Angle with Short Latches

No of Ways	Part Ref	Part No
10	609-1007E	0-1437049-3
14	609-1407E	2-1437049-6
16	609-1607E	4-1437049-4
20	609-2007E	6-1437049-3
26	609-2607E	0-1437050-2
34	609-3407E	2-1437050-9
40	609-4007E	6-1437050-4
50	609-5007E	1-1437051-5
60	609-6007E	5-1437051-5

Box Header Straight with Long Latches

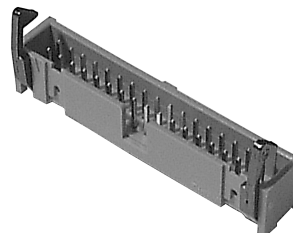
No of Ways	Part Ref	Part No
10	609-1027ES	1-1437049-0
14	609-1427ES	3-1437049-3
16	609-1627ES	5-1437049-2
20	609-2027ES	7-1437049-2
26	609-2627ES	1-1437050-1
34	609-3427ES	3-1437050-7
40	609-4027ES	7-1437050-8
50	609-5027ES	2-1437051-3
60	609-6027ES	6-1437051-4

Box Header Right Angle with Long Latches

No of Ways	Part Ref	Part No
10	609-1007ES	0-1437049-4
14	609-1407ES	2-1437049-7
16	609-1607ES	4-1437049-5
20	609-2007ES	6-1437049-4
26	609-2607ES	0-1437050-3
34	609-3407ES	3-1437050-0
40	609-4007ES	6-1437050-7
50	609-5007ES	1-1437051-6
60	609-6007ES	5-1437051-6

Ansley 501 Box Headers

Contact material	Phosphor Bronze
Contact area plating	0.76um Au
Colour	Blue
Insulation material	Glass filled thermoplastic
Flammability	UL 94V-0
Current rating	1A
Insulation resistance	1 x 10 ⁹ Ω @ 500V dc
Dielectric strength	>1000V rms at sea level
Temperature rating	-55 to +125C



Box Header Straight with Short Side Latches

No of Ways	Part Ref	Part No
10	501-1027E	2-1437063-8
14	501-1427E	5-1437063-2
16	501-1627E	6-1437063-3
20	501-2027E	8-1437063-0
26	501-2627E	0-1437064-3
34	501-3427E	3-1437064-9
40	501-4027E	6-1437064-8
50	501-5027E	9-1437064-8
60	501-6027E	2-1437065-4

Box Header Right Angle with Short Side Latches

No of Ways	Part Ref	Part No
10	501-1007E	2-1437063-1
14	501-1407E	4-1437063-4
16	501-1607E	5-1437063-6
20	501-2007E	7-1437063-1
26	501-2607E	9-1437063-5
34	501-3407E	3-1437064-3
40	501-4007E	5-1437064-6
50	501-5007E	8-1437064-8
60	501-6007E	1-1437065-8

Box Header Straight with Long Side Latches

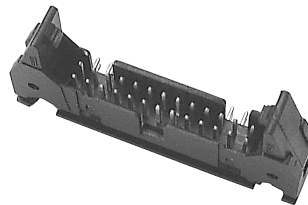
No of Ways	Part Ref	Part No
10	501-1027ES	3-1437063-0
14	501-1427ES	5-1437063-3
16	501-1627ES	6-1437063-4
20	501-2027ES	8-1437063-1
26	501-2627ES	0-1437064-5
34	501-3427ES	4-1437064-1
40	501-4027ES	7-1437064-0
50	501-5027ES	0-1437065-1
60	501-6027ES	2-1437065-7

Box Header Right Angle with Long Side Latches

No of Ways	Part Ref	Part No
10	501-1007ES	2-1437063-3
14	501-1407ES	4-1437063-6
16	501-1607ES	5-1437063-8
20	501-2007ES	7-1437063-3
26	501-2607ES	9-1437063-7
34	501-3407ES	3-1437064-5
40	501-4007ES	5-1437064-8
50	501-5007ES	9-1437064-1
60	501-6007ES	2-1437065-0

Ansley 609 Standard Headers

Contact material	Phosphor Bronze
Contact area plating	0.76um Au
Colour	Blue
Insulation material	Glass filled thermoplastic
Flammability	UL 94V-0
Current rating	1A
Insulation resistance	1 x 10 ⁹ Ω @ 500V dc
Dielectric strength	>1000V rms at sea level
Temperature rating	-55 to +125C



Standard Header Straight with Short Latches

No of Ways	Part Ref	Part No
10	609-1024E	6-1437054-3
14	609-1424E	2-1437055-7
16	609-1624E	5-1437055-8
20	609-2024E	9-1437055-1
26	609-2624E	5-1437056-7
34	609-3424E	2-1437057-8
40	609-4024E	8-1437057-7
50	609-5024E	4-1437058-5
60	609-6024E	2-1437059-0

Standard Header Right Angle with Short Latches

No of Ways	Part Ref	Part No
10	609-1004E	4-1437054-8
14	609-1404E	1-1437055-4
16	609-1604E	4-1437055-5
20	609-2004E	7-1437055-7
26	609-2604E	4-1437056-3
34	609-3404E	1-1437057-1
40	609-4004E	7-1437057-0
50	609-5004E	2-1437058-9
60	609-6004E	0-1437059-5

Standard Header Straight with Long Latches

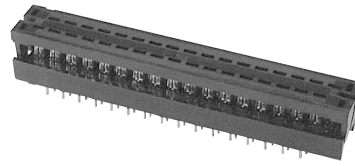
No of Ways	Part Ref	Part No
10	609-1024ES	6-1437054-6
14	609-1424ES	2-1437055-9
16	609-1624ES	6-1437055-0
20	609-2024ES	9-1437055-4
26	609-2624ES	5-1437056-9
34	609-3424ES	3-1437057-1
40	609-4024ES	9-1437057-0
50	609-5024ES	4-1437058-9
60	609-6024ES	2-1437059-2

Standard Header Right Angle with Long Latches

No of Ways	Part Ref	Part No
10	609-1004ES	5-1437054-1
14	609-1404ES	1-1437055-7
16	609-1604ES	4-1437055-8
20	609-2004ES	8-1437055-0
26	609-2604ES	4-1437056-6
34	609-3404ES	1-1437057-4
40	609-4004ES	7-1437057-3
50	609-5004ES	3-1437058-2
60	609-6004ES	0-1437059-8

Ansley 609 PCB Transition Connectors

Contact material	Beryllium Copper
Contact area plating	SnPb
Colour	Blue
Insulation material	Glass filled thermoplastic
Flammability	UL 94V-0
Current rating	1A
Insulation resistance	1 x 10 ⁹ Ω
Dielectric strength	>1000V rms at sea level
Temperature rating	-55 to +125C



PCB Transition Connector 2 Row

No of Ways	Part Ref	Part No
10	609-1053	0-1437006-7
14	609-1453	1-1437006-0
16	609-1653	1-1437006-3
20	609-2053	1-1437006-6
26	609-2653	2-1437006-1
34	609-3453	2-1437006-4
40	609-4053	2-1437006-8
50	609-5053	3-1437006-3
60	609-6053	3-1437006-8

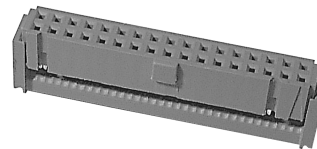
PCB Transition Connector 4 Row

No of Ways	Part Ref	Part No
10	609-1003	0-1437006-5
14	609-1403	0-1437006-8
16	609-1603	1-1437006-1
20	609-2003	1-1437006-4
26	609-2603	1-1437006-8
34	609-3403	2-1437006-2
40	609-4003	2-1437006-6
50	609-5003	3-1437006-1
60	609-6003	3-1437006-6

Industrial Range - Style 1

Ansley 622 Sockets

Contact material	Beryllium Copper
Contact area plating	0.76um Au
Colour	Blue
Insulation material	Glass filled thermoplastic
Flammability	UL 94V-0
Current rating	1A
Insulation resistance	1 x 10 ⁹ Ω @ 500V dc
Dielectric strength	>1000V rms at sea level
Temperature rating	-55 to +125C



Socket with Centre Polarisation

No of Ways	Part Ref	Part No
10	622-1030	4-1437023-1
14	622-1430	6-1437023-6
16	622-1630	8-1437023-3
20	622-2030	0-1437024-2
26	622-2630	2-1437024-4
34	622-3430	4-1437024-8
40	622-4030	7-1437024-7
50	622-5030	0-1437025-4
60	622-6030	2-1437025-7

Socket with Centre Polarisation and Strain Relief

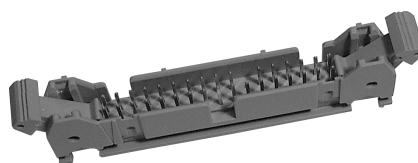
No of Ways	Part Ref	Part No
10	622-1041	4-1437023-9
14	622-1441	7-1437023-4
16	622-1641	9-1437023-1
20	622-2041	0-1437024-7
26	622-2641	3-1437024-0
34	622-3441	5-1437024-6
40	622-4041	8-1437024-6
50	622-5041	1-1437025-6
60	622-6041	3-1437025-2

Strain Relief

No of Ways	Part Ref	Part No
10	622-1031	4-1437023-7
14	622-1431	7-1437023-1
16	622-1631	8-1437023-9
20	622-2031	0-1437024-5
26	622-2631	2-1437024-8
34	622-3431	5-1437024-3
40	622-4031	8-1437024-3
50	622-5031	1-1437025-2
60	622-6031	3-1437025-0

Ansley 622 Standard Headers

Contact material	Phosphor Bronze
Contact area plating	0.76um Au
Colour	Blue
Insulation material	Glass filled thermoplastic
Flammability	UL 94V-0
Current rating	1A
Insulation resistance	1 x 10 ⁹ Ω @ 500V dc
Dielectric strength	>1000V rms at sea level
Temperature rating	-55 to +125C



Standard Header Straight with Short Latches

No of Ways	Part Ref	Part No
10	622-1024E	8-1437059-8
14	622-1424E	0-1437060-1
16	622-1624E	1-1437060-3
20	622-2024E	2-1437060-6
26	622-2624E	4-1437060-4
34	622-3424E	5-1437060-8
40	622-4024E	7-1437060-2
50	622-5024E	9-1437060-0
60	622-6024E	0-1437061-1

Standard Header Right Angle with Short Latches

No of Ways	Part Ref	Part No
10	622-1004E	8-1437059-3
14	622-1404E	9-1437059-6
16	622-1604E	0-1437060-7
20	622-2004E	2-1437060-1
26	622-2604E	3-1437060-7
34	622-3404E	5-1437060-3
40	622-4004E	6-1437060-7
50	622-5004E	8-1437060-4
60	622-6004E	9-1437060-6

Standard Header Straight with Long Latches

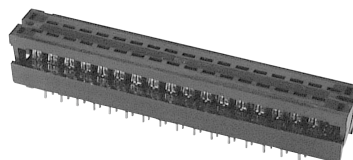
No of Ways	Part Ref	Part No
10	622-1024ES	8-1437059-9
14	622-1424ES	0-1437060-2
16	622-1624ES	1-1437060-4
20	622-2024ES	2-1437060-7
26	622-2624ES	4-1437060-5
34	622-3424ES	5-1437060-9
40	622-4024ES	7-1437060-3
50	622-5024ES	9-1437060-1
60	622-6024ES	0-1437061-2

Standard Header Right Angle with Long Latches

No of Ways	Part Ref	Part No
10	622-1004ES	8-1437059-4
14	622-1404ES	9-1437059-7
16	622-1604ES	0-1437060-8
20	622-2004ES	2-1437060-2
26	622-2604ES	3-1437060-8
34	622-3404ES	5-1437060-4
40	622-4004ES	6-1437060-8
50	622-5004ES	8-1437060-5
60	622-6004ES	9-1437060-7

Ansley 622 PCB Transition Connectors

Contact material	Beryllium Copper
Contact area plating	SnPb
Colour	Blue
Insulation material	Glass filled thermoplastic
Flammability	UL 94V-0
Current rating	1A
Insulation resistance	1 x 10 ⁹ Ω
Dielectric strength	>1000V rms at sea level
Temperature rating	-55 to +125C



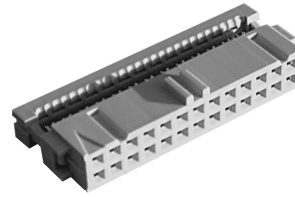
PCB Transition Connector 2 Row

No of Ways	Part Ref	Part No
10	622-1053	1-1437007-2
14	622-1453	2-1437007-0
16	622-1653	2-1437007-9
20	622-2053	3-1437007-7
26	622-2653	5-1437007-1
34	622-3453	6-1437007-5
40	622-4053	7-1437007-7
50	622-5053	8-1437007-9
60	622-6053	9-1437007-9

Industrial Range - Style 2

AMP-Latch Sockets

Contact material	Phosphor Bronze
Contact area plating	0.8um Au
Colour	Grey
Insulation material	Thermoplastic Polyester
Flammability	UL 94V-0
Current rating	1A
Insulation resistance	1 x 10 ⁹ Ω
Dielectric strength	1000V
Temperature rating	-55 to +105C



Socket with Centre Polarisation

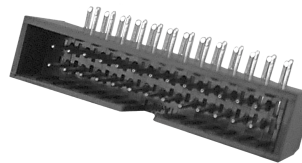
No of Ways	Part No
10	1-215882-0
14	1-215882-4
16	1-215882-6
20	2-215882-0
26	2-215882-6
34	3-215882-4
40	4-215882-0
50	5-215882-0
60	6-215882-0

Strain Relief

No of Ways	Part No
10	1-100103-0
14	1-100103-4
16	1-100103-6
20	2-100103-0
26	2-100103-6
34	3-100103-4
40	4-100103-0
50	5-100103-0
60	6-100103-0

AMP-Latch Box Headers

Contact material	Brass
Contact area plating	0.8um Au
Colour	Black
Insulation material	Thermoplastic Polyester
Flammability	UL 94V-0
Current rating	1A
Insulation resistance	1 x 10 ⁹ Ω
Dielectric strength	1000V
Temperature rating	-55 to +105C



Box Header Straight without Latches

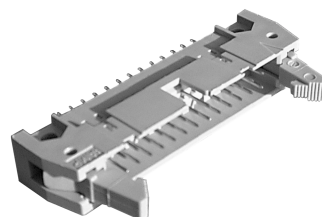
No of Ways	Part No
10	0-281271-1
14	0-281272-1
16	0-281273-1
20	0-281274-1
26	0-281275-1
34	0-281276-1
40	0-281277-1
50	0-281278-1

Box Header Right Angle without Latches

No of Ways	Part No
10	0-281279-1
14	0-281280-1
16	0-281281-1
20	0-281282-1
26	0-281283-1
34	0-281284-1
40	0-281285-1
50	0-281286-1

AMP-Latch Standard Headers

Contact material	Brass
Contact area plating	0.8um Au
Colour	Grey
Insulation material	Thermoplastic Polyester
Flammability	UL 94V-0
Current rating	1A
Insulation resistance	1 x 10 ⁹ Ω
Dielectric strength	1000V
Temperature rating	-55 to +105C



Standard Header Straight with Short Latches

No of Ways	Part No
10	1-828588-0
14	1-828588-4
16	1-828588-6
20	2-828588-0
26	2-828588-6
34	3-828588-4
40	4-828588-0
50	5-828588-0
60	6-828588-0

Standard Header Right Angle with Short Latches

No of Ways	Part No
10	1-828584-0
14	1-828584-4
16	1-828584-6
20	2-828584-0
26	2-828584-6
34	3-828584-4
40	4-828584-0
50	5-828584-0
60	6-828584-0

Standard Header Straight with Long Latches

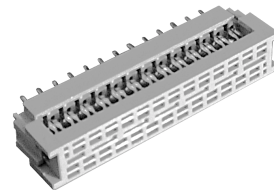
No of Ways	Part No
10	1-828590-0
14	1-828590-4
16	1-828590-6
20	2-828590-0
26	2-828590-6
34	3-828590-4
40	4-828590-0
50	5-828590-0
60	6-828590-0

Standard Header Right Angle with Long Latches

No of Ways	Part No
10	1-828586-0
14	1-828586-4
16	1-828586-6
20	2-828586-0
26	2-828586-6
34	3-828586-4
40	4-828586-0
50	5-828586-0
60	6-828586-0

AMP-Latch PCB Transition Connectors

Contact material	Phosphor Bronze
Contact area plating	SnPb
Colour	Grey
Insulation material	Thermoplastic Polyester
Flammability	UL 94V-0
Current rating	1A
Insulation resistance	1 x 10 ⁹ Ω
Dielectric strength	1000V
Temperature rating	-55 to +105C



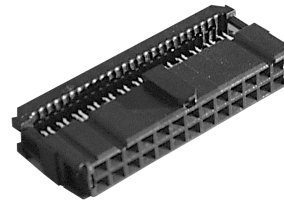
PCB Transition Connector 2 Row

No of Ways	Part No
10	1-216093-0
14	1-216093-4
16	1-216093-6
20	2-216093-0
26	2-216093-6
34	3-216093-4
40	4-216093-0
50	5-216093-0
60	6-216093-0

Commercial Range – Style 1

AMP-Latch Sockets

Contact material	Phosphor Bronze
Contact area plating	0.38um Au
Colour	Black
Insulation material	Thermoplastic
Flammability	UL 94V-0
Current rating	1A
Insulation resistance	1 x 10 ⁹ Ω
Dielectric strength	1000V
Temperature rating	-55 to +105C



Socket with Centre Polarisation

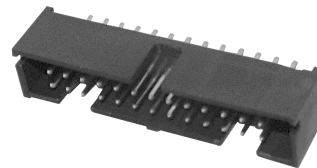
No of Ways	Part No
10	0-746285-1
14	0-746285-2
16	0-746285-3
20	0-746285-4
26	0-746285-6
34	0-746285-8
40	0-746285-9
50	1-746285-0
60	1-746285-1

Strain Relief

No of Ways	Part No
10	0-499252-5
14	0-499252-9
16	0-499252-8
20	0-499252-2
26	0-499252-3
34	0-499252-6
40	0-499252-1
50	0-499252-4
60	0-499252-7

AMP-Latch Box Headers

Contact material	Copper Alloy
Contact area plating	0.38um Au
Colour	Black
Insulation material	Thermoplastic
Flammability	UL 94V-0
Current rating	1A
Insulation resistance	1 x 10 ⁹ Ω
Dielectric strength	1000V
Temperature rating	-55 to +105C



Box Header Straight without Latches

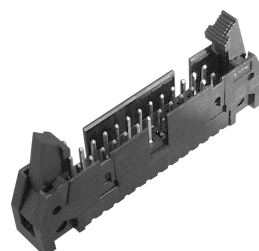
No of Ways	Part No
10	0-103308-1
14	0-103308-2
16	0-103308-3
20	0-103308-5
26	0-103308-6
34	0-103308-7
40	0-103308-8
50	1-103308-0
60	1-103308-2

Box Header Right Angle without Latches

No of Ways	Part No
10	0-103310-1
14	0-103310-2
16	0-103310-3
20	0-103310-5
26	0-103310-6
34	0-103310-7
40	0-103310-8
50	1-103310-0
60	1-103310-2

AMP-Latch Standard Headers

Contact material	Copper Alloy
Contact area plating	0.38um Au
Colour	Black
Insulation material	Thermoplastic
Flammability	UL 94V-0
Current rating	1A
Insulation resistance	1 x 10 ⁹ Ω
Dielectric strength	1000V
Temperature rating	-55 to +105C



Standard Header Straight with Short Latches

No of Ways	Part No
10	0-499910-1
14	0-499910-2
16	0-499910-3
20	0-499910-4
26	0-499910-6
34	0-499910-8
40	0-499910-9
50	1-499910-0
60	1-499910-1

Standard Header Right Angle with Short Latches

No of Ways	Part No
10	0-499913-1
14	0-499913-2
16	0-499913-3
20	0-499913-4
26	0-499913-6
34	0-499913-8
40	0-499913-9
50	1-499913-0
60	1-499913-1

Standard Header Straight with Long Latches

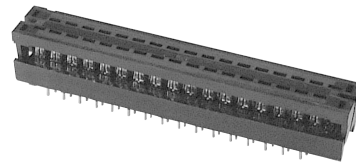
No of Ways	Part No
10	0-499922-1
14	0-499922-2
16	0-499922-3
20	0-499922-4
26	0-499922-6
34	0-499922-8
40	0-499922-9
50	1-499922-0
60	1-499922-1

Standard Header Right Angle with Long Latches

No of Ways	Part No
10	0-499786-1
14	0-499786-2
16	0-499786-3
20	0-499786-4
26	0-499786-6
34	0-499786-8
40	0-499786-9
50	1-499786-0
60	1-499786-1

AMP-Latch PCB Transition Connectors

Contact material	Phosphor Bronze
Contact area plating	SnPb
Colour	Black
Insulation material	Thermoplastic
Flammability	UL 94V-0
Current rating	1A
Insulation resistance	1 x 10 ⁹ Ω
Dielectric strength	1000V
Temperature rating	-55 to +105C



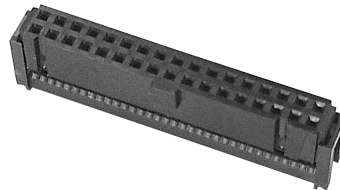
PCB Transition Connector 2 Row

No of Ways	Part No
10	0-746610-1
14	0-746610-2
16	0-746610-3
20	0-746610-4
26	0-746610-6
34	0-746610-8
40	0-746610-9
50	1-746610-0
60	1-746610-1

Commercial Range - Style 2

Ansley 636 Sockets

Contact material	Phosphor Bronze
Contact area plating	0.38um Au
Colour	Black
Insulation material	Glass filled thermoplastic
Flammability	UL 94V-0
Current rating	1A
Insulation resistance	1 x 10 ⁹ Ω @ 500V dc
Dielectric strength	>1000V rms at sea level
Temperature rating	-55 to +105C



Socket with Centre Polarisation

No of Ways	Part Ref	Part No
10	636-1030	3-1437026-4
14	636-1430	5-1437026-8
16	636-1630	7-1437026-8
20	636-2030	0-1437027-2
26	636-2630	2-1437027-7
34	636-3430	6-1437027-3
40	636-4030	0-1437028-9
50	636-5030	5-1437028-7
60	636-6030	9-1437028-3

Socket with Centre Polarisation and Strain Relief

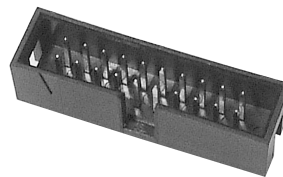
No of Ways	Part Ref	Part No
10	636-1041	4-1437026-2
14	636-1441	6-1437026-8
16	636-1641	8-1437026-8
20	636-2041	0-1437027-9
26	636-2641	3-1437027-7
34	636-3441	8-1437027-4
40	636-4041	3-1437028-7
50	636-5041	7-1437028-2
60	636-6041	9-1437028-6

Strain Relief

No of Ways	Part Ref	Part No
10	636-1031	3-1437026-9
14	636-1431	6-1437026-6
16	636-1631	8-1437026-5
20	636-2031	0-1437027-7
26	636-2631	3-1437027-4
34	636-3431	8-1437027-0
40	636-4031	3-1437028-4
50	636-5031	6-1437028-8
60	636-6031	9-1437028-5

Ansley 636 Box Headers

Contact material	Brass
Contact area plating	0.38um Au
Colour	Black
Insulation material	Glass filled thermoplastic
Flammability	UL 94V-0
Current rating	1A
Insulation resistance	1 x 10 ⁹ Ω @ 500V dc
Dielectric strength	>1000V rms at sea level
Temperature rating	-55 to +125C



Box Header Straight without Latches

No of Ways	Part Ref	Part No
10	636-1027	1-1437061-9
14	636-1427	2-1437061-7
16	636-1627	3-1437061-5
20	636-2027	4-1437061-3
26	636-2627	5-1437061-9
34	636-3427	7-1437061-5
40	636-4027	8-1437061-5
50	636-5027	9-1437061-5
60	636-6027	0-1437062-4

Box Header Right Angle without Latches

No of Ways	Part Ref	Part No
10	636-1007	1-1437061-5
14	636-1407	2-1437061-3
16	636-1607	3-1437061-1
20	636-2007	3-1437061-9
26	636-2607	5-1437061-5
34	636-3407	7-1437061-1
40	636-4007	7-1437061-9
50	636-5007	9-1437061-1
60	636-6007	9-1437061-9

Ansley 636 Standard Headers

Contact material	Phosphor Bronze
Contact area plating	0.38um Au
Colour	Black
Insulation material	Glass filled thermoplastic
Flammability	UL 94V-0
Current rating	1A
Insulation resistance	1 x 10 ⁹ Ω @ 500V dc
Dielectric strength	>1000V rms at sea level
Temperature rating	-55 to +125C



Standard Header Straight with Short Latches

No of Ways	Part Ref	Part No
10	636-1024E	7-1437046-0
14	636-1424E	8-1437046-7
16	636-1624E	9-1437046-9
20	636-2024E	1-1437047-5
26	636-2624E	3-1437047-4
34	636-3424E	5-1437047-2
40	636-4024E	6-1437047-6
50	636-5024E	8-1437047-6
60	636-6024E	9-1437047-8

Standard Header Right Angle with Short Latches

No of Ways	Part Ref	Part No
10	636-1004E	6-1437046-3
14	636-1404E	7-1437046-9
16	636-1604E	9-1437046-4
20	636-2004E	0-1437047-8
26	636-2604E	2-1437047-8
34	636-3404E	4-1437047-6
40	636-4004E	6-1437047-0
50	636-5004E	7-1437047-7
60	636-6004E	9-1437047-3

Standard Header Straight with Long Latches

No of Ways	Part Ref	Part No
10	636-1024ES	7-1437046-1
14	636-1424ES	8-1437046-8
16	636-1624ES	0-1437047-1
20	636-2024ES	1-1437047-6
26	636-2624ES	3-1437047-5
34	636-3424ES	5-1437047-3
40	636-4024ES	6-1437047-7
50	636-5024ES	8-1437047-7
60	636-6024ES	9-1437047-9

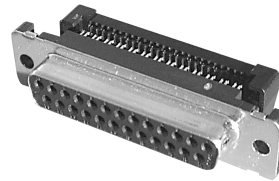
Standard Header Right Angle with Long Latches

No of Ways	Part Ref	Part No
10	636-1004ES	6-1437046-4
14	636-1404ES	8-1437046-0
16	636-1604ES	9-1437046-5
20	636-2004ES	0-1437047-9
26	636-2604ES	2-1437047-9
34	636-3404ES	4-1437047-7
40	636-4004ES	6-1437047-1
50	636-5004ES	7-1437047-8
60	636-6004ES	9-1437047-4

Complementary Products

AMP-Latch Metal IDC D Connectors

Shell material	Steel, Tin plated
Contact material	Phosphor Bronze
Contact area plating	0.76um Au
Colour	Black
Insulation material	Thermoplastic
Flammability	UL 94V-0
Current rating	1.25A
Insulation resistance	5 x 10 ⁹ Ω
Dielectric strength	>500V ac
Temperature rating	-55 to +105C



Metal Plug Connector

No of Ways	Part No
9	0-747306-4
15	0-747306-3
25	0-747306-2
37	0-747306-1
50	0-746790-1

Metal Socket Connector

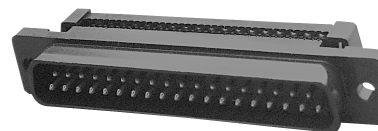
No of Ways	Part No
9	0-747303-4
15	0-747303-3
25	0-747303-2
37	0-747303-1
50	0-746789-1

Strain Relief

No of Ways	Part No
9	0-747275-4
15	0-747275-3
25	0-747275-2
37	0-747275-1
50	0-746785-1

AMP-Latch Plastic IDC D Connectors

Shell material	Thermoplastic
Contact material	Phosphor Bronze
Contact area plating	0.76um Au
Colour	Black
Insulation material	Thermoplastic
Flammability	UL 94V-0
Current rating	1.25A
Insulation resistance	5 x 10 ⁹ Ω
Dielectric strength	>500V ac
Temperature rating	-55 to +105C



Plastic Plug Connector

No of Ways	Part No
9	0-747321-4
15	0-747321-3
25	0-747321-2
37	0-747321-1

Plastic Socket Connector

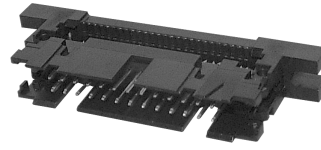
No of Ways	Part No
9	0-747318-4
15	0-747318-3
25	0-747318-2
37	0-747318-1

Strain Relief

No of Ways	Part No
9	0-747275-4
15	0-747275-3
25	0-747275-2
37	0-747275-1

AMP-Latch Cable Mounted Headers

Contact material	Phosphor Bronze
Contact area plating	0.76um Au
Colour	Black
Insulation material	Thermoplastic
Flammability	UL 94V-0
Current rating	1A
Insulation resistance	1 x 10 ⁹ Ω
Dielectric strength	1000V
Temperature rating	-55 to +105C



Cable Header Unlatched without Half Ears

No of Ways	Part No
10	0-111446-1
14	0-111446-2
16	0-111446-3
20	0-111446-4
26	0-111446-6
34	0-111446-8
40	0-111446-9
50	1-111446-1
60	1-111446-2

Cable Header Unlatched with Half Ears

No of Ways	Part No
10	0-111448-1
14	0-111448-2
16	0-111448-3
20	0-111448-4
26	0-111448-6
34	0-111448-8
40	0-111448-9
50	1-111448-1
60	1-111448-2

Cable Header with Long Latches and without Half Ears

No of Ways	Part No
10	0-111504-1
14	0-111504-2
16	0-111504-3
20	0-111504-4
26	0-111504-6
34	0-111504-8
40	0-111504-9
50	1-111504-1
60	1-111504-2

Cable Header with Long Latches and with Half Ears

No of Ways	Part No
10	0-111506-1
14	0-111506-2
16	0-111506-3
20	0-111506-4
26	0-111506-6
34	0-111506-8
40	0-111506-9
50	1-111506-1
60	1-111506-2

Additional Ranges

AMP-Latch Sockets

Contact material Phosphor Bronze
Contact area plating 0.2um Au
Colour Grey

Socket with Centre Polarisation

No of Ways	Part No
10	1-215911-0
14	1-215911-4
16	1-215911-6
20	2-215911-0
26	2-215911-6
34	3-215911-4
40	4-215911-0
50	5-215911-0
60	6-215911-0

Strain Relief

No of Ways	Part No
10	1-100103-0
14	1-100103-4
16	1-100103-6
20	2-100103-0
26	2-100103-6
34	3-100103-4
40	4-100103-0
50	5-100103-0
60	6-100103-0

AMP-Latch Box Headers

Contact material Brass
Contact area plating 0.2um Au
Colour Grey

Box Header Straight without Latches

No of Ways	Part No
10	0-281271-5
14	0-281272-5
16	0-281273-5
20	0-281274-5
26	0-281275-5
34	0-281276-5
40	0-281277-5
50	0-281278-5

Box Header Right Angle without Latches

No of Ways	Part No
10	0-281279-5
14	0-281280-5
16	0-281281-5
20	0-281282-5
26	0-281283-5
34	0-281284-5
40	0-281285-5
50	0-281286-5

AMP-Latch Standard Headers

Contact material Copper Alloy
Contact area plating 0.2um Au
Colour Grey

Standard Header Straight with Short Latches

No of Ways	Part No
10	1-284708-0
14	1-284708-4
16	1-284708-6
20	2-284708-0
26	2-284708-6
34	3-284708-4
40	4-284708-0
50	5-284708-0
60	6-284708-0

Standard Header Right Angle with Short Latches

No of Ways	Part No
10	1-284710-0
14	1-284710-4
16	1-284710-6
20	2-284710-0
26	2-284710-6
34	3-284710-4
40	4-284710-0
50	5-284710-0
60	6-284710-0

Standard Header Straight with Long Latches

No of Ways	Part No
10	1-284707-0
14	1-284707-4
16	1-284707-6
20	2-284707-0
26	2-284707-6
34	3-284707-4
40	4-284707-0
50	5-284707-0
60	6-284707-0

Standard Header Right Angle with Long Latches

No of Ways	Part No
10	1-284709-0
14	1-284709-4
16	1-284709-6
20	2-284709-0
26	2-284709-6
34	3-284709-4
40	4-284709-0
50	5-284709-0
60	6-284709-0

AMP-Latch Box Headers

Contact material Brass
 Contact area plating 0.2um Au
 Colour Black

Box Header Straight without Latches

No of Ways	Part No
10	0-281271-3
14	0-281272-3
16	0-281273-3
20	0-281274-3
26	0-281275-3
34	0-281276-3
40	0-281277-3
50	0-281278-3

Box Header Right Angle without Latches

No of Ways	Part No
10	0-281279-3
14	0-281280-3
16	0-281281-3
20	0-281282-3
26	0-281283-3
34	0-281284-3
40	0-281285-3
50	0-281286-3

AMP-Latch Standard Headers

Contact material Copper Alloy
 Contact area plating 0.2um Au
 Colour Black

Standard Header Straight with Short Latches

No of Ways	Part No
10	1-281521-0
14	1-281521-4
16	1-281521-6
20	2-281521-0
26	2-281521-6
34	3-281521-4
40	4-281521-0
50	5-281521-0
60	6-281521-0

Standard Header Right Angle with Short Latches

No of Ways	Part No
10	1-281525-0
14	1-281525-4
16	1-281525-6
20	2-281525-0
26	2-281525-6
34	3-281525-4
40	4-281525-0
50	5-281525-0
60	6-281525-0

Standard Header Straight with Long Latches

No of Ways	Part No
10	1-281519-0
14	1-281519-4
16	1-281519-6
20	2-281519-0
26	2-281519-6
34	3-281519-4
40	4-281519-0
50	5-281519-0
60	6-281519-0

Standard Header Right Angle with Long Latches

No of Ways	Part No
10	1-281523-0
14	1-281523-4
16	1-281523-6
20	2-281523-0
26	2-281523-6
34	3-281523-4
40	4-281523-0
50	5-281523-0
60	6-281523-0

AMP-Latch Standard Headers

Contact material Copper Alloy
Contact area plating 0.8um Au
Colour Black

Standard Header Straight with Short Latches

No of Ways	Part No
10	1-281522-0
14	1-281522-4
16	1-281522-6
20	2-281522-0
26	2-281522-6
34	3-281522-4
40	4-281522-0
50	5-281522-0
60	6-281522-0

Standard Header Right Angle with Short Latches

No of Ways	Part No
10	1-281526-0
14	1-281526-4
16	1-281526-6
20	2-281526-0
26	2-281526-6
34	3-281526-4
40	4-281526-0
50	5-281526-0
60	6-281526-0

Standard Header Straight with Long Latches

No of Ways	Part No
10	1-281520-0
14	1-281520-4
16	1-281520-6
20	2-281520-0
26	2-281520-6
34	3-281520-4
40	4-281520-0
50	5-281520-0
60	6-281520-0

Standard Header Right Angle with Long Latches

No of Ways	Part No
10	1-281524-0
14	1-281524-4
16	1-281524-6
20	2-281524-0
26	2-281524-6
34	3-281524-4
40	4-281524-0
50	5-281524-0
60	6-281524-0

The connectors listed in this guide are supported by a full range of application tooling and ribbon cable products. Please enquire for further details.

X-ON Electronics

Largest Supplier of Electrical and Electronic Components

Click to view similar products for te connectivity manufacturer:

Other Similar products are found below :

[570416-000](#) [CLTEQ-M81CE-SSRELAY-4-20V](#) [D38999/24FJ4AN](#) [358838-000](#) [4-1195131-0](#) [650069-000](#) [SMD100-2](#) [CB-1022B-78](#)
[RM707012](#) [RP410012](#) [MMS42](#) [1-640426-8](#) [2EDL4CM](#) [DTS20W19-11PD-3028-LC](#) [RM202615](#) [NC6-P104-06](#) [MSPS103B](#) [DTS26F21-41AE](#) [DTS26F21-41PE-LC](#) [DTS26F21-11SE-3028-LC](#) [1932144-1](#) [293545-4](#) [LVR125S](#) [MS27466T25F4PB](#) [CKB-38-78010](#)
[1206SFF150F/63-2](#) [D38999/20JB35HA](#) [D38999/24WJ20PA](#) [1754138-1](#) [TE1500A2R2J](#) [DTS24F25-29PC-3028-LC](#) [D38999/24WG11HA](#)
[D38999/24WG11HN](#) [MS27467T21F11H](#) [DJT16E21-11HA](#) [1206SFH150F/24-2](#) [DTS24F19-11SC-3028-LC](#) [DTS24F21-41HN-LC](#)
[DTS24F21-41AN](#) [DTS24F21-41PN-LC](#) [RP330024](#) [MS27467T21F35J](#) [MS27467T21F11J](#) [MS27467T21F16H-LC](#) [MS27467T21F35H](#)
[MS27467T21F41H-LC](#) [DJT16E21-11PA-LC](#) [DJT16E21-11HA-LC](#) [DJT16E21-11AA](#) [MS27467T21B11JA](#)