



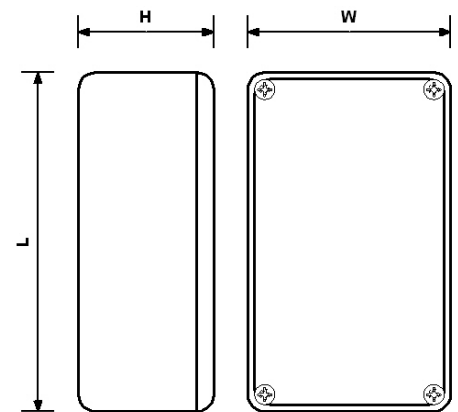
The 2000 series of multi-purpose boxes are manufactured in ABS plastic. They are available in a wide range of sizes, can be easily drilled and withstand temperatures up to 85 deg C. Also available with an RFI coating.

Available as standard in **Grey, Black, White, Orange** and **Blue**. Other colours can be specified but are subject to a minimum order quantity. **Flame Retardent** UL94-V0 material is available in most sizes, with the available colours listed in the table below. **Clear lids** available upon request.

Board Adaptors are supplied with each box, which enable PCB's to be mounted horizontally.

The lids of the 2000 series have a close fitting flanged profile which is secured to the base by screws running into integral bosses.

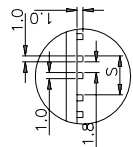
Part No.	Dimension (mm)			Flame Retardent Colours UL94-V0
	W	H	L	
2000/10	50	27	75	Grey + White
2001/11	56	40	85	White
2002/12	50	25	100	Grey + White
2003/13	62	31	112	White
2004/14	65	40	120	Grey + White
2005/15	80	50	150	White
2006/16	110	60	190	Grey + White
2007/17	62	31	112	White
2008/18	55	42	55	Grey + White
2009/19	200	65	240	N/A
2030/30	80	30	142	N/A



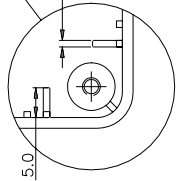
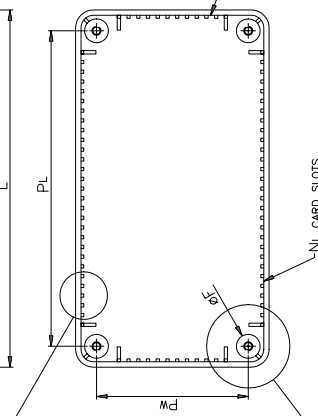
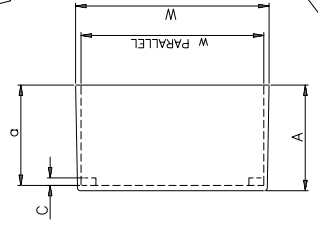
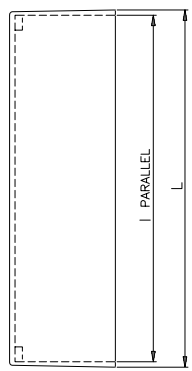
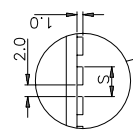
To order, specify as following example: Part No 2002/12 White / RFI

All specifications are subject to change without notice.

TYPE 1



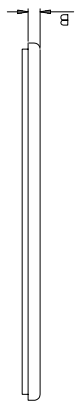
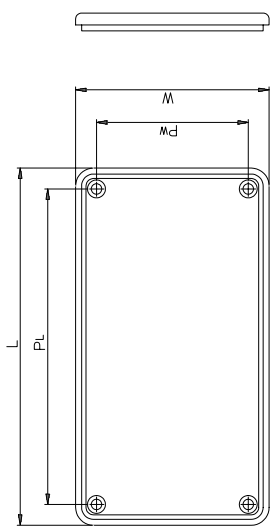
TYPE 2



RIB DETAIL REMOVED FOR CLARITY

BOX

GENERAL TOLERANCE ±0.2



STANDARD LID

2000-STANDARD

Part No.	External			Internal			A	a	B	Stand off C	Type	Card Guide Slots			P
	L	W	H	<i>l</i>	<i>w</i>	<i>h</i>						S	N _L	N _w	
BIM-2000/10	75	50	27	71.4	46.4	22.4	25	23.2	2	---	1	6.60	6	3	6
BIM-2001/11	85	56	37	81.4	52.4	32.4	35	33.2	2	---	1	6.60	9	5	7
BIM-2002/12	100	50	25	96.4	46.4	21.4	21	19.2	4	2.5	2	5.05	14	4	8
BIM-2003/13	112	62	31	108.4	58.4	27.4	27	25.2	4	2.5	2	5.00	17	7	9
BIM-2004/14	120	65	40	116.4	61.4	36.2	36	34.0	4	2.5	2	3.25	28	11	1
BIM-2005/15	150	80	50	146.4	76.4	46.5	46	44.3	4	2.5	2	5.00	24	10	1
BIM-2006/16	190	110	60	186.4	106.4	56.7	56	54.5	4	2.5	2	5.00	14 x 2	16	2 x
BIM-2007/17	112	62	31	107.4	57.4	27	27	24.8	4	---	---	---	---	---	1
BIM-2008/18	55	55	42	51.0	51.0	37.1	40	37.9	2	---	2	3.25	12	12	4
BIM-2009/19	250	200	64	244.0	194.0	59.4	60	57.2	4	2.5	2	3.25	2 x 31	2 x 24	2 x
BIM-2030/30	144	82	30	139.6	78.0	25.3	15	12.8	15	---	---	---	---	---	1

The information contained in this sheet is the property and copyright of Boss Enclosures Ltd.
 It must be read in conjunction with drawing file 2000-STANDARD.dxf.
 Boss Enclosures accept NO liability resulting from its mis-interpretation or use.

X-ON Electronics

Largest Supplier of Electrical and Electronic Components

Click to view similar products for [camden manufacturer](#):

Other Similar products are found below :

[412689X](#) [CTBP92VE/12R](#) [CTBP9350/12](#) [IND515205-240-T/GRN](#) [IND515205-240-T/RD](#) [IND5032405-240-T/GRN](#) [CE10.00.EI](#)
[C192SHAND](#) [CNMB/6ST/2](#) [CNMB/4ST/2](#) [CSACST004](#) [CTBP9200/9](#) [CIME/M/BE2250SS](#) [CHH64E1BL](#) [CIM/15W-DMFS](#) [CHHBAT2GY](#)
[CFTBN/2](#) [CCB2S1/04](#) [CHDX6-221C](#) [CHDX8-224](#) [CHDASMP29](#) [CHDASMP30](#) [CHDASMP34](#) [CHDX810DD](#) [CHDX811DD](#)
[CCTTM40LR](#) [CTBP92VJ/5S](#) [CTBP92VJ/8R](#) [CTSN431/12/M](#) [CTSN433/12/M](#) [CUABOX006](#) [CE10.00.FM](#) [CBRPH-BLK](#) [BIM2003/13-](#)
[WH/WH](#) [RX2008/S-5-WH](#) [CBARD-CAR](#) [CRDCG0007](#) [CNMB/4/KIT](#) [CTB5050/5](#) [CTBP92HE/11](#) [CTBP9358/10AO](#) [CHH66C2GY](#)
[CHH456PBK](#) [CHH451ABK](#) [CIM/9W-DMFS](#) [CIM/25W-DMFS](#) [RTM5006/16-NC-BLK](#) [IND5032405-125-T/AMB](#) [CCB1S1/03](#) [CCD2S1/04](#)