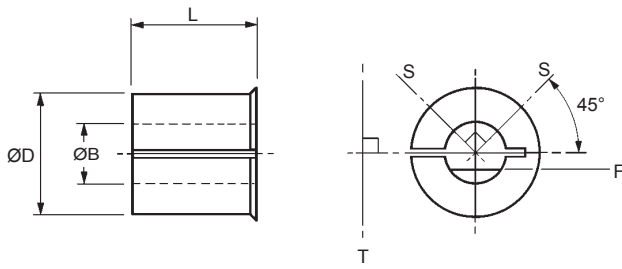


HUCO-LOK METALLIC (NON-INSULATING) & GLASS-FIBRE (INSULATING) BORE ADAPTORS



Bore For optimum fastening, install HUCO-LOK bore adaptors as shown.

'S' represents screws in set screw hub.

'T' represents tangential screw in clamp hub.

'F' shows recommended orientation of flattened shaft in set screw hub.

Note that both traction and concentricity may be affected when using an adaptor. For best results shafts with h6 tolerance or better, are recommended. Undersized shafts become progressively less effective. For similar reasons, flattened shafts with more than 1/4 of their diameter removed are not recommended.

MAIN TABLE - DIMENSIONS & ORDER CODES

Cat ref.	251	253	*254	255	257	259	260	261	262	263
ØD	5	6.35	8	8	10	12.7	16	20	25.4	28
L	4.3	6.6	5.8	8.1	8.1	10.7	13.2	20	20	25
to fit bores coded	20	24	28	28	32	36	42	48	53	54
minor ØB	Adaptor ref.									
2	251.11	253.11								
3	251.14	253.14	254.14	255.14						
3.048	251.15	253.15	254.15	255.15						
3.175	251.16	253.16	254.16	255.16						
4	251.18	253.18	254.18	255.18	257.18					
4.763		253.19	254.19	255.19	257.19					
5		253.20	254.20	255.20	257.20	259.20				
6			254.22	255.22	257.22	259.22	260.22			
6.350					257.24	259.24	260.24			
7					257.25	259.25	260.25			
7.938					257.27	259.27	260.27	261.27		
8					257.28	259.28	260.28	261.28		
9						259.30	260.30	261.30		
9.525						259.31	260.31	261.31	262.31	
10						259.32	260.32	261.32	262.32	
11							260.33	261.33	262.33	
12							260.35	261.35	262.35	263.35
12.700							260.36	261.36	262.36	263.36
14							260.38	261.38	262.38	263.38
15								261.40	262.40	263.40
15.875								261.41	262.41	263.41
16								261.42	262.42	263.42
18								261.45	262.45	263.45
19									262.46	263.46
19.050									262.47	263.47
20									262.48	263.48
22									262.49	263.49
22.225									262.50	263.50
24										263.51
25										263.52
25.400										263.53
material	brass					al. alloy				

Major diameter D is toleranced $-0.013 / -0.050\text{mm}$

Minor diameter B is toleranced $+0.03 / -0\text{mm}$

* Short adaptor 254 is used with couplers as indicated in the standard bores tables. Use 255 for all other 8mm bores.

HOW TO ORDER

253.18

Adaptor ref.

Minor ØB ref.

An identical range is manufactured in glass-fibre to provide electrical isolation between shafts in all-metal couplers, i.e. Flex M & Flex B.

253G18

Adaptor ref.

Minor ØB ref.

X-ON Electronics

Largest Supplier of Electrical and Electronic Components

Click to view similar products for [huco manufacturer](#):

Other Similar products are found below :

[232P13.20.F](#) [236P13.F](#) [724.13.2020](#) [104221601FAR](#) [724.19.2020](#) [453P19.22.F](#) [466P33.3232.F](#) [104283601FAR](#) [232P13.24.F](#) [724.19.2222](#)
[101281040FAR](#) [236P25.F](#) [207P18.2222.F](#) [236P19.F](#) [725.25.3232](#) [271P.25.28.F](#) [101281080FAR](#) [725.19.2020](#) [101281030FAR](#) [035940X](#)
[403374X](#) [403383H](#) [403378B](#) [HSL.4070.08](#) [403369D](#) [035943E](#) [HSL3050.15](#) [035939H](#) [403382X](#) [HSL3050.30](#) [403376F](#) [035938X](#)
[HSL3050.12](#) [HSL3050.08](#) [403381A](#) [403384F](#) [HSL3050.20](#) [403379X](#) [453P19.20.F](#) [HSL3050.05](#) [HTLP3050-14](#) [HSL3050.10](#) [035936C](#)
[035937A](#) [HSL3050.25](#) [HSL3050.06](#) [403375H](#)