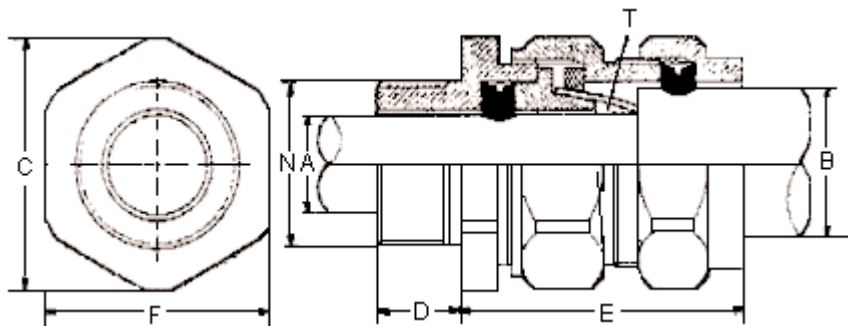


**REVISIONS**

ECN #	REV	DESCRIPTION	DRAWN	DATE	CHECKD	DATE	APPRVD	DATE
-	A	RELEASED	SID	18/6/12	AMU	18/6/12		02/7/12



Dimensions : Millimetres

**Application:**

Outdoor or indoor requirement for all SWA applications provides for armour clamp and seal on outer sheath of cable

**Specification Table**

Description	Entry Thread		Cable Acceptance Details					Hexagonal Details		Assembled Length 'E'	Part Number	
	Diameter 'N'	Length 'A'	Diameter 'A'		Diameter 'B'		Armour Wire Size 'T'	A / F 'F'	A / C 'C'			
			Minimum	Maximum	Minimum	Maximum						
Cable Gland, Indoor, 15.8 mm, PK2	20	10	8	11.8	12.9	15.8	0.9 / 1.25	24	26.6	40	DAVBW20S	
Cable Gland, Indoor, 20.8 mm, PK2			11	13.8	15.5	20.8		30	33.3	41	DAVBW20	
Cable Gland, Indoor, 27.2 mm, PK2	25		13	19.8	20.3	27.5	1.25 / 1.6	36	39.9	44	DAVBW25	
Cable Gland, Outdoor, 20.8 mm, PK2	25		11	13.8	15.5	20.8	0.9 / 1.25			30	41	DAVCW20
Cable Gland, Outdoor, 27.2 mm, PK2			13	19.8	20.3	27.5	1.25 / 1.6			36	44	DAVCW25

Dimensions : Millimetres

www.element14.com  
www.farnell.com  
www.newark.com  
www.cpc.co.uk

**Important Notice:** This data sheet and its contents (the "Information") belong to the Premier Farnell Group (the "Group") or are licensed to it. No licence is granted for the use of it other than for information purposes in connection with the products to which it relates. No licence of any intellectual property rights is granted. The Information is subject to change without notice and replaces all data sheets previously supplied. The Information supplied is believed to be accurate but the Group assumes no responsibility for its accuracy or completeness, any error in or omission from it or for any use made of it. Users of this data sheet should check for themselves the Information and the suitability of the products for their purpose and not make any assumptions based on information included or omitted. Liability for loss or damage resulting from any reliance on the Information or use of it (including liability resulting from negligence or where the Group was aware of the possibility of such loss or damage arising) is excluded. This will not operate to limit or restrict the Group's liability for death or personal injury resulting from its negligence. Pro-POWER is the registered trademark of the Group. © Premier Farnell plc 2012.

**TOLERANCES:**  
**UNLESS OTHERWISE SPECIFIED, DIMENSIONS ARE FOR REFERENCE PURPOSES ONLY.**

<b>DRAWN BY:</b>	<b>DATE:</b>
SID	18/06/12
<b>CHECKED BY:</b>	<b>DATE:</b>
AMU	18/06/12
<b>APPROVED BY:</b>	<b>DATE:</b>
	02/07/12

<b>DRAWING TITLE:</b>			
<b>Cable Gland - Indoor and Outdoor</b>			
<b>SIZE</b>	<b>DWG NO.</b>	<b>ELECTRONIC FILE</b>	<b>REV</b>
A	P10002177	53352_DWG	A
<b>SCALE: NTS</b>		<b>U.O.M.: mm</b>	<b>SHEET: 1 OF 1</b>

## **X-ON Electronics**

Authorized Distributor

*Click to view similar products for [Pro Power manufacturer](#).*

Other Similar products are found below :

[PPCY4C075100M](#) [PPCY3C10050M](#) [PPC217](#) [PP001328](#) [PP001316](#) [PP001109](#) [PP001088](#) [PP000940](#) [PP030](#) [PP000909](#)  
[PP001326](#) [PP001308](#) [PP000877](#) [PP000868](#) [PP000704](#) [PP001163](#) [PP001156](#) [PP001085](#) [PP000510](#) [PP001076](#) [PP000944](#)  
[PP000914](#) [PP000407](#) [PP000386](#) [PP000870](#)