

# SKM 22GD123D



**SEMITRANS® 6**

## IGBT modules

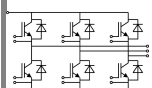
**SKM 22GD123D**

### Features

- MOS input (voltage controlled)
- N channel, homogeneous Si
- Low inductance case
- Very low tail current with low temperature dependence
- High short circuit capability, self limiting to  $6 \times I_{Cnom}$
- Latch-up free
- Fast & soft inverse CAL diodes
- Isolated copper baseplate using DCB Direct Copper Bonding Technology
- Large clearance (9 mm) and creepage distances (13 mm)

### Typical Applications\*

- Switched mode power supplies
- Three phase inverters for AC motor speed control
- General power switching applications
- Pulse frequencies also above 15 kHz



GD

Absolute Maximum Ratings		$T_c = 25^\circ\text{C}$ , unless otherwise specified			
Symbol	Conditions	Values			Units
<b>IGBT</b>					
$V_{CES}$	$T_j = 25^\circ\text{C}$	1200			V
$I_C$	$T_j = 150^\circ\text{C}$	$T_{case} = 25^\circ\text{C}$	25		A
		$T_{case} = 80^\circ\text{C}$	15		A
$I_{CRM}$	$I_{CRM} = 2 \times I_{Cnom}$	50			A
$V_{GES}$		$\pm 20$			V
$t_{psc}$	$V_{CC} = 600\text{ V}; V_{GE} \leq 20\text{ V}; T_j = 125^\circ\text{C}$ $V_{CES} < 1200\text{ V}$	10			$\mu\text{s}$
<b>Inverse Diode</b>					
$I_F$	$T_j = 150^\circ\text{C}$	$T_{case} = 25^\circ\text{C}$	25		A
		$T_{case} = 80^\circ\text{C}$	15		A
$I_{FRM}$	$I_{FRM} = 2 \times I_{Fnom}$	50			A
$I_{FSM}$	$t_p = 10\text{ ms}; \sin.$	$T_j = 150^\circ\text{C}$	200		A
<b>Module</b>					
$I_{t(RMS)}$		100			A
$T_{vj}$		- 40 ... + 175			$^\circ\text{C}$
$T_{stg}$		- 40...+ 125			$^\circ\text{C}$
$V_{isol}$	AC, 1 min.	2500			V

Characteristics		$T_c = 25^\circ\text{C}$ , unless otherwise specified			
Symbol	Conditions	min.	typ.	max.	Units
<b>IGBT</b>					
$V_{GE(th)}$	$V_{GE} = V_{CE}, I_C = 1\text{ mA}$	4,5	5,5	6,5	V
$I_{CES}$	$V_{GE} = 0\text{ V}, V_{CE} = V_{CES}$		0,3	0,9	mA
$V_{CE0}$		$T_j = 25^\circ\text{C}$	1,4	1,6	V
		$T_j = 125^\circ\text{C}$	1,6	1,8	V
$r_{CE}$	$V_{GE} = 15\text{ V}$	$T_j = 25^\circ\text{C}$	73,33	93,33	$\text{m}\Omega$
		$T_j = 125^\circ\text{C}$	100	126,66	$\text{m}\Omega$
$V_{CE(sat)}$	$I_{Cnom} = 15\text{ A}, V_{GE} = 15\text{ V}$	$T_j = ^\circ\text{C}_{chiplev.}$	2,5	3	V
$C_{ies}$	$V_{CE} = 25, V_{GE} = 0\text{ V}$	$f = 1\text{ MHz}$	1		nF
$C_{oes}$			0,15		nF
$C_{res}$			0,07		nF
$t_{d(on)}$	$R_{Gon} = 52\ \Omega$	$V_{CC} = 600\text{V}$ $I_C = 25\text{A}$	40		ns
$t_r$			35		ns
$E_{on}$	$R_{Goff} = 52\ \Omega$	$T_j = 125^\circ\text{C}$ $V_{GE} = -15\text{V}$	2		mJ
$t_{d(off)}$			350		ns
$t_f$			70		ns
$E_{off}$			1,4		mJ
$R_{th(j-c)}$	per IGBT		0,86		K/W



**SEMITRANS® 6**

## IGBT modules

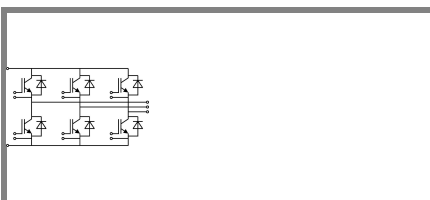
**SKM 22GD123D**

### Features

- MOS input (voltage controlled)
- N channel, homogeneous Si
- Low inductance case
- Very low tail current with low temperature dependence
- High short circuit capability, self limiting to  $6 \times I_{cnom}$
- Latch-up free
- Fast & soft inverse CAL diodes
- Isolated copper baseplate using DCB Direct Copper Bonding Technology
- Large clearance (9 mm) and creepage distances (13 mm)

### Typical Applications\*

- Switched mode power supplies
- Three phase inverters for AC motor speed control
- General power switching applications
- Pulse frequencies also above 15 kHz



**GD**

Characteristics		min.	typ.	max.	Units
<b>Symbol</b>	<b>Conditions</b>				
<b>Inverse Diode</b>					
$V_F = V_{EC}$	$I_{Fnom} = 15 \text{ A}; V_{GE} = 0 \text{ V}$		2	2,5	V
			1,8		V
$V_{F0}$			1,1	1,2	V
					V
$r_F$			60	87	mΩ
					mΩ
$I_{RRM}$	$I_F = 15 \text{ A}$		16		A
$Q_{rr}$			2,7		μC
$E_{rr}$	$V_{GE} = 0 \text{ V}; V_{CC} = 600 \text{ V}$		0,95		mJ
$R_{th(j-c)D}$	per diode			1,5	K/W
<b>Module</b>					
$L_{CE}$				60	nH
$R_{th(c-s)}$	per module			0,05	K/W
$M_s$	to heat sink M5	4		5	Nm
w				175	g

This is an electrostatic discharge sensitive device (ESDS), international standard IEC 60747-1, Chapter IX.

\* The specifications of our components may not be considered as an assurance of component characteristics. Components have to be tested for the respective application. Adjustments may be necessary. The use of SEMIKRON products in life support appliances and systems is subject to prior specification and written approval by SEMIKRON. We therefore strongly recommend prior consultation of our personal.

# SKM 22GD123D



**SEMITRANS® 6**

## IGBT modules

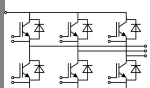
**SKM 22GD123D**

### Features

- MOS input (voltage controlled)
- N channel, homogeneous Si
- Low inductance case
- Very low tail current with low temperature dependence
- High short circuit capability, self limiting to  $6 \times I_{cnom}$
- Latch-up free
- Fast & soft inverse CAL diodes
- Isolated copper baseplate using DCB Direct Copper Bonding Technology
- Large clearance (9 mm) and creepage distances (13 mm)

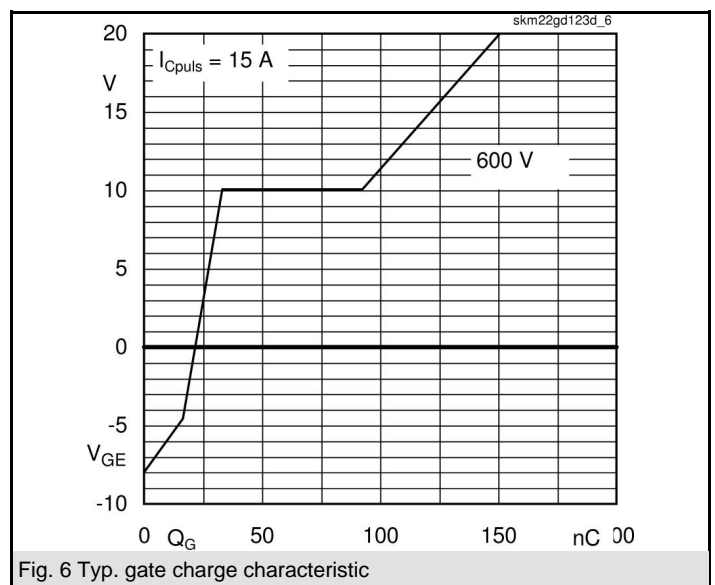
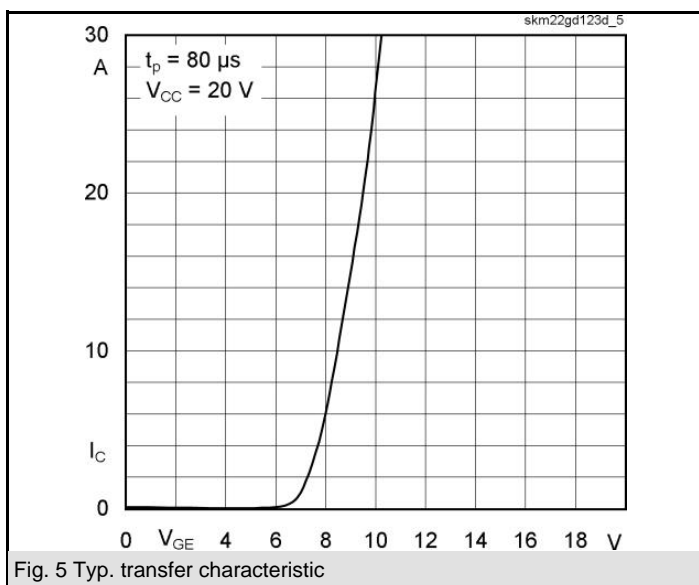
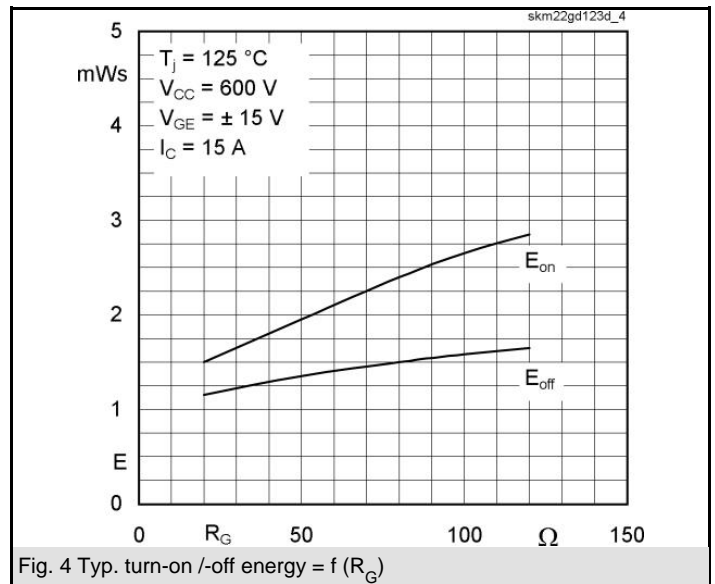
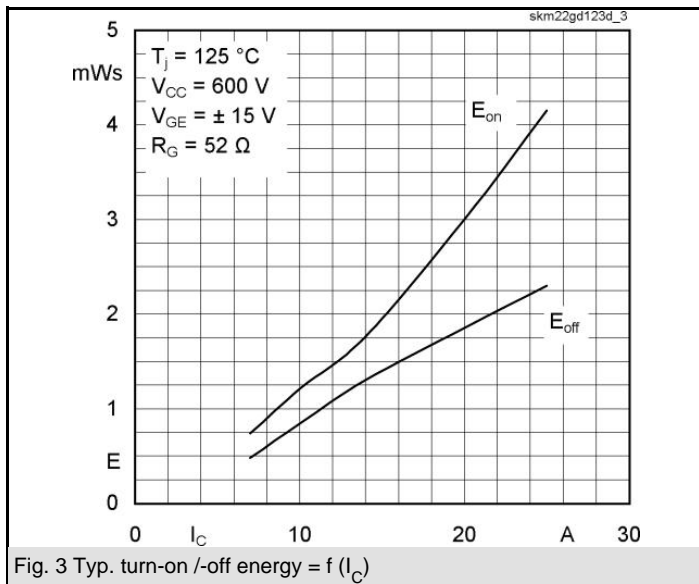
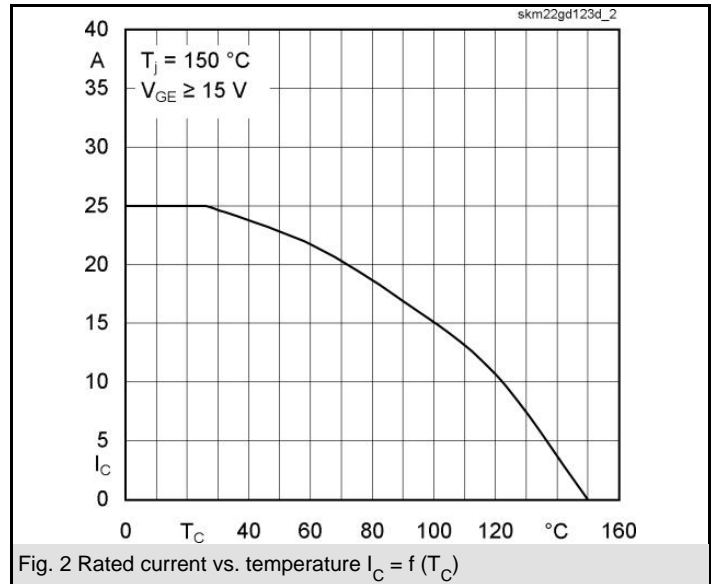
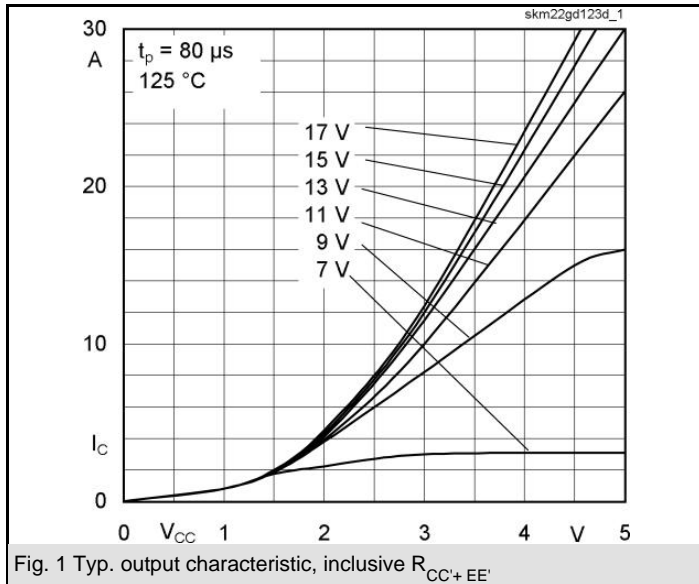
### Typical Applications\*

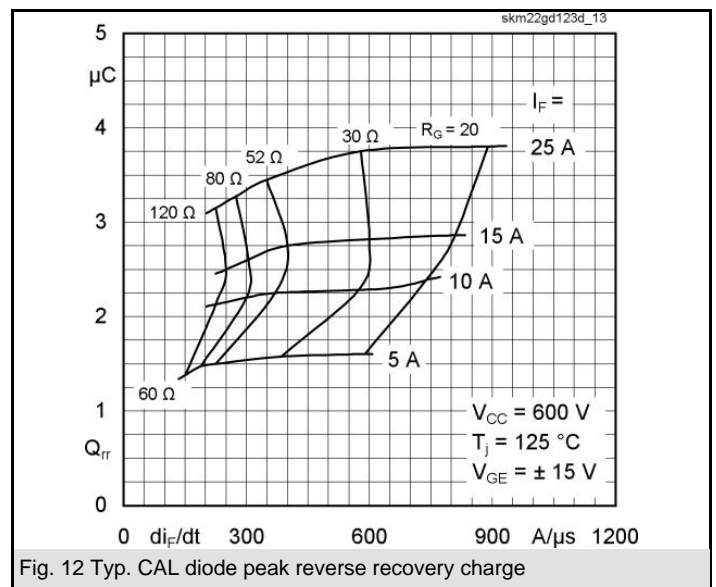
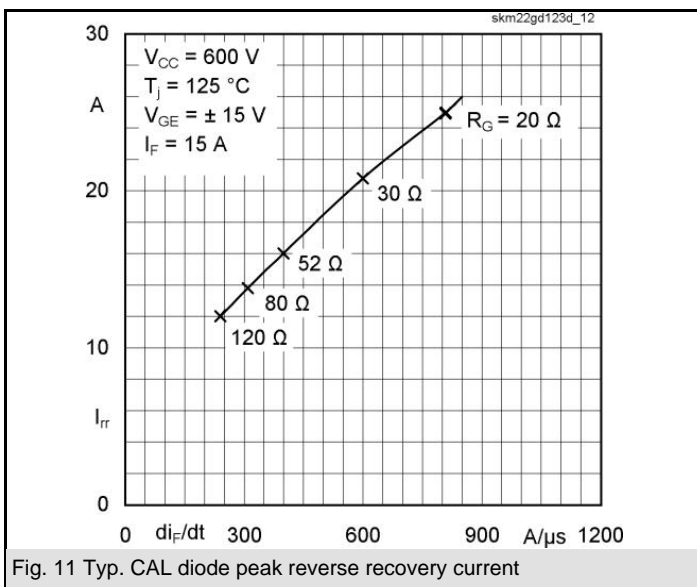
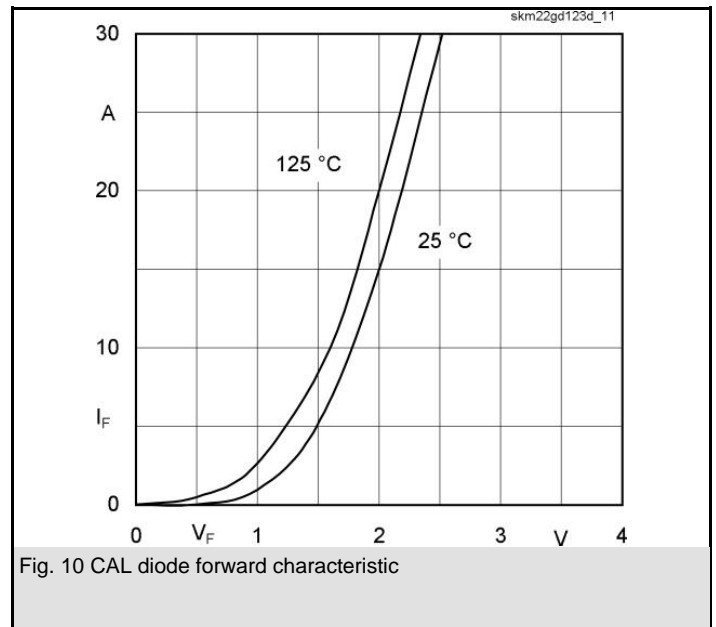
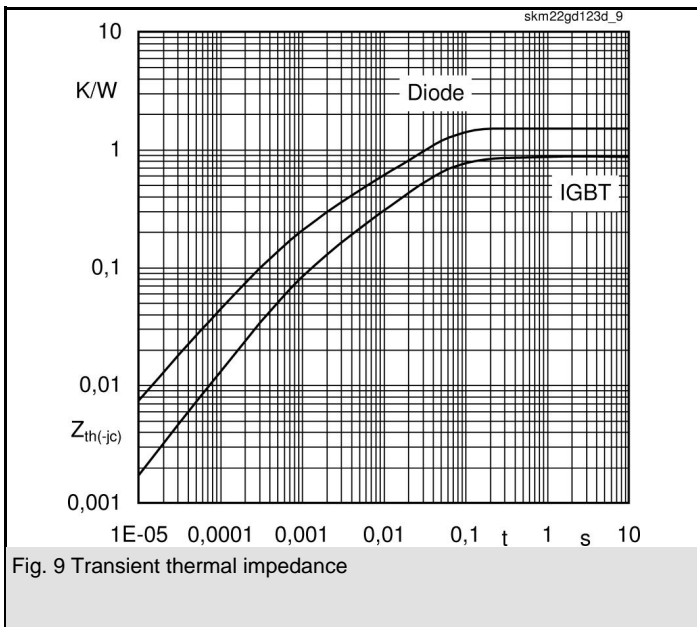
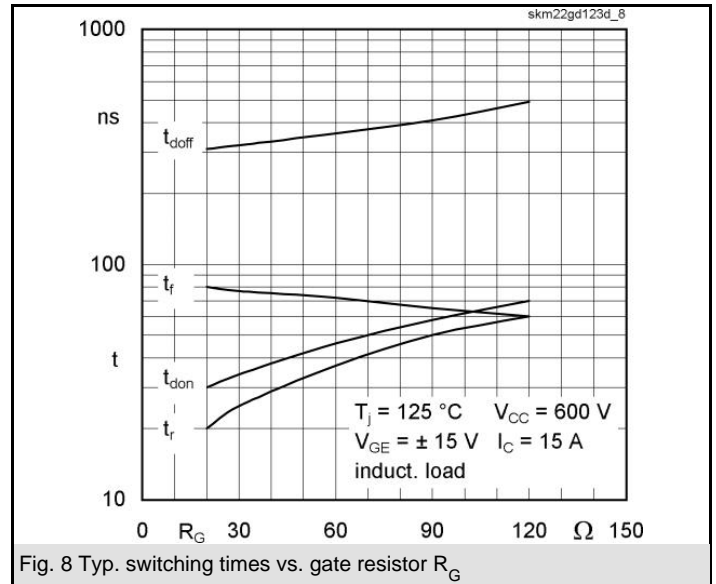
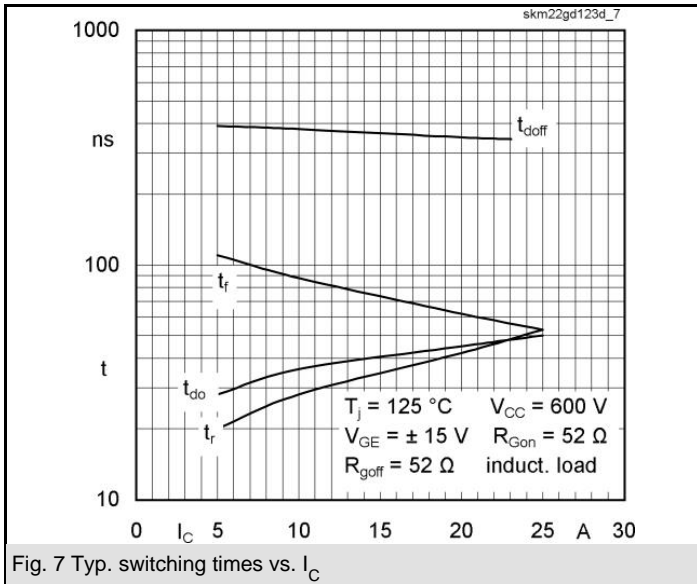
- Switched mode power supplies
- Three phase inverters for AC motor speed control
- General power switching applications
- Pulse frequencies also above 15 kHz



**GD**

$Z_{th}$		Conditions	Values	Units
<b>Symbol</b>				
$Z_{th(j-c)I}$				
$R_{\theta j-c}$	$i = 1$		560	mk/W
$R_{\theta j-c}$	$i = 2$		220	mk/W
$R_{\theta j-c}$	$i = 3$		67	mk/W
$R_{\theta j-c}$	$i = 4$		13	mk/W
$\tau_{th(j-c)}$	$i = 1$		0,056	s
$\tau_{th(j-c)}$	$i = 2$		0,0078	s
$\tau_{th(j-c)}$	$i = 3$		0,017	s
$\tau_{th(j-c)}$	$i = 4$		0,0001	s
$Z_{th(j-c)D}$				
$R_{\theta j-c}$	$i = 1$		800	mk/W
$R_{\theta j-c}$	$i = 2$		400	mk/W
$R_{\theta j-c}$	$i = 3$		270	mk/W
$R_{\theta j-c}$	$i = 4$		30	mk/W
$\tau_{th(j-c)}$	$i = 1$		0,0761	s
$\tau_{th(j-c)}$	$i = 2$		0,0013	s
$\tau_{th(j-c)}$	$i = 3$		0,011	s
$\tau_{th(j-c)}$	$i = 4$		0,002	s



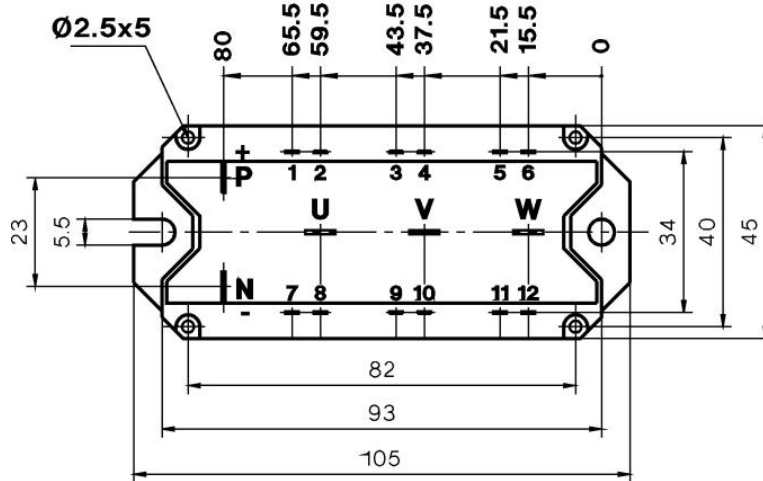
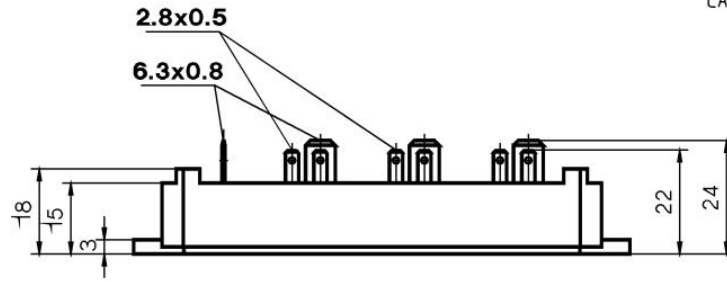


# SKM 22GD123D

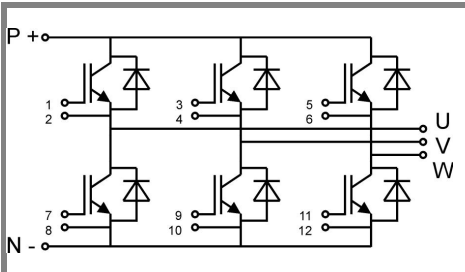
UL Recognized

CASED67

File 63 532



Case D 67



GD

Case D 67

## X-ON Electronics

Largest Supplier of Electrical and Electronic Components

*Click to view similar products for [semikron](#) manufacturer:*

Other Similar products are found below :

[SKD 60/12](#) [SKKT 42B12 E](#) [SKM200GB12T4](#) [SKR 130/14](#) [SKCH 40/16](#) [SKD 30/04A1](#) [SKKD 26/14](#) [SKKT 162/16 E](#) [SKKT 92/18E](#)  
[SKYPER 32 R](#) [SKKH 27/16E](#) [SKKD 380/16](#) [SKD 110/08](#) [SKD 62/12](#) [SKIIP 36NAB126V1 M20](#) [SKKD 162/20H4](#) [SKKD 380/08](#) [SKKH](#)  
[72/20E H4](#) [SKKT 250/12E](#) [SKN71/02](#) [SKN 100/12](#) [SKN 100/14](#) [SKR 100/08](#) [SKIIP 24AC12T4V1 M20](#) [SKIIP 28AHB16V1 M20](#) [SKIIP](#)  
[35NAB126V10 M20](#) [SKKH 570/16E](#) [SKKE 380/16](#) [SKR 130/18](#) [SK 45 UT 16](#) [SKKT 570/18E](#) [SKN 130/14](#) [SKPC200-240](#) [SKPC100Z-440](#)  
[SK 100 WT 12](#) [SK 25 UT 12](#) [SKR70/04](#) [SKD35/16](#) [SKKT 42/08E](#) [SKCH 40/08](#) [SKD 62/18](#) [SKD 82/08](#) [SKIIP 23NAB126V1 M20](#) [SKKQ](#)  
[1200/14E](#) [SKR 60F12](#) [SKR 100/04](#) [SKR 100/14](#) [SKIIP 37AC12T4V1 M20](#) [SKD 60/16](#) [SKD 62/08](#)