

- 50 - 1600VA
- 230 or 400V ±5% primary
- 24 - 110 - 230V secondary
- Designed to EN 60742
- CE marked
- Isolation to T40/B
- Dip impregnated
- Add-on primary fuse - optional
- Add-on earth terminal - optional
- UL, CSA approvals



## Selection and product pricing

Rating VA	Primary Volts 230 ±5%			Primary Volts 400 ±5%			
	Secondary Volts	Primary Fuse Optional	Product Code	Secondary Volts	Primary Fuse Optional	Product Code	
50	24	0.40A	MTSN-P-50-230-024	24	0.16A	MTSN-P-50-400-024	
	110	0.40A	MTSN-P-50-230-110	110	0.16A	MTSN-P-50-400-110	
	230	0.40A	MTSN-P-50-230-230	230	0.16A	MTSN-P-50-400-230	
63	24	0.40A	MTSN-P-63-230-024	24	0.25A	MTSN-P-63-400-024	
	110	0.40A	MTSN-P-63-230-110	110	0.25A	MTSN-P-63-400-110	
	230	0.40A	MTSN-P-63-230-230	230	0.25A	MTSN-P-63-400-230	
100	24	0.63A	MTSN-P-100-230-024	24	0.40A	MTSN-P-100-400-024	
	110	0.63A	MTSN-P-100-230-110	110	0.40A	MTSN-P-100-400-110	
	230	0.63A	MTSN-P-100-230-230	230	0.40A	MTSN-P-100-400-230	
160	24	1.00A	MTSN-P-160-230-024	24	0.63A	MTSN-P-160-400-024	
	110	1.00A	MTSN-P-160-230-110	110	0.63A	MTSN-P-160-400-110	
	230	1.00A	MTSN-P-160-230-230	230	0.63A	MTSN-P-160-400-230	
250	24	1.60A	MTSN-P-250-230-024	24	1.00A	MTSN-P-250-400-024	
	110	1.60A	MTSN-P-250-230-110	110	1.00A	MTSN-P-250-400-110	
	230	1.60A	MTSN-P-250-230-230	230	1.00A	MTSN-P-250-400-230	
400	24	2.50A	MTSN-P-400-230-024	24	1.60A	MTSN-P-400-400-024	
	110	2.50A	MTSN-P-400-230-110	110	1.60A	MTSN-P-400-400-110	
	230	2.50A	MTSN-P-400-230-230	230	1.60A	MTSN-P-400-400-230	
500	24	3.15A	MTSN-P-500-230-024	24	2.00A	MTSN-P-500-400-024	
	110	3.15A	MTSN-P-500-230-110	110	2.00A	MTSN-P-500-400-110	
	230	3.15A	MTSN-P-500-230-230	230	2.00A	MTSN-P-500-400-230	
800	24	5.0A	MTSN-P-800-230-024	24	3.15A	MTSN-P-800-400-024	
	110	5.0A	MTSN-P-800-230-110	110	3.15A	MTSN-P-800-400-110	
	230	5.0A	MTSN-P-800-230-230	230	3.15A	MTSN-P-800-400-230	
1000	24	6.3A	MTSN-P-1000-230-024	24	4.0A	MTSN-P-1000-400-024	
	110	6.3A	MTSN-P-1000-230-110	110	4.0A	MTSN-P-1000-400-110	
	230	6.3A	MTSN-P-1000-230-230	230	4.0A	MTSN-P-1000-400-230	
1300	24	8.0A	MTSN-P-1300-230-024	24	5.0A	MTSN-P-1300-400-024	
	110	8.0A	MTSN-P-1300-230-110	110	5.0A	MTSN-P-1300-400-110	
	230	8.0A	MTSN-P-1300-230-230	230	5.0A	MTSN-P-1300-400-230	
1600	24	10.0A	MTSN-P-1600-230-024	24	6.3A	MTSN-P-1600-400-024	
	110	10.0A	MTSN-P-1600-230-110	110	6.3A	MTSN-P-1600-400-110	
	230	10.0A	MTSN-P-1600-230-230	230	6.3A	MTSN-P-1600-400-230	

## Accessories

### Add-on Primary Fuse

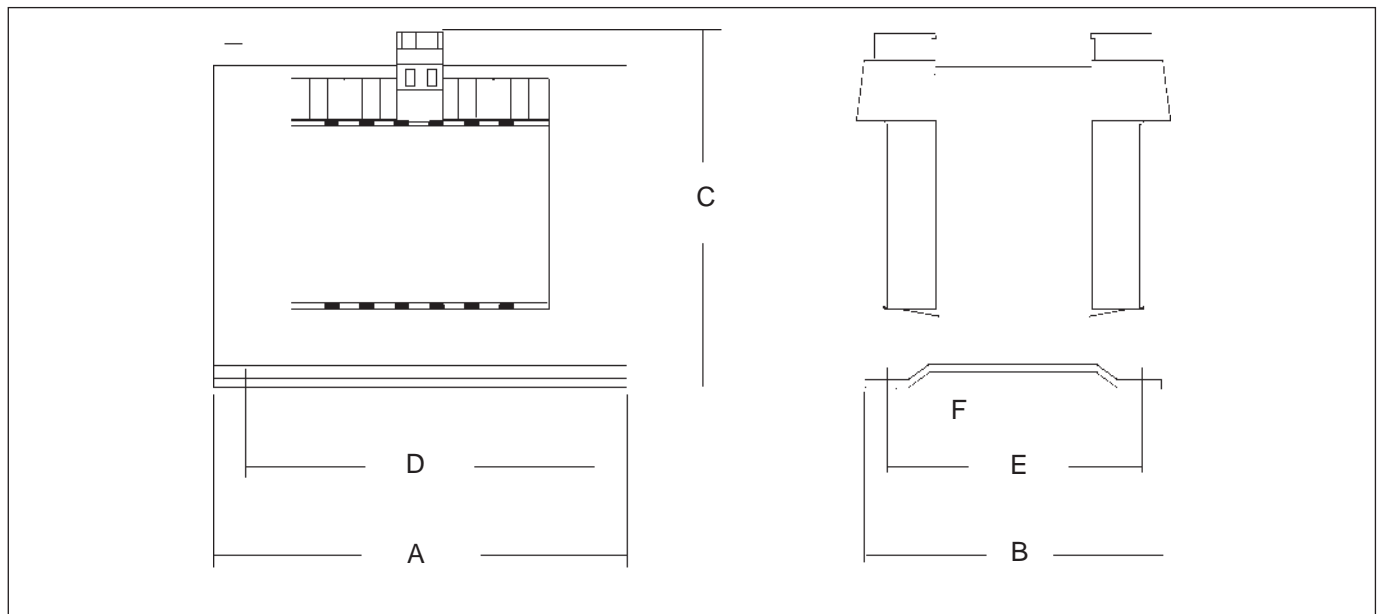
MTSN (+fuse rating)

### Add-on Earth Terminal

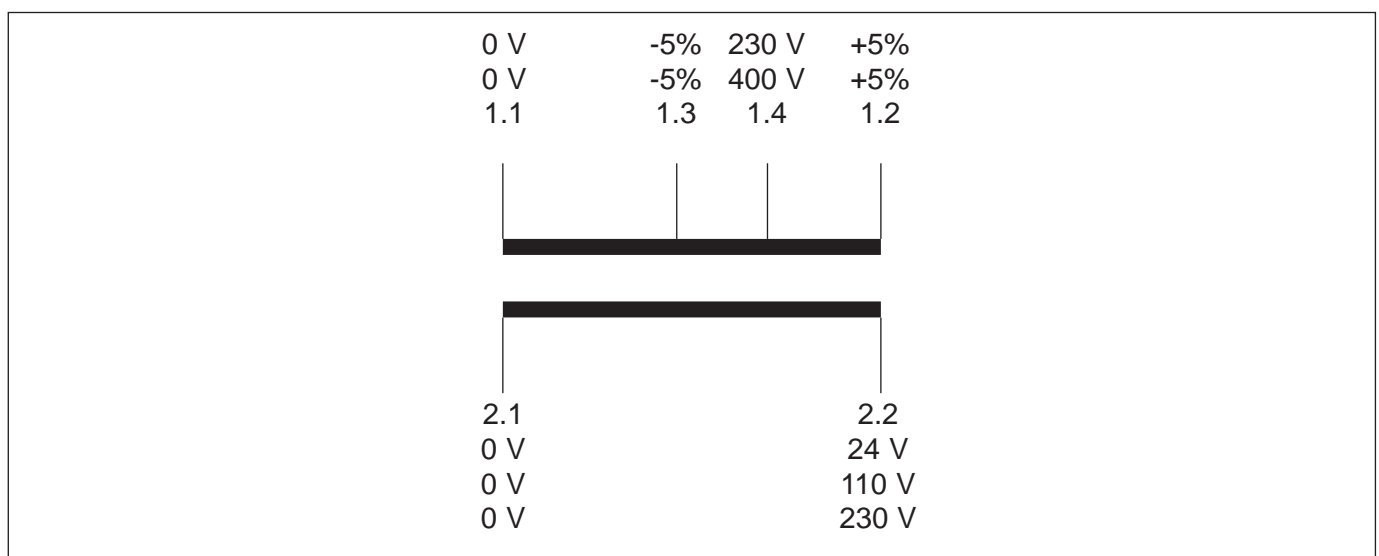
MTSN-EARTH

### Dimensions (mm)

Dimensions (mm)	VA Rating										
	50	63	100	160	250	400	500	800	1000	1300	1600
<b>A</b>	66	78	84	96	96	120	120	150	150	174	174
<b>B</b>	79	76	80	94	144	138	158	150	176	160	180
<b>C</b>	79	85	90	101	101	131	131	153	153	169	169
<b>D</b>	50	56	64	84	84	90	90	122	122	135	135
<b>E</b>	55	48	50	73	86	85	104	106	130	112	132
<b>F</b>	4.8	4.8	4.8	5.8	5.8	5.8	5.8	7	7	7	7
<b>Weight Kg.</b>	1.0	1.1	1.8	2.6	3.4	4.9	6.4	9.5	12	17.5	17.5



### Marking



## X-ON Electronics

Largest Supplier of Electrical and Electronic Components

*Click to view similar products for [imo manufacturer](#):*

Other Similar products are found below :

[20.155MV/12-E](#) [MC14N-S-10110AC](#) [MB09-S-10=24](#) [DPS-1-030-24](#) [SRF-1C-SL-12VDC](#) [MB09-S-1024](#) [LDC18RRS](#) [SFSYE0111](#)  
[21.1500M/6-E](#) [20.3304M/2-E](#) [21.910M/5-E](#) [20.95MA/2-E](#) [21.95MHF/2-E](#) [PE69-4032](#) [DPS-1-060-24](#) [CS20A-A2](#) [CS20A-U1](#) [VFC02](#)  
[MSSTC11DA06](#) [20.95MHF/3-E](#) [B3T10](#) [XKL-040-21](#) [20.3304M/4-E](#) [SRDH-1A-SL-24VDC](#) [20.2500M/5-E](#) [21.155MH/12](#) [SRRHN-2CN-](#)  
[SL-12VDC](#) [20.920M/5-E](#) [MC10N-S-10110AC](#) [21.1550MF/8-E](#) [20.910M/6-E](#) [20.95MH/3-E](#) [21.95MV/3](#) [MA05-S-01230AC](#) [SRRHN-2CN-](#)  
[SL-5VDC](#) [LB69-4040](#) [20.3001M/6](#) [21.1500M/3-E](#) [SFSYE0311](#) [21.95MHF/6-E](#) [20.95MV/2-E](#) [20.155MV/4-E](#) [20.155MH/4-E](#) [20.950M/2-E](#)  
[MT5 1-50-FAR](#) [BS3P3REDO](#) [MB12-S-10=24](#) [MA05-S-1024DC](#) [20.155MVF/8-E](#) [20.2500MV/8-E](#)