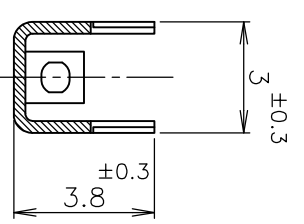
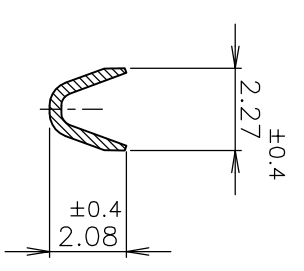


P	LTR	DESCRIPTION	DATE	DWN	APVD
B	REVISED	ECR-08-010159	22APR08	C.Z	S.Y

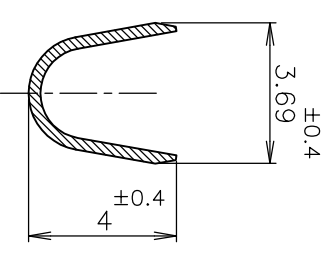
REVISIONS



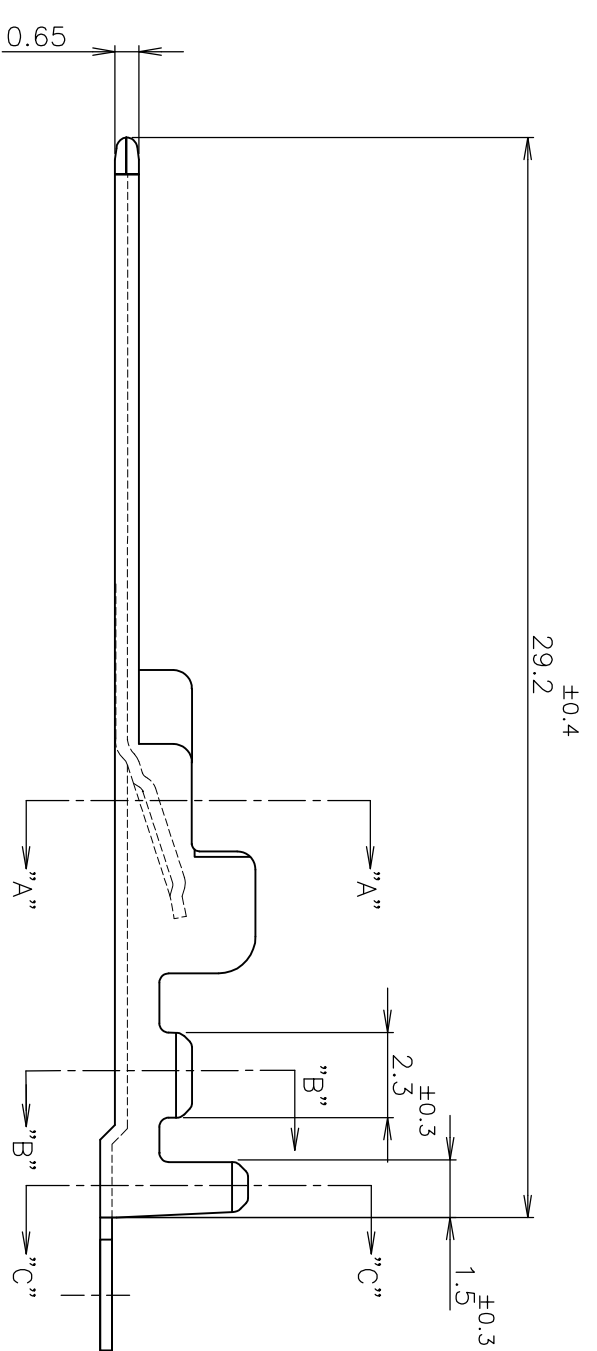
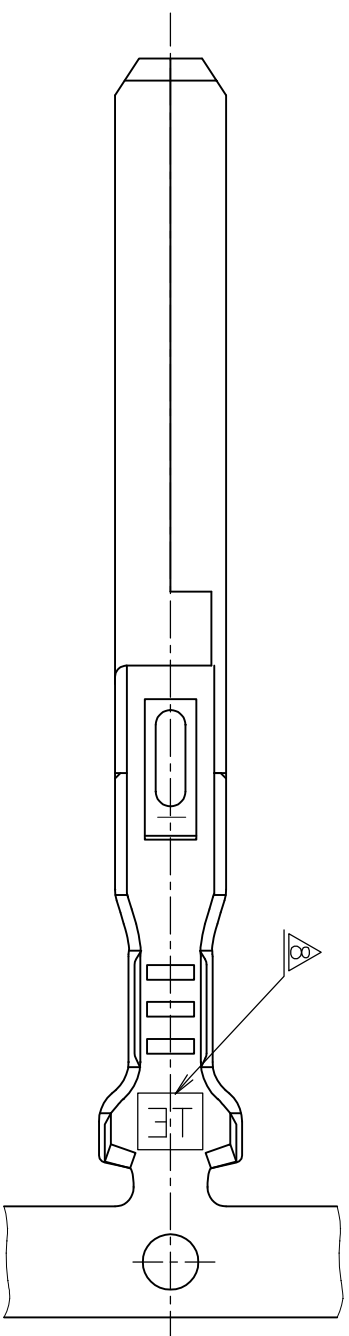
SECT "A" - "A"



SECT "B" - "B"



SECT "C" - "C"



NOTES:

- 1 MATERIAL : COPPER ALLOY.
- 2 FINISH : PRE-PLATED
- 3 FINISH : TIN PL ALL OVER
- 4 FINISH : PRE-PLATED
- 5 USED CONNECTOR P/N : X-179325-X, X-179318-X : X-179388-X
- 6 APPLICATION SPECIFICATION : (114-5182)
- GENERAL TOLERANCE
 $10\mu\text{m} \geq$: ± 0.2
 $30\mu\text{m} > 10\mu\text{m}$: ± 0.25
 $100\mu\text{m} > 30\mu\text{m}$: ± 0.3
 ANGLES : $\pm 3^\circ$
- TRADE MARK: "TE"

THIS DRAWING IS A CONTROLLED DOCUMENT.

DIMENSIONS: MM	TOLERANCES UNLESS OTHERWISE SPECIFIED:
0 PLC	\pm
1 PLC	\pm
2 PLC	\pm
3 PLC	\pm
4 PLC	\pm
ANGLES	\pm

DWN	03FEB94	INSULATION DIA	$\phi 1.4 \sim 2.6$ mm
CHK	T.YAMAD	WIRE RANGE	0.2~0.5mm ² (AWG20~24)
APVD	Y.FUJUIRA	NAME	Tyco Electronics
PRODUCT SPEC	Y.FUJUIRA	PLUG TAB CONTACT	
APPLICATION SPEC	114-5182	HYBRID MINI DRAWER CONNECTOR	
WEIGHT		RESTRICTED TO	
CUSTOMER DRAWING		SCALE	NTS

4	179322-3
3	1-179322-2
2	179322-2
FINISH	P/N

X-ON Electronics

Largest Supplier of Electrical and Electronic Components

Click to view similar products for [Heavy Duty Power Connectors](#) category:

Click to view products by [TE Connectivity](#) manufacturer:

Other Similar products are found below :

[1424439](#) [1424438](#) [09330062652](#) [2-8675P1](#) [605601-1](#) [6340G1](#) [6341G1](#) [6360G1](#) [6373G1](#) [6374g2](#) [6396G1](#) [647757-1](#) [66394-4](#) [6643411-1](#)
[6646058-2](#) [6646137-1](#) [6646138-1](#) [6646348-1](#) [6646479-1](#) [6646608-1](#) [6646786-1](#) [6646940-1](#) [6651091-1](#) [6651525-1](#) [6651529-1](#) [6651778-1](#)
[6651788-1](#) [696465-1](#) [696475-1](#) [73000005059](#) [73000005349](#) [73000005642](#) [73080255059](#) [73080965046](#) [765-15-0080A](#) [765-16-0080B](#)
[789.700-44](#) [789.700-54](#) [80-1010](#) [80-9](#) [827381-1](#) [829992-1](#) [902-77-02113](#) [PL00U-301-10D10](#) [PM103MOOLOO](#) [PM16S1620S32-50](#)
[PM212MOOLOO](#) [PM309FOOLOO](#) [PM324FOOLCH](#) [PMHPAF11S03](#)