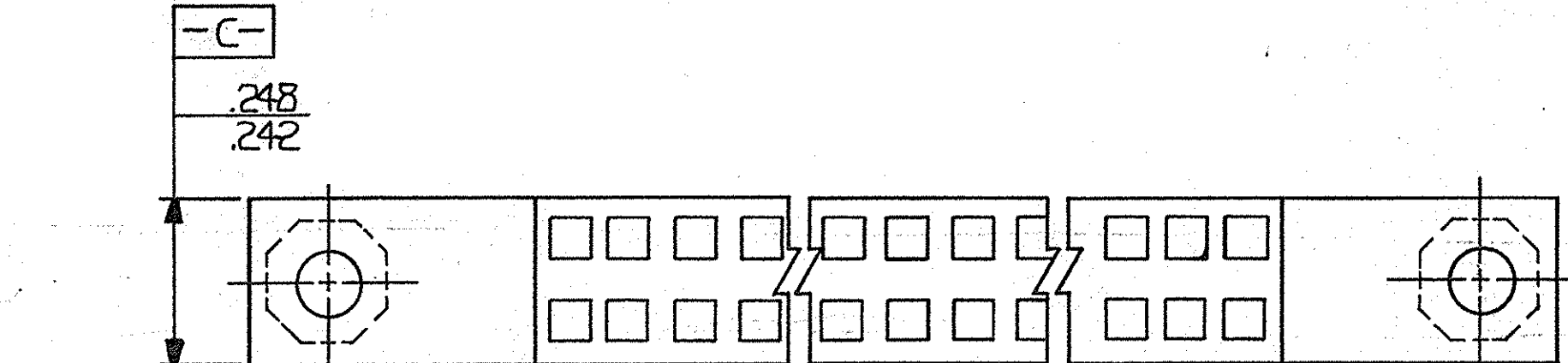
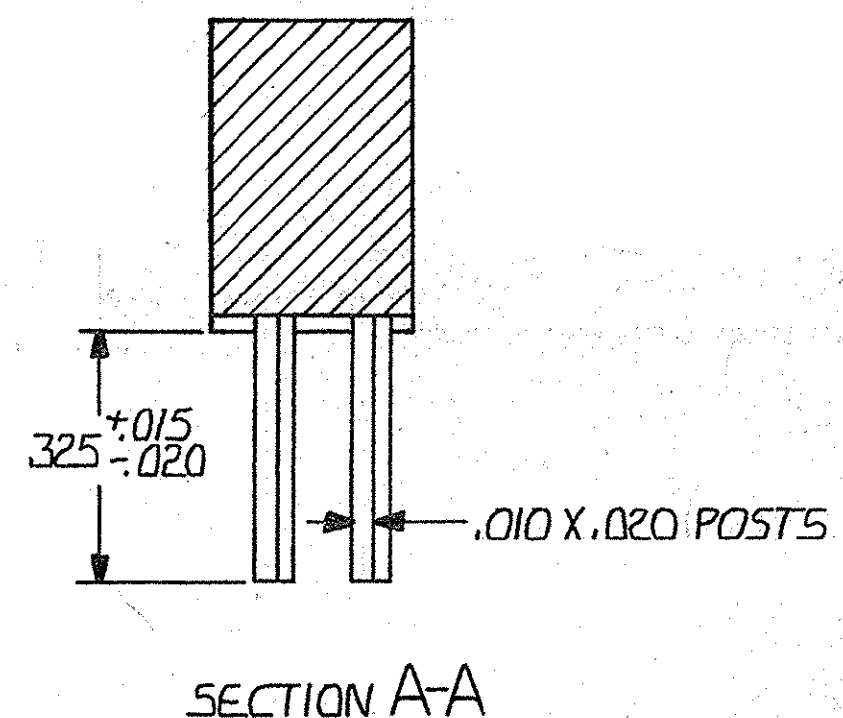
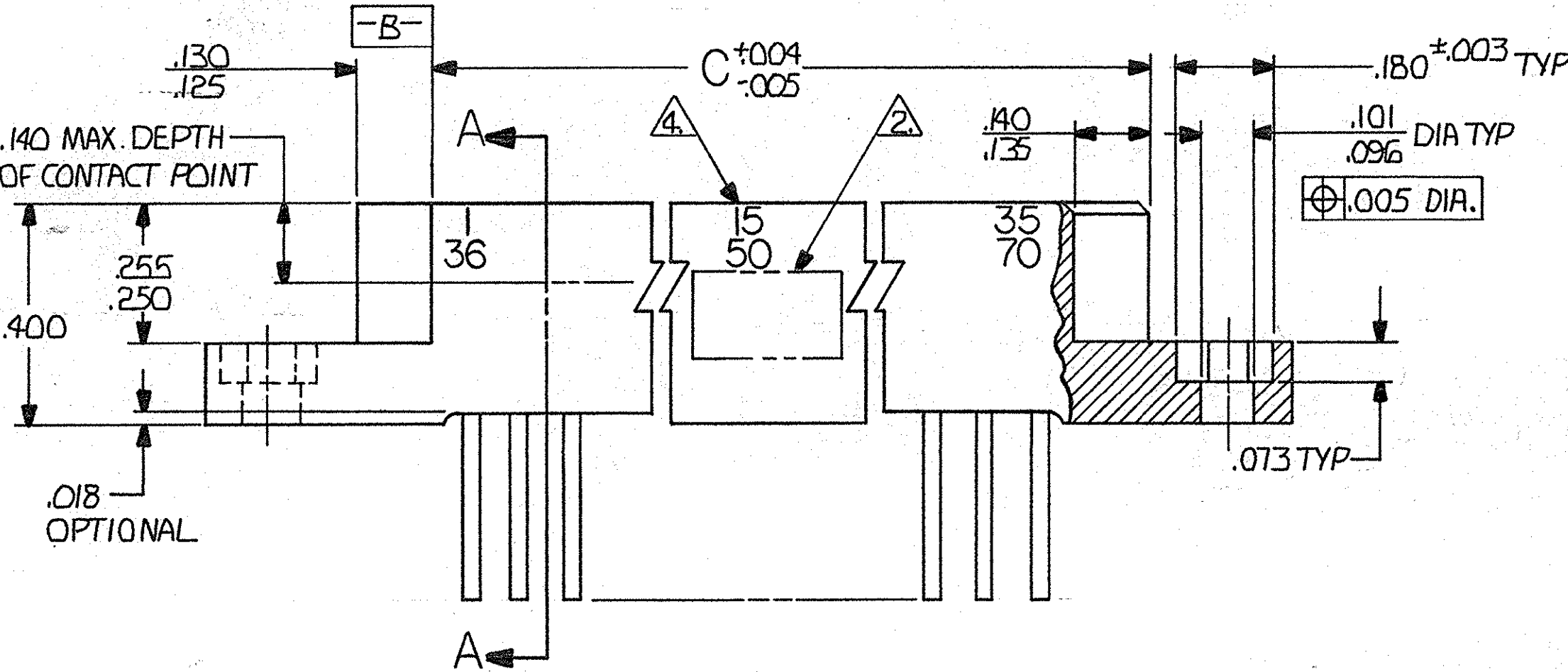
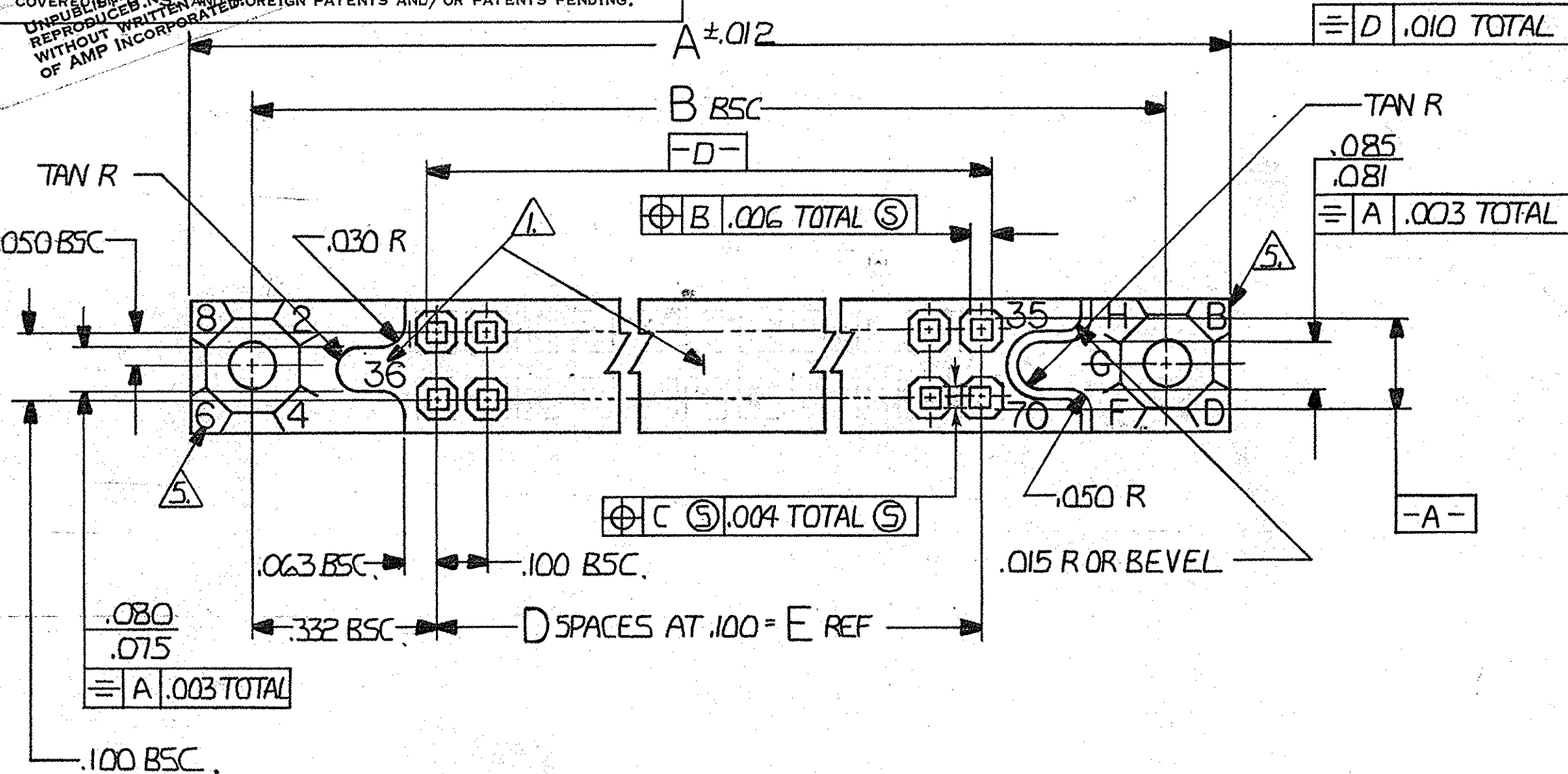


© COPYRIGHT 1977 BY AMP INCORPORATED, HARRISBURG, PA. ALL INTERNATIONAL RIGHTS RESERVED. AMP INCORPORATED PRODUCTS COVERED BY U.S. PATENTS AND FOREIGN PATENTS AND/OR PATENTS PENDING. UNREPRODUCED OR REPRODUCED WITHOUT WRITTEN PERMISSION OF AMP INCORPORATED.

| REVISIONS | | | | | |
|-----------|---|------|-----|------------------------------|-----------------|
| P | F | ZONE | LTR | DESCRIPTION | DATE APPROVED |
| | | | 01 | REVISED 5061 M.S. | 2-2-77 |
| | | | 02 | ADDED 4 P/N SHT. 2 6150 M.S. | 7-25-79 R9 |
| | | | 03 | MIL. P/N'S ASSIGNED | 4-80 DLK 110 |
| | | | 04 | REVISED PER ECN 8248 | 12-82 DJM |
| | | | A | REV. PER ECN AB-0535 | 01-02-85 JEA/11 |
| | | | B | REV PER DF-2240 | 10-4-84 JSH |
| | | | C | REV PER 0600-5859-96 | 4-98 JPL |
| | | | D | REV PER ECO-05-013278 | 11-05 PY |



| | | | | | |
|--|--|---|--|---|--|
| UNLESS OTHERWISE SPECIFIED DIMENSIONS ARE IN INCHES. TOLERANCES ON: DECIMALS ±.005 ANGLES 1/8 | | CONTRACT NO DR Robert Wolcott 11-12-76 CHK R. Williams 11-23-76 APPD R. Williams 11-23-76 APPD D. Co. Myers 11-29-76 DSGN APPD OTHER APPD | | PART NO | |
| MATERIAL | | AMP INCORPORATED Harrisburg, Pa. | | NAME BOX CONNECTOR RECEPTACLE ASSY .100 GRID EXTERNAL KEYING | |
| FINISH | | SIZE CODE IDENT NO DRAWING NO C 00779 530776 | | SHEET 1 OF 2 | |
| | | SCALE 4-1 | | | |

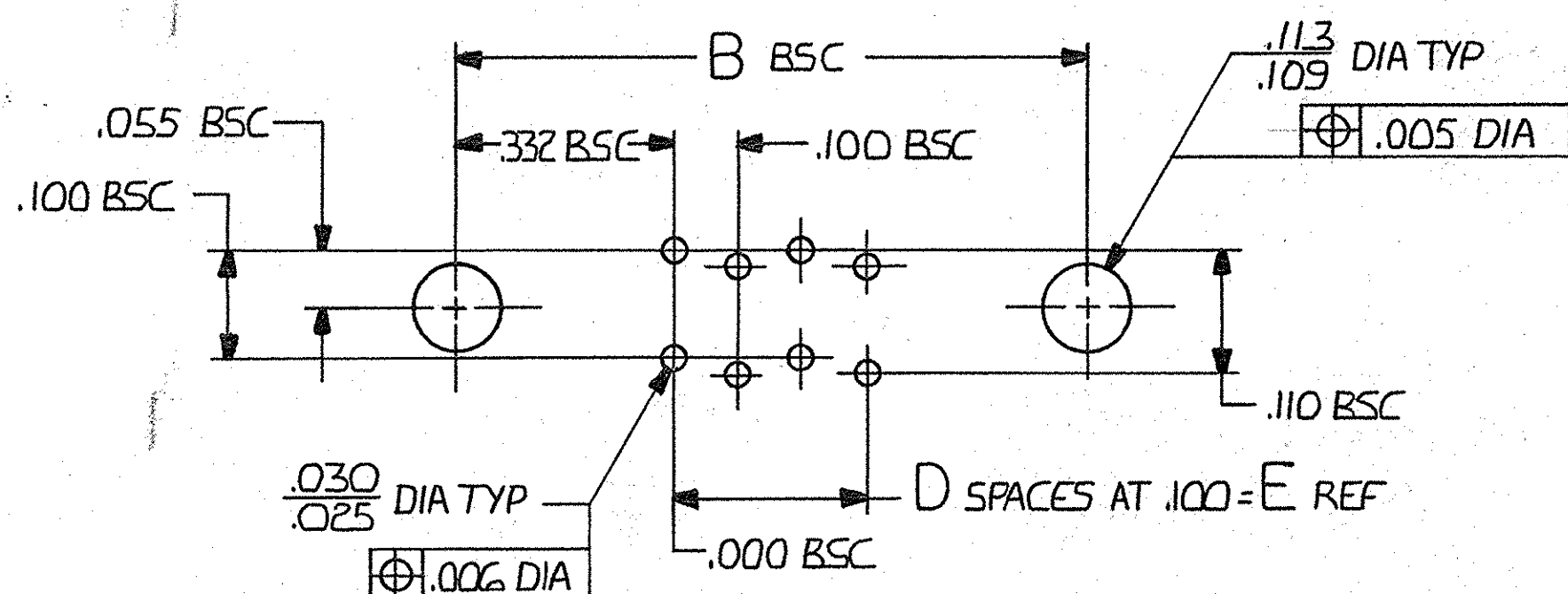
530776

© COPYRIGHT 19 BY AMP INCORPORATED, HARRISBURG, PA.
 ALL INTERNATIONAL RIGHTS RESERVED. AMP INCORPORATED PRODUCTS
 COVERED BY U. S. PATENTS AND/OR PATENTS PENDING.

UNPUBLISHED WORK
 REPRODUCED OR PUBLISHED
 WITHOUT WRITTEN PERMISSION
 OF AMP INCORPORATED.

| REVISIONS | | | | | |
|-----------|------|-----|----------------------|------|----------|
| FILE | ZONE | LTR | DESCRIPTION | DATE | APPROVED |
| ✓ | ✓ | | D (SEE SHEET 1 OF 2) | | |

1. NUMBERS AND LINES INDICATING EVERY FIVE CAVITIES MOLDED OR MARKED ON MATING FACE.
2. AMP PART NUMBER DATE CODE, 00779 & MILITARY PART NUMBER MOLDED OR MARKED THIS AREA. SIDE OPTIONAL
3. MUST MEET ALL APPLICABLE REQUIREMENTS OF MIL-C-55302.
4. NUMBERS INDICATING EVERY FIVE CAVITIES MOLDED OR MARKED ON SIDE.
5. KEY POSITION IDENTIFICATION MOLDED ON SURFACES SHOWN.
6. USE EXTERNAL KEY NUMBER 530341-1 MATES WITH PART NUMBER 530339.
7. HOUSING MATERIAL: DIALYL PHTHALATE COLOR: BLUE PER MIL-M-14 TYPE 50G-F.
8. CONTACT MATERIAL: BERYLLIUM COPPER OR COPPER-NICKEL-SILICONE
 FINISH: .000050 GOLD OVER NICKEL, TIN-LEAD ON TAILS



RECOMMENDED PRINTED CIRCUIT BOARD LAYOUT
 (CONNECTOR SIDE)

| | | | | | | | | | |
|----------------|---------------------------|-------------------|-------|----|-------|-------|-------|----------------|------------|
| M55302/27-201 | 71 | 140 ⁷⁰ | 6.900 | 69 | 7.165 | 7.565 | 7.855 | 140 | 1-530776-3 |
| M55302/27-200 | 68 | 134 ⁶⁷ | 6.600 | 66 | 6.865 | 7.265 | 7.555 | 134 | 1-530776-2 |
| M55302/27-199 | 66 | 130 ⁶⁵ | 6.400 | 64 | 6.665 | 7.065 | 7.355 | 130 | 1-530776-1 |
| M55302/27-198 | 61 | 120 ⁶⁰ | 5.900 | 59 | 6.165 | 6.565 | 6.855 | 120 | 1-530776-0 |
| M 55302/27-117 | 56 | 110 ⁵⁵ | 5.400 | 54 | 5.665 | 6.065 | 6.355 | 110 | 530776-9 |
| M 55302/27-116 | 51 | 100 ⁵⁰ | 4.900 | 49 | 5.165 | 5.565 | 5.855 | 100 | 530776-8 |
| M 55302/27-115 | 46 | 90 ⁴⁵ | 4.400 | 44 | 4.665 | 5.065 | 5.355 | 90 | 530776-7 |
| M 55302/27-114 | 41 | 80 ⁴⁰ | 3.900 | 39 | 4.165 | 4.565 | 4.855 | 80 | 530776-6 |
| M 55302/27-113 | 36 | 70 ³⁵ | 3.400 | 34 | 3.665 | 4.065 | 4.355 | 70 | 530776-5 |
| M 55302/27-112 | 31 | 60 ³⁰ | 2.900 | 29 | 3.165 | 3.565 | 3.855 | 60 | 530776-4 |
| M 55302/27-111 | 26 | 50 ²⁵ | 2.400 | 24 | 2.665 | 3.065 | 3.355 | 50 | 530776-3 |
| M 55302/27-110 | 21 | 40 ²⁰ | 1.900 | 19 | 2.165 | 2.565 | 2.855 | 40 | 530776-2 |
| M 55302/27-109 | 16 | 30 ¹⁵ | 1.400 | 14 | 1.665 | 2.065 | 2.355 | 30 | 530776-1 |
| M 55302 | | | | | | | | | |
| PART NUMBER | CONTACT IDENTIFICATION NO | | E | D | C | B | A | NO OF CONTACTS | PART NO |

| | | |
|--|------------------------------|---|
| UNLESS OTHERWISE SPECIFIED DIMENSIONS ARE IN INCHES. TOLERANCES ON: DECIMALS ±.005 ANGLES ±.005 | CONTRACT NO | AMP INCORPORATED Harrisburg, Pa. |
| | DR Robert Weber 11-12-76 | |
| MATERIAL | CHK R. Williams 11-23-76 | NAME BOX CONNECTOR RECEPTACLE ASSY .100 GRID EXTERNAL KEYING |
| | APPD R. Williams 11-23-76 | |
| FINISH | APPD R. Myers 11-29-76 | SIZE CODE IDENT NO DRAWING NO C 00779 530776 |
| | DSGN APPD | |
| OTHER APPD | SCALE 4-1 | SHEET 2 OF 2 |

530776

X-ON Electronics

Largest Supplier of Electrical and Electronic Components

Click to view similar products for [Rectangular MIL Spec Connectors](#) category:

Click to view products by [TE Connectivity](#) manufacturer:

Other Similar products are found below :

[006-1169-16](#) [CSR31343-0001-00000](#) [CSR31346-0001-A0001](#) [CSR31899-0001-00000](#) [CSR31900-0001-A0001](#) [CTJ-3D-05](#) [CTS-S16/16](#)
[M55302/57A36X](#) [M55302/58-A70Y](#) [65002-062](#) [65008-D08](#) [CY4602-000](#) [732-8020-01](#) [732-8021-02 B](#) [77058-22-55PN](#) [81542-20](#)
[86.030.0053.0](#) [1241346-1](#) [RM252-020-311-2900](#) [DMC-M 08-16 SNE](#) [1589051-4](#) [BACC65CAMA](#) [BACC65CAMN](#) [BACC65CP1PN](#)
[BACI10BC1220PN](#) [18023-9](#) [HSB-D4S03DM222X](#) [2217548-1](#) [891-009-15SA2-BRT1T](#) [SIM2S100A](#) [1604996-2](#) [SMD25PN90L-4055](#)
[1925036-4](#) [220A012-25225-0](#) [22628-10-6P-791](#) [CSR31343-0001-A0001](#) [CSR31899-0001-A0001](#) [CSR31900-0001-00000](#) [33526M11-08PD](#)
[RE04-212S](#) [CTD160E01F-6148](#) [CTJ112E03B](#) [CTJ122E02D-8000](#) [CTJ-3D-12](#) [CTJ920E06N-513](#) [CTJ920E12N-513](#) [CTL-16-090](#) [CTR06-](#)
[5100SY](#) [M55302/63A20H](#) [M55302/66-30H](#)