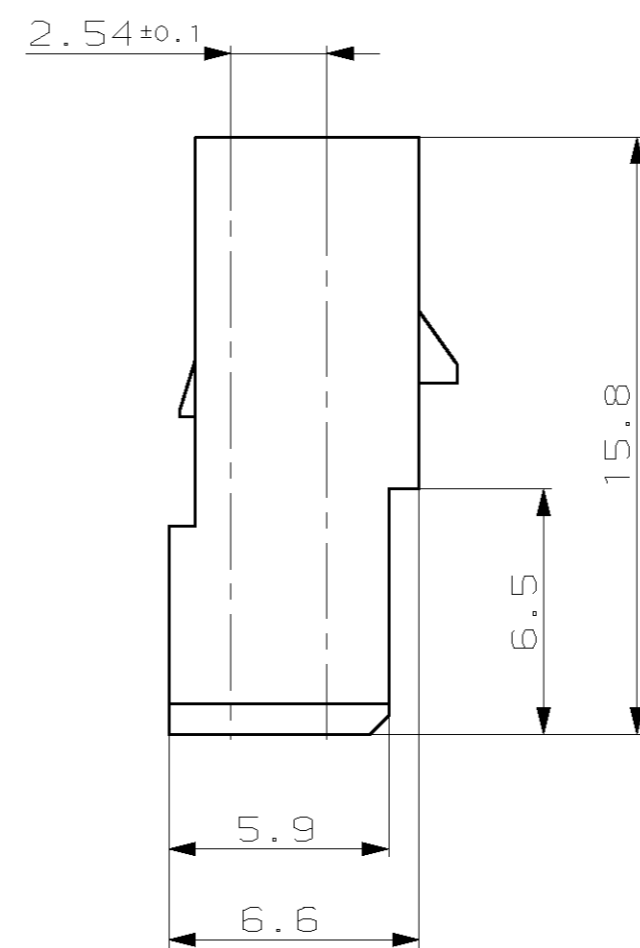
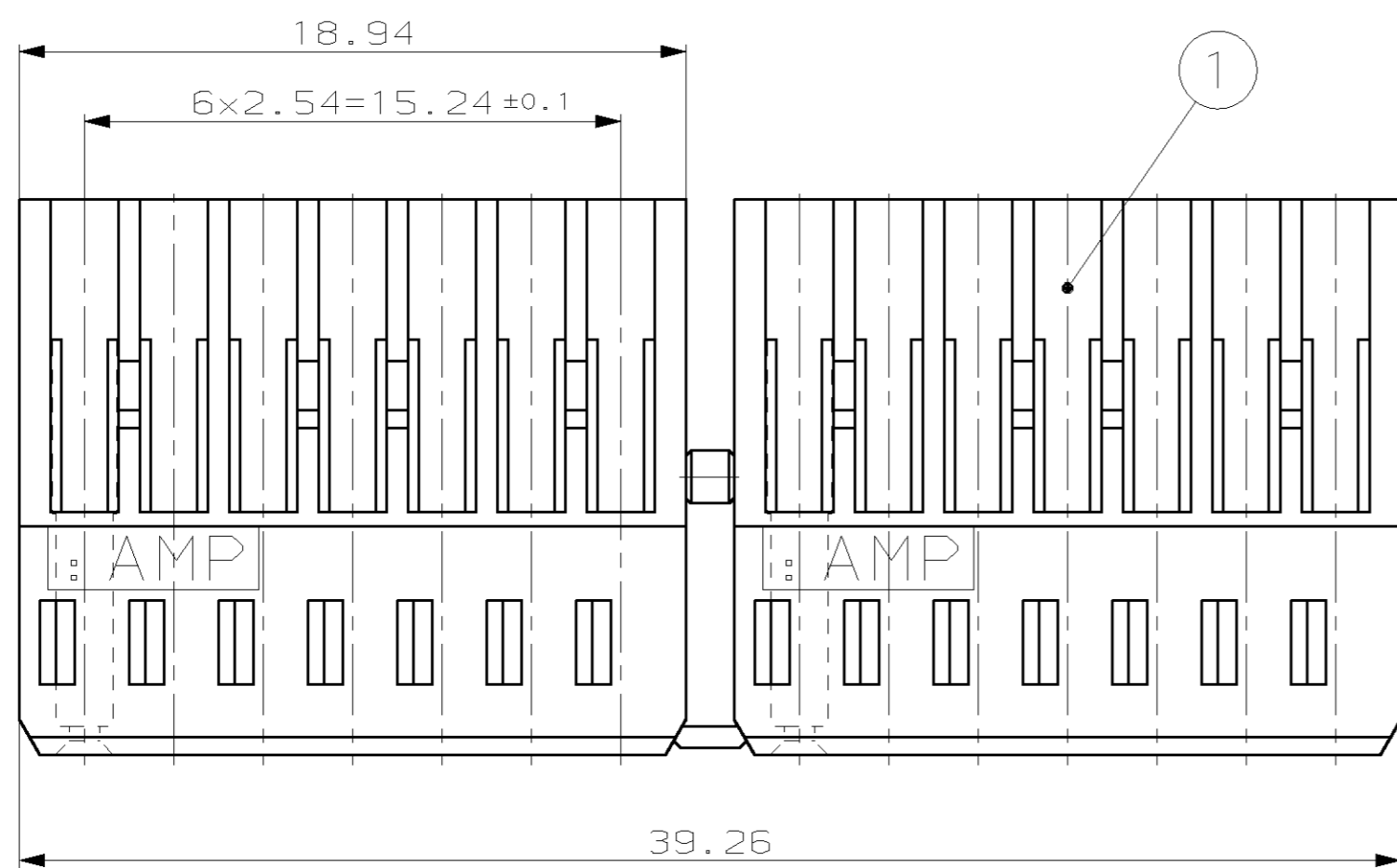
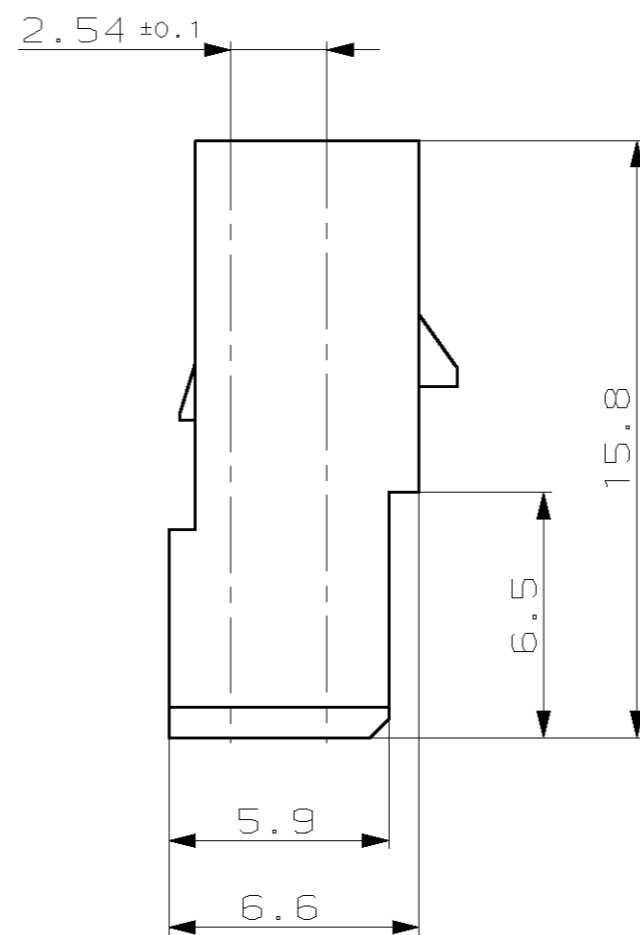
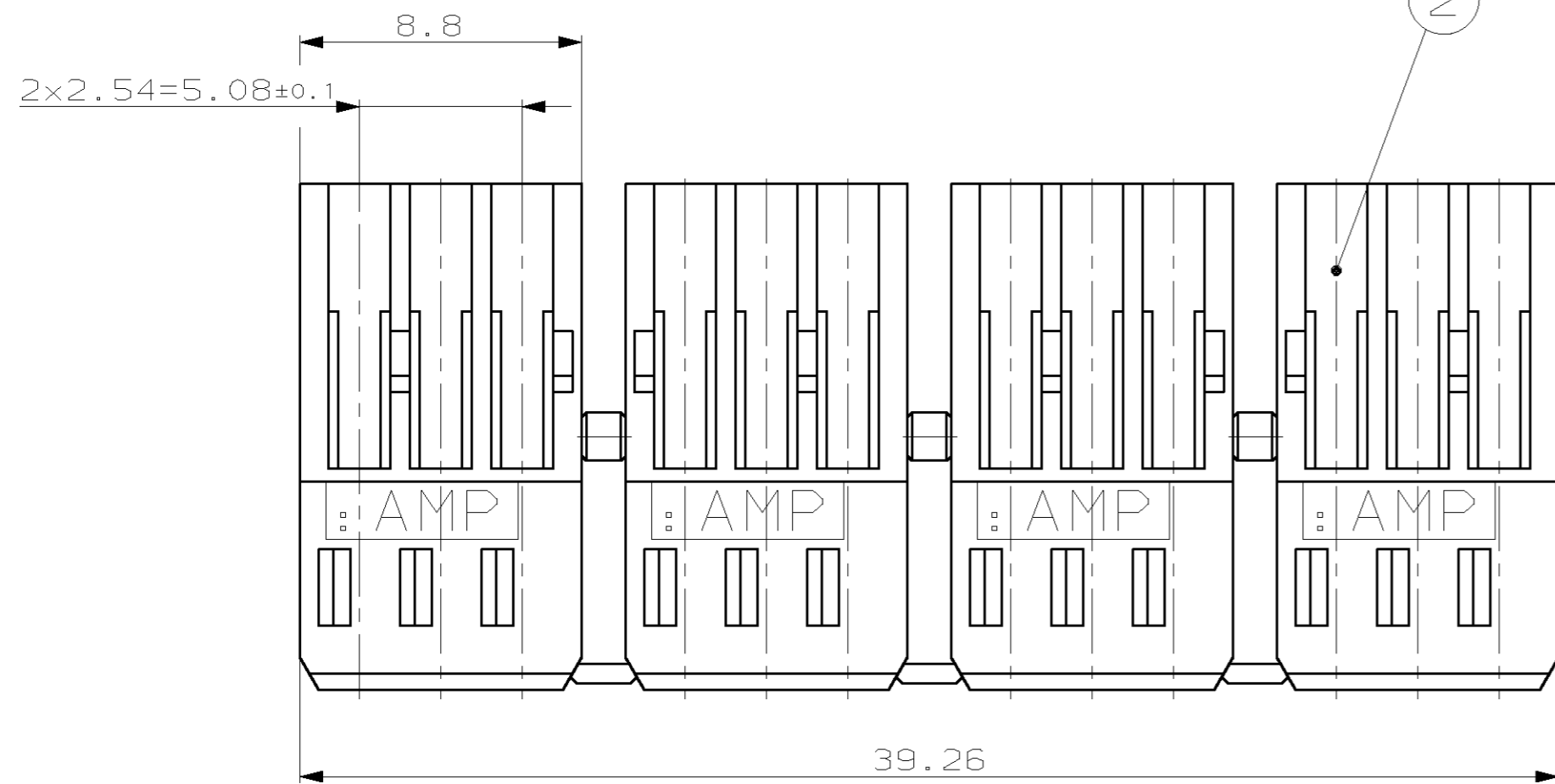


THIS DRAWING IS UNPUBLISHED.
 VERTRAULICHE UNVERÖFFENTLICHTE ZEICHNUNG
 RELEASED FOR PUBLICATION
 FREI FÜR VERÖFFENTLICHUNG
 (C) COPYRIGHT 19- BY AMP INCORPORATED. ALL RIGHTS RESERVED.
 ALLE RECHTE VORBEHALTEN
 MATED WITH:
 PASSEND ZU:

| | | | | | | | |
|--------------|------|-----------------------|-----|------------|-----------|------|------|
| LOC | DIST | REVISIONS | | | DATE | DWN | APVD |
| AI | - | P | LTR | ÄNDERUNGEN | 12-DEC-03 | MAH. | ZITZ |
| PROJEKT NR.: | | DESCRIPTION | | | | | |
| - | | BESCHREIBUNG | | | | | |
| | | NEW DRAWING PUBLISHED | | | | | |



| CUSTOMER PART NO | AMP PART NO | REV. | PCS. | MATERIAL | SURFACE COLOR | DESCRIPTION | ITEM NO |
|------------------|-------------|------|------|------------|---------------|-----------------|---------|
| - | 1-928038-2 | - | - | PBTP 20 GV | SCHWARZ | 2 x 3 POL. (4x) | 2 |
| - | 1-928038-1 | - | - | PBTP 20 GV | GRAU | 2 x 3 POL. (4x) | 2 |
| - | 928038-2 | - | - | PBTP 20 GV | SCHWARZ | 2 x 7 POL. (2x) | 1 |
| - | 928038-1 | - | - | PBTP 20 GV | GRAU | 2 x 7 POL. (2x) | 1 |

| | |
|---|---|
| <small>THIS DRAWING IS A CONTROLLED DOCUMENT FOR AMP INCORPORATED. IT IS SUBJECT TO CHANGE AND THE CONTROLLING ENGINEERING ORGANIZATION SHOULD BE CONTACTED FOR THE LATEST REVISION. DIESES ZEICHNUNGSDOKUMENT WIRD DURCH AMP INCORPORATED KONTROLLIERT. ÄNDERUNGEN, DIE DEM TECHNISCHEN FORTSCHRITT DIENEN, SIND VORBEHALTEN. DEN JEWELIGS LETZTSTÄNDIGEN ÄNDERUNGSSTAND EFFAHREN SIE AUF ANFRAGE.</small> | |
| DIMENSIONS: DIMENSIONEN: mm | TOLERANCES UNLESS OTHERWISE SPECIFIED: ALLGEMEINTOLERANZEN n. 150 8015 n. 150 2768 - mH - E n. DIN 16901 - 140 0 PLC ± 1 PLC ±0.2 2 PLC ± 3 PLC ± ANGLES/WINKEL ±2° FINISH/OBERFLÄCHE/FARBE |
| MATERIAL | |

| | | |
|--------------------|------------------|-----------|
| DWN | Mahnke, B. | 12-DEC-03 |
| CHK | Zitz, A. | 15-DEC-03 |
| APVD | Bleicher, M. | 16-DEC-03 |
| PRODUCT SPEC | | |
| PRODUCT SPEC | | |
| APPLICATION SPEC | | |
| VERARBEITUNGSSPEZ. | | |
| WEIGHT | | |
| GEWICHT | | |
| CUSTOMER DRAWING | /KUNDENZEICHNUNG | |

AMP tyco Electronics AMP GmbH
 D - 64625 Bensheim

2x3 UND 2x7 POL. TAND SPRING MT BUCHSENGEHÄUSE

| | | | | | | |
|----------|-----|-----------|-------|----------------|--------|---------------|
| SIZE | A2 | CAGE CODE | 00779 | DRAWING NO | 928038 | RESTRICTED TO |
| | | | | ZEICHNUNGS-NR. | | NUR FÜR |
| MASSSTAB | 5:1 | BLATT | 1 | OF | 1 | REV |
| | | | VON | | | D1 |

X-ON Electronics

Largest Supplier of Electrical and Electronic Components

Click to view similar products for [Headers & Wire Housings](#) category:

Click to view products by [TE Connectivity](#) manufacturer:

Other Similar products are found below :

[95000-104TRLF](#) [10135584-644402LF](#) [DF62W-EP2022PCA](#) [95000-106TRLF](#) [DF62W-2022SCA](#) [DF62W-EP2022PC](#) [2203348](#) [DF62W-2022SC](#) [1084018](#) [1029039](#) [1084017](#) [802-10-012-10-002000](#) [1112640](#) [1112639](#) [000-34000](#) [0009482033](#) [0009507031](#) [57102-S06-03LF](#) [57202-S52-04LF](#) [PCN6-15S-2.5E](#) [0039019024](#) [58102-G61-06LF](#) [582553-1](#) [0009485154](#) [0009508121](#) [0022285053](#) [0050291907](#) [018731A](#) [LY20-4P-DT1-P1E-BR](#) [02.125.8002.8](#) [60101931](#) [60598-1 \(Cut Strip\)](#) [M1625-3R/100](#) [61062-3](#) [61082-181009](#) [636-1427](#) [638009-1](#) [641938-9](#) [641991-4](#) [644168-1](#) [647662-1](#) [65039-019ELF](#) [65817-002LF](#) [65817-015LF](#) [65863-015LF](#) [66207-023LF](#) [67016-026LF](#) [67046-001LF](#) [67095-007LF](#) [67230-005LF](#)