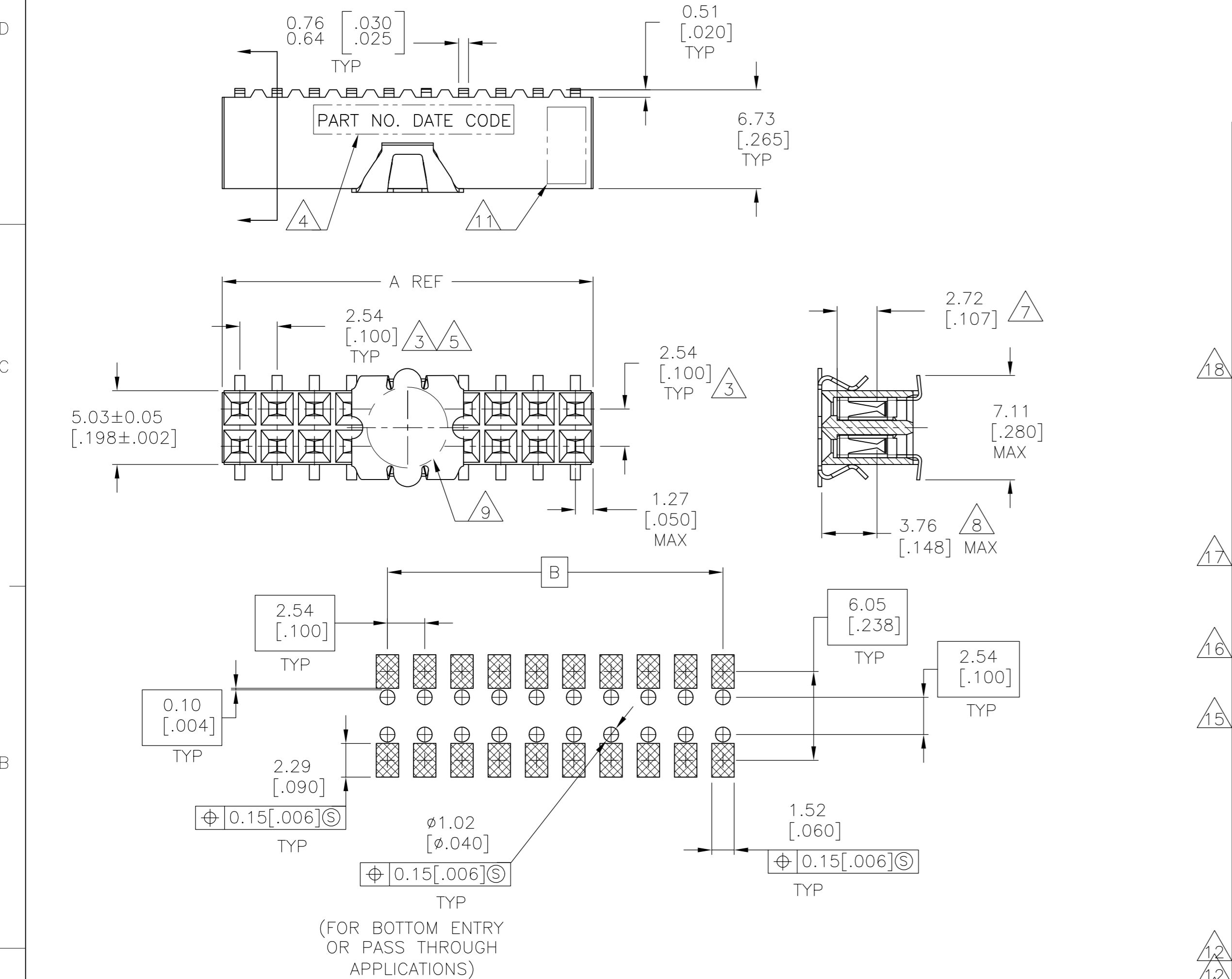


THIS DRAWING IS UNPUBLISHED. RELEASED FOR PUBLICATION  
 © COPYRIGHT - By - ALL RIGHTS RESERVED.

LOC	DIST	REVISIONS					
		P	LTR	DESCRIPTION	DATE	DWN	APVD
AD	00	J9		REVISED PER ECO-13-005565	01APR13	KH	JO

FOR PART NUMBERS 5-147105-1 THRU 9-147105-0  
 SEE SHEET 2



RECOMMENDED PC BOARD LAYOUT  
 0.20[.008] THICK STENCIL

FINISH	EIA TAPE WIDTH	B	A	NO. OF POSN.	PART NUMBER			
1	B	A	B	120mm	99.06 [3.900]	101.60 [4.000]	80	4-147105-0
				96.52 [3.800]	99.06 [3.900]	78	3-147105-9	
				93.98 [3.700]	96.52 [3.800]	76	3-147105-8	
				91.44 [3.600]	93.98 [3.700]	74	3-147105-7	
				88.90 [3.500]	91.44 [3.600]	72	3-147105-6	
				86.36 [3.400]	88.90 [3.500]	70	3-147105-5	
				83.82 [3.300]	86.36 [3.400]	68	3-147105-4	
				81.28 [3.200]	83.82 [3.300]	66	3-147105-3	
				78.74 [3.100]	81.28 [3.200]	64	3-147105-2	
				76.20 [3.000]	78.74 [3.100]	62	3-147105-1	
				73.66 [2.900]	76.20 [3.000]	60	3-147105-0	
				71.12 [2.800]	73.66 [2.900]	58	2-147105-9	
				68.58 [2.700]	71.12 [2.800]	56	2-147105-8	
				66.04 [2.600]	68.58 [2.700]	54	2-147105-7	
				63.50 [2.500]	66.04 [2.600]	52	2-147105-6	
				60.96 [2.400]	63.50 [2.500]	50	2-147105-5	
				58.42 [2.300]	60.96 [2.400]	48	2-147105-4	
				55.88 [2.200]	58.42 [2.300]	46	2-147105-3	
				53.34 [2.100]	55.88 [2.200]	44	2-147105-2	
				50.80 [2.000]	53.34 [2.100]	42	2-147105-1	
				48.26 [1.900]	50.80 [2.000]	40	2-147105-0	
				45.72 [1.800]	48.26 [1.900]	38	1-147105-9	
				43.18 [1.700]	45.72 [1.800]	36	1-147105-8	
				40.64 [1.600]	43.18 [1.700]	34	1-147105-7	
38.10 [1.500]	40.64 [1.600]	32	1-147105-6					
35.56 [1.400]	38.10 [1.500]	30	1-147105-5					
33.02 [1.300]	35.56 [1.400]	28	1-147105-4					
30.48 [1.200]	33.02 [1.300]	26	1-147105-3					
27.94 [1.100]	30.48 [1.200]	24	1-147105-2					
25.40 [1.000]	27.94 [1.100]	22	1-147105-1					
22.86 [.900]	25.40 [1.000]	20	1-147105-0					
20.32 [.800]	22.86 [.900]	18	147105-9					
17.78 [.700]	20.32 [.800]	16	147105-8					
15.24 [.600]	17.78 [.700]	14	147105-7					
12.70 [.500]	15.24 [.600]	12	147105-6					
10.16 [.400]	12.70 [.500]	10	147105-5					
7.62 [.300]	10.16 [.400]	8	147105-4					
5.08 [.200]	7.62 [.300]	6	147105-3					
2.54 [.100]	5.08 [.200]	4	147105-2					
24mm	-	2.54 [.100]	2	147105-1				

12/6 OBSOLETE

THIS DRAWING IS A CONTROLLED DOCUMENT.

DIMENSIONS: mm [INCHES]	TOLERANCES UNLESS OTHERWISE SPECIFIED: 0 PLC ± - 1 PLC ± - 2 PLC ± .005[0.13] 3 PLC ± - 4 PLC ± - ANGLES ± -	DWN M.BINNER 06NOV02 CHK J.OLSON 06NOV02 APVD J.OLSON 06NOV02 PRODUCT SPEC	NAME
MATERIAL 1	FINISH SEE TABLE	APPLICATION SPEC 108-25022 WEIGHT 114-25018	SIZE CAGE CODE DRAWING NO RESTRICTED TO A2 00779 C=147105
CUSTOMER DRAWING		SCALE 4:1	SHEET 1 OF 2 REV J9

TE Connectivity  
 RECEPTACLE ASSEMBLY, MOD IV,  
 DOUBLE ROW, DUAL ENTRY, .100X.100CL,  
 SURFACE MOUNT, AMPMODU


THIS DRAWING IS UNPUBLISHED. RELEASED FOR PUBLICATION  
 © COPYRIGHT - By - ALL RIGHTS RESERVED.

LOC		DIST		REVISIONS				
P	LTR	DESCRIPTION			DATE	DWN	APVD	
		SEE SHEET 1						

- 1 HOUSING: FLAME RETARDANT, GLASS FILLED, POLYESTER, COLOR: BLACK.  
CONTACT: PHOSPHOR BRONZE  
VACUUM COVER: STAINLESS STEEL
- 2 CONTACT: DUPLEX PLATED 0.76µm[.000030] GOLD IN CONTACT AREA, 3.81-7.62µm[.000150-.000300] BRIGHT TIN-LEAD ON, LEADS, ALL OVER 1.27µm[.000050] MINIMUM NICKEL
- 3 THESE DIMENSIONS PERTAIN TO CAVIITY CENTERLINES ONLY NOT TO CONTACT LOACATIONS
- 4 MARK PART NUMBER AND DATE CODE, IN APPROXIMATE LOCATION SHOWN, EITHER SIDE.
- 5 TOLERANCE IS NON-CUMULATIVE.
- 6 2 POSITION DATE CODE IS MARKED OPPOSITE SIDE OF TE CONNECTIVITY LOGO.
- 7 POINT OF MEASUREMENT DIMENSION FOR PLATING THICKNESS (INSIDE CONTACT BEAM).
- 8 POINT-OF-CONTACT DIMENSION.
- 9 ø5.51[.217] MIN TARGET AREA FOR VACUUM PICK UP. COVER TO BE REMOVED AFTER SOLDERING.
- 10 PACKAGED IN TAPE & REEL PER EIA 481 SPECIFICATION.
- 11 TE CONNECTIVITY TRADEMARK AND CSA LOGO ARE MOLDED INTO HOUSING.
- 12 NO PART NUMBER REQUIRED ON THIS PART.
- 13 CONTACT: DUPLEX PLATE CONNECTIVITYD 0.76µm[.000030] GOLD IN CONTACT AREA, 3.81-7.62µm[.000150-.000300] MATTE TIN ON LEADS, ALL OVER 1.27µm[.000050] MINIMUM NICKEL.
- 14 ROHS 2002/95/EC COMPLIANT.
- 15 SUPERRSEDED BY 6-147105-5
- 16 SUPERRSEDED BY 6-147105-8
- 17 SUPERRSEDED BY 7-147105-2
- 18 SUPERRSEDED BY 8-147105-0

FINISH	EIA TAPE WIDTH	B	A	NO.OF POSN.	PART NUMBER
120mm	120mm	99.06[3.900]	101.60[4.000]	80	9-147105-0
		96.52[3.800]	99.06[3.900]	78	8-147105-9
		93.98[3.700]	96.52[3.800]	76	8-147105-8
		91.44[3.600]	93.98[3.700]	74	8-147105-7
		88.90[3.500]	91.44[3.600]	72	8-147105-6
		86.36[3.400]	88.90[3.500]	70	8-147105-5
		83.82[3.300]	86.36[3.400]	68	8-147105-4
		81.28[3.200]	83.82[3.300]	66	8-147105-3
		78.74[3.100]	81.28[3.200]	64	8-147105-2
		76.20[3.000]	78.74[3.100]	62	8-147105-1
		73.66[2.900]	76.20[3.000]	60	8-147105-0
		71.12[2.800]	73.66[2.900]	58	7-147105-9
88mm	88mm	68.58[2.700]	71.12[2.800]	56	7-147105-8
		66.04[2.600]	68.58[2.700]	54	7-147105-7
		63.50[2.500]	66.04[2.600]	52	7-147105-6
		60.96[2.400]	63.50[2.500]	50	7-147105-5
		58.42[2.300]	60.96[2.400]	48	7-147105-4
72mm	72mm	55.88[2.200]	58.42[2.300]	46	7-147105-3
		53.34[2.100]	55.88[2.200]	44	7-147105-2
		50.80[2.000]	53.34[2.100]	42	7-147105-1
		48.26[1.900]	50.80[2.000]	40	7-147105-0
		45.72[1.800]	48.26[1.900]	38	6-147105-9
		43.18[1.700]	45.72[1.800]	36	6-147105-8
		40.64[1.600]	43.18[1.700]	34	6-147105-7
		38.10[1.500]	40.64[1.600]	32	6-147105-6
		35.56[1.400]	38.10[1.500]	30	6-147105-5
		33.02[1.300]	35.56[1.400]	28	6-147105-4
44mm	44mm	30.48[1.200]	33.02[1.300]	26	6-147105-3
		27.94[1.100]	30.48[1.200]	24	6-147105-2
		25.40[1.000]	27.94[1.100]	22	6-147105-1
		22.86[.900]	25.40[1.000]	20	6-147105-0
		20.32[.800]	22.86[.900]	18	5-147105-9
		17.78[.700]	20.32[.800]	16	5-147105-8
		15.24[.600]	17.78[.700]	14	5-147105-7
		12.70[.500]	15.24[.600]	12	5-147105-6
		10.16[.400]	12.70[.500]	10	5-147105-5
		7.62[.300]	10.16[.400]	8	5-147105-4
24mm	24mm	5.08[.200]	7.62[.300]	6	5-147105-3
		2.54[.100]	5.08[.200]	4	5-147105-2
12/6 OBSOLETE			2.54[.100]	2	5-147105-1

- 12
- 12
- 12
- 12

THIS DRAWING IS A CONTROLLED DOCUMENT.		DWN M.BINNER 06NOV02	 TE Connectivity		
DIMENSIONS: mm [INCHES]		CHK J.OLSON 06NOV02			
TOLERANCES UNLESS OTHERWISE SPECIFIED:		APVD J.OLSON 06NOV02	NAME RECEPTACLE ASSEMBLY, MOD IV, DOUBLE ROW, DUAL ENTRY, .100X.100CL, SURFACE MOUNT, AMPMODU		
0 PLC ± - 1 PLC ± - 2 PLC ± .005[0.13] 3 PLC ± - 4 PLC ± - ANGLES ± -		PRODUCT SPEC APPLICATION SPEC 108-25022	SIZE A2	CAGE CODE 00779	DRAWING NO 147105
MATERIAL 1		FINISH SEE TABLE	WEIGHT 114-25018	RESTRICTED TO -	SCALE 1:1
CUSTOMER DRAWING			SHEET 2 of 2	REV J9	

## X-ON Electronics

Largest Supplier of Electrical and Electronic Components

*Click to view similar products for [Headers & Wire Housings](#) category:*

*Click to view products by [TE Connectivity](#) manufacturer:*

Other Similar products are found below :

[95000-104TRLF](#) [10135584-644402LF](#) [DF62W-EP2022PCA](#) [95000-106TRLF](#) [DF62W-2022SCA](#) [DF62W-EP2022PC](#) [2203348](#) [DF62W-2022SC](#) [1084018](#) [1029039](#) [1084017](#) [802-10-012-10-002000](#) [1112640](#) [1112639](#) [000-34000](#) [0009482033](#) [0009507031](#) [57102-S06-03LF](#) [57202-S52-04LF](#) [PCN6-15S-2.5E](#) [0039019024](#) [58102-G61-06LF](#) [582553-1](#) [0009485154](#) [0009508121](#) [0022285053](#) [0050291907](#) [018731A](#) [LY20-4P-DT1-P1E-BR](#) [02.125.8002.8](#) [60101931](#) [60598-1 \(Cut Strip\)](#) [M1625-3R/100](#) [61062-3](#) [61082-181009](#) [636-1427](#) [638009-1](#) [641938-9](#) [641991-4](#) [644168-1](#) [647662-1](#) [65039-019ELF](#) [65817-002LF](#) [65817-015LF](#) [65863-015LF](#) [66207-023LF](#) [67016-026LF](#) [67046-001LF](#) [67095-007LF](#) [67230-005LF](#)