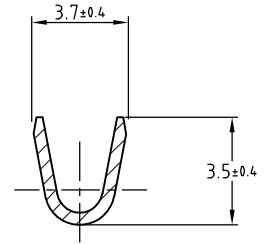
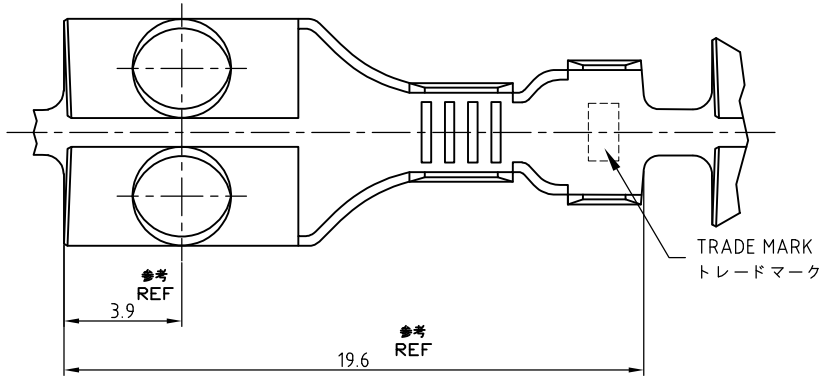
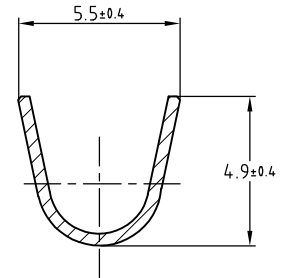
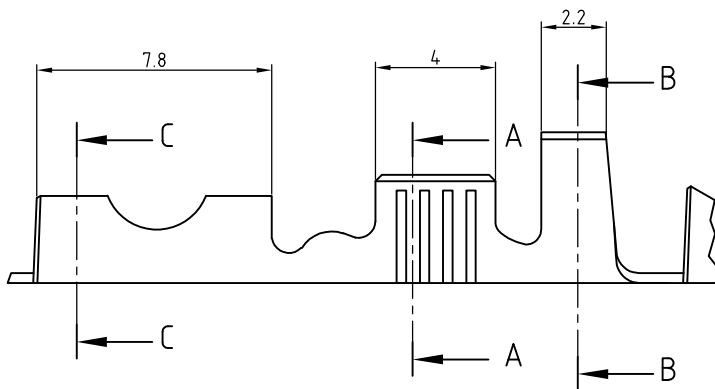


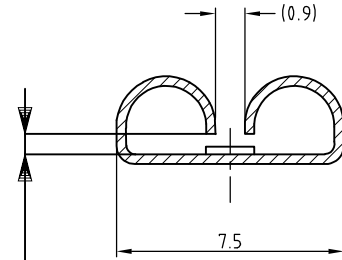
LOC J	DIST —	REVISIONS 変更			DATE	DWN	APVD
		P	LTR	DESCRIPTION			
			D1	REVISED PER ECO-11-005030	11MAR11	RK	HMR



SECT.
断面 A-A



SECT.
断面 B-B



SECT.
断面 C-C

この寸法はかん合力によって規定する。
THIS DIMENSION IS CONTROLLED WITH MATING FORCE

NOTE;

- STRESS RELIEVING FINISH IS SUBJECT TO CHANGE BY THE TYPE OF STRESS RELIVING PROCESS
INERT GAS FURNACE --- MATTE
ATOMOSPHERIC FURNACE FOLLOWED BY ACID PICKLE --- BRIGHT

注;

- ストレス除去処理
処理法により外観が変わります。
不活性ガス加熱方式 --- 無光沢
大気加熱方式 --- 光沢

TIN PLATING 錫めっき	BRASS THICKNESS 黄銅 板厚0.3	170342-2
— // —	BRASS THICKNESS 黄銅 板厚0.3	170342-1
FINISH 仕上	MATERIAL 材質	PART NO. 型番

THIS DRAWING IS UNPUBLISHED. ALL RIGHTS RESERVED. RELEASED FOR PUBLICATION.

WIRE RANGE 総合電線断面積
0.5~2.27mm² (AWG#20-14)

INSULATION DIA 被覆外径
2.2~3.4mmφ

DIMENSIONS:
単位: 耗
mm

DWN J.SATO 17MAY2007

MATERIAL 材料 SEE TABLE

FINISH 仕上 SEE TABLE

TOLERANCES UNLESS OTHERWISE SPECIFIED:
一般公差

CHK S.MANABE 17MAY2007

APVD S.MANABE 17MAY2007



TE Connectivity

0 PLC	± 0.2
1 PLC	±
2 PLC	± 0.25
3 PLC	±
4 PLC	±
ANGLES	± 3°

PRODUCT SPEC
製品規格

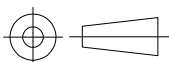
NAME 名称 .250 SERIES RECEPTACLE WITHOUT LATCH

APPLICATION SPEC
取付適用規格

SIZE CAGE CODE DRAWING NO 番号 RESTRICTED TO

WEIGHT

A4 00779 C-170342



CUSTOMER DRAWING

SCALE 尺度 4:1 SHEET 1 OF 1 REV D1

X-ON Electronics

Largest Supplier of Electrical and Electronic Components

Click to view similar products for [Terminals](#) category:

Click to view products by [TE Connectivity](#) manufacturer:

Other Similar products are found below :

[HT-13-10](#) [71M-250-32-NB](#) [01-2065-1-0216](#) [00581P0075](#) [M10-10RX](#) [M10BCK](#) [60205-1](#) [604200-1](#) [60598-1-CUT-TAPE](#) [60617-1-C](#) [60873-1](#) [M14-516R/SK](#) [M14-6RSX](#) [M18-10FLX](#) [M18-8FBX](#) [M18-8R/LX](#) [M18BCK](#) [61314-6-C](#) [61-S](#) [61-SN-A](#) [62-NBM-A](#) [63-S](#) [640179-1](#) [640917-2-CUT-TAPE](#) [6501550002](#) [66107-2-C](#) [696683-1](#) [696834-1](#) [696861-1](#) [696931-1](#) [696999-1](#) [M8-516RK](#) [M86700006](#) [MA250DMFMX-A](#) [701-2007](#) [701-2307](#) [701-7761-03](#) [70F-110-32-PB](#) [718-N-A](#) [71M-187-20-NBL](#) [71M-250-32-NBL](#) [72F-187-20-NBL](#) [72M-250-32-NBL](#) [7310](#) [73F-250-32](#) [73F-250-32-NBL](#) [73F-250-32-NL](#) [F14-10C](#) [F-1M](#) [751-250](#)