

THIS DRAWING IS UNPUBLISHED.

RELEASED FOR PUBLICATION

LOC

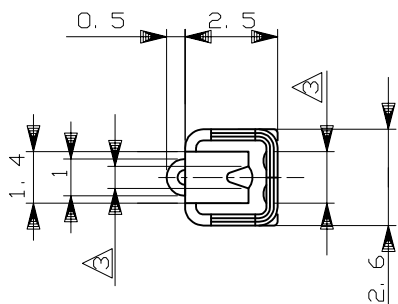
DIST

REVISIONS

© COPYRIGHT - By -

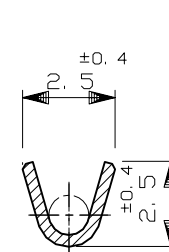
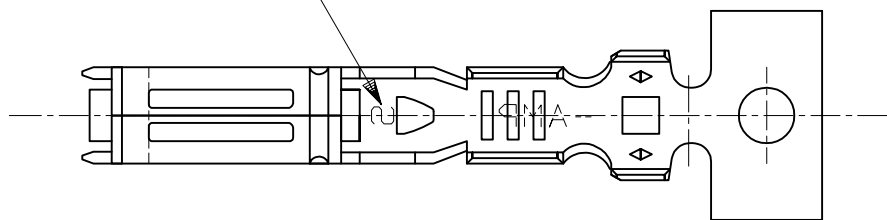
ALL RIGHTS RESERVED.

P	LTR	DESCRIPTION	DATE	DWN	APVD
G	REVISED	ECR-14-018500	18DEC2014	TS	YF

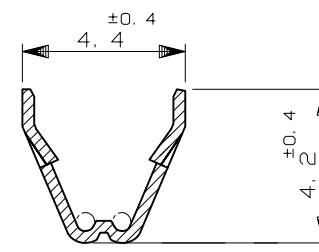


WIRE RANGE ID MARK
 ("S" SIZE MARK)
 (STAMPED ON BOTTOM)

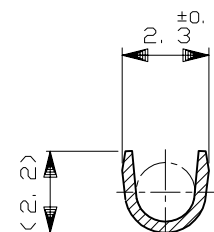
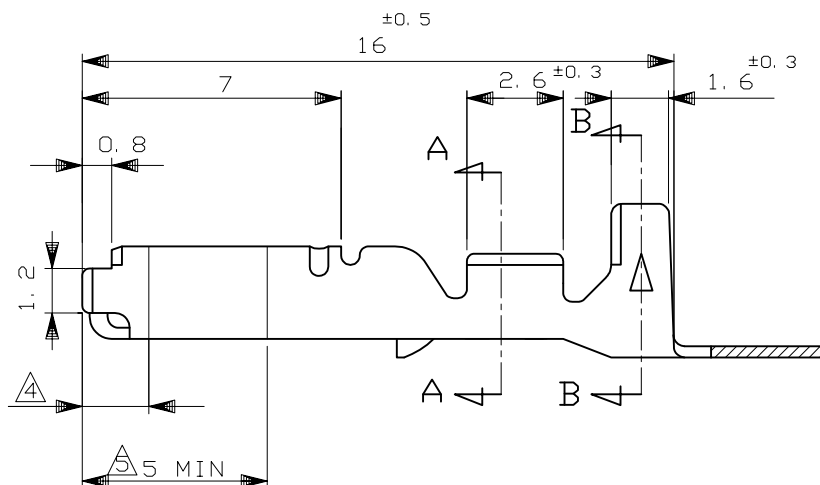
端子識別マーク"S"
 (底面に刻印)



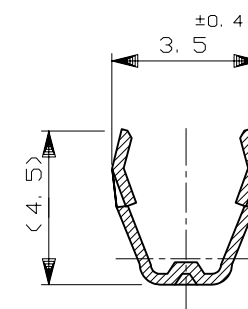
断面 A-A
 SECT A-A



断面 B-B
 SECT B-B



断面 A-A
 SECT A-A
 (175026のみ適用)
 (ONLY 175026)



断面 B-B
 SECT B-B
 (175026のみ適用)
 (ONLY 175026)

- 1. 製品規格 ; 108-5216, 108-5231, 108-5264
- 2. 取付適用規格 ; 114-5091
- 3. 部分金めっき (接触面のみ)
- 4. 識別用金めっき (全周)
- 5. 部分金めっき (両側のみ)

- 1. SPEC; 108-5216, 108-5231, 108-5264
- 2. APPLICATION SPEC; 114-5091
- 3. SELECTIVE GOLD PLATING (ONLY CONTACT SIDE)
- 4. GOLD PLATING FOR DISCERNMENT (ALL AROUND)
- 5. SELECTIVE GOLD PLATING (ONLY BOTH SIDES OF THE BOX)

WIRE RANGE AVS 0.2~0.3mm ² (AWG#24-#22)	INSULATION DIA. 1.4~1.9 mmφ
--	--------------------------------

バラ端子型番 L/P NUMBER	仕上 FINISH	材料 MATERIAL	型番 PART NUMBER
175026-7	部分金めっき SELECTIVE GOLD	黄銅 板厚0.3 BRASS +0.3	1-173630-2
175026-6	部分金めっき SELECTIVE GOLD	リン青銅 板厚0.3 PHOS BRO. +0.3	173630-7
175026-6	錫めっき済み PRE-TINNED	銅合金 板厚0.3 COPPER ALLOY +0.3	173630-6
175026-1	部分金めっき SELECTIVE GOLD	黄銅 板厚0.3 BRASS +0.3	173630-2
175026-1	錫めっき済み PRE-TINNED	黄銅 板厚0.3 BRASS +0.3	173630-1

THIS DRAWING IS A CONTROLLED DOCUMENT.

DWN T.SAGAWA 9/28'87
 CHK M.MATSUSAKA 10/6'87
 APVD M.NOBUCHI 10/7'87

TE Connectivity

070 SERIES RECEPTACLE CONTACT

SIZE A3 CAGE CODE 00779 DRAWING NO C=173630 RESTRICTED TO

SCALE 5:1 SHEET 1 of 1 REV G

TOLERANCE UNLESS OTHERWISE SPECIFIED: 一般公差	
0 < x ≤ 10	±0.2
10 < x ≤ 30	±0.25
30 < x ≤ 100	±0.3
ANGLE	±3°

DIMENSIONS:	TOLERANCES UNLESS OTHERWISE SPECIFIED:
mm	
0 PLC	±-
1 PLC	±-
2 PLC	±-
3 PLC	±-
4 PLC	±-
ANGLES	±-

MATERIAL	FINISH
SEE TABLE	SEE TABLE

X-ON Electronics

Largest Supplier of Electrical and Electronic Components

Click to view similar products for [Automotive Connectors](#) category:

Click to view products by [TE Connectivity](#) manufacturer:

Other Similar products are found below :

[003-018-000](#) [600858](#) [60403001](#) [60993906-B](#) [60993913-B](#) [629515004020001](#) [M902-2131](#) [M902-2161](#) [M902-2344](#) [72.330.1035.1](#)
[73.353.4028.0](#) [F118010](#) [F119300-B](#) [F132210](#) [F132210-B](#) [F166900](#) [F180100](#) [F258300](#) [F258300-B](#) [F294300-B](#) [F339100](#) [F339700](#) [F358300-](#)
[B](#) [F374110](#) [F407400](#) [F412210](#) [F427600](#) [F444110](#) [F487000](#) [F495100-B](#) [F500900-B](#) [F509500B-B](#) [770444-1](#) [776880-1](#) [827153-1](#) [881735-1](#)
[8N1515-32-24P](#) [9-1326727-8](#) [9-1326729-8](#) [925467-1](#) [925474-1](#) [928905-1](#) [936398-2](#) [964562-1](#) [964562-4](#) [964731-2](#) [965051-1](#) [968782-1](#)
[GT17SA-8DS-HU](#) [GT17VS-10DP-5.2CF](#)