

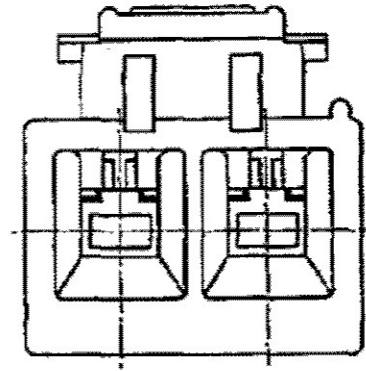
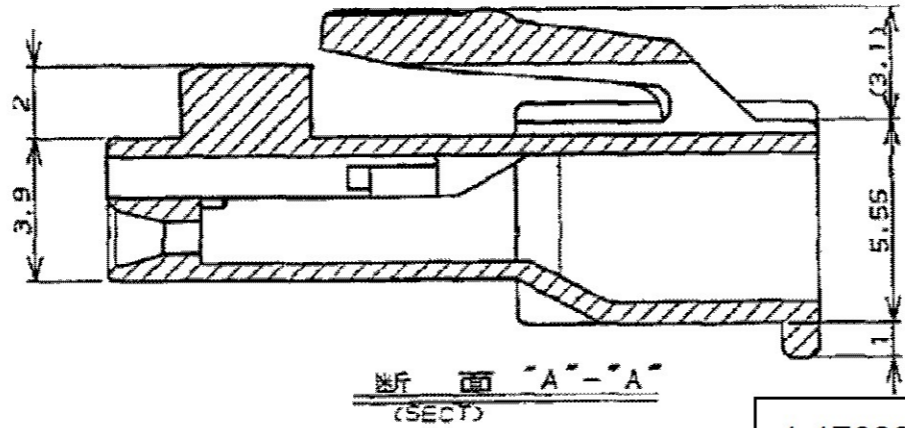
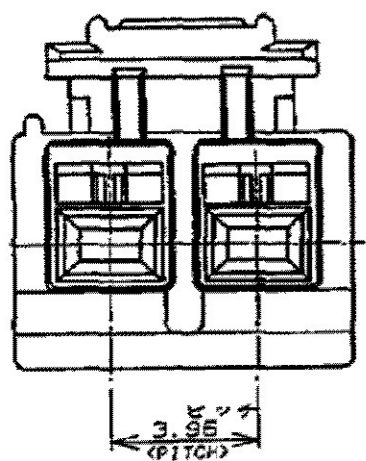
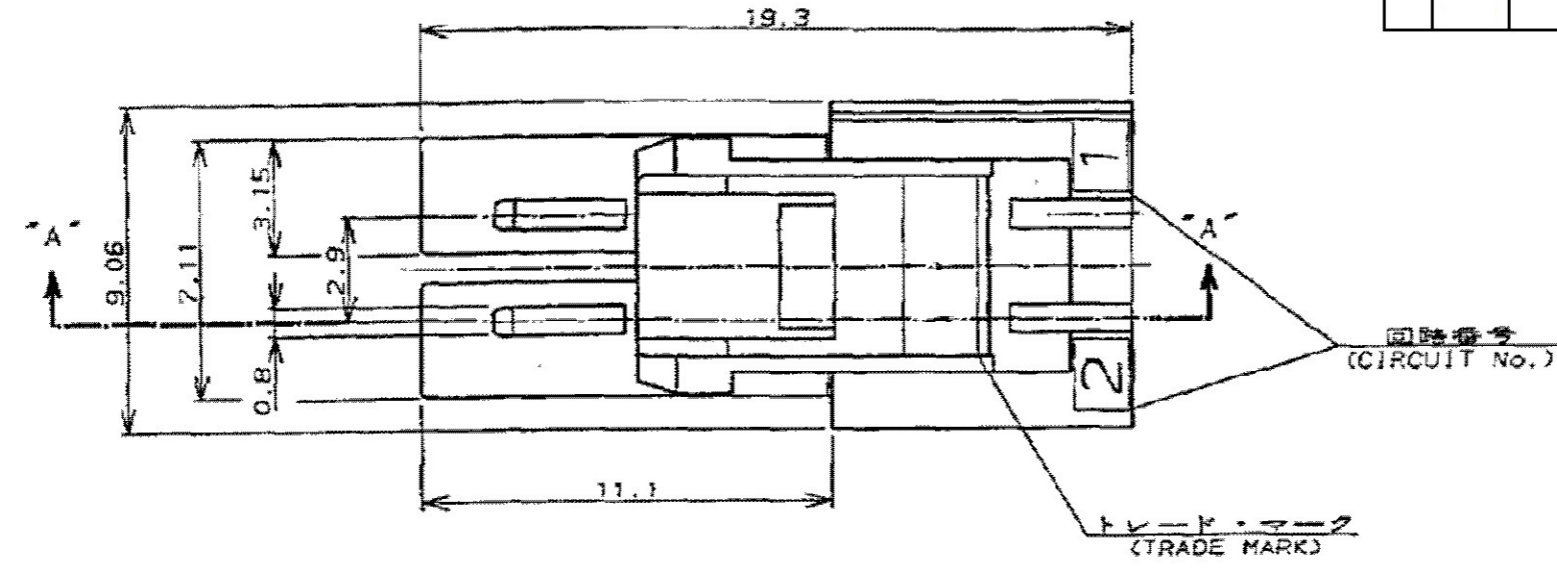
THIS DRAWING IS UNPUBLISHED.

RELEASED FOR PUBLICATION

ALL INTERNATIONAL RIGHTS RESERVED.

© COPYRIGHT

LOC	DIST	REVISIONS					
J	—	P	LTR	DESCRIPTION	DATE	DWN	APVD
			C5	REVISED PER ECR-17-018148	13DEC17	SC	BH



- 1. APPLICABLE CONTACT PART NUMBER;
REC CONTACT: 175152-□ (#20-#16AWG)
175151-□ (#26-#22AWG)
- 2. TO BE USED WITH THE CONTACT WHICH IS RATED 105°C MAX
- 3. MATERIAL: PA66, UL94 V-0, GWIT 775°C

1-176282-5	130°C MAX	△3	GREEN 绿	2	1-176271-5
1-176282-1	130°C MAX	△3	NATURAL 自然色		1-176271-1 _{△2}
176282-□ 176292-□	105°C MAX	PA66	BLACK 黒	2	176271-9
			BLUE 青		176271-6
			YELLOW 黄		176271-4
			RED 赤		176271-2
NATURAL 自然色				176271-1	
MATING CONN. PART NUMBER 嵌合相手型番	TEMPERATURE RATING 定格温度	TYPE 種類	HOUSING COLOR 色	Pos. 極数	PART NUMBER 型番
		MATERIAL 材料			

- 1. 適用端子型番;
リセコンタクト: 175152-□ (#20-#16AWG)
175151-□ (#26-#22AWG)
- 2. 適用コンタクトの使用温度は最大105°C

THIS DRAWING IS A CONTROLLED DOCUMENT.		DWN M.SHINDO 08NOV1989	TE TE Connectivity		
DIMENSIONS: mm		CHK Y.FUJITA 08NOV1989			
TOLERANCES UNLESS OTHERWISE SPECIFIED: ≤10 ±0.2 10<, ≤30 ±0.25 30< ±0.3		APVD Y.FUJITA 08NOV1989	NAME AMP UNIVERSAL POWER CONN. 3.96mm PITCH PLUG HOUSING 2 Pos. (SGL ROW) AMP ユニバーサルパワーコネクタ 2極 3.96mmピッチ キャップハウジング		
ANGLES FINISH ±3°		PRODUCT SPEC 108-5302	SIZE A3	CAGE CODE 00779	DRAWING NO C-176271
MATERIAL SEE TABLE		APPLICATION SPEC	RESTRICTED TO —		
		WEIGHT	SCALE NTS		
		CUSTOMER DRAWING	SHEET 1 OF 1		
			REV C5		

X-ON Electronics

Largest Supplier of Electrical and Electronic Components

Click to view similar products for [Power to the Board](#) category:

Click to view products by [TE Connectivity](#) manufacturer:

Other Similar products are found below :

[10131318-08512GRLF](#) [6450171-4](#) [6450552-7](#) [6600323-8](#) [6643429-1](#) [6646040-2](#) [6651939-1](#) [6766604-1](#) [120959-1](#) [1393557-2](#) [1393532-2](#)
[1393532-3](#) [1393532-4](#) [1393557-1](#) [1600812-5](#) [1-6450861-2](#) [1645595-1](#) [1743490-1](#) [1744132-7](#) [1761122-1](#) [1766169-1](#) [1766250-1](#) [18362](#)
[1892109-1](#) [1-967627-6](#) [2226808-1](#) [2-6450860-5](#) [2-6450860-6](#) [2-6450870-0](#) [93003-0502](#) [953552-1](#) [1-6450161-4](#) [1-6450850-6](#) [1645526-2](#) [1-](#)
[6600130-0](#) [1743419-1](#) [1766150-1](#) [2005243-2](#) [211110-1](#) [2-6600130-2](#) [TE34-12-16P-F0](#) [5-6450830-6](#) [5646956-4](#) [36662-0005](#) [40585-3000](#) [4-](#)
[6450830-9](#) [4-6600333-3](#) [51142-0214](#) [10134048-911LF](#) [10130248-005LF](#)