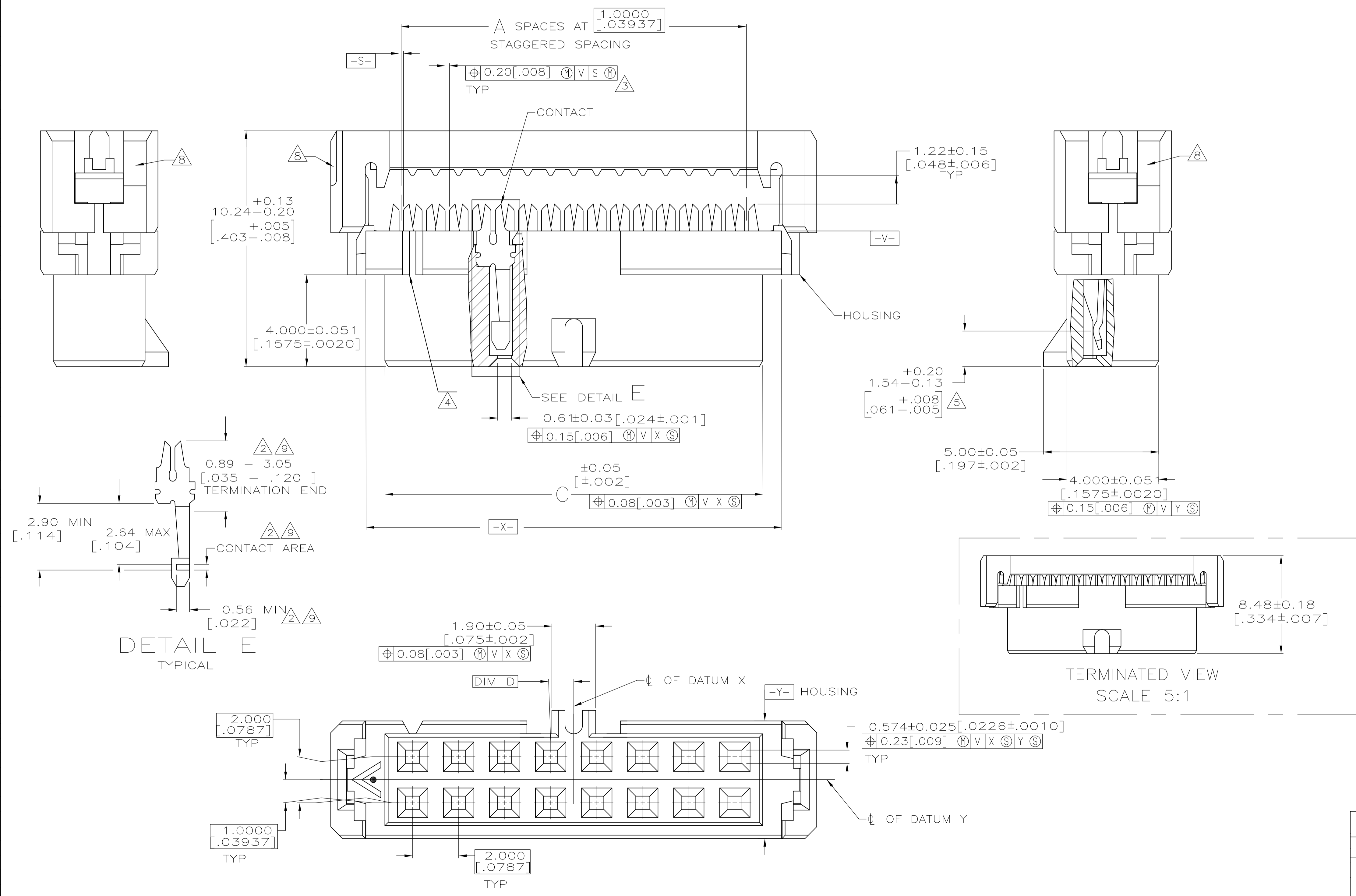


- 1 MOLDED PARTS: POLYESTER, UL RATED 94V-0, BLACK. CONTACTS: BERYLLIUM COPPER.
- 2 2.54 μm [.000100] MIN TIN-LEAD ON TERMINATION END, 0.76 μm [.000030] MIN GOLD ON CONTACT AREA, ALL OVER 1.27 μm [.000050] MIN NICKEL.
- 3 POSITION TOLERANCE APPLIES 0.76 [.030] ABOVE DATUM V.
- 4 POSITION NUMBER 1 INDICATOR.
- 5 ELECTRICAL ENGAGEMENT ZONE.
- 6 RECOMMENDED 28 AWG RIBBON CABLE, 0.61 - 0.97 [.024 - .038] THICK PVC, 1.0000 [.03937] PITCH. AMP LOGO ORIENTATION IS OPTIONAL.
- 7 RECESS ON EACH END, OPPOSITE CORNER.
- 8 0.13 μm [.000005] MIN GOLD ON TERMINATION END, 0.76 μm [.000030] MIN GOLD ON CONTACT AREA, ALL OVER 1.27 μm [.000050] MIN NICKEL.
- 10 MOLD GATE PROJECTION ON EITHER END OF COVER TO BE EXCLUDED FROM DIMENSION 'B' MEASUREMENT.



CONTACT FINISH	D	C	B	A	NO OF POSN	PART NO
	12.40	17.15	11	12	3-111623-1	
	12.40	17.15	11	12	1-111623-7	
	8.41	13.18	7	8	3-111623-0	
	8.41	13.18	7	8	1-111623-6	
	22.40	27.18	21	22	2-111623-9	
	22.40	27.18	21	22	1-111623-5	
	34.42	39.17	33	34	2-111623-8	
	34.42	39.17	33	34	1-111623-4	
	24.41	29.18	23	24	2-111623-7	
	24.41	29.18	23	24	1-111623-3	
	50.39	55.17	49	50	2-111623-6	
	50.39	55.17	49	50	1-111623-1	
	44.40	49.17	43	44	2-111623-5	
	44.40	49.17	43	44	1-111623-8	
	40.41	45.19	39	40	2-111623-4	
	40.41	45.19	39	40	1-111623-9	
	30.40	35.18	29	30	2-111623-3	
	30.40	35.18	29	30	1-111623-2	
	20.40	25.17	19	20	2-111623-1	
	20.40	25.17	19	20	1-111623-0	
	16.41	21.18	15	16	2-111623-0	
	16.41	21.18	15	16	1-111623-9	
	14.40	19.18	13	14	1-111623-8	
	14.40	19.18	13	14	1-111623-7	
	10.41	15.16	9	10	1-111623-1	
	10.41	15.16	9	10	1-111623-0	
	12.40	17.15	11	12	111623-9	
	8.41	13.18	7	8	111623-8	
	22.40	27.18	21	22	111623-7	
	22.40	27.18	21	22	111623-6	
	34.42	39.17	33	34	111623-5	
	34.42	39.17	33	34	111623-4	
	24.41	29.18	23	24	111623-3	
	24.41	29.18	23	24	111623-2	
	50.39	55.17	49	50	111623-1	
	50.39	55.17	49	50	111623-0	
	44.40	49.17	43	44	111623-9	
	44.40	49.17	43	44	111623-8	
	40.41	45.19	39	40	111623-7	
	40.41	45.19	39	40	111623-6	
	30.40	35.18	29	30	111623-5	
	30.40	35.18	29	30	111623-4	
	20.40	25.17	19	20	111623-3	
	20.40	25.17	19	20	111623-2	
	16.41	21.18	15	16	111623-1	
	16.41	21.18	15	16	111623-0	
	14.40	19.18	13	14	111623-9	
	14.40	19.18	13	14	111623-8	
	10.41	15.16	9	10	111623-7	
	10.41	15.16	9	10	111623-6	
	10.41	15.16	9	10	111623-5	
	10.41	15.16	9	10	111623-4	
	10.41	15.16	9	10	111623-3	
	10.41	15.16	9	10	111623-2	
	10.41	15.16	9	10	111623-1	
	10.41	15.16	9	10	111623-0	

THIS DRAWING IS A CONTROLLED DOCUMENT. DIMENSIONS: mm [INCHES]. TOLERANCES UNLESS OTHERWISE SPECIFIED: 0 PLC ± .008 [.003], 1 PLC ± .008 [.003], 2 PLC ± .008 [.003], 3 PLC ± .008 [.003], 4 PLC ± .008 [.003]. MATERIAL: POLYESTER. FINISH: CONTACTS: SEE TABLE. THIS DRAWING IS A CONTROLLED DOCUMENT. DIMENSIONS: mm [INCHES]. TOLERANCES UNLESS OTHERWISE SPECIFIED: 0 PLC ± .008 [.003], 1 PLC ± .008 [.003], 2 PLC ± .008 [.003], 3 PLC ± .008 [.003], 4 PLC ± .008 [.003]. MATERIAL: POLYESTER. FINISH: CONTACTS: SEE TABLE.

RECEPTACLE ASSY, POLARIZED, 2mm CL, AMP-LATCH. PRODUCT SPEC: 108-1372. APPLICATION SPEC: -. SIZE: A1. WEIGHT: -. CUSTOMER DRAWING. SCALE: 10:1. SHEET: 1 OF 1. REV: L2.

## X-ON Electronics

Largest Supplier of Electrical and Electronic Components

*Click to view similar products for [Headers & Wire Housings](#) category:*

*Click to view products by [TE Connectivity](#) manufacturer:*

Other Similar products are found below :

[95000-104TRLF](#) [10135584-644402LF](#) [DF62W-EP2022PCA](#) [95000-106TRLF](#) [DF62W-2022SCA](#) [DF62W-EP2022PC](#) [2203348](#) [DF62W-2022SC](#) [1084018](#) [1029039](#) [1084017](#) [802-10-012-10-002000](#) [1112640](#) [1112639](#) [000-34000](#) [0009482033](#) [0009507031](#) [57102-S06-03LF](#) [57202-S52-04LF](#) [PCN6-15S-2.5E](#) [0039019024](#) [58102-G61-06LF](#) [582553-1](#) [0009485154](#) [0009508121](#) [0022285053](#) [0050291907](#) [018731A](#) [LY20-4P-DT1-P1E-BR](#) [02.125.8002.8](#) [60101931](#) [60598-1 \(Cut Strip\)](#) [M1625-3R/100](#) [61062-3](#) [61082-181009](#) [636-1427](#) [638009-1](#) [641938-9](#) [641991-4](#) [644168-1](#) [647662-1](#) [65039-019ELF](#) [65817-002LF](#) [65817-015LF](#) [65863-015LF](#) [66207-023LF](#) [67016-026LF](#) [67046-001LF](#) [67095-007LF](#) [67230-005LF](#)