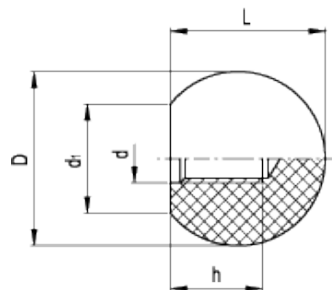


DIN 319

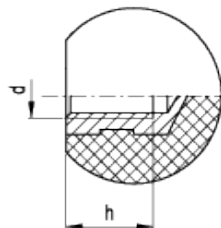
Ball knobs



DIN 319-C



DIN 319-E



technical informations

Material

- KU: phenolic based (PF) black Duroplast, glossy finish.
 - KU-C-RT: phenolic based (PF) red Duroplast, glossy finish available only with tapped blind hole.
 - KT: polyamide based (PA) black technopolymer, matte finish available only with tapped blind hole.
- Duroplast and technopolymer are resistant to solvents, oils, greases and other chemical agents.

Assembly

- Version C: tapped blind hole.
- Version E: with steel insert.

Standard Elements	Main dimensions			Mounting hole		Weight
Description	D	L	d ₁	d	h _{min}	g
DIN 319-KU-12-M4-C	12	11.2	6	M4	6.5	1
DIN 319-KT-16-M4-C	16	15	8	M4	7	3
DIN 319-KU-16-M4-C	16	15	8	M4	7	3
DIN 319-KU-16-M4-C-RT	16	15	8	M4	7	3
DIN 319-KU-16-M4-E	16	15	8	M4	6	3
DIN 319-KT-16-M5-C	16	15	8	M5	7	3
DIN 319-KU-16-M5-C	16	15	8	M5	7	3
DIN 319-KU-16-M5-C-RT	16	15	8	M5	7	3
DIN 319-KT-20-M5-C	20	18	12	M5	9	6
DIN 319-KU-20-M5-C	20	18	12	M5	9	6
DIN 319-KU-20-M5-C-RT	20	18	12	M5	9	6
DIN 319-KT-20-M5-E	20	18	12	M5	7.5	9
DIN 319-KU-20-M5-E	20	18	12	M5	7.5	9
DIN 319-KT-20-M6-C	20	18	12	M6	9	6
DIN 319-KU-20-M6-C	20	18	12	M6	9	5
DIN 319-KU-25-M5-C	25	22.5	15	M5	11	10
DIN 319-KT-25-M6-C	25	22.5	15	M6	11	10
DIN 319-KU-25-M6-C	25	22.5	15	M6	11	10
DIN 319-KU-25-M6-C-RT	25	22.5	15	M6	11	10
DIN 319-KT-25-M6-E	25	22.5	15	M6	9	13
DIN 319-KU-25-M6-E	25	22.5	15	M6	9	13
DIN 319-KT-25-M8-C	25	22.5	15	M8	11	10
DIN 319-KU-25-M8-C	25	22.5	15	M8	11	10
DIN 319-KU-25-M8-E	25	22.5	15	M8	9	18
DIN 319-KU-30-M8-C	30	28	15	M8	14.5	19
DIN 319-KU-32-M6-C	32	29	18	M6	14.5	20
DIN 319-KT-32-M8-C	32	29	18	M8	14.5	25
DIN 319-KU-32-M8-C	32	29	18	M8	14.5	22
DIN 319-KU-32-M8-C-RT	32	29	18	M8	14.5	22
DIN 319-KT-32-M8-E	32	29	18	M8	12	22
DIN 319-KU-32-M8-E	32	29	18	M8	12	22
DIN 319-KT-32-M10-C	32	29	18	M10	14.5	22
DIN 319-KU-32-M10-C	32	29	18	M10	14.5	22
DIN 319-KU-35-M10-C	35	32.5	18	M10	18	29
DIN 319-KU-35-M10-C-RT	35	32.5	18	M10	18	28
DIN 319-KU-40-M8-C	40	37	22	M8	18	35
DIN 319-KT-40-M10-C	40	37	22	M10	18	43
DIN 319-KU-40-M10-C	40	37	22	M10	18	43
DIN 319-KU-40-M10-C-RT	40	37	22	M10	18	43
DIN 319-KU-40-M10-E	40	37	22	M10	15	55
DIN 319-KT-40-M12-C	40	37	22	M12	18	42
DIN 319-KU-40-M12-C	40	37	22	M12	18	42

DIN 319-KU-50-M12-C	50	46	27	M12	21	83
DIN 319-KU-50-M12-C-RT	50	46	27	M12	21	83
DIN 319-KU-50-M12-E	50	46	27	M12	18	107



STANDARD MACHINE ELEMENTS WORLDWIDE

X-ON Electronics

Largest Supplier of Electrical and Electronic Components

Click to view similar products for [Knobs & Dials](#) category:

Click to view products by [Elesa & Ganter](#) manufacturer:

Other Similar products are found below :

[61-9028.20](#) [61-9028.9](#) [8529](#) [8573](#) [9-1437622-4](#) [11K5015-EMNB](#) [11K5019-ECNB](#) [11K5020-KLAB](#) [11K5028-JMNG](#) [11K5048-KMNB](#)
[11K5014-EMNB](#) [11K5015-EMNG](#) [11K5019-EMNB](#) [11K5029-KMNG](#) [P400S-08-D6-N](#) [K6510](#) [KNSL500B1/8](#) [AL811BA18](#) [420031B18](#)
[5006](#) [KB700BA1/4](#) [KS700B14](#) [411](#) [4-1437621-3](#) [420065A14AL](#) [5149A](#) [52-928.20](#) [52-928.60](#) [52-928.9](#) [8517](#) [8546](#) [8570](#) [8572](#) [H-516-3A](#)
[P861H-0X-S6](#) [8544](#) [11K5014-JMNG](#) [11K5014-KMNG](#) [11K5014-ECNG](#) [5700E](#) [KA500B18](#) [KFS600B14](#) [KN900AB14](#) [KFS500B14](#)
[KNS501B18](#) [PKD60B1018](#) [PK1100B18](#) [PKES140B14](#) [PKES150B14](#) [PKJT70B14](#)