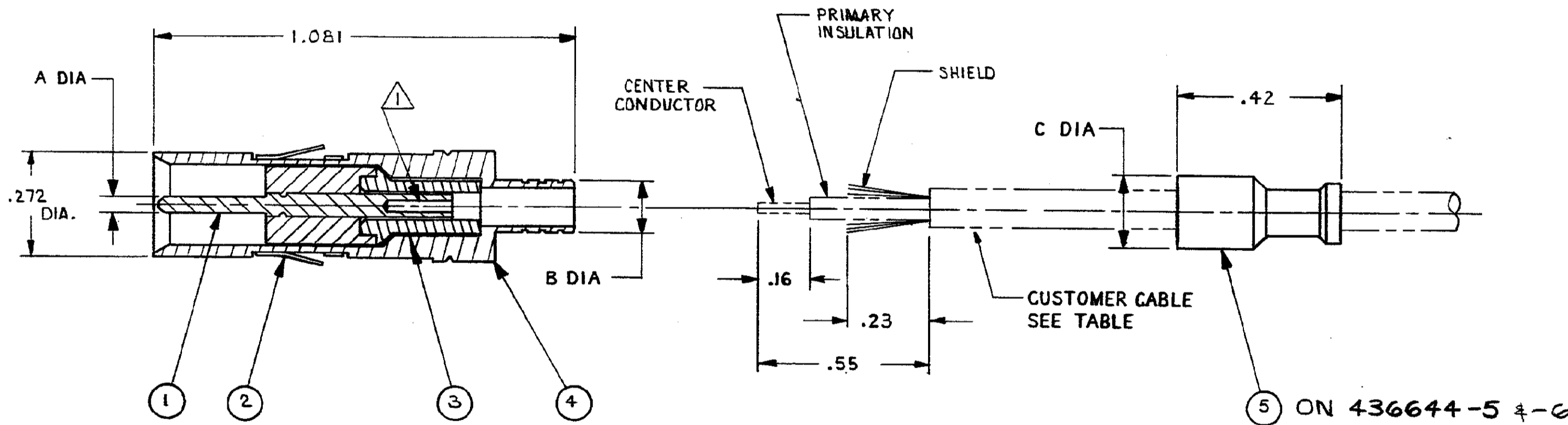
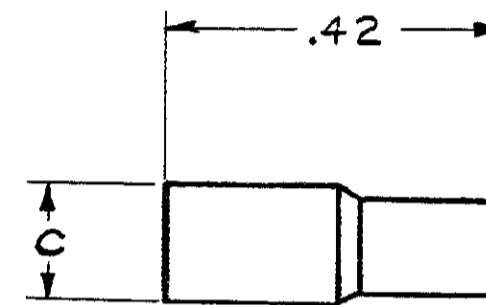
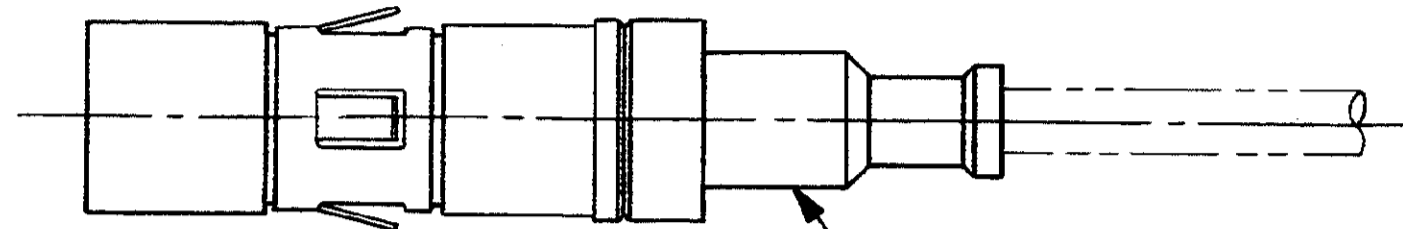


THIS DRAWING IS UNPUBLISHED. RELEASED FOR PUBLICATION, 19
 © COPYRIGHT 19 BY AMP INCORPORATED, HARRISBURG, PA. ALL INTERNATIONAL RIGHTS RESERVED. AMP PRODUCTS MAY BE COVERED BY U.S. AND FOREIGN PATENTS AND/OR PATENTS PENDING.

P	F	ZONE	LTR	DESCRIPTION	DATE	APPROVED
			Q	RELEASED TO CUSTOMER	12-22-83	RS
			A	REVISED PIN SLEEVE PICTURE	2-6-84	CO
✓	✓		B	WAS 83-17745-2 SH2 NPR S2677	3-5-84	DJH
✓	✓		G	1.081 WAS 1.075, ECN S2783	7-30-84	RS
✓	✓		D	ADDED CRIMPER NO'S, REV'D CABLE PICT, ECN S2828	9-20-84	JM
✓	✓		E	REVISED ECN S3099	6-12-85	RV
			F	REVISED ECN S3296	2-11-86	RV
				ADDED -5 NPR S3297	2/14/86	RV
				ADDED -2, -3 & -4 (PREASSIGNED)		
✓	✓		G	REVISED ECN S4056	6-18-87	CJT-BS
✓	✓		H	REV PER ECN DF-0350	2-2-88	NR 1871
✓	✓		J	ADDED -6	3-30-88	1871
✓	✓		K	REV PER ECN DF-1223	T.W.V-9-89	1871



58343-1	.22	.183	.039-.040	RG-180	328664	436643-3	436641-2	436585-4	436642-1	436644-6
58343-1	.22	.183	.029-.030	RG-180	328664	436643-3	436641-2	436585-4	436642-2	436644-5
—	.17	.110	.029-.030	RAYCHEM 9530H1014-9X	—	—	—	—	—	—4
—	.17	.110	.039-.040	RG-142	—	—	—	—	—	—3
58251-1	.17	.110	.029-.030	RG-179	328666	436643-1	436641-1	436585-4	436642-2	—2
58251-1	.17	.110	.039-.040	RG 174/U, 188,316	328666	436643-1	436641-1	436585-4	436642-1	436644-1
FERRULE CRIMP TOOL	C	B	A	WIRE TYPE	⑤ FERRULE	④ BARREL	③ SLEEVE	② SPRING	① PIN & SLEEVE ASSY	KIT PART NO.

- ① CRIMP CENTER CONDUCTOR WITH HAND TOOL M309, WITH DANIELS POSITIONER TP735.
- ② CRIMP BRAID BETWEEN BARREL AND FERRULE WITH TOOL SPECIFIED IN TABLE.
- 3. REFER TO IS 6911 FOR COMPLETE ASSY PROCEDURE.

UNLESS OTHERWISE SPECIFIED DIMENSIONS ARE IN INCHES. TOLERANCES ON: DECIMALS ±.02 ANGLES	CONTRACT NO		AMP AMP INCORPORATED Harrisburg, Pa. 17105		
	MATERIAL	DR R. Stone 12-22-83			
FINISH	APPD R. Stone 12-28-83		SIZE C	FSCM NO 00779	DRAWING NO 436644
	OTHER APPD		SCALE 4:1		SHEET 1 OF 1

X-ON Electronics

Largest Supplier of Electrical and Electronic Components

Click to view similar products for [RF Connectors](#) / [Coaxial Connectors](#) category:

Click to view products by [TE Connectivity](#) manufacturer:

Other Similar products are found below :

[R125315120](#) [8915-1511-000](#) [89674-0827](#) [5916-1103-603](#) [0106-001-000](#) [6-0001-3](#) [6001-7071-019](#) [6002-7051-003](#) [6002-7551-202](#) [6059674-1](#) [619550-1](#) [630059-000](#) [M39012/25-0021](#) [M39012/79-3008](#) [M39030/3-01N](#) [M39030/3-03N](#) [M3933/25-36N](#) [6500-7071-046](#) [6501-1071-002](#) [M83723/72W2457N](#) [6769](#) [CX050L2AQ](#) [7002-1541-010](#) [7002-1572-002](#) [7003-1572-002](#) [7004-1512-000](#) [7009-1511-004](#) [7010-1511-000](#) [7029-1511-060](#) [7101-1541-010](#) [7101-1571-002](#) [7105-1521-002](#) [7145-1521-002](#) [7209-1511-011](#) [7210-1511-012](#) [7210-1511-015](#) [7210-1511-019](#) [7210-1511-040](#) [7225-1512-050](#) [7242-1511-000](#) [73137-5015](#) [73251-0111](#) [73251-0672](#) [73276-1501](#) [73366-0013](#) [73404-2300](#) [73413-6080](#) [73415-5721](#) [7405-1521-005](#) [7405-1521-802](#)