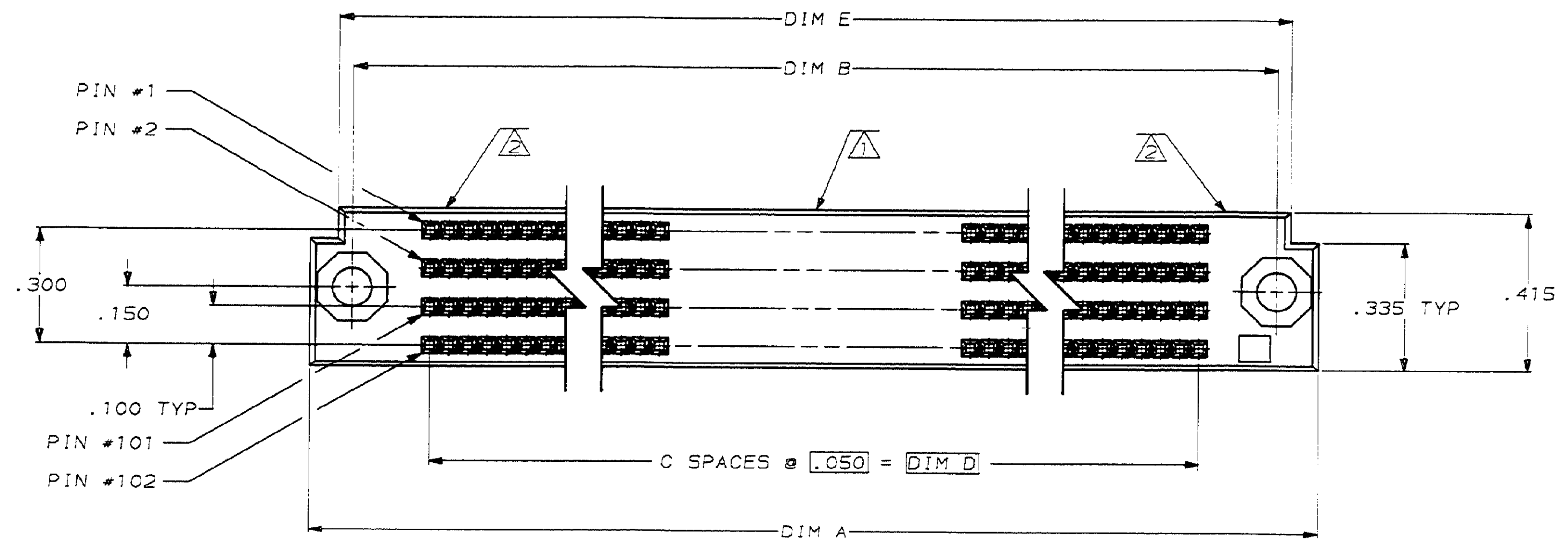
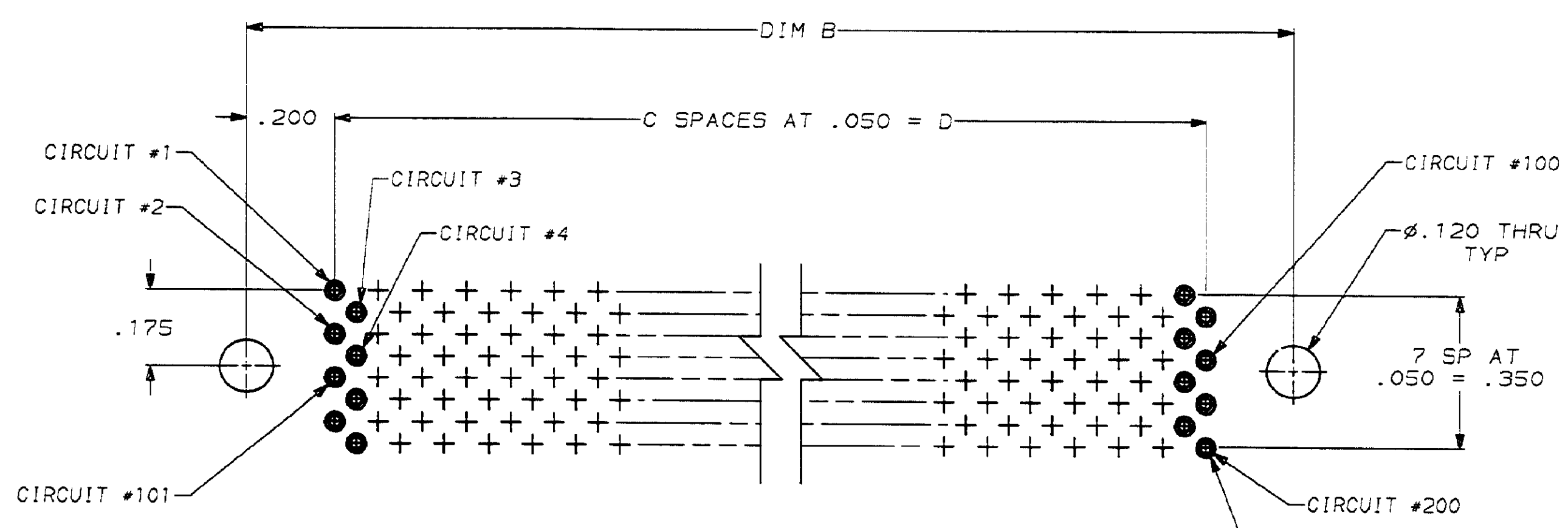
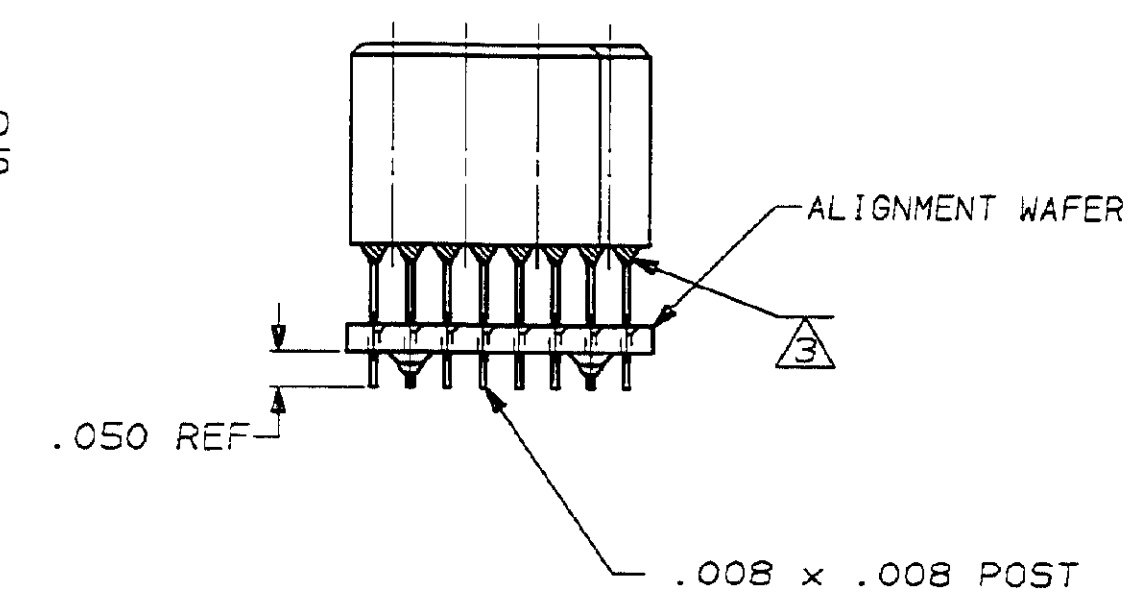
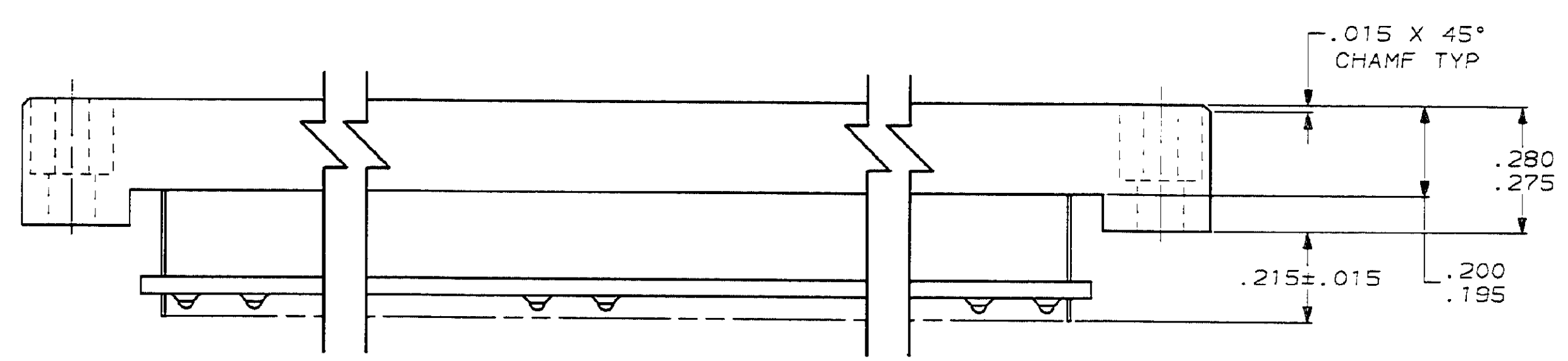


| PROJ | LOC | DIST | REVISIONS | | | | | |
|------|-----|------|-----------|-----|--------------------------|------|---------|----|
| 7739 | DF | F0 | ZONE | LTR | DESCRIPTION | DATE | APPD | |
| | | | 0 | | RELEASED PER 92-0135 | TA | 5-19-92 | DG |
| | | | A | | REVISED PER ECN DF-6586 | TA | 9-2-92 | DG |
| | | | B | | REV PER ECN DF-7320 | WDK | 5-5-93 | DG |
| | | | C | | REVISED PER 0600-0608-93 | TA | 8-3-93 | DG |



- △ AMP, PART NUMBER AND DATE CODE MARKED THIS SURFACE.
- △ CAVITY I.D. NUMBERS (SEE TABLE) MARKED ON ENDS, THIS SIDE ONLY.
- △ EPOXY ADDED TO BOTTOM OF HOUSING FOR SEALING.



| CAVITY IDENTIFICATION | DIM E | DIM D | C | DIM B | DIM A | NUMBER OF POSITIONS | PART NUMBER |
|-----------------------|-------|-------|----|-------|-------|---------------------|-------------|
| 1 - 150 | 4.200 | 3.700 | 74 | 4.100 | 4.345 | 300 | 448445-5 |
| 1 - 76 | 2.350 | 1.850 | 37 | 2.250 | 2.495 | 152 | 448445-4 |
| 1 - 160 | 4.450 | 3.950 | 79 | 4.350 | 4.595 | 320 | 448445-3 |
| 1 - 100 | 2.950 | 2.450 | 49 | 2.850 | 3.095 | 200 | 448445-2 |
| 1 - 60 | 1.950 | 1.450 | 29 | 1.850 | 2.095 | 120 | 448445-1 |

| DO NOT SCALE PRINT. UNLESS SPECIFIED DIMENSIONS IN INCHES TOLERANCES ON: | | DR 5-19-92 T. ALEXANDER | | AMP AMP Incorporated Harrisburg, PA 17105-3608 | |
|--|-------|---------------------------|--|--|--|
| 2 PLC DEC ± | 0.005 | CHK 5-19-92 D. GUTTER | | NAME RCPT ASSY 4 ROW MINI-BOX | |
| 3 PLC DEC ± | 0.005 | APPD 5-19-92 D. GUTTER | | SIZE D | |
| ANGLES ± | - | APPD 7-23-92 T. ALEXANDER | | CAGE CODE 00779 | |
| MATERIAL HSG-LIQUID CRYSTAL POLYMER, COLOR: GRAY CONTACT-COPPER ALLOY | | PRODUCT SPEC - | | DRAWING NO 448445 | |
| FINISH .000050 MIN GOLD IN CONTACT AREA, TIN-LEAD SOLDER TAILS | | APPLICATION SPEC - | | SCALE 4:1 | |
| | | WEIGHT - | | SHEET 1 OF 1 | |

P.C. BOARD LAYOUT
 200 POSN SHOWN
 CONNECTOR SIDE OF BOARD

X-ON Electronics

Largest Supplier of Electrical and Electronic Components

Click to view similar products for [Headers & Wire Housings](#) category:

Click to view products by [TE Connectivity](#) manufacturer:

Other Similar products are found below :

[95000-104TRLF](#) [10135584-644402LF](#) [DF62W-EP2022PCA](#) [95000-106TRLF](#) [DF62W-2022SCA](#) [DF62W-EP2022PC](#) [2203348](#) [DF62W-2022SC](#) [1084018](#) [1029039](#) [1084017](#) [802-10-012-10-002000](#) [1112640](#) [1112639](#) [000-34000](#) [0009482033](#) [0009507031](#) [57102-S06-03LF](#) [57202-S52-04LF](#) [PCN6-15S-2.5E](#) [0039019024](#) [58102-G61-06LF](#) [582553-1](#) [0009485154](#) [0009508121](#) [0022285053](#) [0050291907](#) [018731A](#) [LY20-4P-DT1-P1E-BR](#) [02.125.8002.8](#) [60101931](#) [60598-1 \(Cut Strip\)](#) [M1625-3R/100](#) [61062-3](#) [61082-181009](#) [636-1427](#) [638009-1](#) [641938-9](#) [641991-4](#) [644168-1](#) [647662-1](#) [65039-019ELF](#) [65817-002LF](#) [65817-015LF](#) [65863-015LF](#) [66207-023LF](#) [67016-026LF](#) [67046-001LF](#) [67095-007LF](#) [67230-005LF](#)