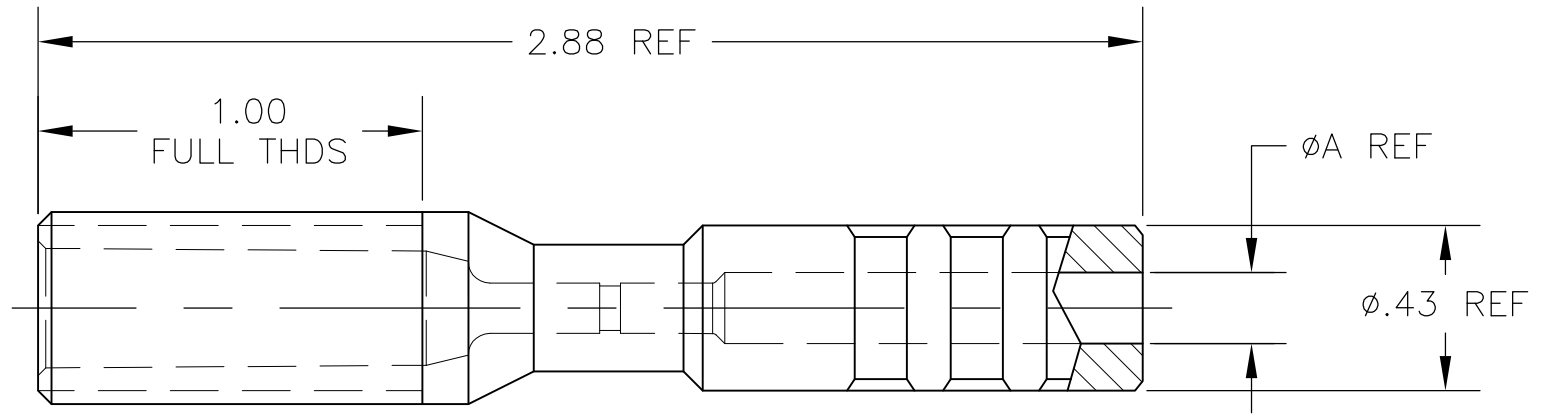
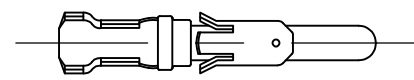


THIS DRAWING IS UNPUBLISHED. RELEASED FOR PUBLICATION  
 © COPYRIGHT - By - ALL RIGHTS RESERVED.

LOC	DIST	REVISIONS			
P	LTR	DESCRIPTION	DATE	DWN	APVD
DF	S5	R	REV PER ECO-12-013185	18JUL12	PY DE



1. MAX VOLTAGE: 20 KVDC

	22-20	90067-2	1-66400-0	.302	5-861753-4
	18-16	90067-2	1-66099-5	.185	5-861753-3
	18-16	90067-2	1-66099-5	.302	5-861753-2
	22-20	90067-2	1-66400-0	.185	5-861753-1
OBSOLETE	14	90208-1	66361-2	.302	861753-8
OBSOLETE	14	90208-1	66361-2	.185	861753-7
OBSOLETE	NONE	NONE	-	.302	861753-6
OBSOLETE	NONE	NONE	-	.185	861753-5
	22-20	90067-2	66400-1	.302	861753-4
	18-16	90067-2	66099-2	.185	861753-3
	18-16	90067-2	66099-2	.302	861753-2
	22-20	90067-2	66400-1	.185	861753-1
	WIRE GAUGE	CRIMP TOOL	L. P. PIN	DIM A	PART NUMBER

THIS DRAWING IS A CONTROLLED DOCUMENT.		DWN C.C.THOMAS 12-JUL-96	TE Connectivity		
DIMENSIONS: INCHES		CHK S.GLATFELTER 12-AUG-96			
TOLERANCES UNLESS OTHERWISE SPECIFIED:		APVD S.GLATFELTER 12-AUG-96	NAME KIT RECEPTACLE, LGH		
0 PLC ± - 1 PLC ± - 2 PLC ± - 3 PLC ± - 4 PLC ± - ANGLES ± -		PRODUCT SPEC -	-		
MATERIAL -		FINISH -	APPLICATION SPEC -	SIZE A3	CAGE CODE 00779
		WEIGHT -	DRAWING NO C-861753		RESTRICTED TO -
CUSTOMER DRAWING			SCALE 2:1	SHEET 1 OF 1	REV R

## X-ON Electronics

Largest Supplier of Electrical and Electronic Components

*Click to view similar products for [Standard Circular Connector](#) category:*

*Click to view products by [TE Connectivity](#) manufacturer:*

Other Similar products are found below :

[C015](#) [10F006](#) [001](#) [1](#) [5M2530B10P](#) [600259N006](#) [600273N007](#) [600432N009](#) [6280-2PG-519](#) [6280-3PG-311](#) [6280-3SG-311](#) [6280-7SG-3DC](#)  
[6280-7SG-522](#) [6282-5PG-311](#) [6282-6PG-519](#) [6282-8SG-311](#) [6283-11](#) [6283-15](#) [6290](#) [6382-2PG-311](#) [6382-2PG-3DC](#) [6382-2SG-321](#) [6382-2SG-3DC](#) [6382-4SG-516](#) [67-03E20-37P](#) [681-PMG](#) [CXS3102A14S2P](#) [CXS3102A181S](#) [CXS3106A14S6S](#) [MB12P-1](#) [MB12R-6](#) [7251-2PG-300](#) [7251-2SG-300](#) [7251-4PG-300](#) [7251-4SG-300](#) [7251-5PG-300](#) [7251-5SG-300](#) [7251-6SG-300](#) [7251-7PG-300](#) [7251-8PG-300](#) [7271-6SG-300](#) [7282-3PG-300-CH3](#) [73000005663](#) [75-190216-08S](#) [75-190218-10P](#) [75-474118-10P](#) [75-474618-01S](#) [75-474620-07P](#) [799539-000](#) [MI8-SE](#) [80-190222-18P](#) [805-005-07NF11-19PC](#) [805-005-07NF15-7PA](#)