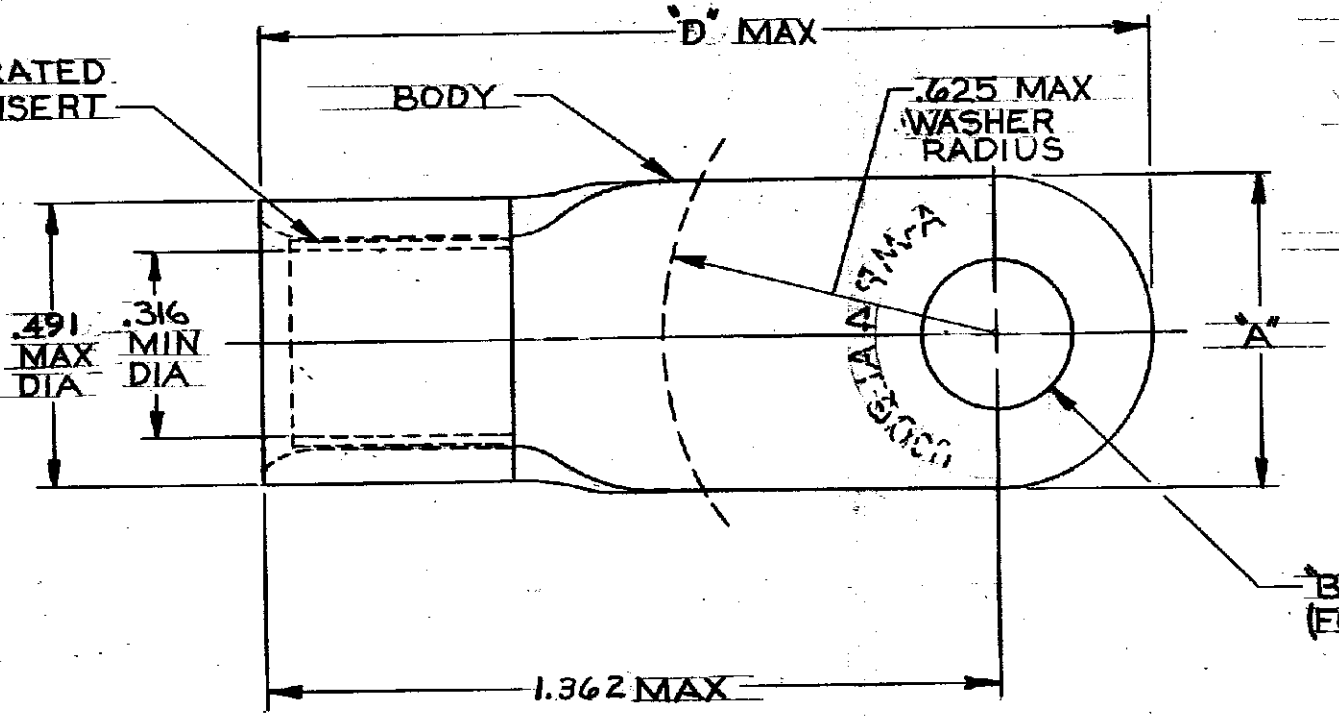


© BY AMP INCORPORATED. ALL RIGHTS RESERVED. AMP PRODUCTS ARE PATENTS AND/OR PATENTS PENDING.

Unpublished copy without written permission

PERFORATED INSERT



TONGUE MATERIAL THK = .057 ±.003

REVISIONS				
ZONE	LTR	DESCRIPTION	DATE	APPROVED
	0	PER NPS 66-1765-1768	11/15/66	DF
	A	REMOVED ENGRG. CONT PER REV NPS 66-1765-1768	11/16/67	RHW
	B	REV TITLE PER ECN PC-5545	12-6-68	RHW
	C	ADDED 50717-4 NPS 70-0004	1-21-70	FCY
	D	REVISED P-6293	4-17-70	FCY
	E	REVISED PER ECN P-6489	3-19-70	FCY
	F	ADDED 50717-5 NPS 75-1807	12-1-75	a 12-3-75
	G	REV PER G-1651	1/10/85	ppm
	H	OBsolete 48-5 G-2508	1/23/87	ppm

TABLE I

WIRE TERMINAL	SEE TABLE II	INSERT: BRASS (MIL-C-50) TIN PL (MIL-T-10727) .0003 MIN THK
		BODY: COPPER (QQ-C-576) TIN PL (MIL-T-10727)
QTY REQD	DESCRIPTION	PART NO. MATERIAL & FINISH

TABLE II

PART NO.	A	B	C	D	
<del>50717-5</del>	<del>.675</del>	<del>.55 ±.003</del>	<del>1/2</del>	<del>1.762</del>	OBsolete
<del>50717-4</del>	<del>.531</del>	<del>.174 ±.003</del>	<del>11</del>	<del>1.630</del>	
50717-3	.675	.390 ±.003	3/8	1.702	
50717-2		.328 ±.003	5/16		
50717-1	.531	.265 ±.003	1/4	1.630	
50717		.197 ±.003	10		

UNLESS OTHERWISE SPECIFIED DIM. ARE IN INCHES. TOLERANCES ON: DECIMALS ±.003 ANGLES ± 5°

CONTRACT NO. \_\_\_\_\_

DR. *A.C. Youngblood* 11-11-66

CHK. *J. Swabell* 11-15-66

APPD. *J. Swabell* 11-16-66

DESIGN APPD. \_\_\_\_\_

OTHER APPD. \_\_\_\_\_

HEAT TREAT. \_\_\_\_\_

FINISH SEE TABLE I

**AMP** AMP INCORPORATED HARRISBURG, PENNSYLVANIA

NAME: WIRE TERMINAL COPALUM-STRANDED/SOLID WIRE SIZE: #4AL-CU

SIZE: B CODE IDENT NO. 00779 NUMBER: 50717

SCALE: 4:1 WT CALC ACTUAL SHEET 1 OF 1

## X-ON Electronics

Largest Supplier of Electrical and Electronic Components

*Click to view similar products for [Terminals](#) category:*

*Click to view products by [TE Connectivity](#) manufacturer:*

Other Similar products are found below :

[HT-13-10](#) [71M-250-32-NB](#) [01-2065-1-0216](#) [00581P0075](#) [M10-10RX](#) [M10BCK](#) [60205-1](#) [604200-1](#) [60598-1-CUT-TAPE](#) [60617-1-C](#) [60873-1](#) [M14-516R/SK](#) [M14-6RSX](#) [M18-10FLX](#) [M18-8FBX](#) [M18-8R/LX](#) [M18BCK](#) [61314-6-C](#) [61-S](#) [61-SN-A](#) [62-NBM-A](#) [63-S](#) [640179-1](#) [640917-2-CUT-TAPE](#) [6501550002](#) [66107-2-C](#) [696683-1](#) [696834-1](#) [696861-1](#) [696931-1](#) [696999-1](#) [M8-516RK](#) [M86700006](#) [MA250DMFMX-A](#) [701-2007](#) [701-2307](#) [701-7761-03](#) [70F-110-32-PB](#) [718-N-A](#) [71M-187-20-NBL](#) [71M-250-32-NBL](#) [72F-187-20-NBL](#) [72M-250-32-NBL](#) [7310](#) [73F-250-32](#) [73F-250-32-NBL](#) [73F-250-32-NL](#) [F14-10C](#) [F-1M](#) [751-250](#)