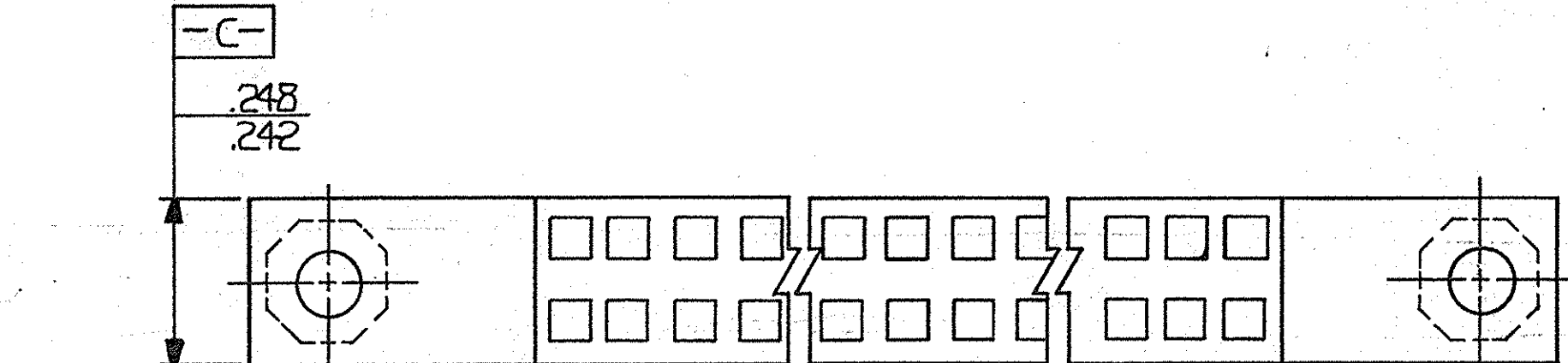
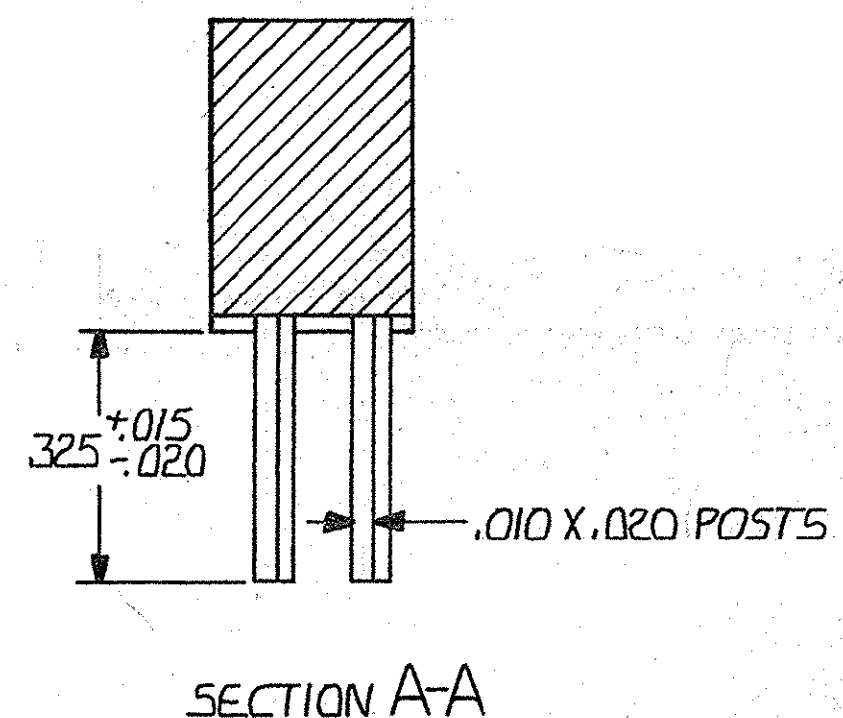
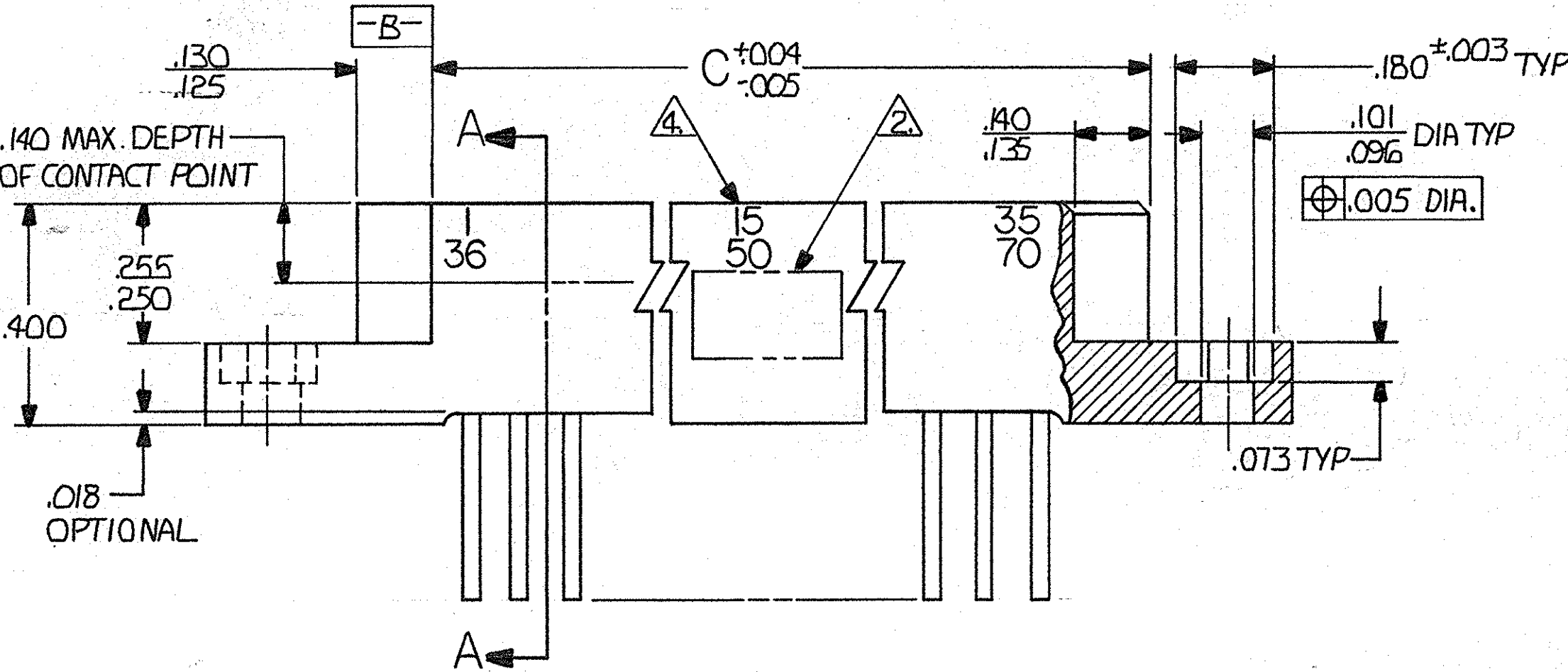
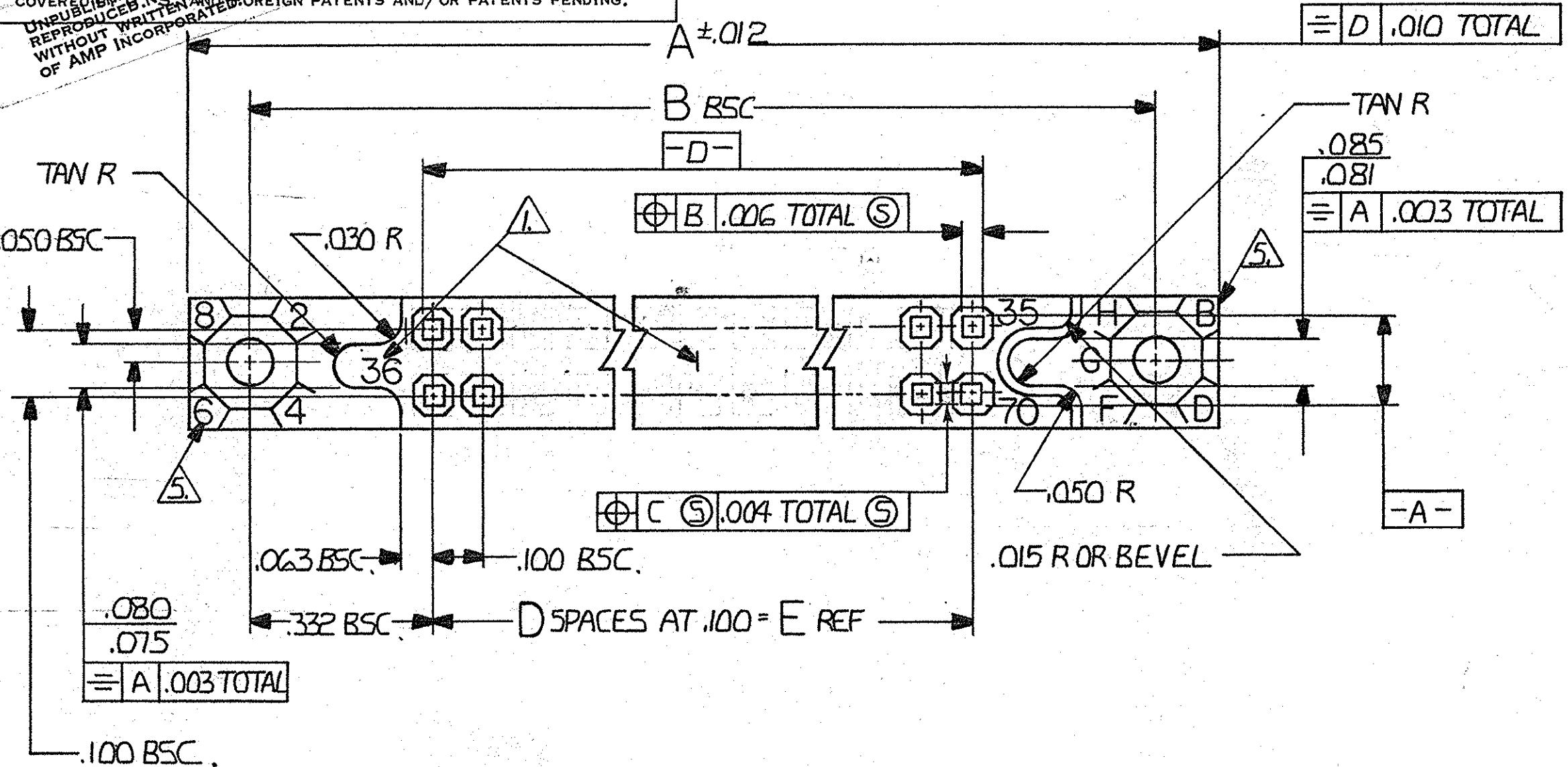


© COPYRIGHT 1977 BY AMP INCORPORATED, HARRISBURG, PA. ALL INTERNATIONAL PATENTS RESERVED. AMP INCORPORATED PRODUCTS COVERED BY U.S. PATENTS AND FOREIGN PATENTS AND/OR PATENTS PENDING. UNREPRODUCED BY ANY MEANS WITHOUT WRITTEN PERMISSION OF AMP INCORPORATED.

REVISIONS					
P	F	ZONE	LTR	DESCRIPTION	DATE APPROVED
			01	REVISED 5061 M.S.	2-2-77
			02	ADDED 4 P/N SHT. 2 6150 M.S.	7-25-79 R9
			03	MIL. P/N'S ASSIGNED	4-80 DLK 110
			04	REVISED PER ECN 8248	12-82 DJM
			A	REV. PER ECN AB-0535	01-02-85 JEA/11
			B	REV PER DF-2240	10-4-84 JST
			C	REV PER 0600-5859-96	4-98 JST
			D	REV PER ECO-05-013278	11-05 PY



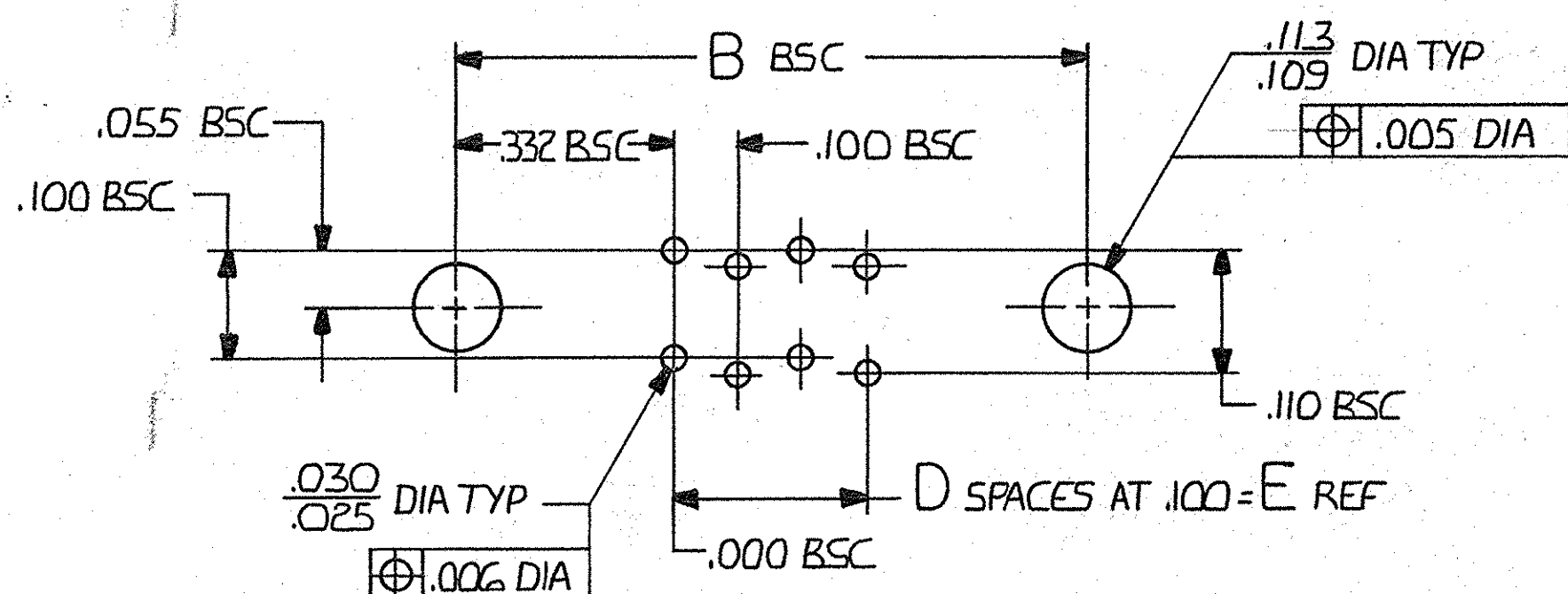
UNLESS OTHERWISE SPECIFIED DIMENSIONS ARE IN INCHES. TOLERANCES ON: DECIMALS ±.005 ANGLES		CONTRACT NO		PART NO	
MATERIAL		DR Robert Walser 11-12-76		AMP INCORPORATED Harrisburg, Pa.	
FINISH		CHK R. Williams 11-23-76		NAME BOX CONNECTOR RECEPTACLE ASSY .100 GRID EXTERNAL KEYING	
		APPD R. Williams 11-23-76		SIZE CODE IDENT NO DRAWING NO	
		APPD D. Co. Myers 11-29-76		C 00779 530776	
		DSGN APPD		SCALE 4-1 SHEET 1 OF 2	
		OTHER APPD		CUSTOMER DRAWING	

© COPYRIGHT 19 BY AMP INCORPORATED, HARRISBURG, PA.  
 ALL INTERNATIONAL RIGHTS RESERVED. AMP INCORPORATED PRODUCTS  
 COVERED BY U. S. PATENTS AND/OR PATENTS PENDING.

UNPUBLISHED WORK NOT TO BE REPRODUCED OR TRANSMITTED IN ANY FORM OR BY ANY MEANS WITHOUT WRITTEN PERMISSION OF AMP INCORPORATED.

REVISIONS			
FILE	ZONE	LTR	DESCRIPTION
✓	✓	✓	D (SEE SHEET 1 OF 2)

1. NUMBERS AND LINES INDICATING EVERY FIVE CAVITIES MOLDED OR MARKED ON MATING FACE.
2. AMP PART NUMBER DATE CODE, 00779 & MILITARY PART NUMBER MOLDED OR MARKED THIS AREA. SIDE OPTIONAL
3. MUST MEET ALL APPLICABLE REQUIREMENTS OF MIL-C-55302.
4. NUMBERS INDICATING EVERY FIVE CAVITIES MOLDED OR MARKED ON SIDE.
5. KEY POSITION IDENTIFICATION MOLDED ON SURFACES SHOWN.
6. USE EXTERNAL KEY NUMBER 530341-1 MATES WITH PART NUMBER 530339.
7. HOUSING MATERIAL: DIALYL PHTHALATE COLOR: BLUE PER MIL-M-14 TYPE 50G-F.
8. CONTACT MATERIAL: BERYLLIUM COPPER OR COPPER-NICKEL-SILICONE  
 FINISH: .000050 GOLD OVER NICKEL, TIN-LEAD ON TAILS



RECOMMENDED PRINTED CIRCUIT BOARD LAYOUT  
 (CONNECTOR SIDE)

M55302/27-201	71	140 <sup>70</sup>	6.900	69	7.165	7.565	7.855	140	1-530776-3
M55302/27-200	68	134 <sup>67</sup>	6.600	66	6.865	7.265	7.555	134	1-530776-2
M55302/27-199	66	130 <sup>65</sup>	6.400	64	6.665	7.065	7.355	130	1-530776-1
M55302/27-198	61	120 <sup>60</sup>	5.900	59	6.165	6.565	6.855	120	1-530776-0
M 55302/27-117	56	110 <sup>55</sup>	5.400	54	5.665	6.065	6.355	110	530776-9
M 55302/27-116	51	100 <sup>50</sup>	4.900	49	5.165	5.565	5.855	100	530776-8
M 55302/27-115	46	90 <sup>45</sup>	4.400	44	4.665	5.065	5.355	90	530776-7
M 55302/27-114	41	80 <sup>40</sup>	3.900	39	4.165	4.565	4.855	80	530776-6
M 55302/27-113	36	70 <sup>35</sup>	3.400	34	3.665	4.065	4.355	70	530776-5
M 55302/27-112	31	60 <sup>30</sup>	2.900	29	3.165	3.565	3.855	60	530776-4
M 55302/27-111	26	50 <sup>25</sup>	2.400	24	2.665	3.065	3.355	50	530776-3
M 55302/27-110	21	40 <sup>20</sup>	1.900	19	2.165	2.565	2.855	40	530776-2
M 55302/27-109	16	30 <sup>15</sup>	1.400	14	1.665	2.065	2.355	30	530776-1
M 55302									
PART NUMBER	CONTACT IDENTIFICATION NO		E	D	C	B	A	NO OF CONTACTS	PART NO

UNLESS OTHERWISE SPECIFIED DIMENSIONS ARE IN INCHES. TOLERANCES ON: DECIMALS ±.005 ANGLES ±	CONTRACT NO	AMP INCORPORATED Harrisburg, Pa.
	DR <i>Robert Weber</i> 11-12-76	
MATERIAL	CHK <i>R. Williams</i> 11-23-76	NAME BOX CONNECTOR RECEPTACLE ASSY .100 GRID EXTERNAL KEYING
	APPD <i>R. Williams</i> 11-23-76	
FINISH	APPD <i>R. Myers</i> 11-29-76	SIZE CODE IDENT NO DRAWING NO C 00779 530776
	DSGN APPD	
	OTHER APPD	SCALE 4-1 SHEET 2 OF 2

530776

## X-ON Electronics

Largest Supplier of Electrical and Electronic Components

*Click to view similar products for [Rectangular MIL Spec Connectors](#) category:*

*Click to view products by [TE Connectivity](#) manufacturer:*

Other Similar products are found below :

[006-1169-16](#) [CSR31343-0001-00000](#) [CSR31346-0001-A0001](#) [CSR31899-0001-00000](#) [CSR31900-0001-A0001](#) [CTJ-3D-05](#) [CTS-S16/16](#)  
[M55302/57A36X](#) [M55302/58-A70Y](#) [65002-062](#) [65008-D08](#) [CY4602-000](#) [732-8020-01](#) [732-8021-02 B](#) [77058-22-55PN](#) [81542-20](#)  
[86.030.0053.0](#) [1241346-1](#) [RM252-020-311-2900](#) [DMC-M 08-16 SNE](#) [1589051-4](#) [BACC65CAMA](#) [BACC65CAMN](#) [BACC65CP1PN](#)  
[BACI10BC1220PN](#) [18023-9](#) [HSB-D4S03DM222X](#) [2217548-1](#) [891-009-15SA2-BRT1T](#) [SIM2S100A](#) [1604996-2](#) [SMD25PN90L-4055](#)  
[1925036-4](#) [220A012-25225-0](#) [22628-10-6P-791](#) [CSR31343-0001-A0001](#) [CSR31899-0001-A0001](#) [CSR31900-0001-00000](#) [33526M11-08PD](#)  
[RE04-212S](#) [CTD160E01F-6148](#) [CTJ112E03B](#) [CTJ122E02D-8000](#) [CTJ-3D-12](#) [CTJ920E06N-513](#) [CTJ920E12N-513](#) [CTL-16-090](#) [CTR06-](#)  
[5100SY](#) [M55302/63A20H](#) [M55302/66-30H](#)