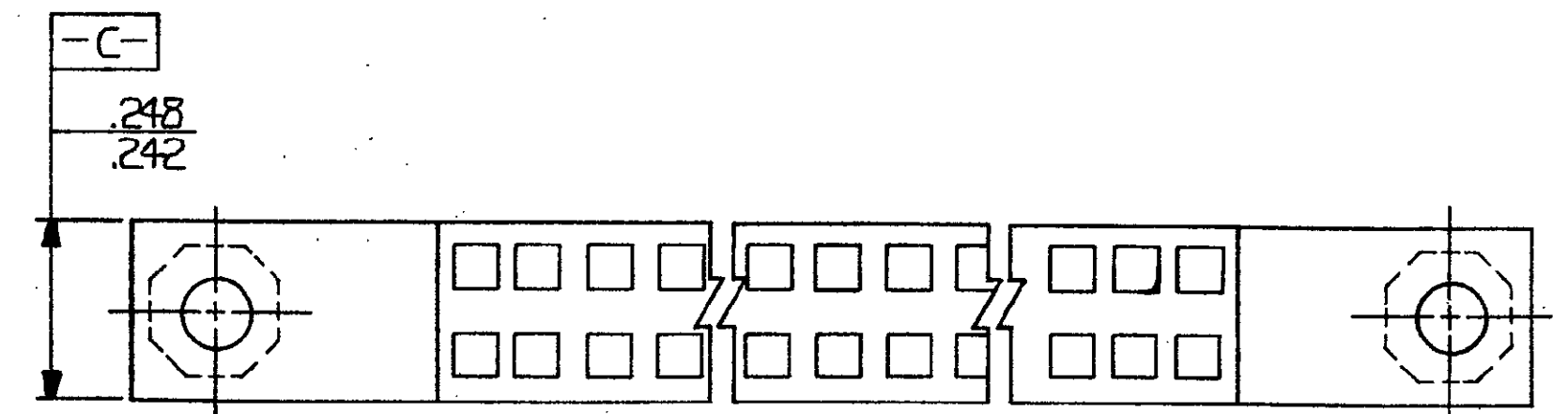
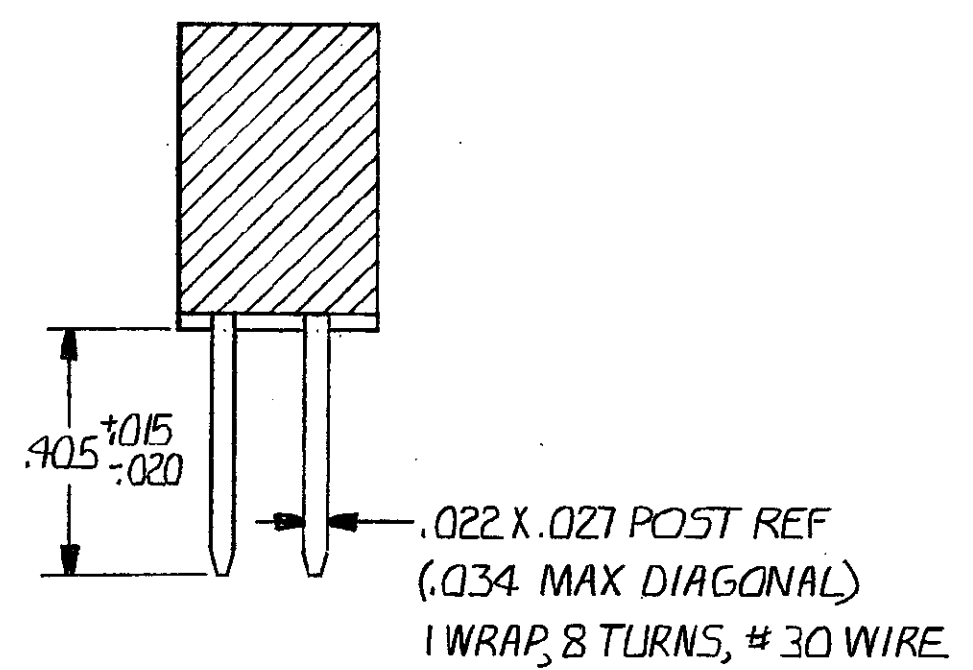
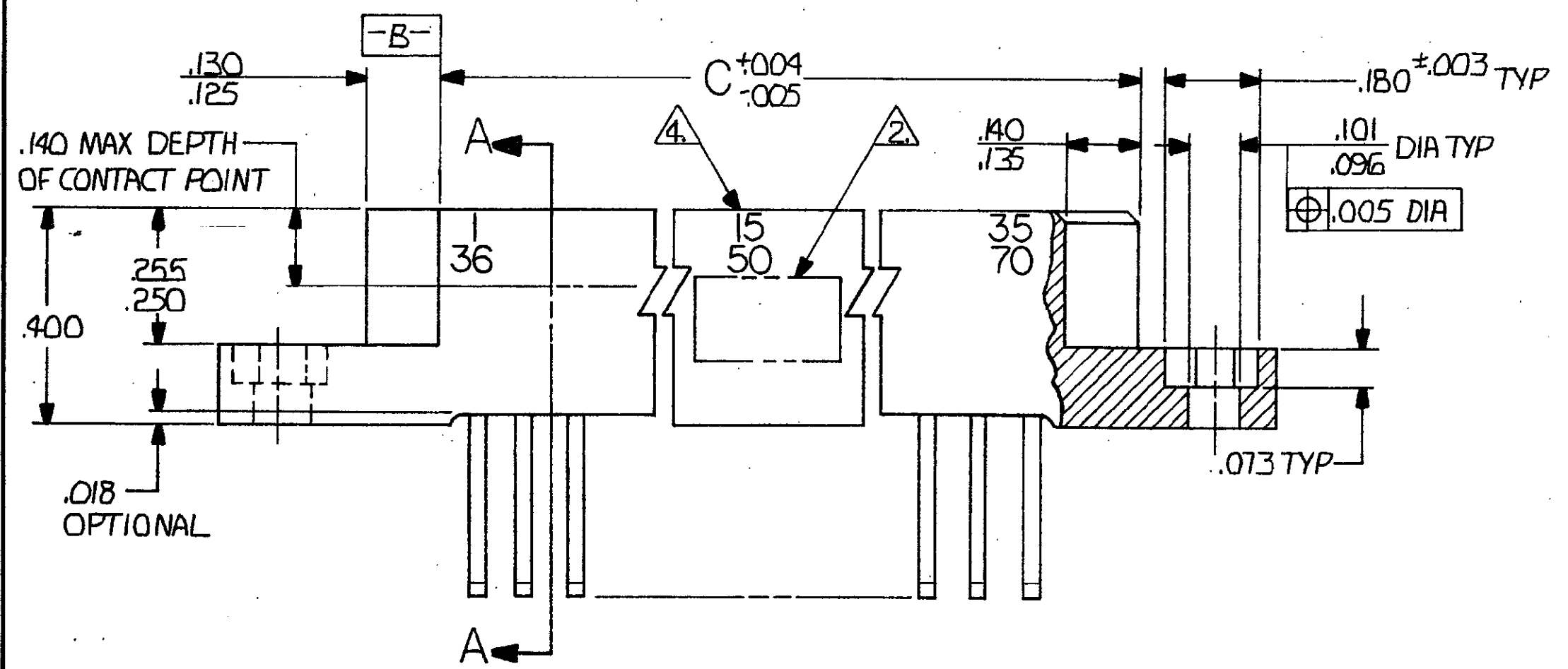
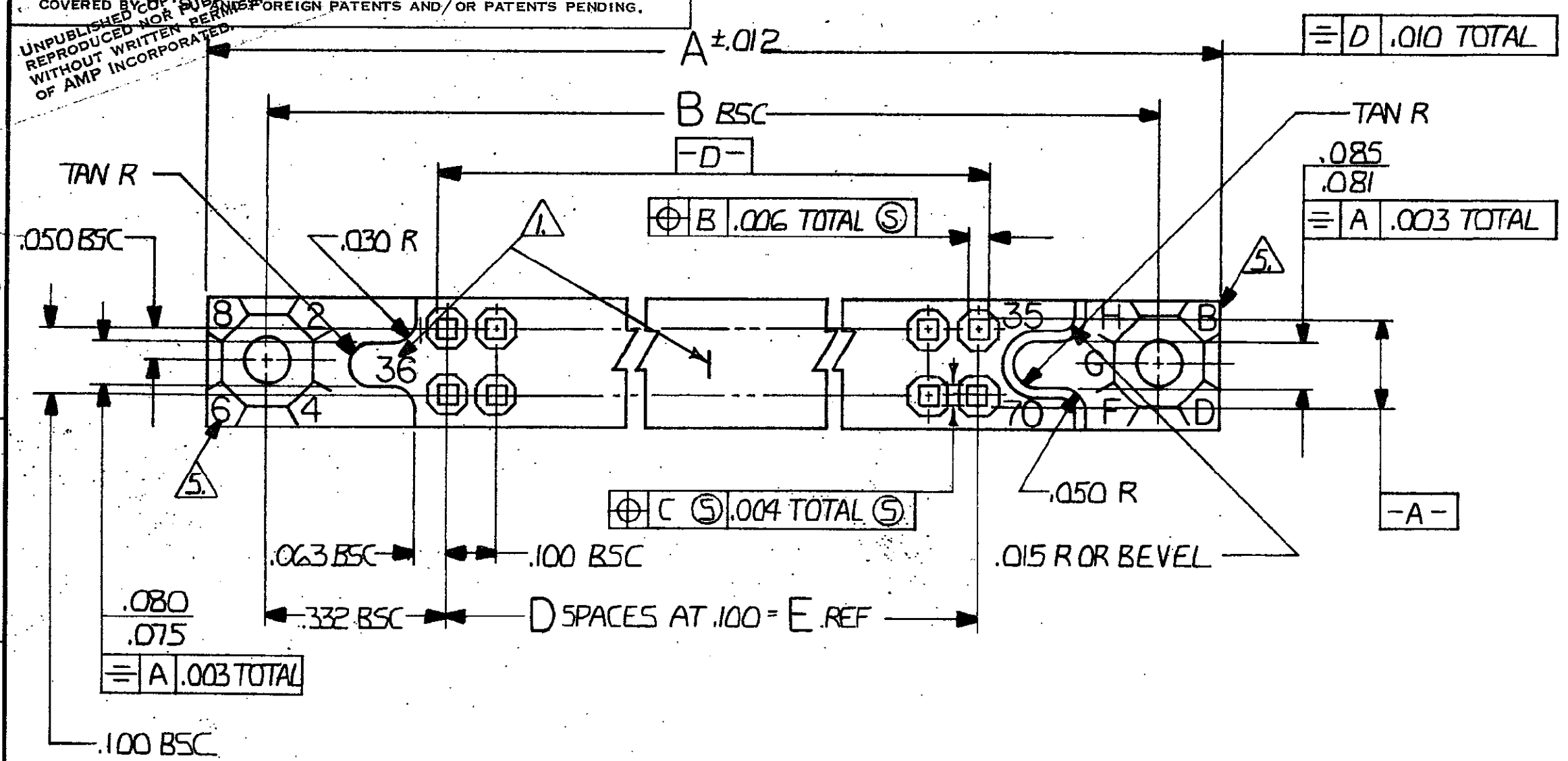


© COPYRIGHT 1979 BY AMP INCORPORATED, HARRISBURG, PA. ALL INTERNATIONAL RIGHTS RESERVED. AMP INCORPORATED PRODUCTS COVERED BY COPY AND PUBLICATION PATENTS AND/OR PATENTS PENDING.  
UNPUBLISHED COPY RIGHTS RESERVED WITHOUT WRITTEN PERMISSION OF AMP INCORPORATED.

REVISIONS							
P	F	ZONE	LTR	DESCRIPTION	DATE	APPROVED	
			F	ECO-08-020831	PY	10-08	BW



UNLESS OTHERWISE SPECIFIED DIMENSIONS ARE IN INCHES. TOLERANCES ON: DECIMALS $\pm .005$ ANGLES $\pm .005$	CONTRACT NO	PART NO	
	DR <i>Robert Wolbert</i> 11-12-76	AMP INCORPORATED Harrisburg, Pa.	
	CHK <i>R. Williams</i> 11-23-76	NAME BOX CONNECTOR RECEPTACLE ASSY .100 GRID EXTERNAL KEYING	REV F
MATERIAL $\Delta \text{ 7. 8}$	APPD <i>R. Williams</i> 11-23-76	SIZE C	CODE IDENT NO 00779
FINISH $\Delta \text{ 8.}$	APPD <i>D.C. Myers</i> 11-29-76	DRAWING NO 530781	SHEET 1 OF 2
	DSGN APPD	SCALE 4-1	
	OTHER APPD		

CUSTOMER DRAWING

530781

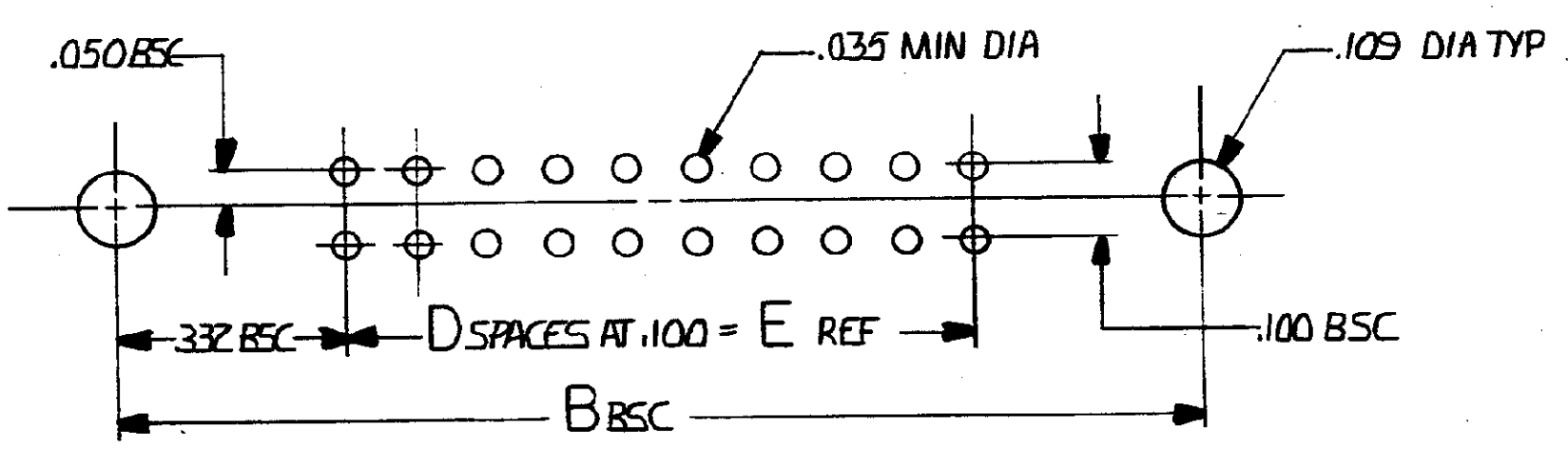
DRAWING MADE IN THIRD ANGLE PROJECTION

© COPYRIGHT 1976 BY AMP INCORPORATED, HARRISBURG, PA. ALL INTERNATIONAL RIGHTS RESERVED. AMP INCORPORATED PRODUCTS COVERED BY U. S. AND FOREIGN PATENTS AND/OR PATENTS PENDING.

UNPUBLISHED COPY REPRODUCED WITHOUT WRITTEN PERMISSION OF AMP INCORPORATED

P		F		ZONE		LTR		REVISIONS		DATE		APPROVED	
								DESCRIPTION					
								SEE SHEET 1 OF 2					

- 1. NUMBERS AND LINES INDICATING EVERY FIVE CAVITIES MARKED ON MATING FACE.
- 2. AMP PART NUMBER DATE CODE, 00779 & MILITARY PART NUMBER MARKED IN THIS AREA SIDE OPTIONAL
- 3. MUST MEET ALL APPLICABLE REQUIREMENTS OF MIL-C-55302.
- 4. NUMBERS INDICATING EVERY FIVE CAVITIES MARKED ON SIDE
- 5. KEY POSITION IDENTIFICATION MOLDED ON SURFACES SHOWN.
- 6. USE EXTERNAL KEY NUMBER 530341-1 MATES WITH PART NUMBER 530339.
- 7. HOUSING MATERIAL: DIALLYL PHTHALATE COLOR: BLUE PER MIL-M-14 TYPE 50G-F.
- 8. CONTACT MATERIAL: BERYLLIUM COPPER .000050 GOLD OVER NICKEL.



RECOMMENDED PRINTED CIRCUIT BOARD LAYOUT

M55302/27-225	71	190 <sup>70</sup>	6.900	69	7.165	7.565	7.855	140	1-530781-3
M55302/27-224	68	134 <sup>67</sup>	6.600	66	6.865	7.265	7.555	134	1-530781-2
M55302/27-223	66	130 <sup>65</sup>	6.400	64	6.665	7.065	7.355	130	1-530781-1
M55302/27-222	61	120 <sup>60</sup>	5.900	59	6.165	6.565	6.855	120	1-530781-0
M 55302/27-171	56	110 <sup>55</sup>	5.400	54	5.665	6.065	6.355	110	530781-9
M 55302/27-170	51	100 <sup>50</sup>	4.900	49	5.165	5.565	5.855	100	-8
M 55302/27-169	46	90 <sup>45</sup>	4.400	44	4.665	5.065	5.355	90	-7
M 55302/27-168	41	80 <sup>40</sup>	3.900	39	4.165	4.565	4.855	80	-6
M 55302/27-167	36	70 <sup>35</sup>	3.400	34	3.665	4.065	4.355	70	-5
M 55302/27-166	31	60 <sup>30</sup>	2.900	29	3.165	3.565	3.855	60	-4
M 55302/27-165	26	50 <sup>25</sup>	2.400	24	2.665	3.065	3.355	50	-3
M 55302/27-164	21	40 <sup>20</sup>	1.900	19	2.165	2.565	2.855	40	-2
M 55302/27-163	16	30 <sup>15</sup>	1.400	14	1.665	2.065	2.355	30	530781-1
M 55302									
PART NUMBER	CONTACT IDENTIFICATION NO		E	D	C	B	A	NO OF CONTACTS	PART NO

UNLESS OTHERWISE SPECIFIED DIMENSIONS ARE IN INCHES. TOLERANCES ON: DECIMALS ±.005 ANGLES ±.005	CONTRACT NO	AMP INCORPORATED Harrisburg, Pa.	
	DR Robert Wolben 11-15-76		
MATERIAL	CHK R. Williams 11-23-76	NAME BOX CONNECTOR RECEPTACLE	
	APPD R. Williams 11-23-76	ASSY .100GRID EXTERNAL KEYING	
FINISH	APPD J.C. Myers 11-29-76	SIZE C	CODE 00779
	DSGN APPD	IDENT NO 530781	DRAWING NO 530781
OTHER APPD		REV F	
		SCALE 4:1	SHEET 2 OF 2

530781

## X-ON Electronics

Largest Supplier of Electrical and Electronic Components

*Click to view similar products for [Rectangular MIL Spec Connectors](#) category:*

*Click to view products by [TE Connectivity](#) manufacturer:*

Other Similar products are found below :

[006-1169-16](#) [CSR31343-0001-00000](#) [CSR31346-0001-A0001](#) [CSR31899-0001-00000](#) [CSR31900-0001-A0001](#) [CTJ-3D-05](#) [CTS-S16/16](#)  
[M55302/57A36X](#) [M55302/58-A70Y](#) [65002-062](#) [65008-D08](#) [CY4602-000](#) [732-8020-01](#) [732-8021-02 B](#) [77058-22-55PN](#) [81542-20](#)  
[86.030.0053.0](#) [1241346-1](#) [RM252-020-311-2900](#) [DMC-M 08-16 SNE](#) [1589051-4](#) [BACC65CAMA](#) [BACC65CAMN](#) [BACC65CP1PN](#)  
[BACI10BC1220PN](#) [18023-9](#) [HSB-D4S03DM222X](#) [2217548-1](#) [891-009-15SA2-BRT1T](#) [SIM2S100A](#) [1604996-2](#) [SMD25PN90L-4055](#)  
[1925036-4](#) [220A012-25225-0](#) [22628-10-6P-791](#) [CSR31343-0001-A0001](#) [CSR31899-0001-A0001](#) [CSR31900-0001-00000](#) [33526M11-08PD](#)  
[RE04-212S](#) [CTD160E01F-6148](#) [CTJ112E03B](#) [CTJ122E02D-8000](#) [CTJ-3D-12](#) [CTJ920E06N-513](#) [CTJ920E12N-513](#) [CTL-16-090](#) [CTR06-](#)  
[5100SY](#) [M55302/63A20H](#) [M55302/66-30H](#)