

IDENTIFICATION MARKING INCLUDES AMP, PART NO., & DATE CODE.

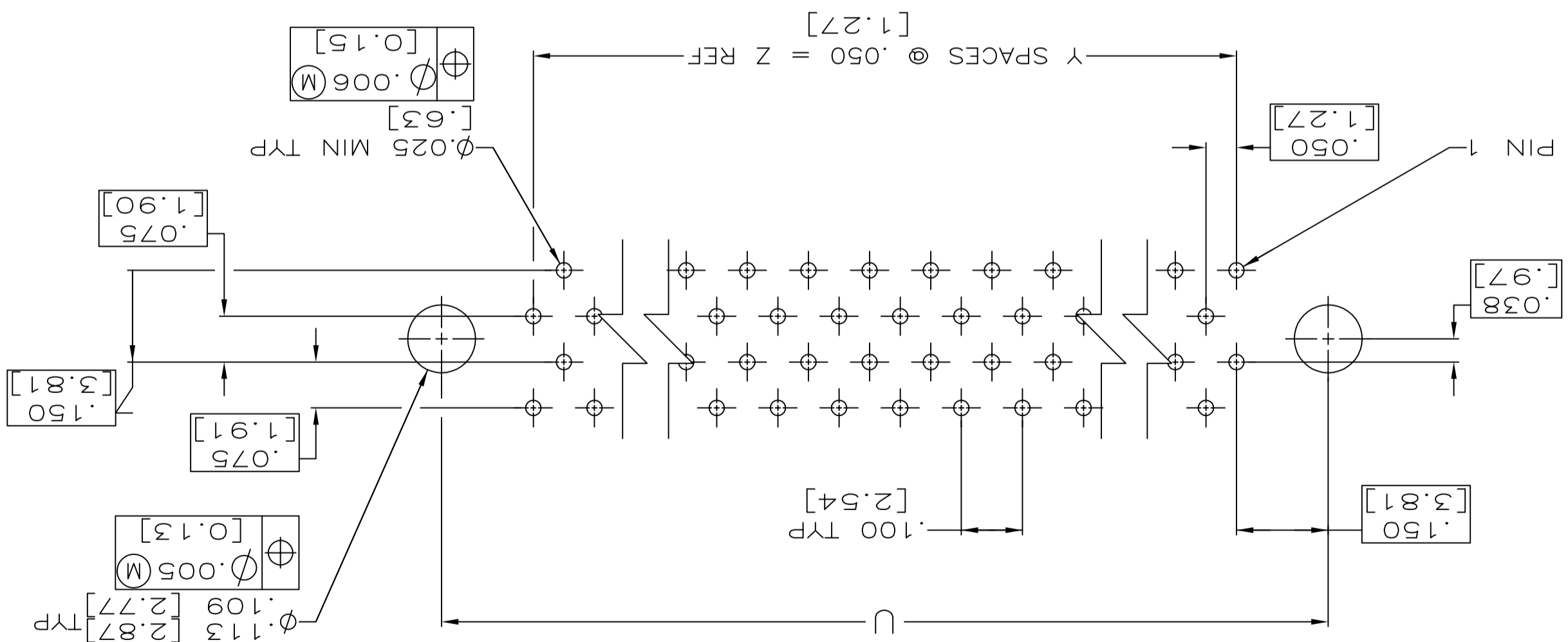
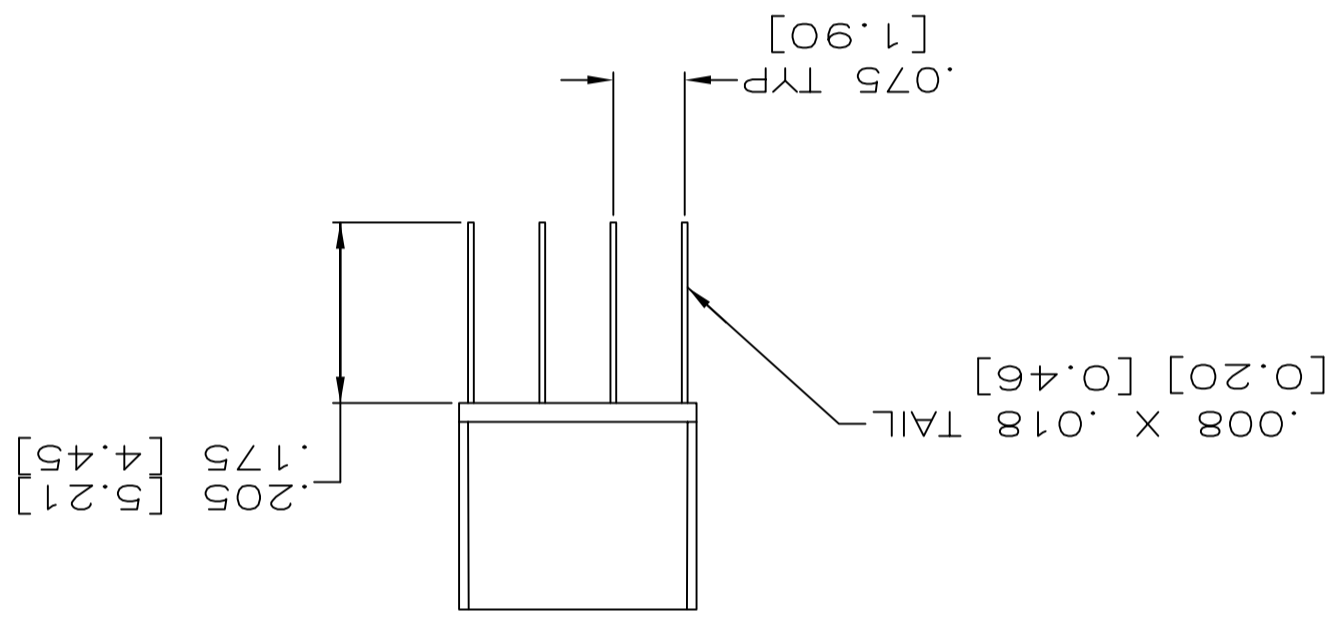
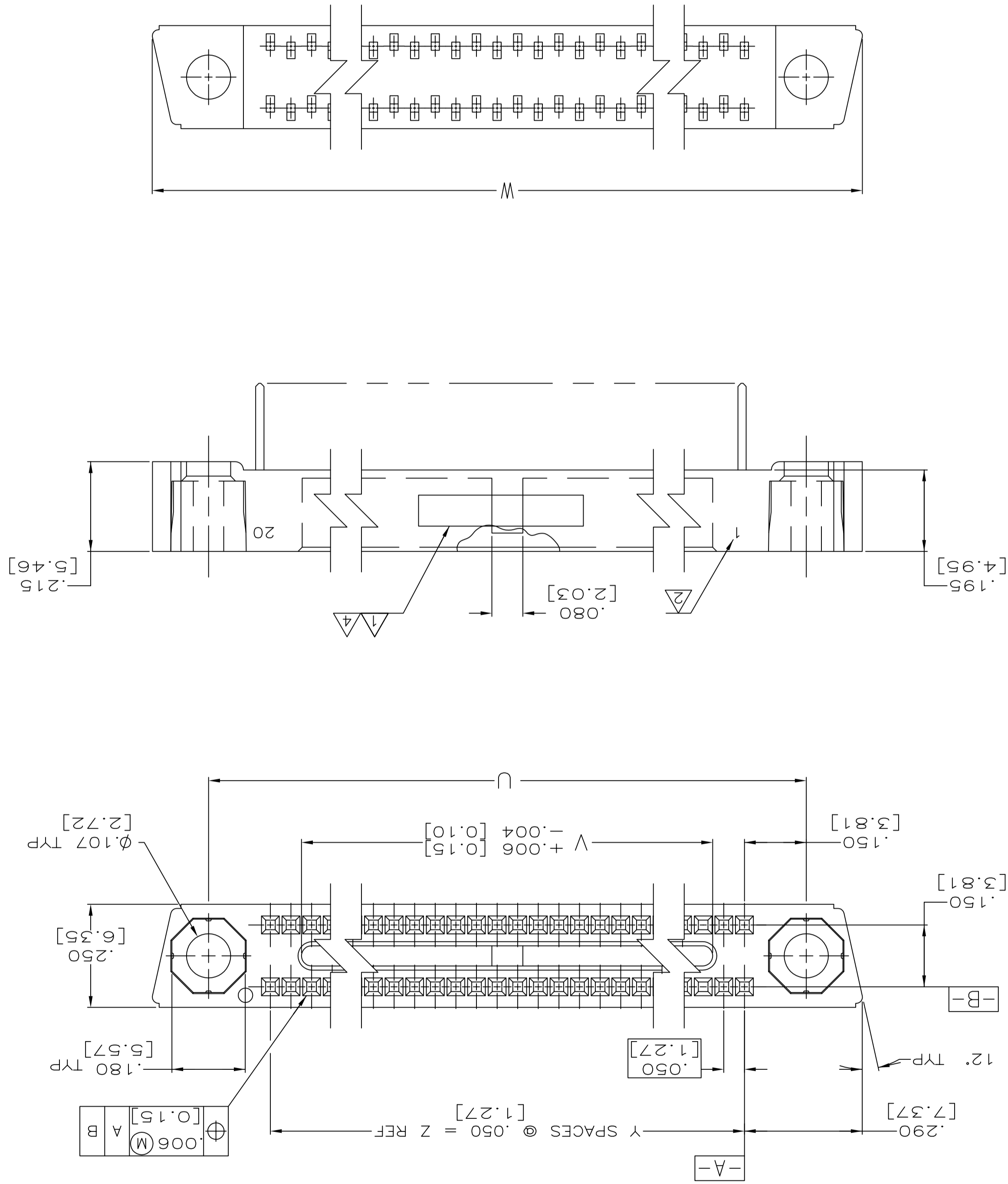
NUMBERS INDICATING END POSITIONS MARKED THIS SIDE ONLY.

3. MEETS ALL APPLICABLE REQUIREMENTS OF MIL-C-55302.

SPECIAL MARKING FOR -1 ONLY: AMP, DATE CODE, AND CUSTOMER PART NUMBER.

CONTACT FINISH: .00050 GOLD IN CONTACT AREA, TIN-LEAD ON TAILS, ALL OVER .00030 NICKEL.

HOUSING MATERIAL: LIQUID CRYSTAL POLYMER PER MIL-M-24519, GLCP-30F; COLOR: GRAY.



OBSOLETE		1 - 40	1.950 [49.53]	39	2.540 [64.52]	1.800 [45.72]	2.250 [57.15]	80	531101-2
CUSTOMER PART NUMBER		1 - 64	3.150 [80.01]	63	3.740 [95.00]	3.000 [76.20]	3.450 [87.63]	128	531101-1
CONTACT IDENT NUMBERS									
CUSTOMER PART NUMBER									
PC 78619-2									

CUSTOMER DRAWING		SCALE 1:1		SHEET 1 OF 1		REV H	
WEIGHT		FINISH		MATERIAL		DIMENSIONS	
APPROXIMATE WEIGHT		TOLERANCES UNLESS OTHERWISE SPECIFIED		INCHES		MILS	
APPLICATION SPEC		D. GUTTER		D. GUTTER		D. GUTTER	
PRODUCT SPEC		1-3-92		1-3-92		1-3-92	
CONNECTOR ASSEMBLY, MINI-BOX		RECEPTACLE CONTACT		TE Connectivity		STE	

REV	DATE	BY	DESCRIPTION
1	27APR2017	PJM	PHM CT
2			REVISED PER ECO-16-017894
3			
4			
5			
6			
7			
8			

## X-ON Electronics

Largest Supplier of Electrical and Electronic Components

*Click to view similar products for [Headers & Wire Housings](#) category:*

*Click to view products by [TE Connectivity](#) manufacturer:*

Other Similar products are found below :

[95000-104TRLF](#) [10135584-644402LF](#) [DF62W-EP2022PCA](#) [95000-106TRLF](#) [DF62W-2022SCA](#) [DF62W-EP2022PC](#) [2203348](#) [DF62W-2022SC](#) [1084018](#) [1029039](#) [1084017](#) [802-10-012-10-002000](#) [1112640](#) [1112639](#) [000-34000](#) [0009482033](#) [0009507031](#) [57102-S06-03LF](#) [57202-S52-04LF](#) [PCN6-15S-2.5E](#) [0039019024](#) [58102-G61-06LF](#) [582553-1](#) [0009485154](#) [0009508121](#) [0022285053](#) [0050291907](#) [018731A](#) [LY20-4P-DT1-P1E-BR](#) [02.125.8002.8](#) [60101931](#) [60598-1 \(Cut Strip\)](#) [M1625-3R/100](#) [61062-3](#) [61082-181009](#) [636-1427](#) [638009-1](#) [641938-9](#) [641991-4](#) [644168-1](#) [647662-1](#) [65039-019ELF](#) [65817-002LF](#) [65817-015LF](#) [65863-015LF](#) [66207-023LF](#) [67016-026LF](#) [67046-001LF](#) [67095-007LF](#) [67230-005LF](#)