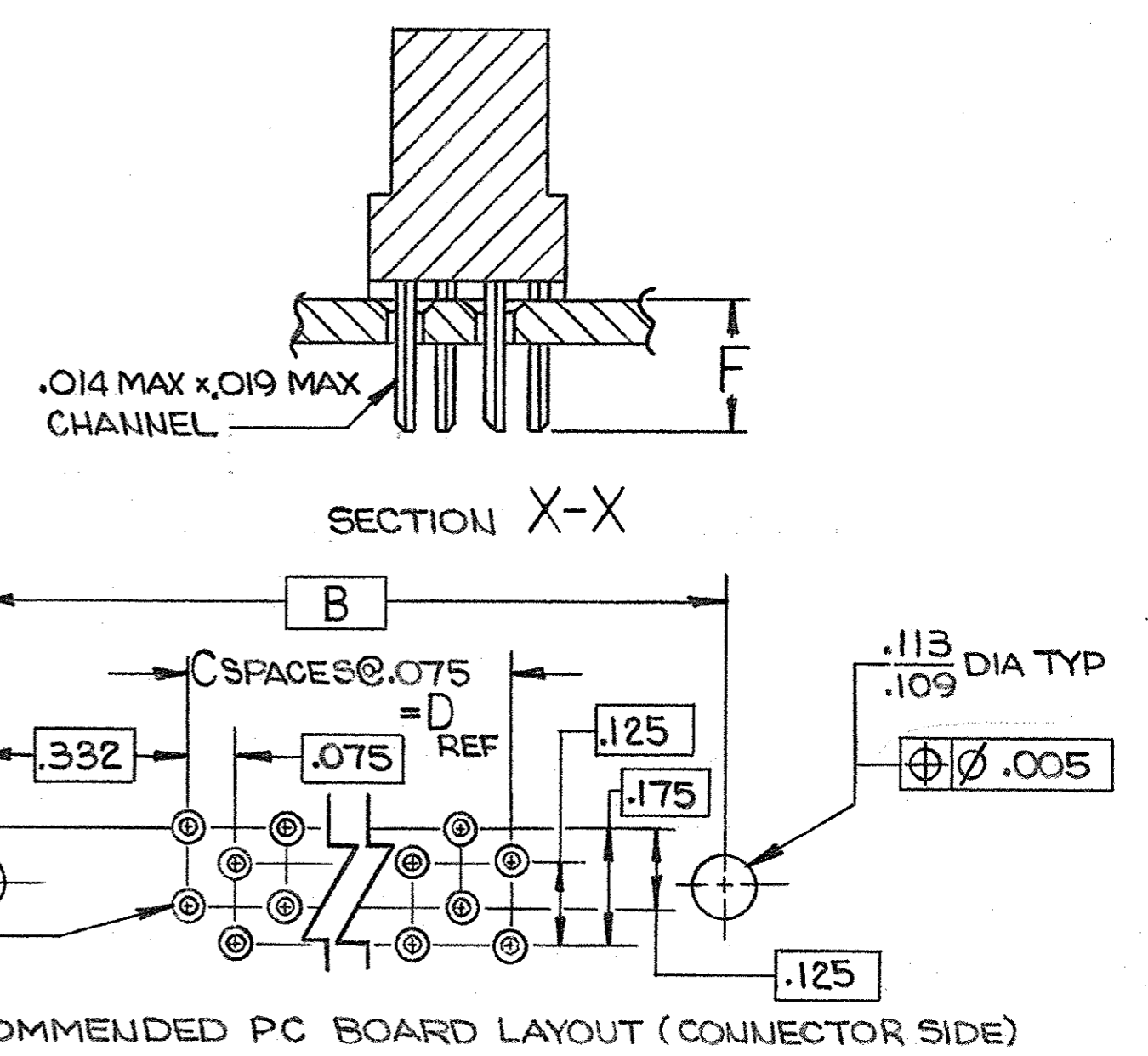
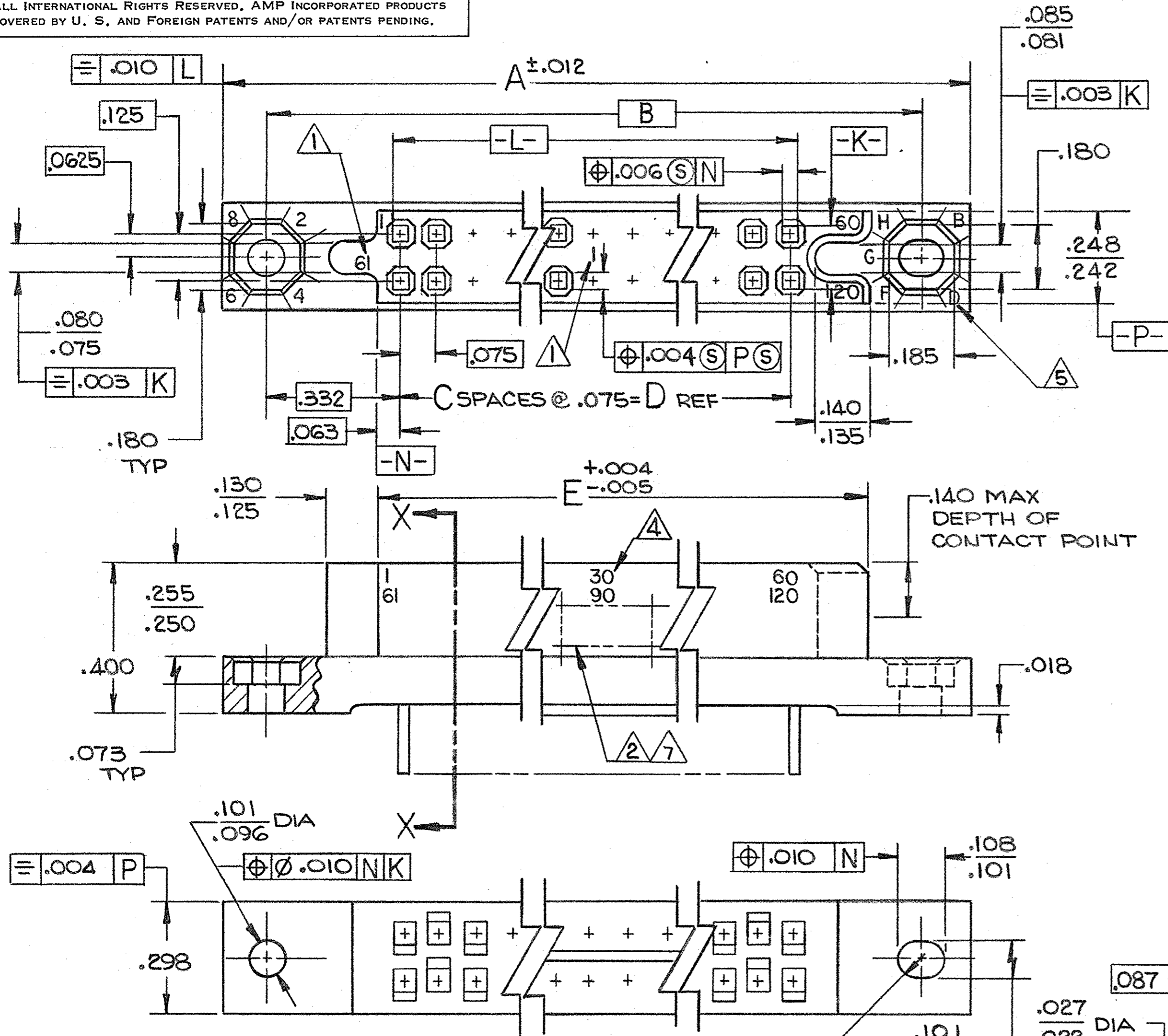


© COPYRIGHT 19 BY AMP INCORPORATED, HARRISBURG, PA.
ALL INTERNATIONAL RIGHTS RESERVED. AMP INCORPORATED PRODUCTS
COVERED BY U. S. AND FOREIGN PATENTS AND/OR PATENTS PENDING.

REVISIONS				DATE	APPROVED
P	F	ZONE	LTR		
				DESCRIPTION	
				D	ECO-08-020831
				PY	10-08
					BW



- 1. NUMBERS (SEE TABLE) AND LINES INDICATING EVERY FIVE (5) CAVITIES MARKED ON MATING FACE
 - 2. IDENTIFICATION MARKINGS PER MIL-C-55302 (SEE TABLE) IN ADDITION TO "AMP", PART NO. AND DATE CODE.
 - 3. MUST MEET ALL APPLICABLE REQUIREMENTS OF MIL-C-55302.
 - 4. NUMBERS INDICATING EVERY FIVE (5) CAVITIES MARKED ON SIDE.
 - 5. KEY POSITION INDICATORS MOLDED ON HOUSING.
 - 6. USES KEY KIT PART NUMBER 530341-3.
 - 7. MARKING FOR DASH 5 PART NUMBER IS: AMP 531145-5, DATE CODE, 414-2998-001, 94756, 00779.
 - 8. HOUSING: DIALLYL PHTHALATE PER MIL-M-14 TYPE SDG-F COLOR: BLUE
 - 9. CONTACTS: BERYLLIUM COPPER (BeCu) OR COPPER NICKEL SILICONE (CuNiSi) FINISH: .000050 GOLD IN CONTACT AREA, TIN-LEAD ON SOLDER TAILS, ALL OVER NICKEL UNDERPLATE.
- [NOTES CONTINUED -- SEE SHEET 2]

UNLESS OTHERWISE SPECIFIED DIMENSIONS ARE IN INCHES. TOLERANCES ON: DECIMALS ±.005 ANGLES ±		CONTRACT NO 10-9-79	PART NO	
MATERIAL 8	DR IRSHAFFNER	CHK Roy W. Duerbin 11/7/79	AMP INCORPORATED Harrisburg, Pa.	
FINISH 9	APPD Roy W. Duerbin 11/7/79	APPD S. T. ... 11/8/79	NAME RECEPTACLE ASSEMBLY, 750 SERIES BOX, WITH EXTERNAL KEYING, FLOW SOLDER CONTACTS	
	DSGN APPD	OTHER APPD	SIZE C	CODE IDENT NO 00779
			DRAWING NO 531145	REV D
			SCALE 4:1	SHEET 1 OF 2

531145

© COPYRIGHT 19 BY AMP INCORPORATED, HARRISBURG, PA.
ALL INTERNATIONAL RIGHTS RESERVED. AMP INCORPORATED PRODUCTS
COVERED BY U. S. AND FOREIGN PATENTS AND/OR PATENTS PENDING.

REVISIONS					
P	F	ZONE	LTR	DESCRIPTION	DATE APPROVED
~ SEE SHEET 1					

10 ATTACHED FLOW CHART PERTAINS TO DASH FIVE ONLY
AND CORRESPONDS TO THE BASELINE DOCUMENT FOR
532476, ROCKWELL ONLY.

531145

#	1 - 90	91 - 180	171/.136	6.940	6.675	89	7.340	7.630	180	531145-5
M55302/25-29	1 - 90	91 - 180	.171/.136	6.940	6.675	89	7.340	7.630	180	531145-4
M55302/25-25	1 - 80	81 - 160	↑	6.190	5.925	79	6.590	6.880	160	↑ -3
M55302/25-21	1 - 75	76 - 150	↓	5.815	5.550	74	6.215	6.505	150	↓ -2
M55302/25-17	1 - 60	61 - 120	.171/.136	4.690	4.425	59	5.090	5.380	120	531145-1
REMARKS	IDENTIFICATION MARKING	CONTACT IDENT NO.	F	E	D	C	B	A	NO. OF CONTACTS	PART NO

UNLESS OTHERWISE SPECIFIED DIMENSIONS ARE IN INCHES. TOLERANCES ON: DECIMALS ± _____ ANGLES ± _____	CONTRACT NO		AMP AMP INCORPORATED Harrisburg, Pa.	
	DR IRSHAFNER 10-9-79			
	MATERIAL		NAME RECEPTACLE ASSEMBLY, 750 SERIES BOX, WITH EXTERNAL KEYING, FLOW SOLDER CONTACTS	
	FINISH		SIZE CODE IDENT NO DRAWING NO C 00779 531145	
		OTHER APPD		REV D
		SCALE _____		SHEET 2

X-ON Electronics

Largest Supplier of Electrical and Electronic Components

Click to view similar products for [Headers & Wire Housings](#) category:

Click to view products by [TE Connectivity](#) manufacturer:

Other Similar products are found below :

[95000-104TRLF](#) [10135584-644402LF](#) [DF62W-EP2022PCA](#) [95000-106TRLF](#) [DF62W-2022SCA](#) [DF62W-EP2022PC](#) [2203348](#) [DF62W-2022SC](#) [1084018](#) [1029039](#) [1084017](#) [802-10-012-10-002000](#) [1112640](#) [1112639](#) [000-34000](#) [0009482033](#) [0009507031](#) [57102-S06-03LF](#) [57202-S52-04LF](#) [PCN6-15S-2.5E](#) [0039019024](#) [58102-G61-06LF](#) [582553-1](#) [0009485154](#) [0009508121](#) [0022285053](#) [0050291907](#) [018731A](#) [LY20-4P-DT1-P1E-BR](#) [02.125.8002.8](#) [60101931](#) [60598-1 \(Cut Strip\)](#) [M1625-3R/100](#) [61062-3](#) [61082-181009](#) [636-1427](#) [638009-1](#) [641938-9](#) [641991-4](#) [644168-1](#) [647662-1](#) [65039-019ELF](#) [65817-002LF](#) [65817-015LF](#) [65863-015LF](#) [66207-023LF](#) [67016-026LF](#) [67046-001LF](#) [67095-007LF](#) [67230-005LF](#)