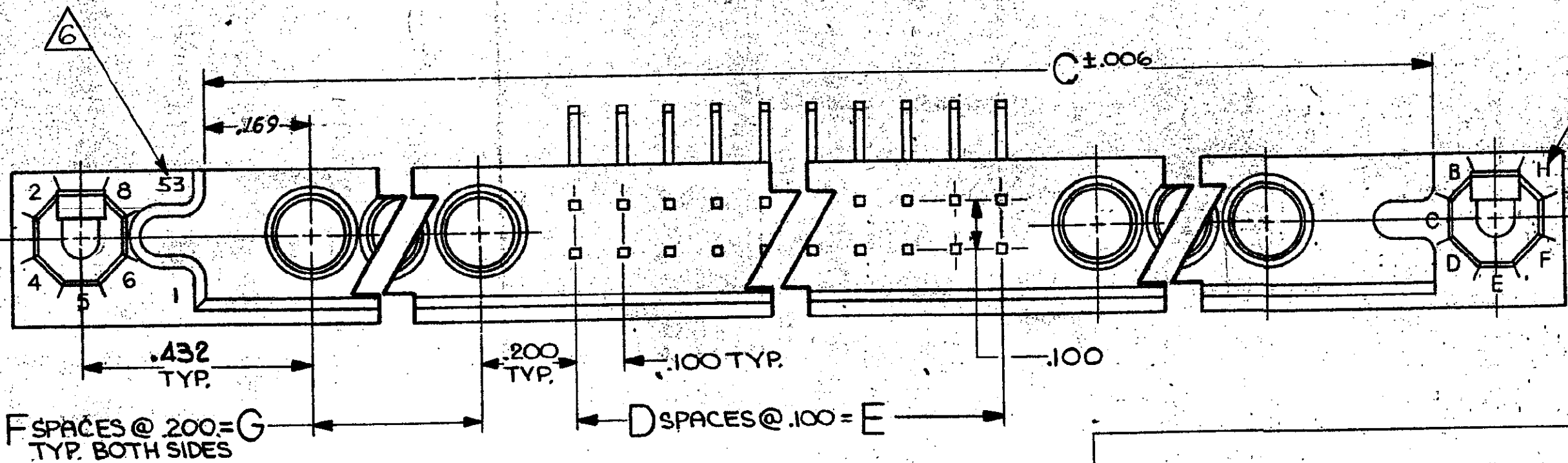
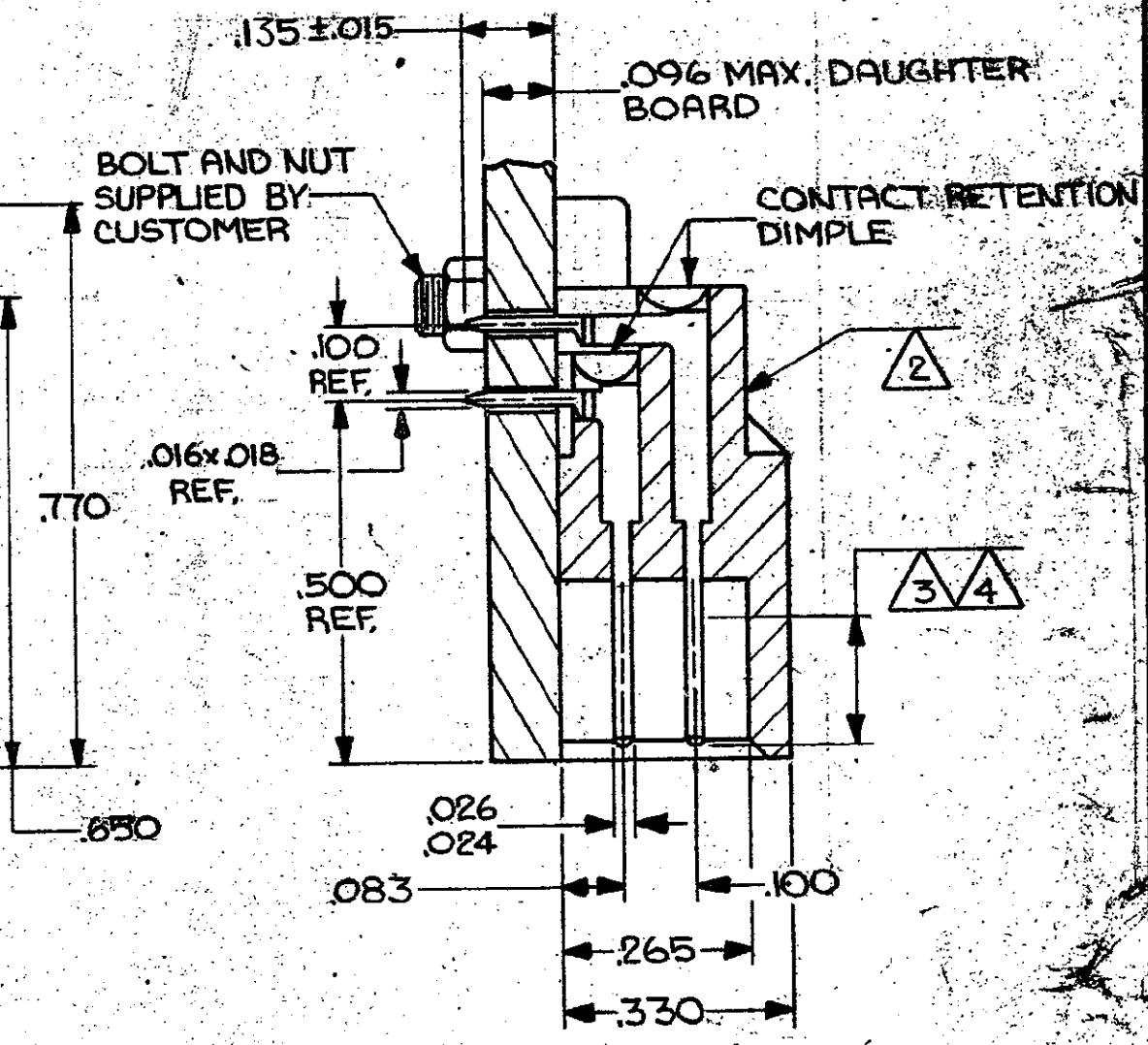
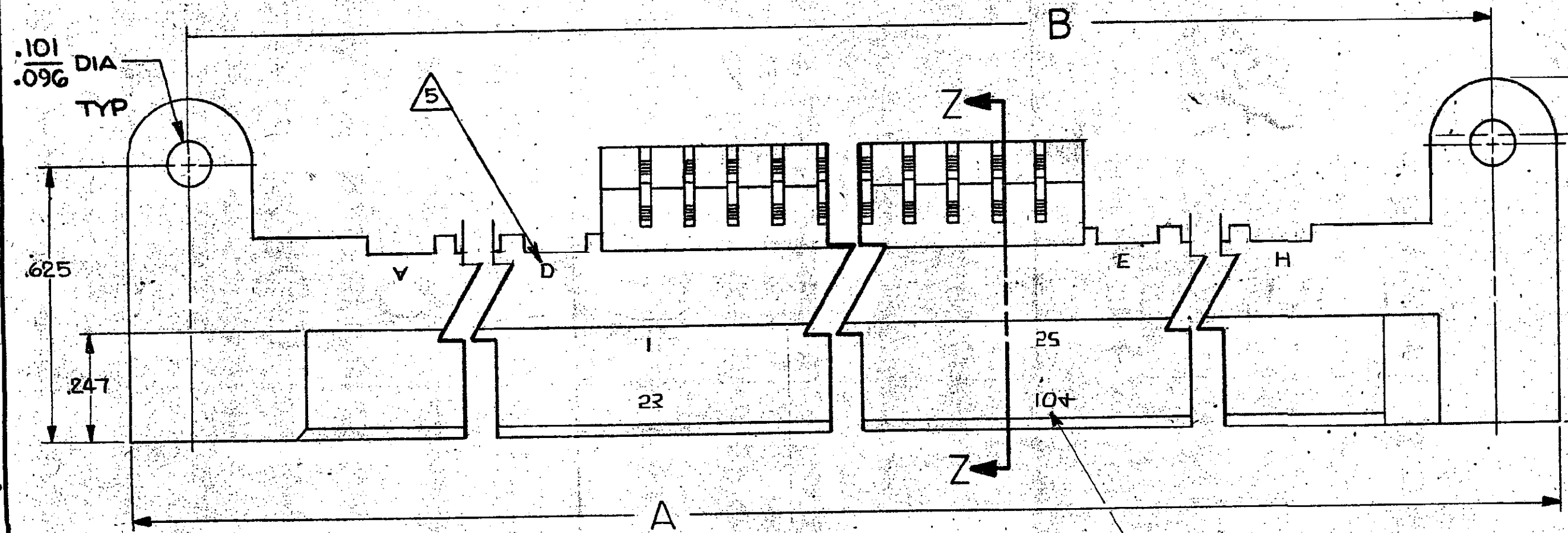
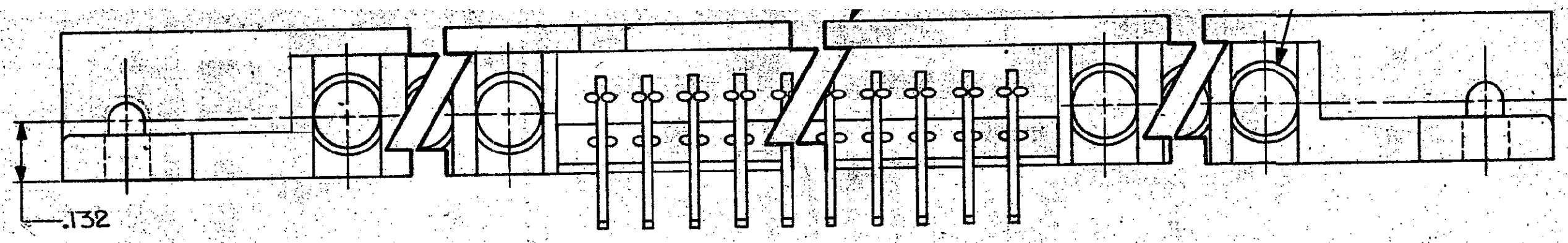


© COPYRIGHT 19 BY AMP INCORPORATED, HARRISBURG, PA.  
 ALL INTERNATIONAL RIGHTS RESERVED. AMP INCORPORATED PRODUCTS  
 COVERED BY U. S. AND FOREIGN PATENTS AND/OR PATENTS PENDING.

THIS DRAWING IS UNPUBLISHED  
 RELEASED FOR PUBLICATION 19

		REVISIONS		
REV	ZONE/LTR	DESCRIPTION	DATE	APPROVED
0		RELEASED WAS 5085-10693	5-89	
A		REV PER DF-2126 T.W.	8-89	DM
B		REV PER DF-4316 AJG	8-91	DM
C		REV 0600-5641-96 TT	9-97	DM
D		ECO-10-002916 PY	2-10	DM

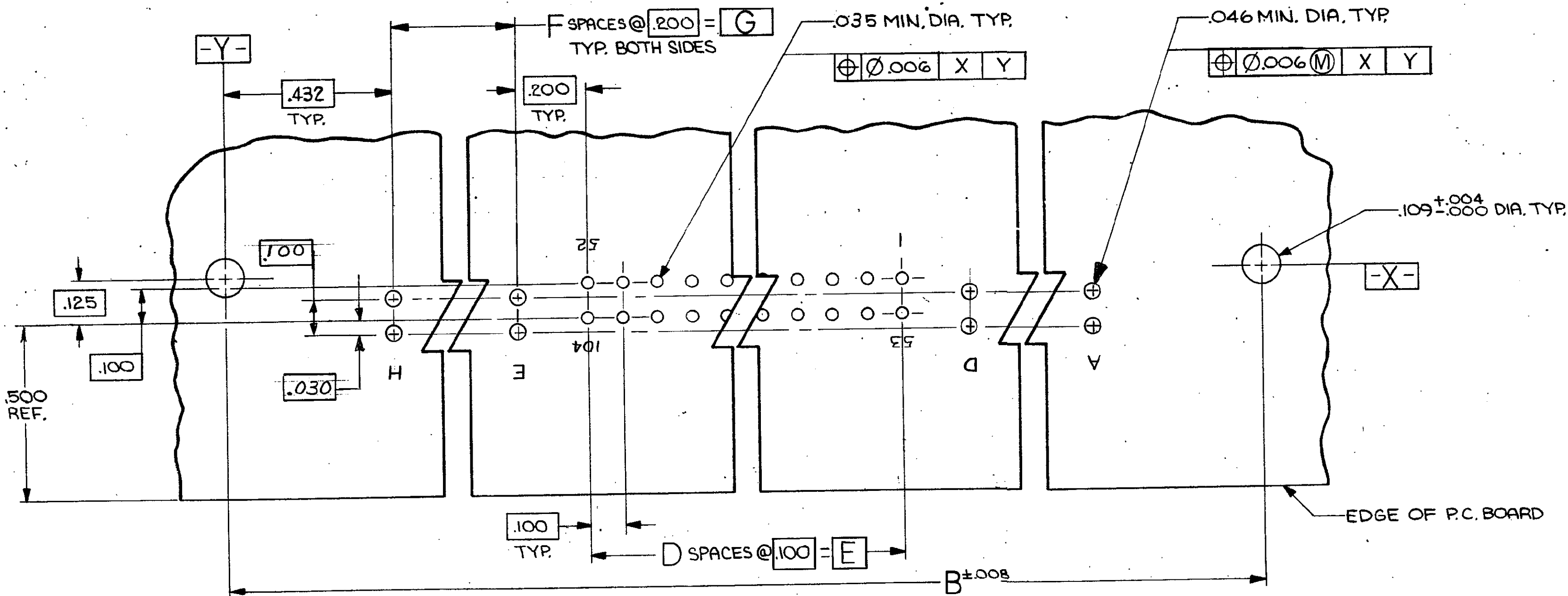


MOLDED KEY POS. INDICATORS

UNLESS OTHERWISE SPECIFIED DIMENSIONS ARE IN INCHES. TOLERANCES ON: DECIMALS ±.010 ANGLES MATERIAL FINISH	CONTRACT NO	AMP INCORPORATED Harrisburg, Pa.		
	DR	NAME		
	CHK	BOX 1001 SERIES, PIN HEADER ASSEMBLY, WITH COAX		
	APPD	SIZE	CODE IDENT NO	DRAWING NO
	DSGN APPD	C	00779	533171
	OTHER APPD	SCALE	4:1	SHEET 1 OF 2

CUSTOMER DRAWING

533171



RECOMMENDED P.C. BOARD LAYOUT

- 1 "AMP", PART NO., AND DATE CODE MARKED THIS AREA
- 2 HOUSING MATERIAL: GLASS-FILLED POLYESTER, COLOR-BLUE.
- 3 CONTACT FINISH: .000050 NICKEL UNDERPLATE ALL OVER, .000050 GOLD IN THIS AREA, .000100 TIN LEAD ON SOLDER TAIL.
- 4 CONTACT MATERIAL: BRASS.
- 5 COAX POS. (A,B,C,D,E,F,G, H) MARKED ON OPPOSITE SIDE ONLY.
- 6 ONLY CONT. POS. MARKED ON OPPOSITE SIDE ONLY. NUMBERS INDICATING EVERY FIFTH CAVITY MARKED ON SIDE. NUMBERS INDICATING END CAVITIES MARKED ON MATING FACE.
- 7 WILL ACCEPT MICROMINATURE COAX CONTACT, AMP P/N 227602-1 & 227604-1 INSERT COAX CONTACT P/N 227602-1 FROM THIS SIDE BEFORE MOUNTING TO P.C. BOARD.

	.600	3	0.600	6	2.675	3.065	3.355	8	14	1-533171-0
OBS	↑	↑	1.100	11	3.175	3.565	3.855	↑	24	↑ -9
			1.600	16	3.675	4.065	4.355		34	-8
OBS			2.100	21	4.175	4.565	4.855		44	-7
OBS			2.600	26	4.675	5.065	5.355		54	-6
			3.100	31	5.175	5.565	5.855		64	-5
OBS			3.600	36	5.675	6.065	6.355		74	-4
OBS			4.100	41	6.175	6.565	6.855		84	-3
	↓	↓	4.600	46	6.675	7.065	7.355	↓	94	↓ -2
OBS	.600	3	5.100	51	7.175	7.565	7.855	8	104	533171-1
	G	F	E	D	C	B	A	COAX POS	POS	PART NO.

UNLESS OTHERWISE SPECIFIED DIMENSIONS ARE IN INCHES. TOLERANCES ON: DECIMALS ± ANGLES ±	CONTRACT NO		<b>AMP</b>   AMP INCORPORATED Harrisburg, Pa.	
	DR	4-9-84		
	MATERIAL	CHK C.P.M. Reagan 6/4/84	NAME BOX 1001, SERIES, PIN HEADER ASSEMBLY, WITH COAX	
	FINISH	APPD C.P.M. Reagan 6/4/84 APPD J. H. [Signature] 6/9/84	DSGN APPD	OTHER APPD
SIZE CODE IDENT NO		DRAWING NO		REV
C 00779		533171		D
SCALE 4:1		SHEET 2 OF 2		

CUSTOMER DRAWING

533171

## X-ON Electronics

Largest Supplier of Electrical and Electronic Components

*Click to view similar products for [Headers & Wire Housings](#) category:*

*Click to view products by [TE Connectivity](#) manufacturer:*

Other Similar products are found below :

[95000-104TRLF](#) [10135584-644402LF](#) [DF62W-EP2022PCA](#) [95000-106TRLF](#) [DF62W-2022SCA](#) [DF62W-EP2022PC](#) [2203348](#) [DF62W-2022SC](#) [1084018](#) [1029039](#) [1084017](#) [802-10-012-10-002000](#) [1112640](#) [1112639](#) [000-34000](#) [0009482033](#) [0009507031](#) [57102-S06-03LF](#) [57202-S52-04LF](#) [PCN6-15S-2.5E](#) [0039019024](#) [58102-G61-06LF](#) [582553-1](#) [0009485154](#) [0009508121](#) [0022285053](#) [0050291907](#) [018731A](#) [LY20-4P-DT1-P1E-BR](#) [02.125.8002.8](#) [60101931](#) [60598-1 \(Cut Strip\)](#) [M1625-3R/100](#) [61062-3](#) [61082-181009](#) [636-1427](#) [638009-1](#) [641938-9](#) [641991-4](#) [644168-1](#) [647662-1](#) [65039-019ELF](#) [65817-002LF](#) [65817-015LF](#) [65863-015LF](#) [66207-023LF](#) [67016-026LF](#) [67046-001LF](#) [67095-007LF](#) [67230-005LF](#)